

200mW Power Adjustable 5.8G VTX 48CH

Main Features

Model : EWVF-7067U

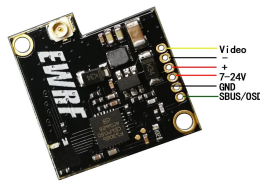
- ✓ Adjustable 4 modes: 25mW/100mW/200mW/OFF
- ✓ Betaflight/Cleanflight OSD configuring parameter channels and Pttmode
- ✓ Clean powerup and channel switching without interference to others
- ✓ Support S.BUS configuring parameter
- ✓ Miniature and light weight design



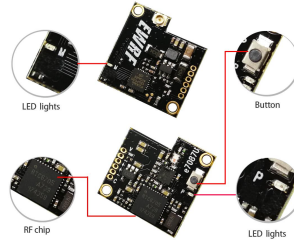
Specifications

Frequency	5.8G 48CH
Weight	2.2g (Including antenna weight 0.8g)
Dimension	Design for RunCam
Power supply	DC 7-24V
Antenna	Exclusive Dipole Whip
Supply current (12V)	110mA (25mW) / 160mA (100mW) / 210mA (200mW)
Transmitting Power	25mW / 100mW / 200mW / OFF (PttMode)

Motherboard sketch map

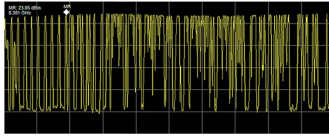


Product details



Channel power

48 channel power consistency is good



5362—5945M Hz The transmitting power of the 48 channels is almost the same, reaching the standard completely

Frequency (MHz)

FR	CH1	CH2	CH3	CH4	CH5	CH6	CH7	CH8
A	5865M	5845M	5825M	5805M	5785M	5765M	5745M	5725M
b	5738M	5718M	5711M	5700M	5690M	5628M	5617M	5606M
c	5709M	5689M	5669M	5649M	5629M	5609M	5589M	5569M
d	5748M	5728M	5708M	5688M	5668M	5648M	5628M	5608M
E	5658M	5638M	5738M	5718M	5698M	5678M	5658M	5638M
F	5362M	5392M	5432M	5472M	5512M	5547M	5584M	5621M

User Guide

1. LED Indication :

- The red LED indicates the state of working mode or the item when setting the VTX (flashing 1 time means selecting the channels, flashing 2 times means selecting the bands, flashing 3 times means selecting the power levels).
- The blue LED indicates the state of Pttmode or the value of item when setting the VTX (e.g. when selecting the channels, 3 times of flashing means channel 3. When selecting the bands, 3 times of flashing means band CAs for the item of power level, 3 times of flashing means at the power level of 500mW).

2. Working mode indication:

- After powering up, the red & blue LED will signal the following three items of VTX in turn: channel, band and power level (the flashing times of the red and blue LEDs indicate the item and the value respectively). After that, the LEDs indicate the working modes.
- Normal: The red & blue LED are on.
- Pttmode: The red LED is on and blue LED is off.

3. Setting:

- Press and hold the button until the red LED flash 1 time which means the item of channel selecting, then press the button can select the channels (blue LED flashing times corresponds to the channel (1-8)).
- Press and hold the button again the red LED will flash 2 times which means the item of band selecting, then press the button can select the bands (blue LED flashing times corresponds to the band (A-F)).
- Press and hold the button again the red LED will flash 3 times which means the item of power level selecting, then press the button can select the power level (blue LED flashing times corresponds to the power level).
- Finally, press and hold the button, save and exit the setting of VTX (this step is essential for setting).
- Press the button twice will toggle the ON/OFF of Pttmode.

4. S.BUS/OSD Setting:

When S.BUS port is connected with a RC receiver, it can be used to change transmitter parameters. Make sure that there is a S.BUS signal from receiver within 3 seconds after powering up, otherwise, the transmitter is back to button press setting mode.

For Betaflight/Cleanflight OSD setting of channel, band, power and Pttmode, please referring to 'Betaflight OSD setting of EWVF Transmitter' for details.

- ⚠ Note: 1. Make sure that there is enough space for airflow when installing the module on the drone in case the overheating protection starts to reduce the power even to shut down at the worst.
- 2. Please install the antenna before powering up for a longer use life.