

DediBot



MOIRA DF3 Manual

Thank you for choosing our product, we highly appreciate your recognition.

Before starting the printer, please read this manual

HANGZHOU DEDIBOT INTELLIGENT TECHNOLOGY CO.,LTD

☎ 0571-81958595

🌐 www.dedibot.com

🌐 www.3dmoira.com

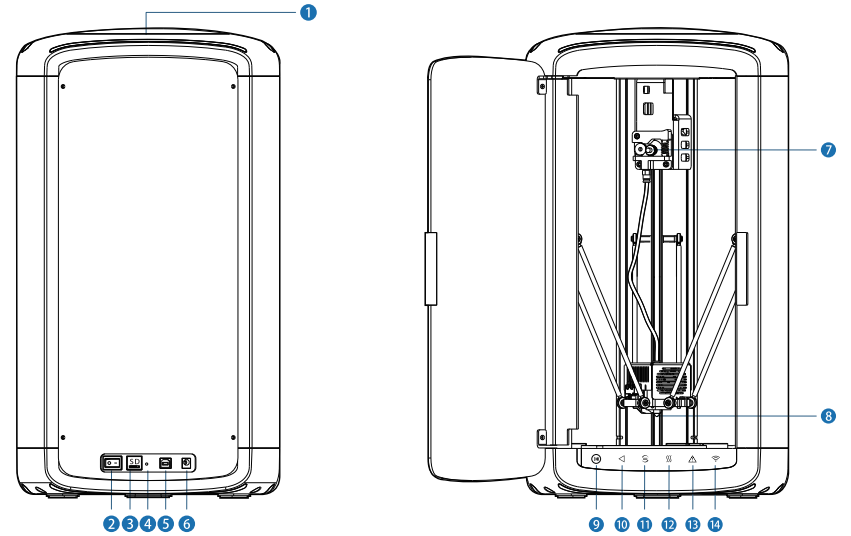
📍 16F,Unit A,Winfun Center,No.228 Binkang

Road,Binjiang District,Hangzhou



微信公众号

Printer Components

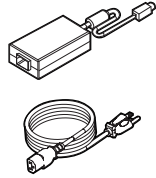


- | | | |
|----------------------|----------------------------------|--|
| 1 Filament Socket | 6 Power Connector | 11 Load /Unload Filament Indicator Light |
| 2 Power Switch | 7 Extruder | 12 Nozzle Heating Indicator Light |
| 3 SD Card Plug | 8 Nozzle | 13 Error Indicator Light |
| 4 Wi-Fi Reset Hole | 9 One Click Printing Button | 14 Wi-Fi Connecting Indicator Light |
| 5 USB Wire Connector | 10 Print/Standby Indicator Light | |

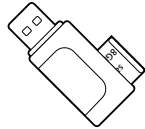
Accessory List



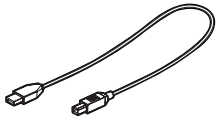
1.Filament X1



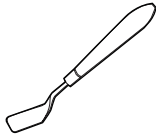
2.Power Cable and Adapter X1



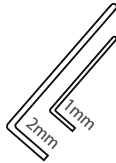
3.SD Card Reader



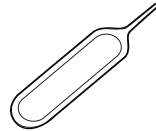
4.USB Wire X1



5.Scoop X1

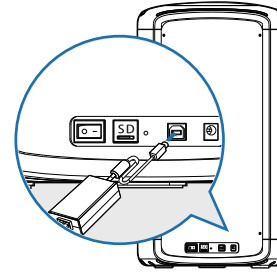


6.Hexagon Wrench X1



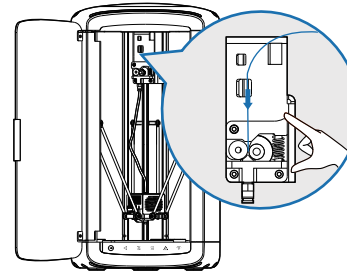
7.Wi-Fi Resetting Pin X1

Printer Installation



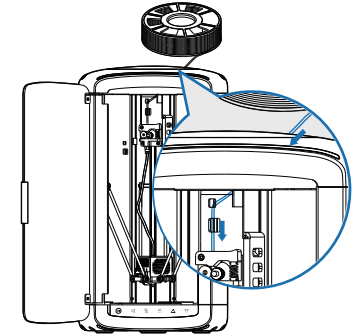
- 1 Connect power .

* Please take out the foam before installation.



- 3 Press the spring and insert the material from the hole on the top of the extruder to the top of the feed tube.

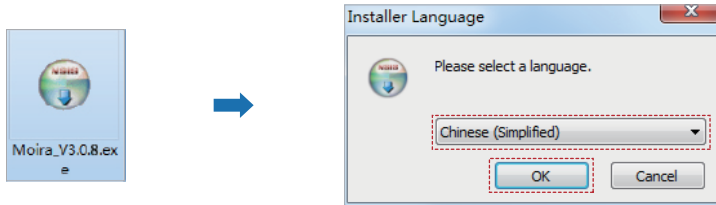
* Please wait until software is complete, the filament goes auto-loading.



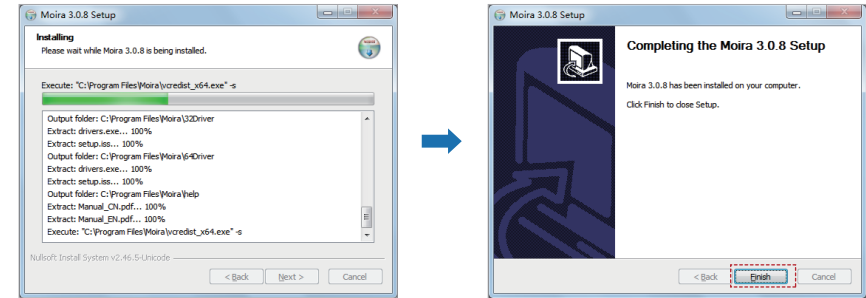
- 2 Remove the materials socket cover by an anticlockwise rotation. Open the package of materials, take the head-end of the materials and cut the deformed part. Put the materials head-end through the hole on the side of feed bin. Put materials into the feed bin, close the materials socket cover by a clockwise rotation.

Software Installation

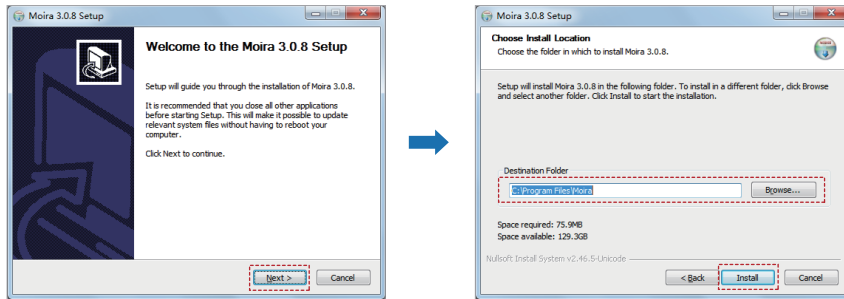
Installation Package in SD Card, or download the MoiraSoft installation pack (Windows/- Mac version) through official website <http://www.dedibot.com/service>.



1 Double click to open the exe file, follow the instruction to select display language.



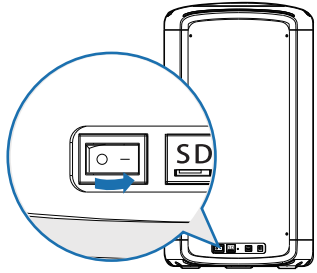
3 Click "Finish" to complete the MoiraSoft installation.



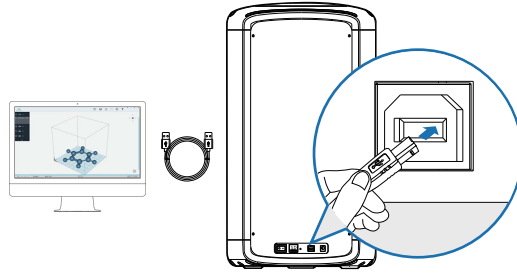
2 Follow the instruction to set the installation path and click "Install" to continue.

* In case there is error message after installation, please check your computer setup.
System requirement: win7+
Display card requirement: support OpenGL3.0 or above

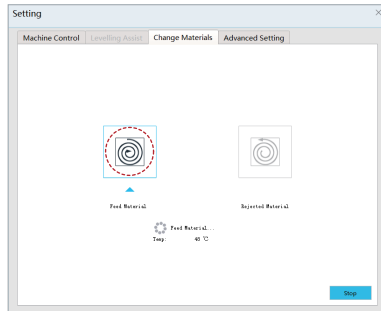
Print Preparation



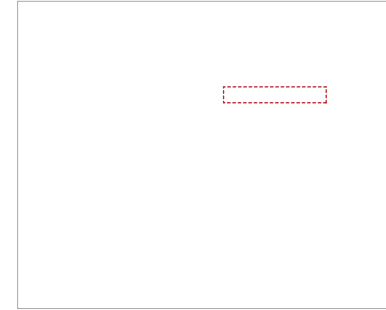
- 1 Connect power, switch on the printer.



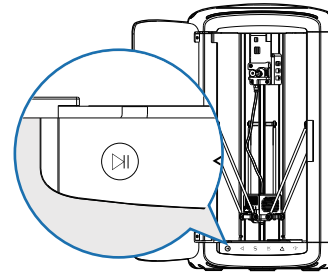
- 2 Connect the printer to computer with USB wire, and run MoiraSoft. Make sure the Status Bar at the bottom of the home page display "Connected".



- 3 Open the "Setting" menu of MoiraSoft, and select "Change Materials". Push the "Feed" button, and wait for the completion of feeding.

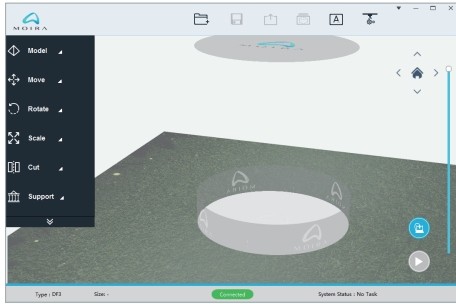


- 4 Please use default parameter for auto-leveling, the parameter is the space between printing platform and 3d model base, if model is hard to remove, then increase the parameter, if model is too loose, then decrease the parameter, suggesting the range between +/- 2mm. While machine is produced at the factory, the auto-leveling has been done, the default parameter is marked at platform sticker.

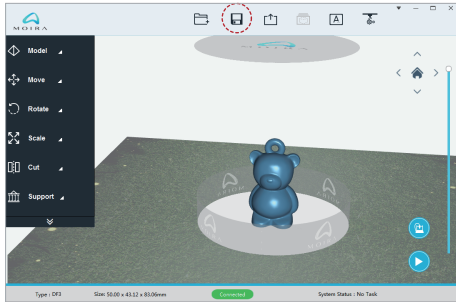


- 5 If you can't wait to print your first 3d-printed item, you could click at "One Click printing button" and print the model saved at the SD card, get in printing mode efficiently.
- 6 More printing courses please find below.

Print with PC

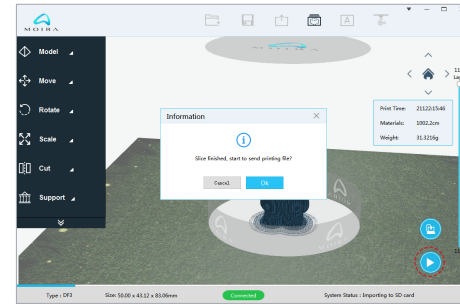


- 1 Connect the printer by USB wire, and open the Moira main interface.

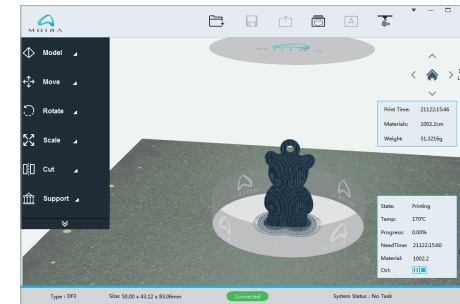


- 2 Click the "Open" button to import model file.

* More models, please find "Other Info" .



- 3 Click the "Slice Printing" button at the lower right corner of main interface to start the model slicing and file transferring.

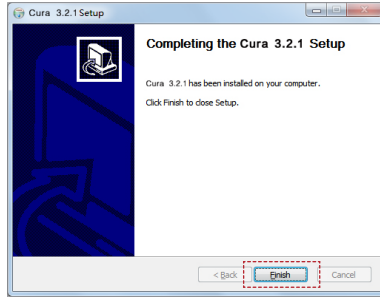


- 4 Once the file transfer complete, the printer will commence printing.

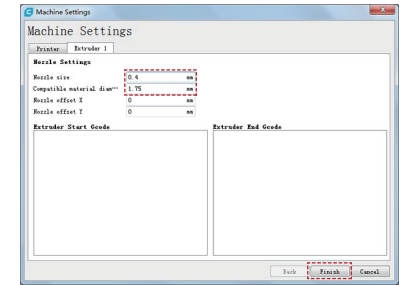
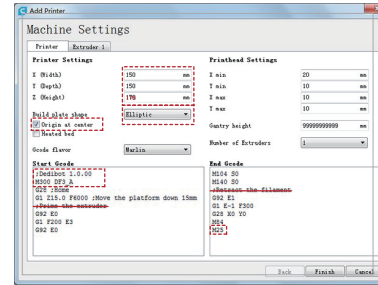
[Notice] :

If you use USD cable to print, please make sure SD card is inserted in the printer, once the document is transmitted completely, could unplug the cable and let 3d printer works on its own.

Print with PC

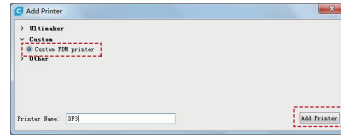
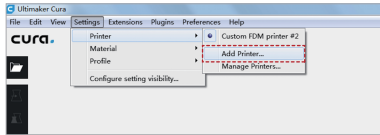


- 1 Double click Ultimaker Cura 3.2.1-win64.exe, follow the instruction guide for software installation.

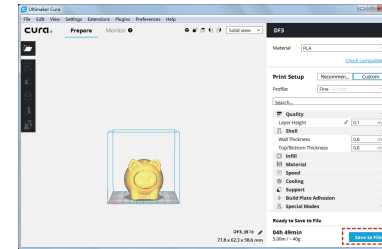


- 2 Setup Moira DF3 printing parameter settings.

**More setting method, please read " Manual e-file" .*



- 2 Add Moira DF3 Printer.



- 4 Click "Save Document" at the lower right, export gCode document to SD Card, insert SD Card to the printer, and click "One Click Printing" button for printing directly.

Print with Mobile APP

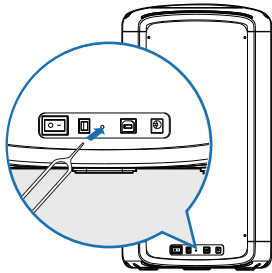
Go to Android market (Google play or Huawei) or Apple Store, search for "MOIRA" to download mobile app or scan below QR Code for finishing up download.



Android

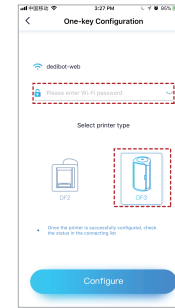
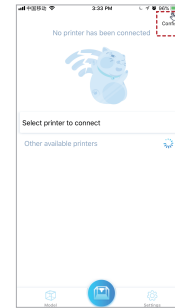


IOS

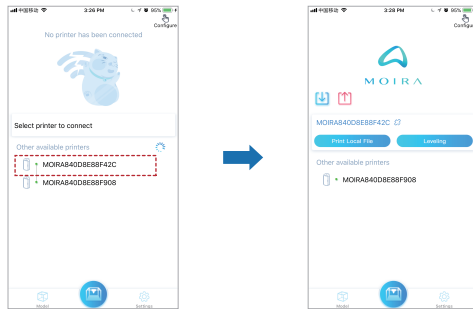


- 1 When using the printer for the first time or changed Wi-Fi network, press and hold the reset with resetting pin for 3 seconds till the Wi-Fi indicator light flashes.

**The success rate of allocation will be affected by your router.*

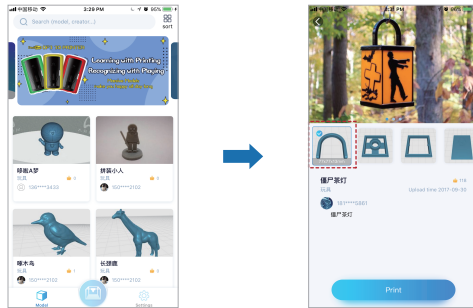


- 2 Once the mobile connected to Wi-Fi, open Moira App, enter the one-key configuration page, and enter the Wi-Fi password. Select the model for setting, press the "Configuration" button, and check the printer list after the configuration.

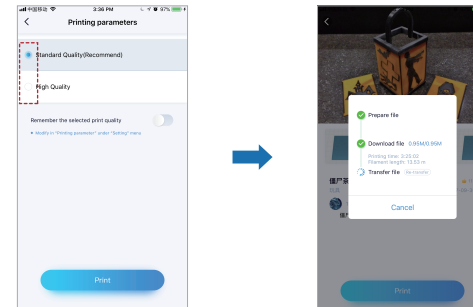


- 3 Click to connect the printer. Please confirm you have unplugged the cable before searching for 3d printer.

* Displayed name: Moira + Printer Mac Code.
Mac address is at the bottom of the printer.

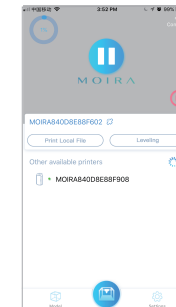


- 4 Choose the model on Model Page, open the detail page, select the model to print, and click "Print" button.



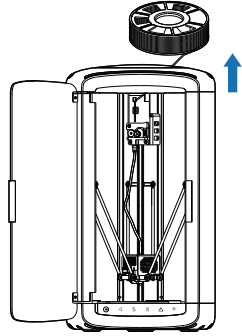
- 5 Choose print quality, and click the "Print" button. Then, start the cloud slicing, downloading, and file transferring.

* Due to the internet environment, the document transmission might take some time, in case of transmit failure, please transmit again

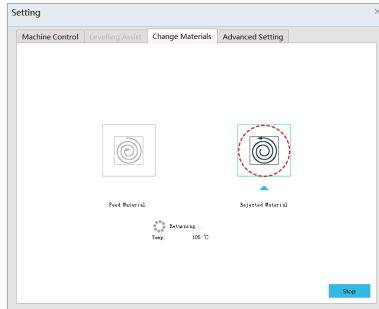


- 6 Once the file transfer complete, the printer will commence printing.

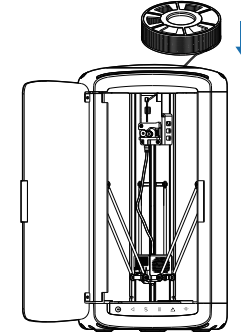
Change Materials



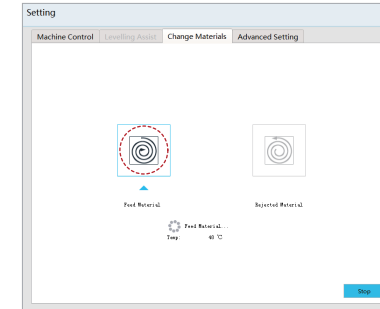
- 1 Open the cover anticlockwise, cut off the material and take out the material tray.



- 2 Select "Change Materials" in the "Setting", click "Rejected material" and wait to finish.



- 3 Pull out and replace with a new materials.
**Refer to [Printer Installation]*



- 4 On the PC Moira software, select "Change Materials" in the "Setting", click "Feed Material" and wait to finish.

Other Info

- **3d Model Library:**

Moira model library: www.3dmoira.com

Cloud model library: www.yumoxing.com

Thingiverse: www.thingiverse.com

**Please refer the respective website for model's intellectual property.*

- **Pick up the printed model:**






Once the platform performs the printing, in case the model is not too big, you could use the shovel to take down the model, or else, you could take the whole platform out, and take down the model. Once you put back the printing platform again, you could print directly, but auto-leveling might need to be performed again.

- **One click printing in two ways:**

- ① Connect Moira software, click the one click printing button in the software;
- ② Push down the "One click printing button" directly.

One click printing only loads the gCode or Dedi slicing documents in the SD card, and automatically loads the latest model saved.

Instruction light status

	Printing/standby instruction light	Once the printer is turned on, light, flashing while printing.
	Load/unload filament instruction light	flash while load or unload the filament .
	Nozzle heating instruction light	flash while nozzle is heating up.
	Error instruction light	continue to light once error is occurred. <i>*Please connect to Moira software to check the reason of error, once you couldn't handle by own-self, please connect customer service.</i>
	Wifi connection instruction light	quick flash while allocating, slow flash while connecting to Wifi, keep lighting once it's connected .

■ Problems & Solutions ■

Q: How to install the machine and how to start printing ?

A : More information please refer to www.dedibot.com/en/service to download the operating video.

Q: How to select the needed printer from the previous configured printer list on the App?

A: The printer list shows the printer Mac code, which is unique and affixed to the rear of the printer.

Q: How to deal with the temperature abnormality?

A: Please switch off the printer for at least 30 minutes. If the error indicator light keeps flashing, please contact the after-sales service staff.

Q: How to deal with the continuous flashing of the error indicator light?

A: Please check the details by connecting to MoiraSoft, and follow the indicator to take the next step.

■ Disclaimer ■

This manual is the indicator for installation, operation and maintenance, not the warranty booklet. DediBot Intelligent Technology Co., Ltd. endeavors to ensure the accuracy and completeness of the manual, and will not be responsible for the error or mistakes in the document. Meanwhile, DediBot reserves the rights to interpret and modify the layouts and errors of this manual. The documents are subject to change without notice. For more information about changes, please contact after-sales service or visit the official website to download the latest version.