

Neye3C User Manual

APP Download

- Search "Neye3c" in Google Play or App Store; Scan the APP QR Code.



App Store Android

Installation Cautions

1. Please check the voltage of power supply before installation. Format the TFcard when using this product for the first time.
2. Please make sure the SSID and password are only english letters and numbers.
3. This product does not support 5G signal for the time being. Please reconnect the 2.4G signal to configure.
4. Keep the camera close to the router for configuration.

This manual is for reference only, and the ultimate interpretation belongs to the manufacturer. Products are subject to update without prior notice

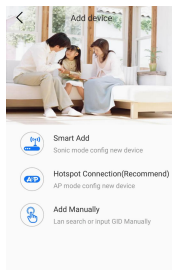
Hotspot Connection (Android)

Installation guide:

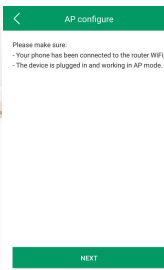
Power on, and make sure the indicator light is on.

After the system startup is completed and hear the voice prompt "Entering the AP configuration, Please configure WiFi". Then can refer to the instructions.

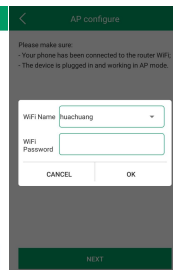
Note: If there is no voice prompt, please long press the "Reset" button and wait for the voice prompts.



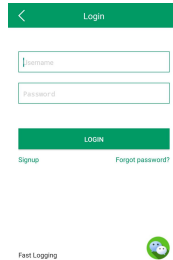
2. Click "Hotspot Connection"



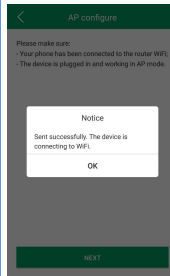
3. Confirm device and mobile status



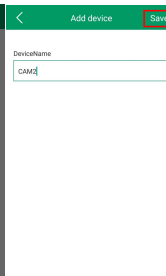
4. Fill in the WiFi information and confirm



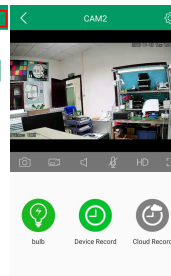
1. Register and login



5. Wait for device WiFi connection



6. Click "Save"



7. Live preview

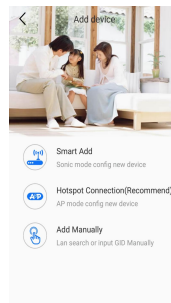
Hotspot Connection (IOS)

Installation guide:

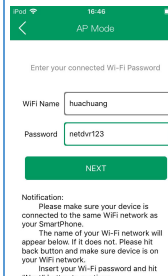
Power on, and make sure the indicator light is on.

After the system startup is completed and hear the voice prompt "Entering the AP configuration, Please configure WiFi". Then can refer to the instructions

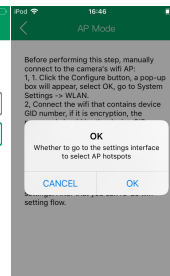
Note: If there is no voice prompt, please long press the "Reset" button and wait for the voice prompts.



1. Click "Hotspot Connection"



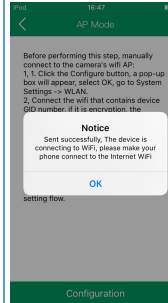
2. Fill in the WiFi information



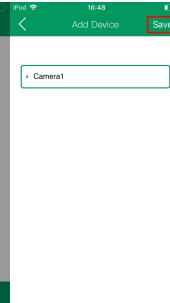
3. Follow the prompts to the 'Settings'



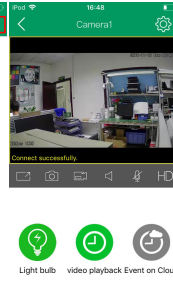
4. Connect to WiFiCAM hotspot



5. Return to APP, and click "Configure"



6. Wait for the phone and camera connected to WiFi and click "Save"



7. Live preview

Smart Add

Installation guide:

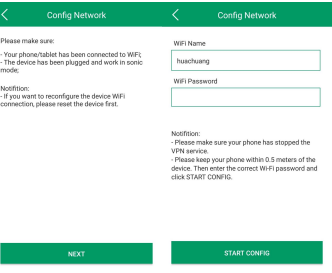
Power on,and make sure the indicator light is on.

After the system startup is completed and hear the voice prompt "Entering the AP configuration,Please configure WiFi". Then can refer to the instructions.

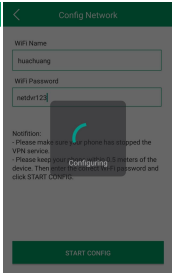
Note:If there is no voice prompt,please long press the "Reset" button and wait for the voice prompts.



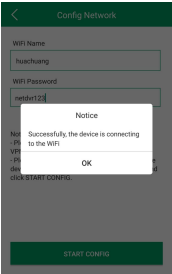
1. Click "Smart Add"



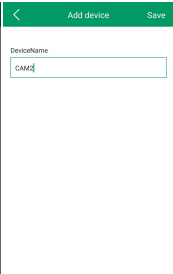
2. Confirm device and mobile status



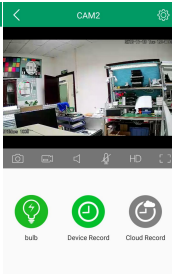
3. Fill in WiFi information



5. WiFi Configuration Completed



6. Click "Save"



7. Live preview

Early Warning

Introduction:

If someone enters the monitoring area,camera judges by the humanoid detection algorithm,turn on speaker voice warning and white light,output to the external alarm device and push to APP.

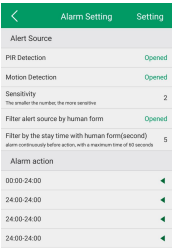
PIR Infrared: Turn on PIR Human Body detection;

Motion detection: turn on motion detection;

Sensitivity: Motion detection sensitivity;

Filter alert source by human form: Detect human form and resolve false positives.

Notes:Click "Setting" icon to configure Alarm Setting.



APP receiving alarm

Introduction:

The mobile will receive an alarm message after the device alarms. And the live video can be played immediately when the user clicks on the call.

- Set to receive alarm in APP alarm settings (Figure 1) ;
- When the device sends an alarm, the mobile receives the alarm(Figure 2) ;
- Click the answer button and enter the live preview.

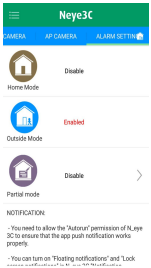


Figure 1

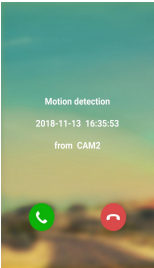


Figure 2

Cloud Storage

Introduction:

After cloud storage is activated, cloud recording will be performed.

- Click "cloud service" on preview interface and enter cloud storage ;
- Buy the storage plan, cloud storage service can be used after successful payment.



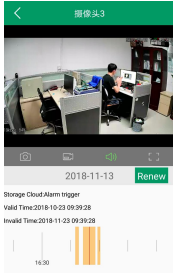
Notes:Please enable camera warning function for using alarm cloud storage

Cloud storage playback

Introduction:

Check the cloud recording data of the device

- Click "cloud service" on preview interface ;
- Select the date and time to check the record ;
- You can check and renew the cloud storage plan on this page.



Playback

Introduction:

Check the recording data in SD card remotely.

- Click "Playback" on preview interface ;
- Select the date and time,and check the record ;

The color in the progress bar is as follows:
Green: Planned recording
Orange: Alarm recording
White: No recording

