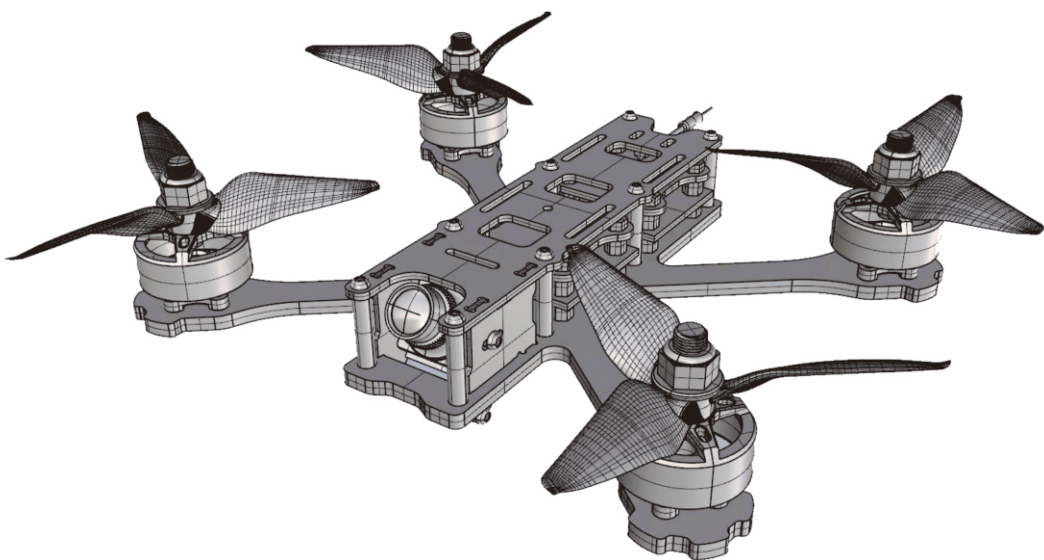


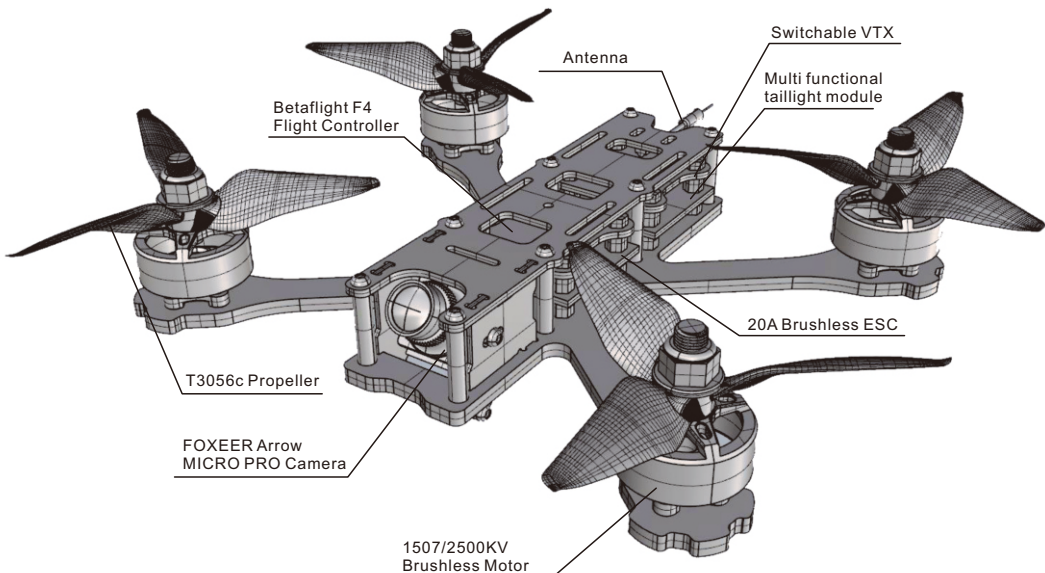
X140HV

QUICK START GUIDE



Package included:

- 1 x X140HV Frame Kit
- 1 x Atmosphere light strip
- 4 x 1507/2500KV Brushless Motor
- 1 x 4 In 1 20A Brushless ESC
- 1 x Betaflight F4 Flight Controller
- 1 x FOXEER Arrow MICRO PRO Camera
- 1 x XF5805 /5.8G 40CH 25/100/200/300mw Switchable VTX
- 1 x Multi functional taillight module
- 8 x T3056c Propeller (transparent purple * 2 Pairs / transparent * 2 Pairs)
- 2 x 150*15mm battery strap
- 1 x Battery board set (2mm battery protection plate*1 , EVA plate*2 , Anti-slip plate*1)
- 4 x M5 screws nut (black color*2 , silver color*2)
- 1 x Screw set
- 10 x 2.5x100mm Nylon cable tie
- 2 x Wrench



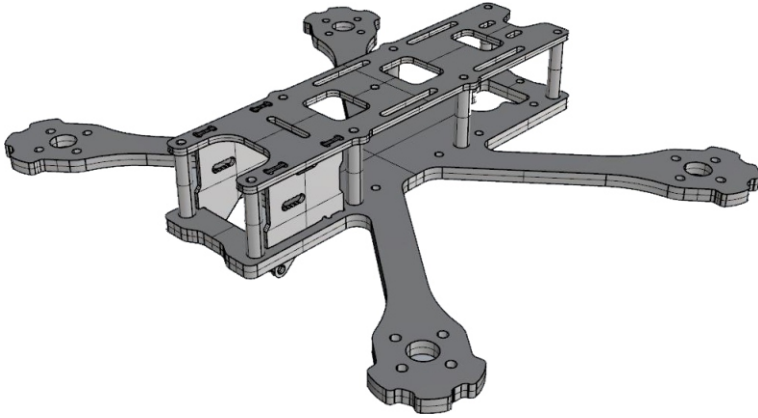
Contents

| | |
|--|----|
| 1.0 Frame kit----- | 04 |
| 2.0 Motor----- | 04 |
| 3.0 Esc----- | 05 |
| 4.0 Flight controller----- | 05 |
| 5.0 Switchable VTX----- | 06 |
| 6.0 Camera----- | 06 |
| 7.0 Atmosphere light strip----- | 07 |
| 8.0 Motor Unlock/Lock----- | 07 |
| 9.0 Multi functional taillight module----- | 07 |
| 10.0 Traversing flight----- | 08 |



1.0 Frame kit

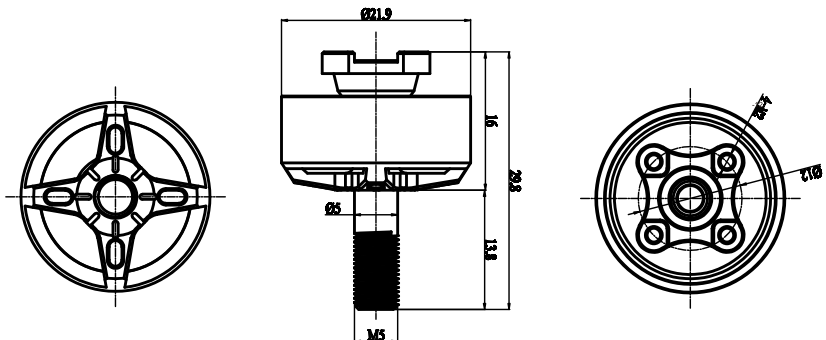
Wheelbase: 140mm
 Floor thickness: 3mm
 Upper plate thickness: 1.5mm
 Side panel thickness: 1.0mm
 CNC 6065 Custom Aluminum Column



2.0 Motor

KV: 2500kv
 Voltage: 2-6s
 Weight: 17.7g (including line)
 Output shaft length: 14mm
 Maximum pulling force: single 740g
 (6S/3056 three-leaf paddle)
 Maximum power: 480w

Number of slots: 9n12p
 Mounting hole spacing: 12*12mm
 Mounting hole specification: m2
 Bearing: nsk
 N52 NdFeB magnet
 Recommended paddle: 3 inches



3.0 ESC

Continuous current: 20A

Peak current: 25A (10s)

Bec output: NO

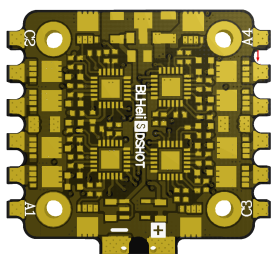
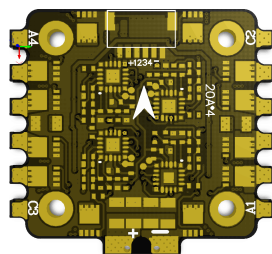
Input voltage: 2 ~ 6 s

Main control chip: 48mhz efm8bb2

Firmware upgrade: support dshot600 /blheli _ S/Oneshot125

MOS: 3*3

MOS model: pe632ba 30v53a



4.0 Flight controller

Main control chip: stm32f411

IMU: mpu6000 6-axis sensor

BEC: 5v/1a

Integrated OSD

PPM/DSM/IBUS/UAR sharing: UART1-RX

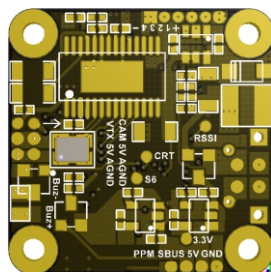
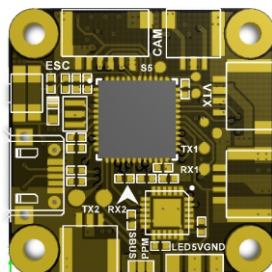
Installation size: 20*20

Weight: 3.0g

Support firmware: betafight/cleanflight/inav

Support for programmable LED Sprit

Reserve buzzer interface



5.0 Switchable VTX

Support TBS SmartAudio

Transmitting power: 25/100/200/300mw adjustable in three steps

Frequency points: 40ch

Video format: full NTSC / PAL format

Input voltage: 7V ~ 26V

Power consumption: +12V/600MW, 260ma

Size: 25 × 20 × 4mm

Weight: ≤ 3.2g (except antenna)

With copper tube mini antenna (ipex interface)

Tips: Before powering up, you must first install the antenna to avoid the possibility of burning the tuner.

| Band | CH1 | CH2 | CH3 | CH4 | CH5 | CH6 | CH7 | CH8 |
|--------|------|------|------|------|------|------|------|------|
| Band-A | 5865 | 5845 | 5825 | 5805 | 5785 | 5765 | 5745 | 5725 |
| Band-b | 5733 | 5752 | 5771 | 5790 | 5809 | 5828 | 5847 | 5866 |
| Band-E | 5705 | 5685 | 5665 | 5665 | 5885 | 5905 | 5905 | 5905 |
| Band-F | 5740 | 5760 | 5780 | 5800 | 5820 | 5840 | 5860 | 5880 |
| Band-r | 5658 | 5695 | 5732 | 5769 | 5806 | 5843 | 5880 | 5917 |

6.0 Camera

Image sensor: 1/3" Sony Super Had II CCD + NextChip 2040 DSP

Pixel: PAL: 976 (H) × 494 (V); NTSC: 768 (H) × 494 (V)

TV system: PAL

Resolution: 600TVL (color) 650TVL (black and white)

Synchronization: internal

Minimum illumination: 0.01lux

WDR: Support

OSD programming board: support

White point repair: support

DNR: 2D DNR

Camera title: support

Image adjustment: support

OSD: Edit Name, Power, Flight Time

Input power: 5-40V

Storage temperature: -40 C~60 C

Working temperature: -10C~50C

Power consumption: 70ma

Low pressure alarm: support

Default mode: def, vivative, sunny, cloudy, led tr, usr1

Size: 18.5*19mm (without bracket)

Weight: 5.3g (without bracket)



7.0 Atmosphere light strip

Feature: Low power consumption, no heat, no impact on flight time. Only 10% of the power consumption of traditional LEDs. Beautiful, soft, not dazzling. Lines can be bended, folded and sheared at will. The installation is flexible and convenient for you to play freely, Long life.

8.0 Multi functional taillight module

Working voltage: 5v

Integrated programmable taillight / bb ring / light strip drive

RGB full color highlight WS2812b lamp beads *2

Integrated 80dBi buzzer

Integrated photon emission line driver

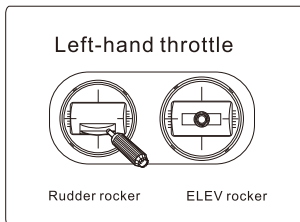
Size: 20*20

Weight: 3.5g

9.0 Motor Unlock/lock

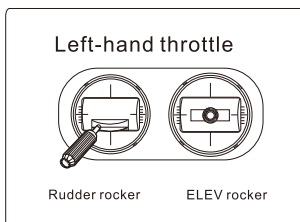
Motor Unlock

Put the throttle rocker at the lowest point, move the rudder rocker to the right and keep it for more than 2 seconds. The blue state indicator is always on, that is unlock the motor.

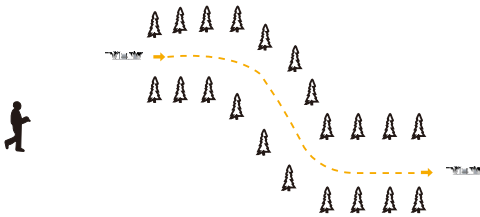


Motor lock

Put the throttle rocker at the lowest point, move the rudder rocker to the leftmost side, and the red state indicator is always turned on to lock the motor. At this time, pushing the throttle rocker motor upward will not rotate.



10. Traversing flight



- 1). Flying is more suitable for experienced pilots.
- 2). During the flight, please keep the flight within the video receiving range (the actual range depends on the flight environment and weather conditions).
- 3). During flight, please avoid crowd, animals and High voltage wires and other obstacles