

**LANGFEITE**



Electric



Personal



Mobility

# User Manual

Model No.: L8

Congratulations on your  
new Model L8 Dual Motor  
electric scooter !

We are happy you chose  
to Ride new L8 Dual Motor  
Electric Scooter.

We hope you find it to be  
a Great riding experience,  
Adding efficiency and fun  
to Your daily commuting.

This manual was written to help you understand the proper use and maintenance of model L8 electric scooter. It is important for you to understand your new MODEL L8 electric scooter; its features and performance, so that you will enjoy the most from your first and every ride. Also, it is important that your first ride with model L8 will be in a remote location, without any obstacles.

**Always follow the local laws and regulations.**

- Never ride your L8 scooter in conditions of poor visibility.
- Do not do stunts, wheelies or jumps. They will increase your chances of injury and damage your model L8.
- Never carry passengers

The responsibility for model L8 maintenance is yours, and will help reduce risks of injuries. Therefore, read this manual and follow it's instructions, they will help you avoid these risks.

We're not liable for incidental damages or consequential damages due directly or indirectly to the use of this product.

# L8 DUAL MOTOR





Specification		
Size	Overall size (MM)	1160*570*1210 mm
	Size after folding (MM)	1140*220*470 mm
	Carton size (MM)	1200*270*540 mm
Weight	Max. Loading (KG)	150kg
	Net weight (KG)	28kg
Application	People Age	Adult
Speed	Top speed (KM/H)	45km/h
	Range (KM)	10Ah 30km, 15Ah 45Km, 20Ah 60km ( With 75kg load, on a flat road )
	Grade Ability	35 degree
	Working temperature	-10°C~40°C
	Storage temperature	-10°C~40°C
Battery	Battery type	18650 Lithium battery
	Rated voltage (V)	48V
	Input voltage (V)	54.6V
	Battery capacity (AH)	20.8Ah
Motor	Motor type	DC brushless motor
	Motor rated power	800 Watt * 2 Motors
	Rated output power	Peak 1200 Watt * 2 Motors
	Rated voltage	48V
Charger	Rated power (W)	109.2W
	Input voltage (V)	100-230VAC
	Output voltage (V)	54.6V
	Rated current	2A
	Charging time	10 Hours
Other features	Wheel size	10 inch tubeless tires
	Frame material	Aluminium alloy 6061
	Waterproof	IP54
	Suspension	Front suspension*2 + Rear suspension*2
	Display	color display
	Speed up	Throttle
	Brake	front disc brake + rear disc brake + electronic brake
	Color	Black

Optional

Double charging point, Seat

1210MM



1160MM



470MM

1140MM

Pull left

Pull right



Fold the handle-bar



Unfold the handle-bar



Press quick release



loosen quick release

# DISPLAY INSTRUCTION



ON/OFF button




MODE button




Battery status

## THROTTLE POWER ON


Pressing  to power the scooter on.


## THROTTLE POWER OFF

Press  for three seconds to shut down the system.



## AUTO OFF

After five minutes of non-using any function, the scooter will automatically shut down.

In power on condition, pressing  by turns, we can find **TRIP**, **ODO**, **VOL** on the LCD display. **TRIP** is Single mileage, **ODO** is cumulative mileage, **VOL** is battery voltage

Pressing  by turns to change the speed mode, **1** is slow speed, **2** is medium speed, **3** is fast speed.

# Parameter settings

Pressing  together with  at the same time, will enter the instrument parameter setting interface.

First of all we can see **P00**, then press  by turns, we can find **P01, P02, P03, P04, P05, P06, P07, P08, P09**

- P00:** Wheel diameter setting
- P01:** Under-voltage setting
- P02:** Number of pole pairs setting
- P03:** Speed signal selection setting
- P04:** Km / Mile selection setting
- P05:** Non-zero start and zero start selection settings
- P06:** Cruise and non-cruise selection settings
- P07:** Soft start and hard start selection settings
- P08:** Speed limit adjustment in percentage
- P09:** EBS brake strength adjustment

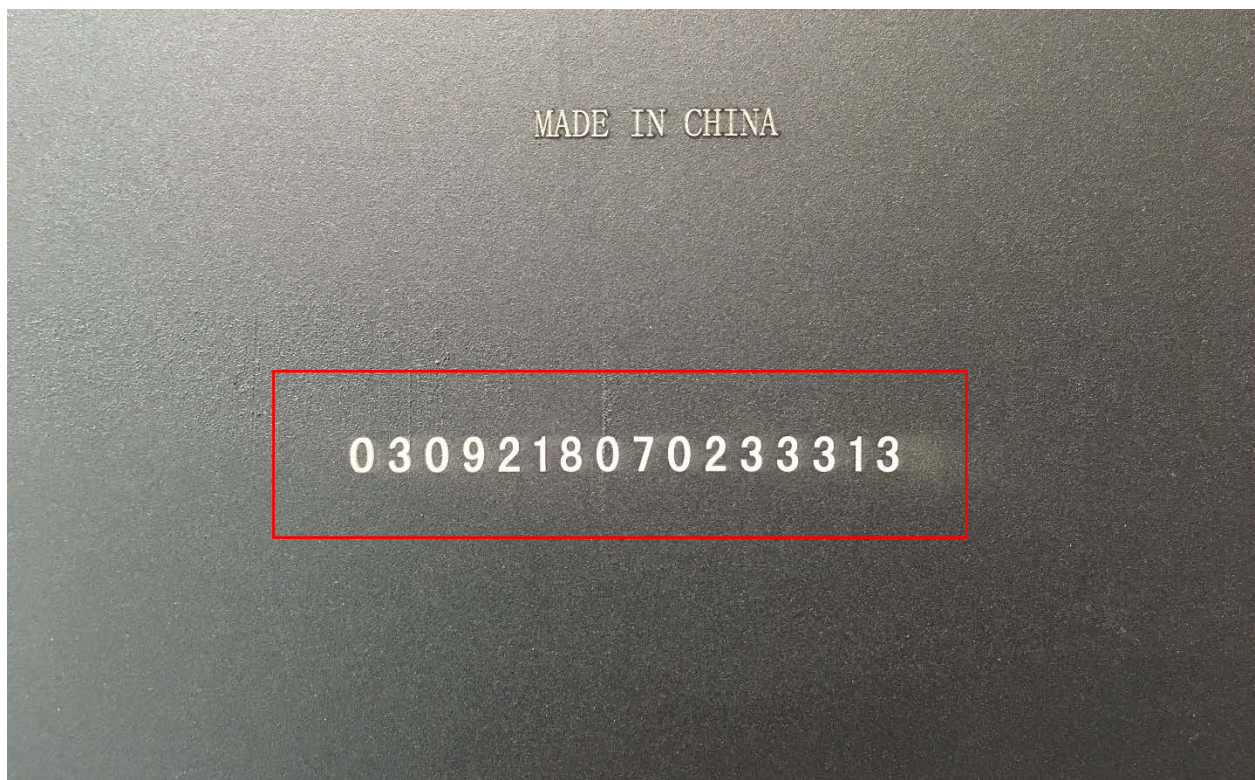
### RECORD SERIAL NUMBERS:

Write down the serial number of your model L8. Keep this information separately and in a safe place. Each model L8 has a unique serial number. These numbers can provide information that may be useful later on for insurance claims and in case of loss or theft.

To find your model L8 serial number:

1. The number is on the backside of the board, for example as below:

**Serial number: 030921807023313**



# HOW TO FOLD L8 SCOOTER



1



2



3



4



5



6



# CHARGING AND BATTERY

Your model L8 has an external charger.

Connect the charging cable to Model L8's charging socket under the footboard, on the right side at the rear. Then connect the charger's electric cable to an electrical outlet.

Charging Light **Red** - Battery is charging.

Charging Light **Green** - Charging is complete.



## MAXIMIZE YOUR BATTERY'S PERFORMANCE:

1. **For its initial charge, FULLY charge your L8**  
This conditions the battery for future life-span
2. **Do NOT leave a fully charged battery connected** to a charger,  
since overcharging may shorten its lifetime
3. **Avoid extreme temperatures** Always try to keep the battery between 15°C and 25°C (59°F and 77°F). Extreme temperatures reduce the capacity and lifetime of the battery. A device with a hot or cold battery may not work temporarily
4. **At least once a month** fully charge the battery
5. **From time to time discharge the battery** by riding.  
Use all stored energy in the battery
6. **Before storing it for a long period** charge the battery half way



## BATTERY SAFETY REGULATIONS:

**Do not operate the scooter while charging!**

**Charge the battery only using Kerry Motors approved charger**

The use, storage or charging of the L8 battery outside specified limits may result in the annulment of the warranty, battery damage, and an ineffective battery charge

**DO NOT CUT, OPEN, CRUSH OR PUNCTURE BATTERIES!**

**IN THE EVENT OF A BATTERY LEAK, PREVENT CONTACT OF LIQUID WITH SKIN OR EYES. IF THIS HAPPENS, WASH THE AFFECTED AREAS IMMEDIATELY WITH WATER AND SEEK MEDICAL HELP**

## SAFETY DRIVING ATTENTION

**Get to know your L8 before driving it** Test your control over it. Make your turns slowly and cautiously, and give yourself stopping distance

To gain control over your scooter, practice your first ride on your L8 in an open space with no obstacles to disturb you

The L8 requires a short **adjustment and break-in period** for all moving parts to adjust themselves into their correct position

### **Before each ride always:**

1. Check your brakes function
2. Check the tires for signs of wear  
Spin them to make sure that they are not yet in need of replacing Make sure that the wheels are freely rotating clear of the brakes
3. Perform a visual inspection :  
That all screws and nuts are tight and in place  
Note if anything looks amiss, or is showing signs of wear

**If you are unsure, bring your L8 to Kerry Motors authorized distributor**

### RIDING TECHNIQUE:

**Before riding** position your foot as close as possible to the front section of the scooter, and your other foot on the ground. Make sure that your driving route is clear

**To start riding**, boost yourself forwards (as on non-motorized scooters) with your foot that is on the ground. Place it on the scooter immediately afterwards and press the thumb lever downwards, tilting your body forwards, so you won't fall backwards during acceleration





**As you accelerate, lean forwards.  
As you brake, tilt your weight backwards!**

**Avoid putting body weight** on the handle bars whilst accelerating and decelerating!

**Keep one foot behind the other**, (it's more comfortable to place one foot forward and the other one turned backwards at 70-90°, like on skate/surfboard). It will help you gain more stability

**Turns** - The turns on L8 are done as on skis/surf/snowboard. The handle-bar should be in parallel to the body. Before turning look at the approaching direction and make sure turning is safe

**Braking** - Tilt your weight backwards so that the brake action will come through the feet and not through the handlebar and steering system. It is best to learn how to adjust the centre of gravity while stopping, otherwise there is a dual concern: forward tipping over and/or wear and breaking of the handlebar and steering system



Riding, like most sports, involves risks of injury and damage. By choosing to ride L8 scooter the responsibility and all inherent risk is on you. It is crucial that you know, understand and act according to safety rules



10 20 30 40 50 60 70 80 90 100

# Warranty Card

Product Information	Item Name:	Model:	Serial Number:
User Info	Name:	Telephone:	Postcode:
	Address:		
Information of Distributer	Name:		Telephone:
	Sale Date:		Sales Address:

Maintenance Record	Submission Date	Maintenance Situation	Maintenance Results	Signature