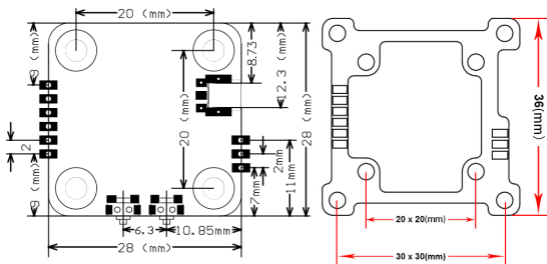
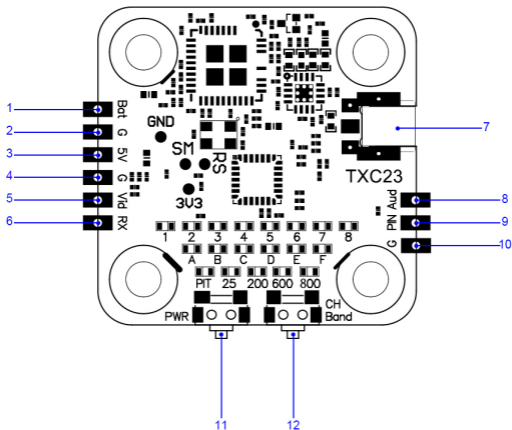


Product specifications

- Model:EACHINE TXC23 VTX
- Input voltage:DC 6-36V
- Output voltage:5V/1A
- 12V/PIT@30mA
- 12V/25mW@140mA/16dBm
- 12V/200mW@190mA/24.5dBm
- 12V/600mW@280mA/28dBm
- 12V/800mW@330mA/30dBm
- Antenna interface:MMCX
- Output power:PIT / 25mW / 200mW / 600mW / 800mW switchable
- Frequency:5.8GHz 6 bands, 48 channels
- Size:VTX (28mm x 28mm x 1.6mm)
- External Expansion Board (36mm x 36mm x 1.6mm)

Product dimensions:





1.DC IN(2~8S LiPo)	2.GND	3.DC OUT 5V	4.GND
5.VIDEO	6.RX	7.MMCX	8.AUD
9.PIN	10.GND	11.PWR	12.CH/Band

1. Make sure the antenna is already installed at output before powering up, to avoid damaging the internal components.
2. Please note that the input voltage is within the specified range and wiring is correct, to avoid damaging the internal components.
3. Under high-power work, the temperature of VTX surface is high. No touching to avoid burning your fingers.



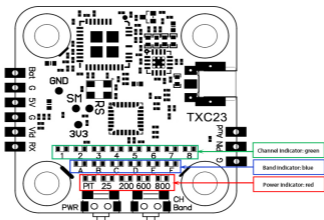
Power button settings:

1. Click the button to switch power. The power of this VTX is switched and cycled in the order of PIT→25mw→200mw→600mw→800mw.
2. Press and hold the button for more than 2 seconds to switch directly to PIT from the current transmit power;

CH/FR button settings:

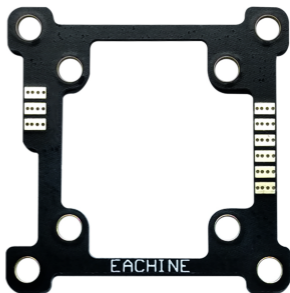
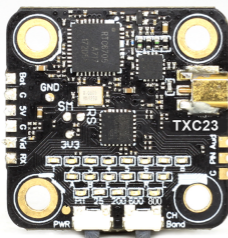
1. Click the button to switch channels, and the channel switches and cycles in the order of CH1, CH2, CH3...CH8 on the basis of the current channel;
2. Press and hold the button for over 2 seconds, and the band switches and cycles in the order of A→B→E→F→R→L on the basis of the current band;

		Frequency Table(Mhz)							
FR \ CH	CH1	CH2	CH3	CH4	CH5	CH6	CH7	CH8	
A	5865	5845	5825	5805	5785	5765	5745	5725	
b	5733	5752	5771	5790	5809	5828	5847	5866	
E	5705	5685	5665	5645	5885	5905	5925	5945	
F	5740	5760	5780	5800	5820	5840	5860	5880	
r	5658	5695	5732	5769	5806	5843	5880	5917	
L	5362	5399	5436	5473	5510	5547	5584	5621	



EACHINE TXC23 VTX

5.8G ISM band simulation VTX



Product Instruction
Manual