

T30 Trainer Airplane Instruction Manual



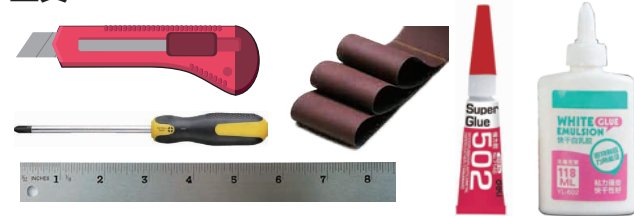
推荐配置
马达：2814-3520 600-1000KV
电调：40A
电池：4S 3600-5000mAh
舵机：17g*4
引擎：2C36 / 4C56
桨叶：10-12inch
通道：≥4CH

Suggested Equipment
Electric powered: 2814-3520 600-1000kv
ESC: 40A
Battery: 4S 3600-5000mAh
Servos: 17g*4
Gas engine class: 2C36 / 4C56
Propeller: 10-12inch
Radio≥4CH

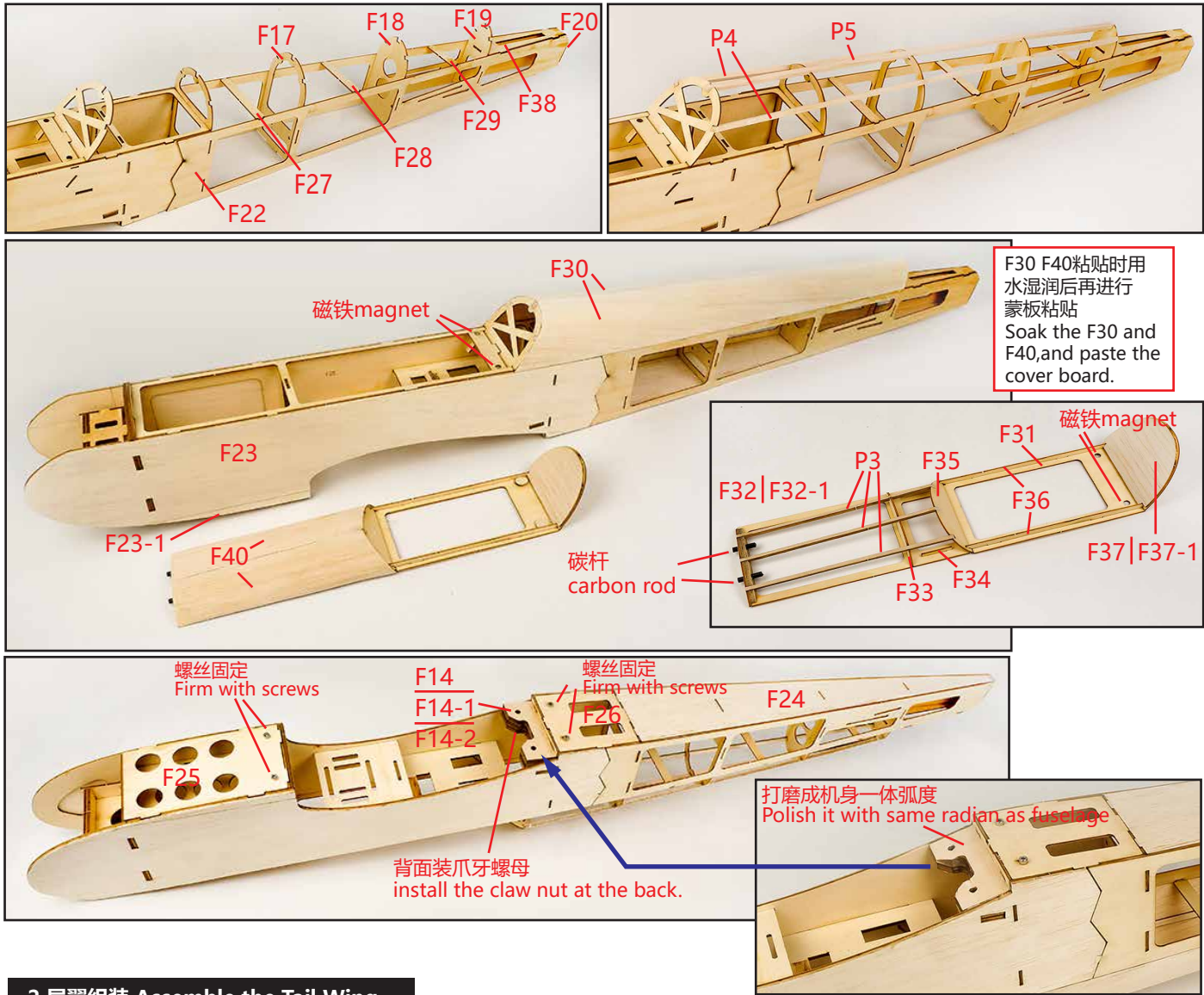
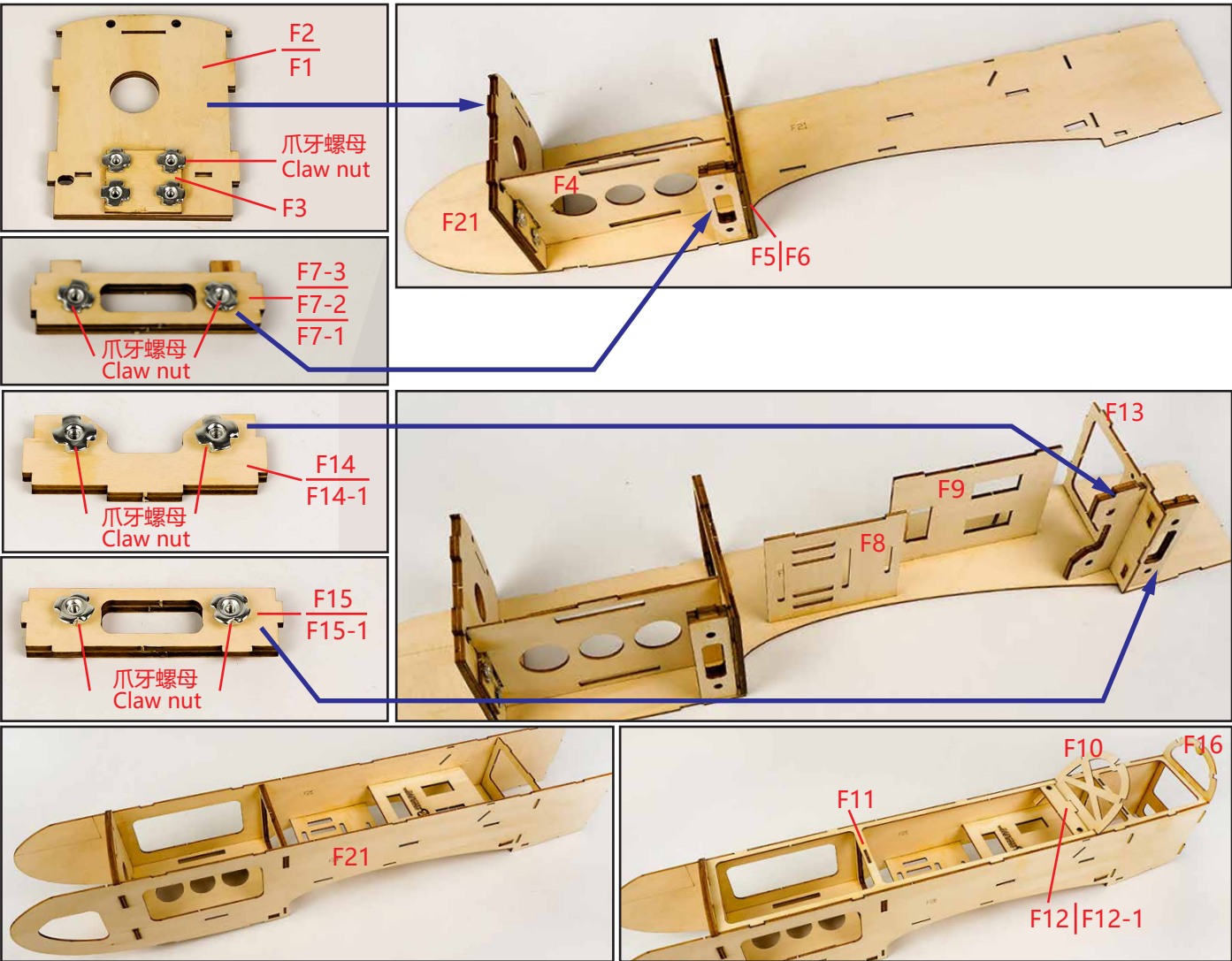
参数
翼展：1400mm
机长：1070mm
起飞重量：≈2000-2500g

Specification
Wingspan: 1400mm
Length: 1070mm
Flying Weight≈2000-2500g

工具 Tools Needed

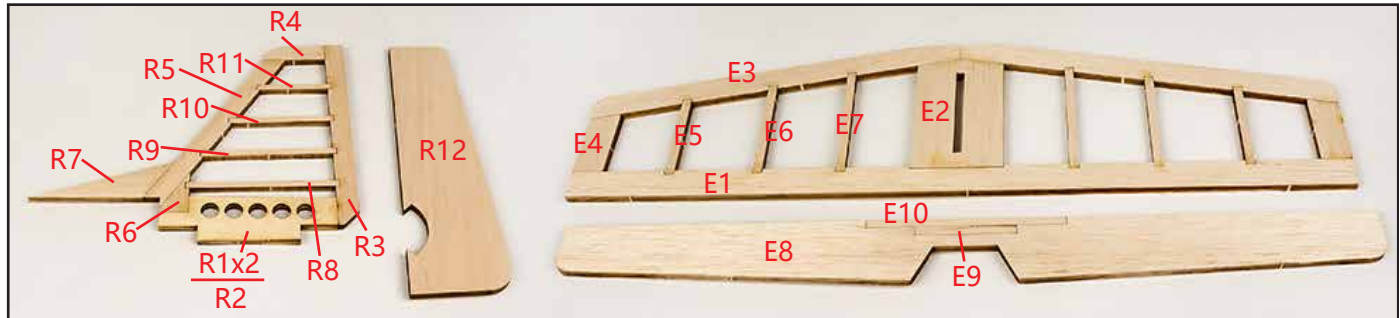


1.机身组装 Assemble the Fuselage

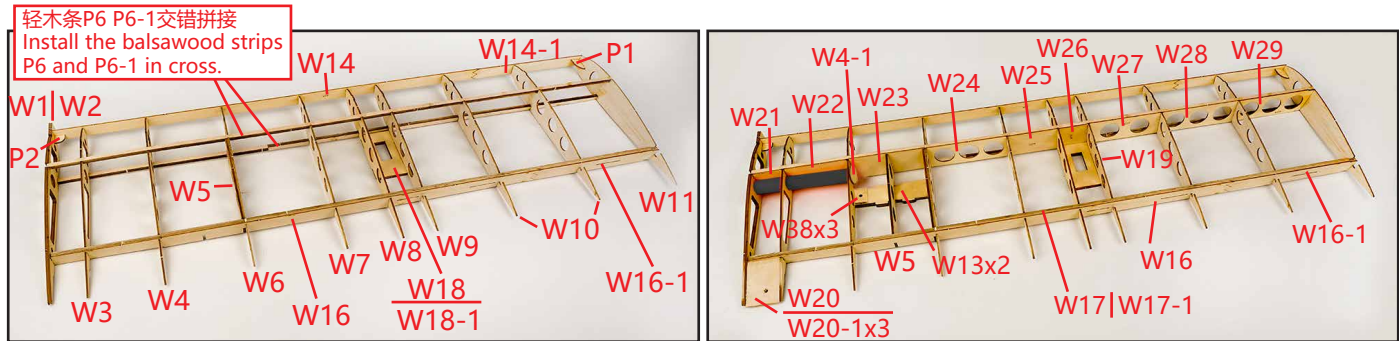


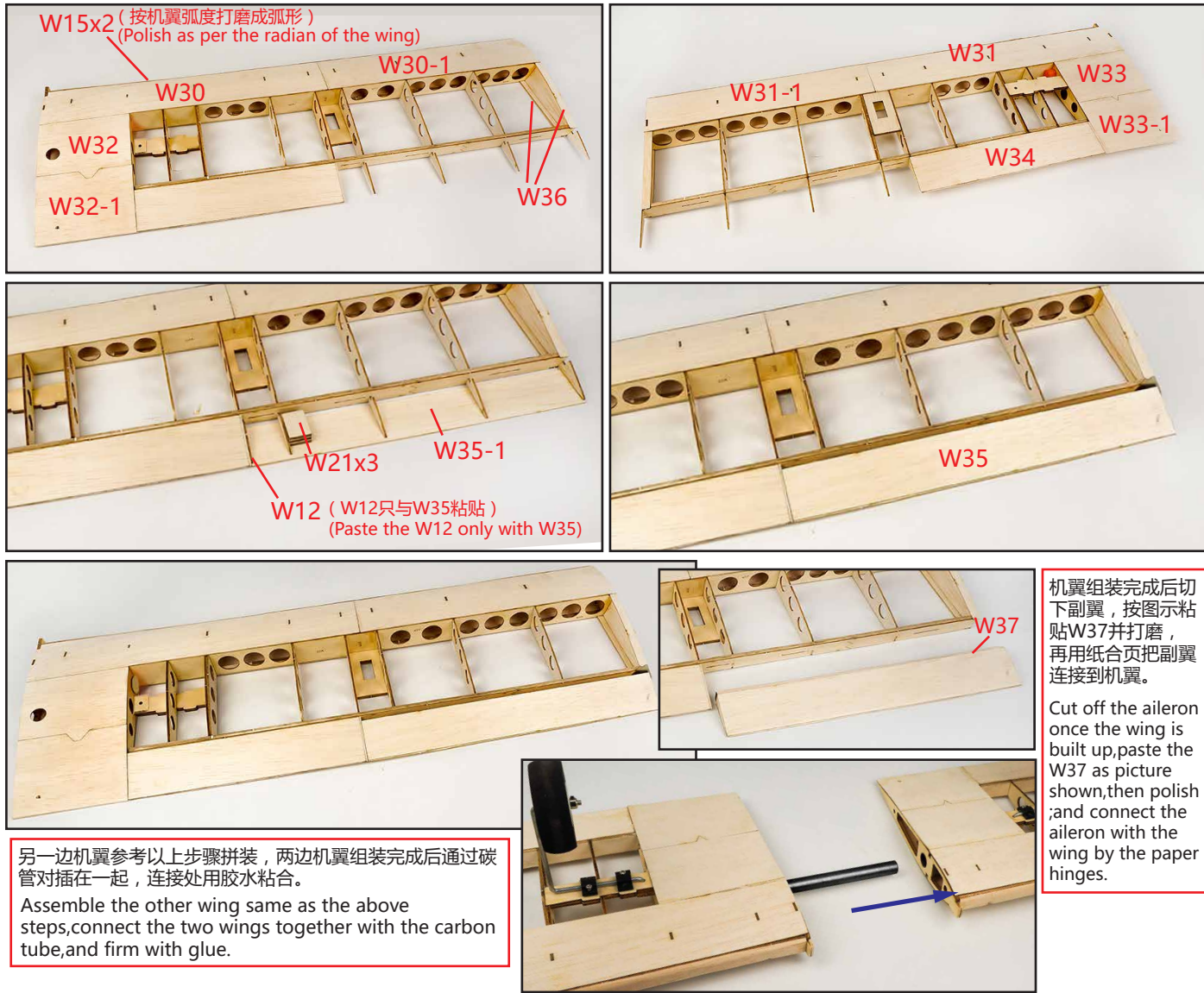
2.尾翼组装 Assemble the Tail Wing

机翼和尾翼请在平整的工作台上进行拼装，拼装时保持机翼平直。
Assemble the wing and tail on the smooth desk, make sure the wing is straight.

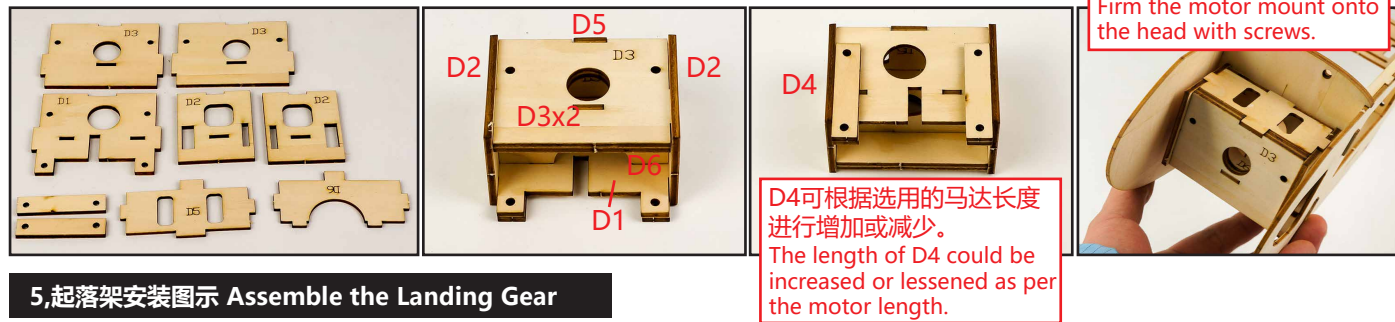


3.机翼组装 Assemble the Wing





4,马达座组装 Install the Motor Mount



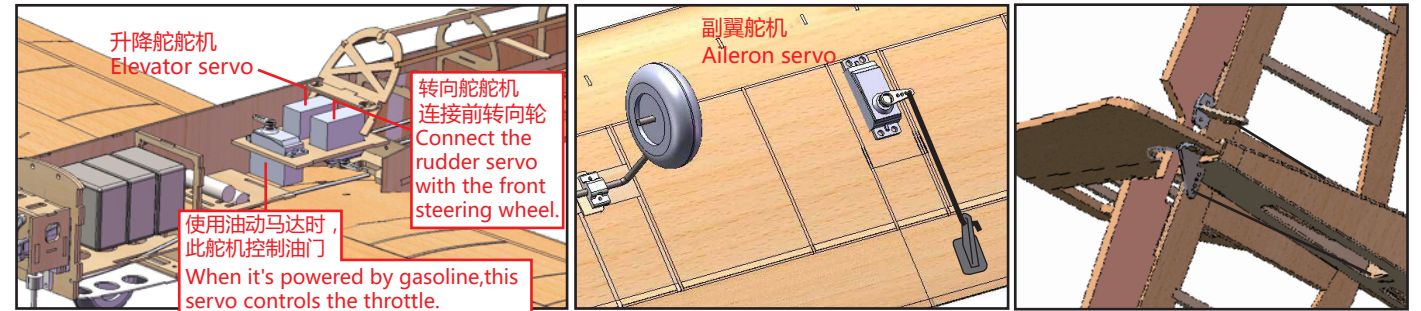
5,起落架安装图 Assemble the Landing Gear



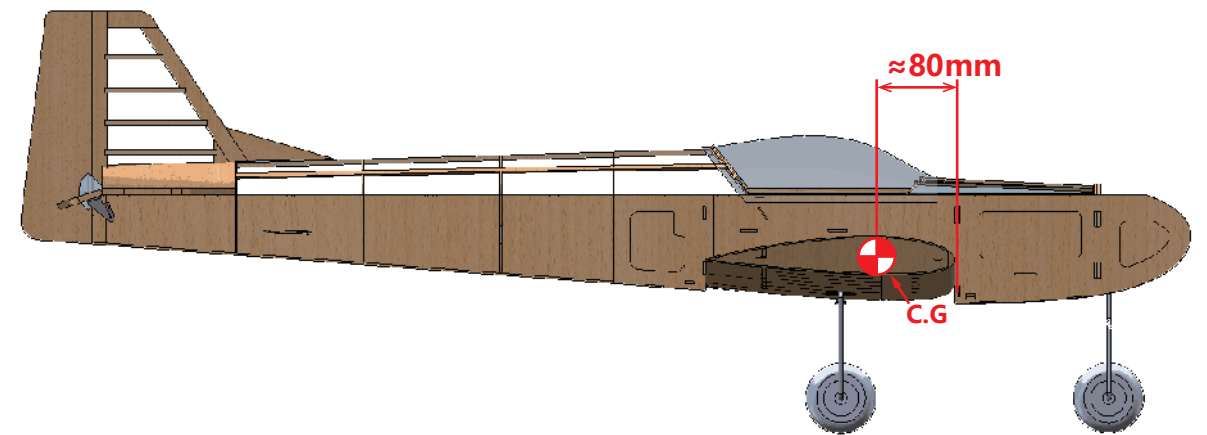
6,机翼及尾翼安装到机身图 Assemle the wing onto the fuselage



7,舵机,舵角安装图 Install the servo and servo horn



8,重心调试位置图 Adjust the C.G.



ADDITIONAL SAFETY PRECAUTIONS AND WARNINGS

Age Recommendation: This is not a toy, not for children under 14 years old.

1. Always keep a safe distance in all directions around your model to avoid collisions or injury. The model is controlled by a radio subject to interference from many sources outside your control. Interference can cause momentary loss of control.
2. Always operate your model in open spaces away from full-size vehicles, traffic and people.
3. Always carefully follow the directions and warnings for this and any optional support equipment (chargers, rechargeable battery packs, etc.).
4. Always keep all chemicals, small parts and anything electrical out of the reach of children.
5. Always avoid water exposure to all equipment not specifically designed and protected for this purpose. Moisture causes damage to electronics.
6. Never place any portion of the model in your mouth as it could cause serious injury or even death.
7. Never operate your model with low transmitter batteries.

