

## Thanks for choosing ENLiF cordless floor cleaning robot

- The nozzle sprayed with fan-shaped water mist can wet the ground evenly, the high-speed rotating rags can clean tiles, marble, wooden floor quickly and easily.
- Special cleaning rags and waxing rags could sweep the floor speedily and evenly, which can wipe and maintain the floor easily and effectively.



**ENLiF cordless floor cleaning robot, Smart's Enjoyment of Life  
wish you a happy to use**

The instructions can be checked by the URL: [www.enlif.net](http://www.enlif.net)

# ENLiF<sup>®</sup>

## ENLiF cordless floor cleaning robot

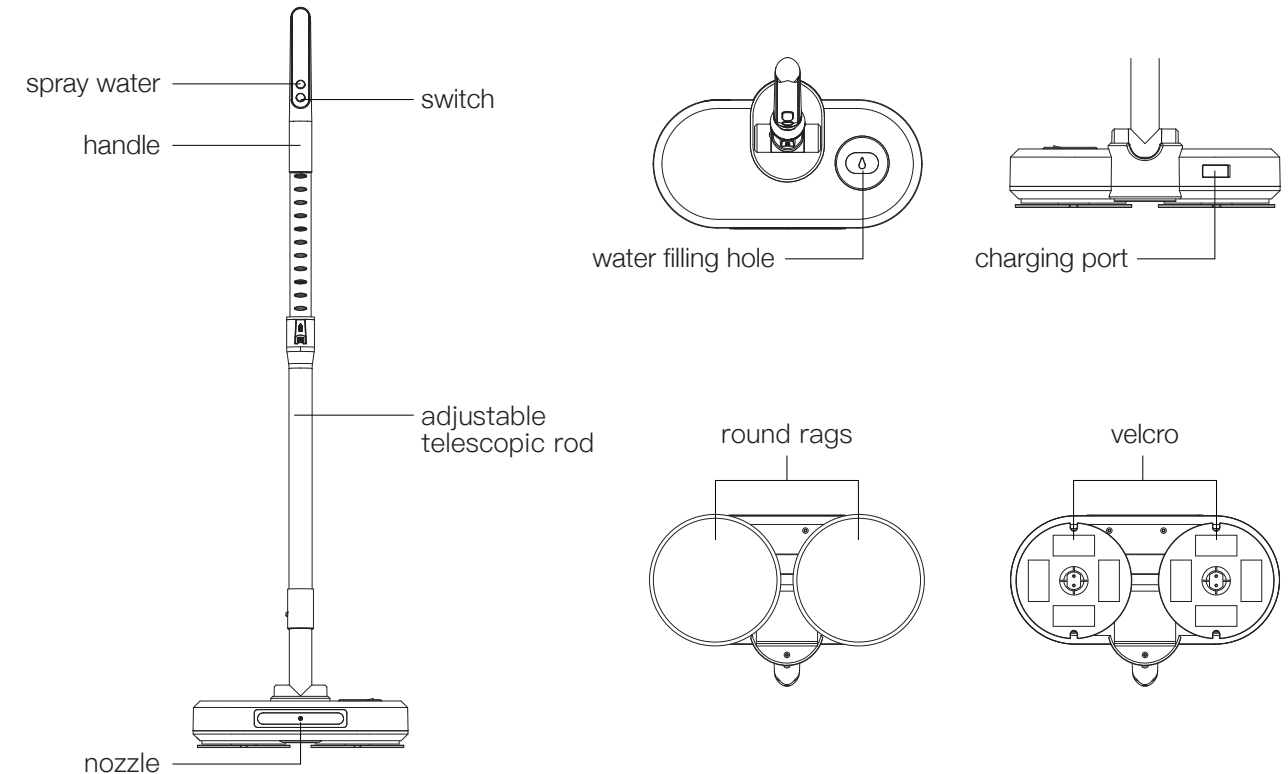
### FG20

This manual mainly instructs you on how to use the equipment properly, please read the manual carefully before use.



• <b>Product description</b>	01
• <b>Parts list / Precautions / Cleaning pads Using</b>	02
• <b>Installation</b>	03
• <b>Instructions</b>	04–05
• <b>Product specification</b>	06
• <b>Fault resolution</b>	07
• <b>The content and name of harmful substances in the product</b>	08
• <b>Security Information</b>	09

## Product description



## Parts list

·Host*1pc	
·Handle*1pc	·Round cleaning rag*2pcs
·Connecting rod*1pc	·Round waxing rag*2pcs
·Adapter*1pc	·Manual*1pc

## Precautions

### 1 Velcro

After being used for many times, the Velcro may adhere to fibers and other debris, causing a drop in viscosity. Please clean it with a soft brush.

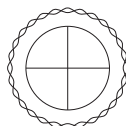
### 2 Rags

After use, remove the rags to clean and air-dry in time, or use the disposable rags. But the disposable rags is eco-friendly material, it will reduce the effect of use if repeatedly reuse.

### 3 Water tank

The tank should be filled with impurity-free liquid and empty the tank after use. If add essential oils, you need to clean the tank several times after use and empty it.

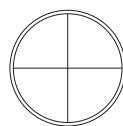
## Cleaning pads



### 1 Unedged cleaning pad

Suitable for floor mopping cleaning

Note: It will be better to add detergent

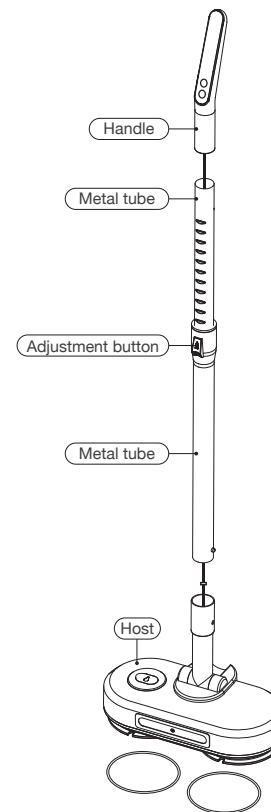


### 2 Waxing cleaning pad

Suitable for floor waxing

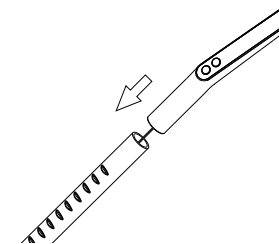
Note: Need to use with waxing oil

## Installation

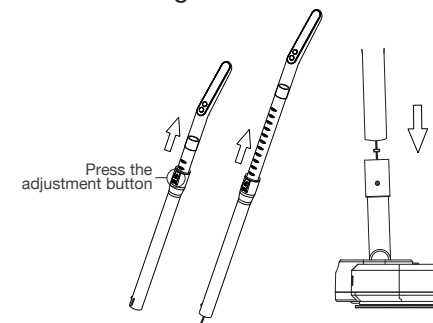


### 1 Press the latch on the metal tube to link the metal tube to the handle.

Note: If the latch does not pop up, turn the metal tube left and right.

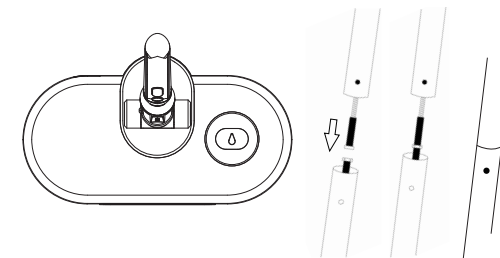


### 3 Press the adjustment button on the metal tube to stretch the tube to the longest, then insert it into the active connecting rod of the host vertically.



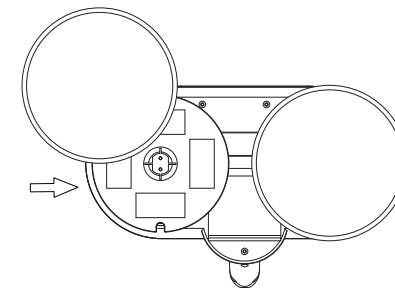
### 2 Place the host on the ground, push the active connecting rod on the host from horizontal to vertical. Connect the power cable in the metal tube.

Note: The active connecting rod is slightly laborious when folded, please operate with confidence.



### 4 Attach the cleaning rags to the bottom of the host.

Note: Please align the center point of the round rags with the center point of the bottom disk.



# Instructions

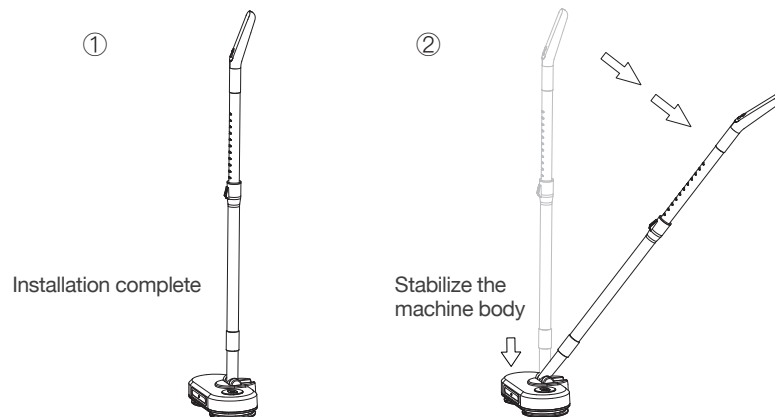
## Before Working

### 1 Add Water

Open the lid of water tank and fixed by hand. Use a measuring cup to add water into the water tank.

### 2 Prepare

After installation, placing the machine vertically on the horizontal floor, and keeping machine body steady to press down the adjusting rod in a state of  $<80^{\circ}$  with ground.




### 3 Power On/Off

Press  shortly to switch on; press  shortly to switch off.

# Instructions

## Using

### 1 Water Spray

Press  to spray water when power on.

### 2 Battery indicator

The 3 indicators shows the power at the condition, 80%-100%; 50%-80%; 10%-50%. when the third indicator flashes, the battery power will run out, please charge it in time.

### 3 Wire winding Situation

Press  1 second after machine working, the machine motor will get into outward rotation in 1 second later. Which is using for wire winding situation betterly.

Note: Alternate use of inward & outward rotation can enhance the cleaning effect.

### 4 Charging

Pulling the rubber out and exposing the charging port completely on the lower right corner of machine. plug charging cable into the machine port. When charging, 0%-50% power, the lights up one by one at the lower voltage; 50%-80% power, the 3rd indicator lights up; 80%-99% power, the 2nd & 3rd indicator lights up and 1st indicator flashing; and all the 3 indicators lights up shows fully charge.

Note: Charging only on the power off condition, and please use original adapter to charge.

### 5 Cleaning pads replacement

lift the machine to tear it off, Put the dirty pads in the washing machine or wash it by hand. wash and dry, and use it repeatedly.

### 6 After cleaning

After cleaning, standing the machine up, and place at the wall corner to avoid falling down.

Product specification

Model	FG20
Name	Electric mop
Net weight	2.3kg
Gross weight	3.27kg
Package size	580 * 280 * 110(mm)
LED spotlight	No
Adaptors input	100-240V 50/60Hz 0.5A
Adaptorr output	18V--0.8A
Power	50w
Switch	Hand-held
Battery capacity	2000mAh
Charging time	3.5-4h
Working time	40-50min
Power indicator	Yes
Water box	300ml
Height	90-118cm, adjustable
Function	dry-wiping,wet-wiping,waxing,decontaminating
Working noise	<50db
Outward and Inward rotation	Yes
Vertical Placement	Yes
Special Function	Motor water cooling design

Fault resolution

When the host operation is abnormal, please refer to the following table to solve the problem

The host does not start:

- 1.Low battery, please charge before use.
- 2.Whether it is in charging state, it cannot be turned on during charging.

The nozzle does not spray water:

- 1.Check whether there is water in the tank.
- 2.This product must be started before spraying water.

It feels heavy when mopping:

- 1.Check whether the power enough.
- 2.There is too much water on the rags.

Water stain on the floor:

- 1.Excessive water spray.
- 2.Wipe by day rags.

# The content and name of harmful substances in the product

Parts name	Harmful Substance					
	Pb	Hg	Cd	Cr(VI)	PBB	PBDE
Circuit board	X	○	○	○	○	○
Metallic parts	○	○	X	○	○	○
Case	○	○	○	○	○	○
Rechargeable Battery	X	○	○	○	○	○

This form is based on the provisions of SJ/T11364.

○: Indicates that the content of the hazardous substance in all homogeneous materials of the component is below the limit requirements specified in GB/T 26572.

X: Indicates that the content of the hazardous substance in at least one of the homogeneous materials of the component exceeds the limit specified in GB/T 26572.

(All parts marked with X in the table are in compliance with the EU RoHS directive or cannot be replaced due to global technical limitations)

(This table shows that these hazardous substances are present in our products, not all of the above components)

The environmental protection use period of the rechargeable battery used of the product is 5 years

# Security Information

## Use restrictions

- 1.Before use, you need to remove large-size garbage. This product has no sweeping and dust collection function.
- 2.This product is not waterproof. It can not be water shower and can not clean Waterlogged or thick floor.
- 3.Avoid jamming of the moving parts of the robot when wiping small spaces. If this happens, first close the product and then remove it.
- 4.Do not increase the load on the host.
- 5.Please clean the appearance of the product in the off state.
- 6.Do not stress the metal rod or shoulder the product.
- 7.Carefully wax the wooden floor and pay attention to safety.
- 8.Please use this product according to the instruction of the manual. Any loss or injury caused by improper use will be borne by the user.

## Battery and charging

- 1.Do not use any third-party battery, power adapter.
- 2.Do not dismantle, repair, modify battery or power adapter.
- 3.Do not place the power adapter near a heat source.
- 4.Do not wipe the power adapter with a damp cloth or wet hands.
- 5.Do not throw away discarded batteries at random. Handle them with professional recycling agencies.
- 6.If the power cord of the adapter power is broken, stop using it immediately and contact customer service.
- 7.If you need to transport the product, please make sure the host is turned off and it is recommended to use the original packaging.
- 8.If you do not use this product for a long time, please turn off the main unit after it is fully charged and place it in a cool and dry place. Charge it at least once every three months to avoid overdischarge.