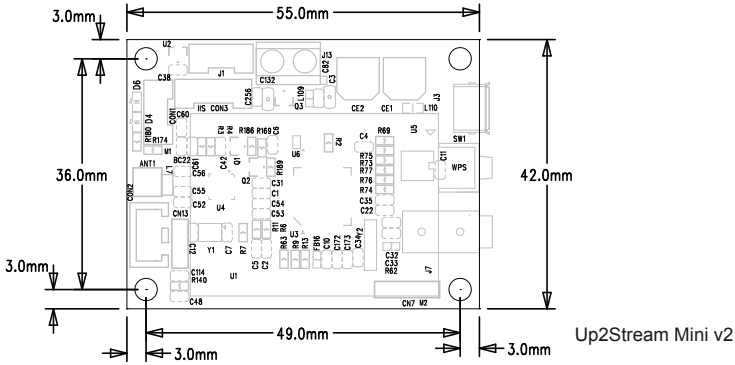


# Up2Stream Mini v2 User Manual

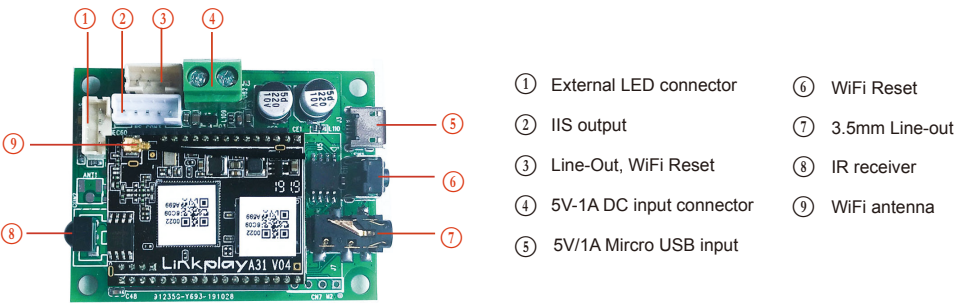
## 1. Introduction

Up2Stream Mini v2 is a WiFi preamplifier board that can be installed in your existing regular speakers or amplifier to make them wireless enabled, and it is also a all-in-one solution for DIYers to make their customized wireless audio player. After connecting the device to your home network, with our 4STREAM APP, you can play music from your home NAS, cell phone memory or from online streaming services like Spotify, Deezer, Tidal, Qobuz and so on. The wireless multiroom audio system can play the same music to each room in sync or play different music to different rooms.

## 2. Dimensions



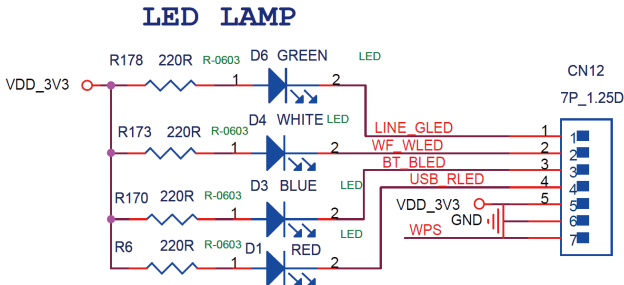
## 3. Interface



**LED:** White LED showing system state. Fast blinking for system booting, slow blinking for connecting to network, and lighting on for normal.  
**WiFi Reset:** Short press to reset the device WiFi, long press to restore the device to factory setting (only works in WiFi mode).

## Installation notes

- ① **PH2.0-4P:** LED connector.  
LEDs are common-anode connected, to add external LED, you should connect 3.3V to a current limit resistor and then to a LED and then to the pin. (reference the diagram below)
- ② **IIS:PH2.0-5P:** DOUT,BCLK,LRCK,MCLK,GND.  
This is the IIS output port, the BCLK is 2.8MHz, the LRCK is 44.1kHz, the MCLK is 11.288MHz, the DOUT following the standard IIS data format and have 16 bits depth. The system is running in master mode, you should make sure the IIS port of connected device is running in slave mode.
- ③ **PH2.0-4P:** ROUT, GND, LOUT, WPS.  
For analog output to amplifier board, it has same signal with the 3.5mm Aux jack.  
WPS pin is used for external WiFi reset button, you should connect this pin to a switch button and then to GND, to implement function that the pin will short to GND when pressed button.



## 4. Specification

Connectivity	Wireless network	EEE802.11 b/g/n 2.4G
	USB Host	Play USB music
Power Input *	5V-1A/2 pin connector	
	5V-1A micro USB input	
Audio output	Analog 3.5mm/4 pin connector	
	Digital IIS	
Frequency response	20Hz to 20kHz	

SNR	91dB
THD	0.03%
Music Format	FLAC/MP3/AAC/AAC+/ALAC/APE/WAV
Decoding	Up to 24bit/192kHz
Protocols	AirPlay, DLNA, UPnP, Spotify Connect, Qplay
Dimensions	55*42mm

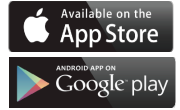
\* Warning: Up2Stream Mini v2 must use 5V-1A DC input, higher power supply may damage the board.

## 5. How To Use

### 5.1 App download

Download the 4STREAM application from App Store for iOS based devices and Google Play Store for Android based devices.

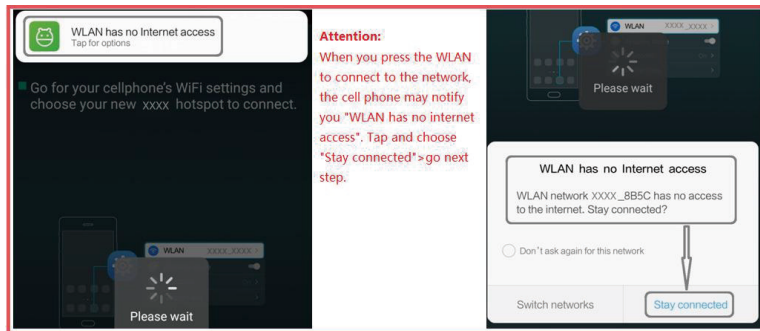
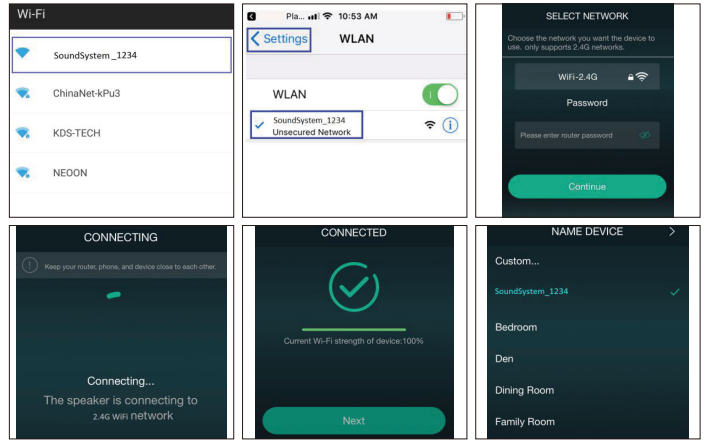
The application supports English, Spanish, French, German, Italian, Portuguese, Korean, Simplified Chinese, Traditional Chinese and Japanese



### 5.2 Connection via app

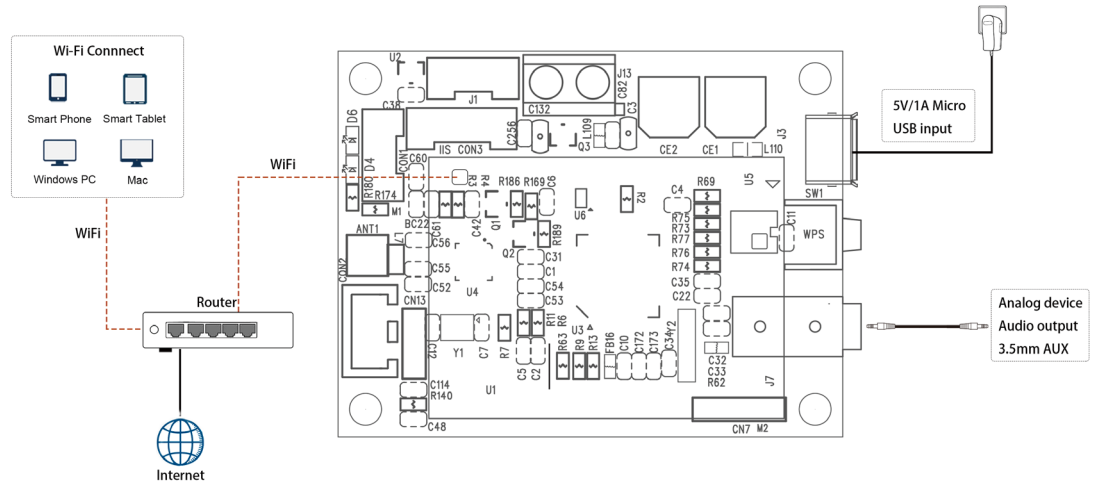
1. Power the device.
2. Connect your mobile devices to your network.
3. Go for mobile device WLAN settings> Connect mobile device to hotspot SoundSystem\_xxxx you will see a WiFi logo (short press the reset button if the hotspot is not found)
4. Open the 4STREAM application, follow the guides
5. Choose the 2.4G network(only 2.4G network will appear), enter router password>wait for the device to be configured.

\* For multiple units connecting to same router, router password will be saved .



\*Attention for Android users  
Different brand mobile phones may ask you to allow to use SoundSystem WiFi network ,please choose yes, if not ,you may not able to set up successfully .

## 6. Connection Diagram



Scan the QR codes below for more



Complete User Manual



www.arylic.com



4STREAM App



Facebook: arylicme



YouTube: Arylic

Support: info@arylic.com