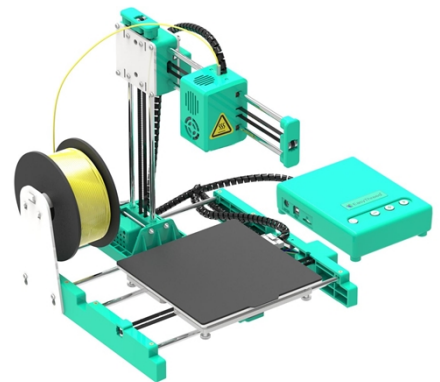




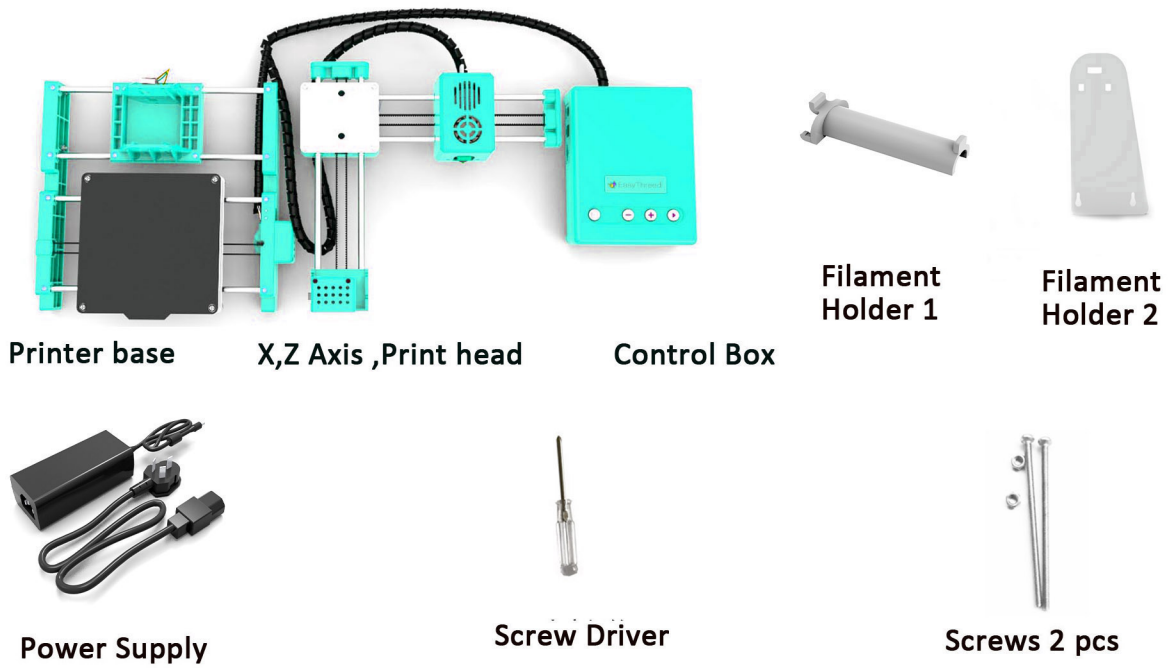
# Easythread X3 3D Printer

## Install Manual

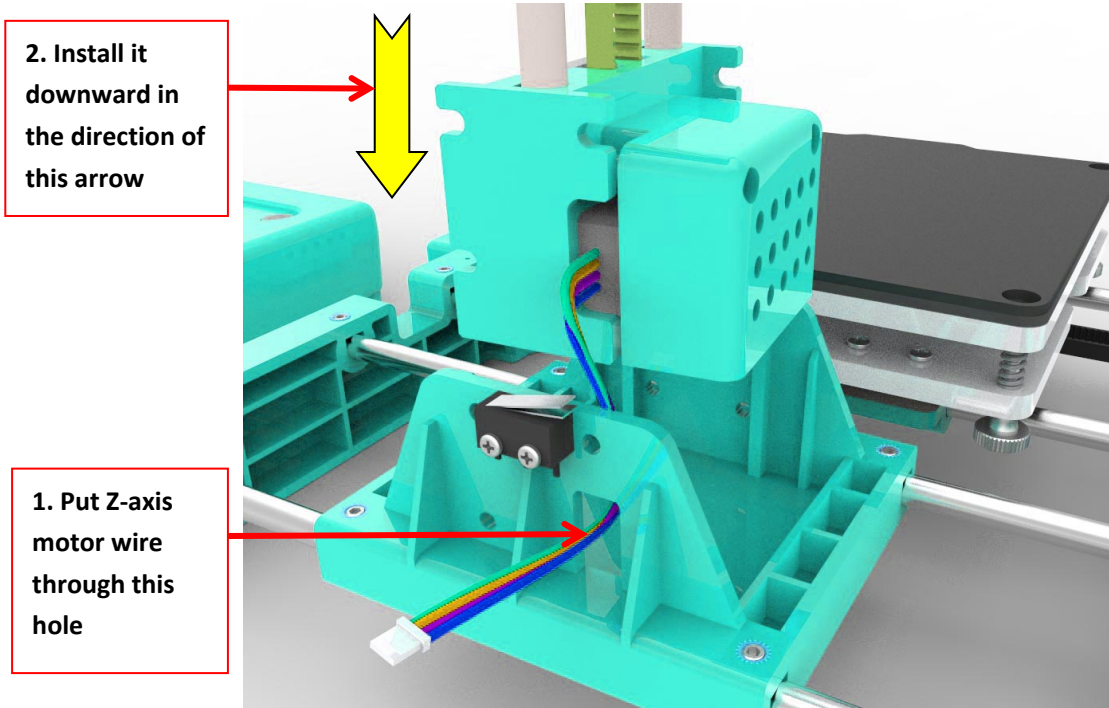
- ★ This manual is written in accordance with EasyThread X3 3D printer.
- ★ Printer upgrades and equipment models are slightly different, is a normal phenomenon, based on the actual products received.
- ★ User's manual inside TF card.



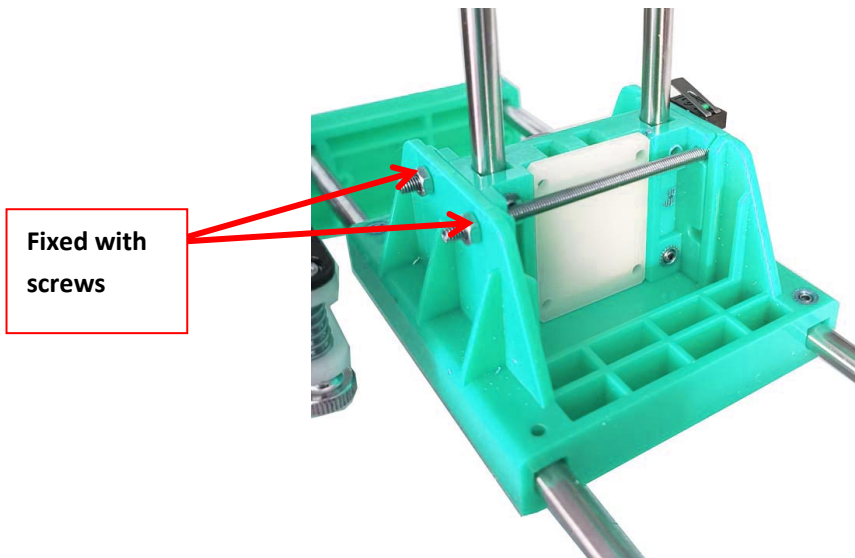
Parts List: Take out parts from package , check if all parts have as listed below .



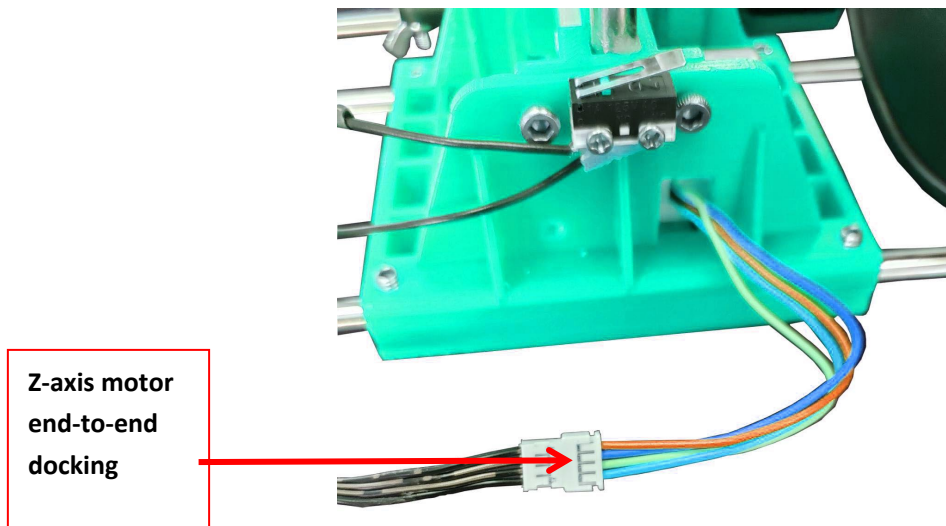
1. Install the XZ Axis set to the Printer Base.



2. After insert the XZ Axis, Fixed with 2 screws.

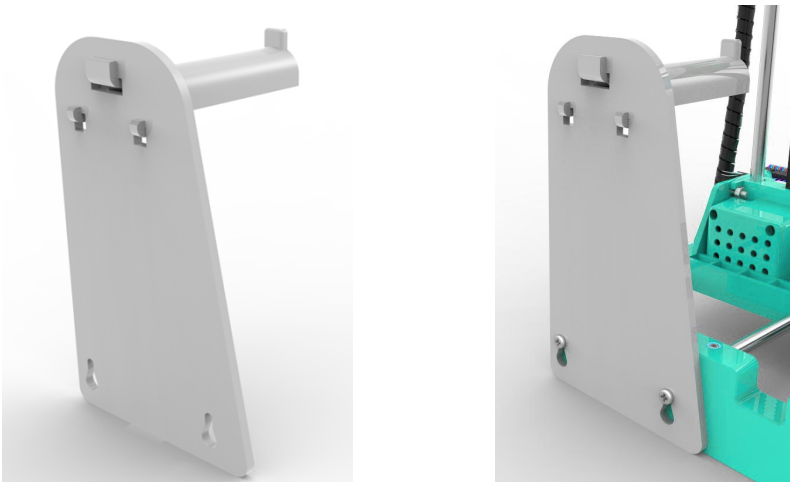


3. Connect the Z-axis motor line to the output line of the printer control box as shown in the figure below..



4.Install the Filament Holder as below.

**Important Notice: This filament holder can only hang on 250g weight filament.**



connect the power and start the 3D printing journey.◦

ShenZhen EasyThreed Technology CO.,LTD

<http://www.easythreed.com>

[info@easythreed.com](mailto:info@easythreed.com)