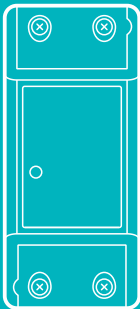


BASIC-2.4G

产品使用说明书/User Manual

V1.1



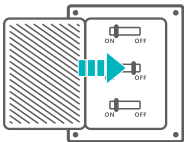
2.4G智能开关模块/2.4G Smart Switch

中文-----1-7

English-----8-15

安装说明

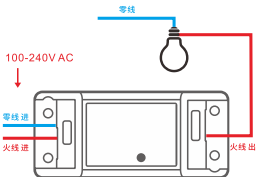
1 断电



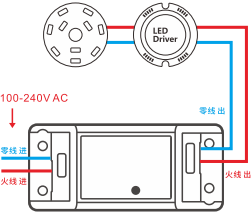
⚠ 设备安装、故障维修请由专业资质电工操作，以免发生触电危险！

2 接线

单火线输出接线示意



吸顶灯接线示意



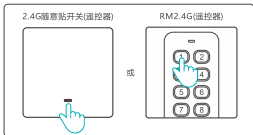
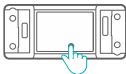
ⓘ 确保零火线接入无误后，再进行上电。

设备现支持学习的RM2.4G遥控器

型 号	SA-025-RM2.4G-1C SA-025-RM2.4G-2C SA-025-RM2.4G-3C RM2.4G
-----	--

ⓘ 后续持续增加支持的RM2.4G遥控器，同时支持其它品牌的RM2.4G遥控器，具体以产品实际为准。

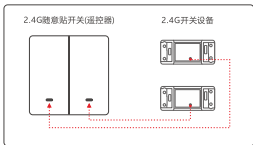
设备与RM2.4G遥控器的配对方法

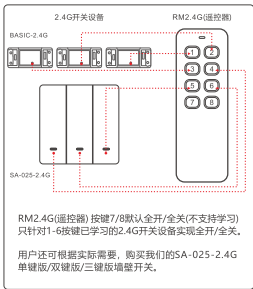


长按设备配对按钮3秒直到开关指示灯“闪烁一下”，松开。然后短按遥控器上需要学习的按键，设备开关指示灯再次“闪烁一下”，即配对完成。

① 遥控器的详细使用方法，请查看遥控器的说明书。

① 多键值RM2.4G遥控器可学习多个开关设备。





设备与易微联APP的配对方法

1 下载APP

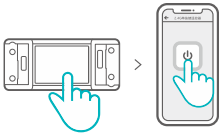


2 添加APP端2.4G遥控器



点击 "+" 选择 "2.4G遥控器"，再选择 "单按键" 保存即可。

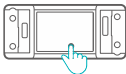
3 配对APP端2.4G遥控器



长按开关设备配对按钮3秒直到开关指示灯“闪烁一下”，松开。再点击APP端遥控器的按键，开关指示灯再次“闪烁一下”，即配对完成。

❗ 开关设备最多可添加4个RM2.4G遥控器（APP端遥控器+RM2.4G遥控器），超过4个则会自动覆盖第一个遥控器数据。

清除RM2.4G遥控器的方法

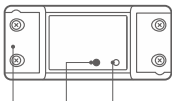


长按设备配对按钮5秒直到开关指示灯“闪烁两下”此时该设备所学习的所有遥控器已全部清除（APP端遥控器+RM2.4G遥控器），

产品参数

型号	BASIC-2.4G
输入	100-240V AC 50/60Hz 10A Max
输出	100-240V AC 50/60Hz 10A Max
支持平台	(Android 4.1 & iOS 9.0) 或者更高版本
RM	2.4G
遥控距离	大于40米(空旷距离)
外壳材料	ABS
产品规格	88x39x24mm

产品介绍



压线盖

手动开关
配对按钮

2.4G信号指示灯(绿色)
开关指示灯(红色)

产品特点

本设备是一款2.4G智能双控开关，可通过手机APP或本地2.4G遥控器对设备进行开/关，还可在手机APP端设置智能延时等功能。



APP控制



智能延时



RM2.4G控制



扫码或搜索“微联e站”关注微联e站公众号获取更多帮助。

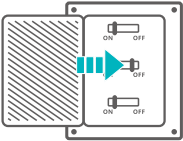
易微联已经打通主流AI语音平台。如果希望用户快速确认产品与哪些平台/智能音箱兼容，厂商可额外印刷易微联Logo的“Works with AI平台”的海报版本，并连同产品说明书内置于包装之内。




❗ 采用易微联平台的智能产品在使用AI语音平台Logo之前需获得相应的平台认证。如果厂商将此版本印刷于包装上，请根据产品的实际认证情况进行删减。

Installation instructions

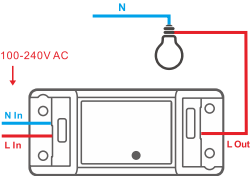
1 Power off



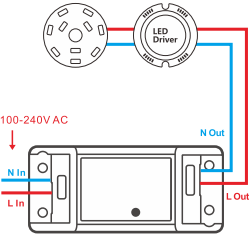
 To avoid electric shocks, please consult the dealer or a qualified professional for help when installing and repairing.

2 Wiring instruction

Single live wire wiring instruction



Ceiling lamp wiring instruction



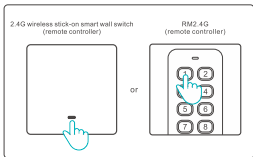
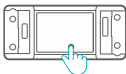
⚠ Make sure correct wiring before powering the device on.

The device supports learning RM2.4G remote controllers

Models	SA-025-RM2.4G-1C SA-025-RM2.4G-2C SA-025-RM2.4G-3C RM2.4G
--------	--

⚠ The number of supported RM2.4G remote controllers will continue to be increased. This device can also work with other RM2.4G remote controllers. Detailed information is in accordance with the final product.

Pairing with RM2.4G remote controller



Long press the pairing button on the device for 3s until the LED indicator "flashes once" and release. Then short press the button that you want to learn on the remote controller, and the LED indicator "flashes once again" means the pairing is successful.

- ⓘ Please refer to the user manual of remote controllers for detailed instructions and use.
- ⓘ The RM2.4G remote controller can learn multiple devices.

2.4G wireless stick-on smart wall switch
(remote controller)



2.4G smart switch



2.4G smart switch

RM2.4G (remote controller)

BASIC-2.4G



SA-025-2.4G

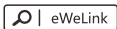


The "7" and "8" button on RM2.4G (remote controller) are only available for simultaneously turning on/off all 2.4G smart switches that have been learned 1-6 button (learning is not supported).

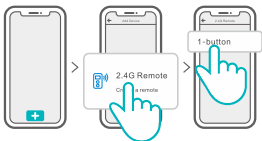
You can also purchase our SA-025-2.4G 2.4G smart wall switch (1/2/3 gang single live wire) as needed.

Pairing with eWeLink APP

1 Download APP



2 Add the 2.4G remote controller on eWeLink APP.



Tap “+” and select “2.4G Remote”, then select “1-button”.

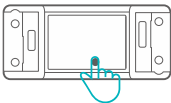
3 Pairing with APP



Long press the pairing button on the device for 3s until the LED indicator "flashes once" and release. Then tap the remote controller button on APP, and the LED indicator "flashes once again" means that the pairing is successful.

- ① The device can add 4 2.4G remote controllers at most (include APP button and RM2.4G remote controller), and the fifth remote controller data will automatically cover the first one.

Clearing RM2.4G remote controller

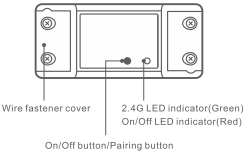


Long press the pairing button on the device for 5s until the LED indicator "flashes twice" and release, then all paired remote controllers (include APP button and RM2.4G remote controller) are cleared successfully.

Specifications

Model	BASIC-2.4G
Input	100-240V AC 50/60Hz 10A Max
Output	100-240V AC 50/60Hz 10A Max
Operating Systems	(Android 4.1 & iOS 9.0) or higher
RM	2.4G
Control distance	Over 40M (Open space)
Material	ABS
Dimension	88x39x24mm

Product Introduction



Features

This is a 2.4G two-way control smart switch that allows you to remotely turn on/off connected devices through eWeLink APP or a 2.4G remote controller and set countdowns on APP to make devices automatically turn on/off.



APP Control



Countdown



RM2.4G Control

eWeLink has integrated with mainstream AI platforms. To ensure users can know quickly which platforms/smart speakers are compatible with products, manufacturers can print the poster version with "Works with AI" of eWeLink logo and attach it in the package with the user manual.



ⓘ Smart products supporting eWeLink APP need get the certification of the corresponding platform before using the logo of AI voice platforms. Please refer to the product certification to make a deletion if manufacturers use the version on the package.