



Graphic production tutorial (图文制作教程)

祝所有买家制作成功，且学到相关的知识，让学习的价值超出套件的价值。如以上资料有不明白之处，请旺旺在线咨询，感谢您的支持！

Best wishes to all buyers for a successful production and learning of the relevant knowledge to make the value of learning more than the value of the kit. If the above information is not clear, please want want online consultation, thank you for your support!

The finished product figure (成品图) :

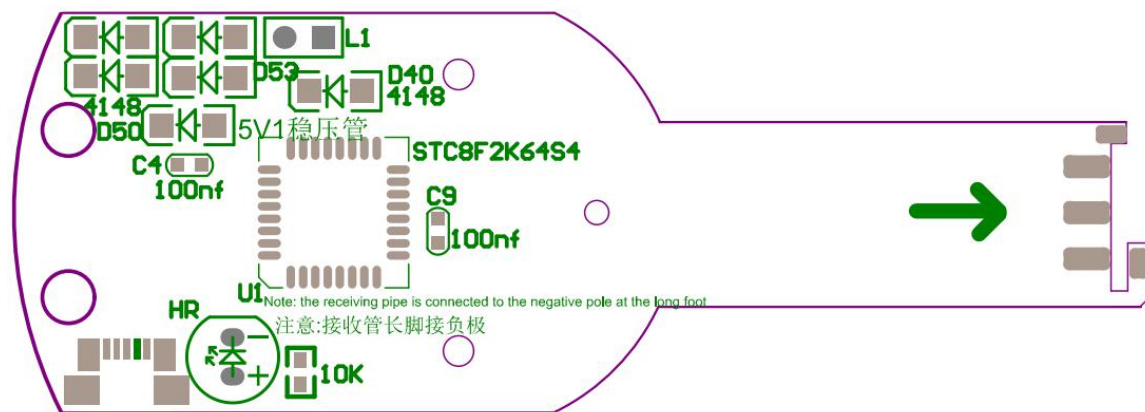


[illegible]



Production steps (制作步骤) :

1、Welded motherboard finished products (焊接主板成品)

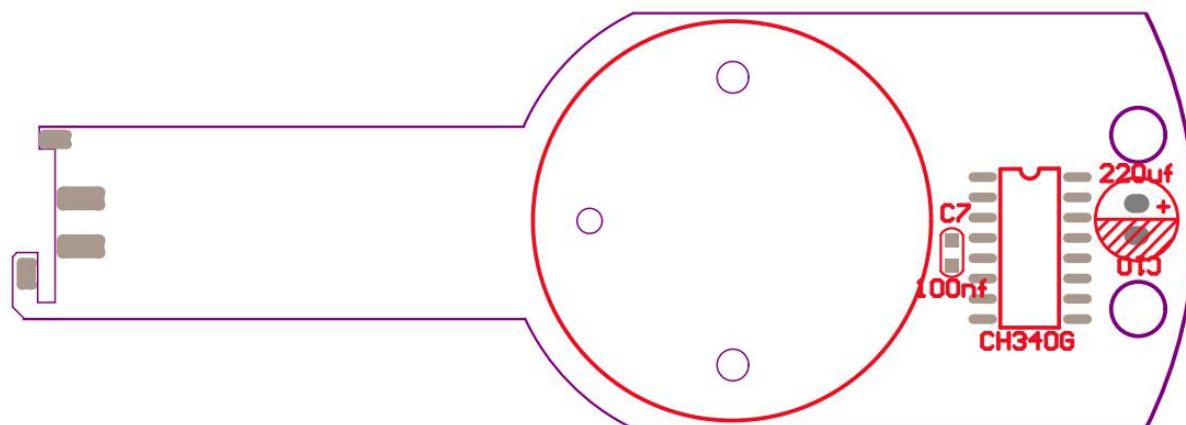


侧面板对准后固定，尽量垂直主板焊接

The side plate should be fixed after alignment and welded vertically to the main board as far as possible

接收管长脚接负极

The receiving pipe is connected to the negative pole at the long foot



配重螺丝
Screw of balancing

彼此间用双面胶粘好防止脱落
Use double-sided adhesive tape between each
other to prevent falling off



红色线接电机红点的一边

The red wire is connected to the red dot side of the motor

注意线序和座子方向

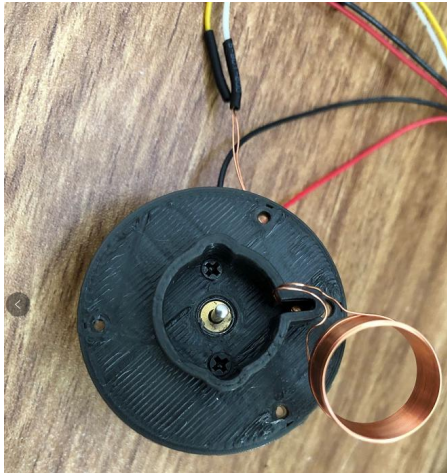
Note the line order and the direction of the subunits



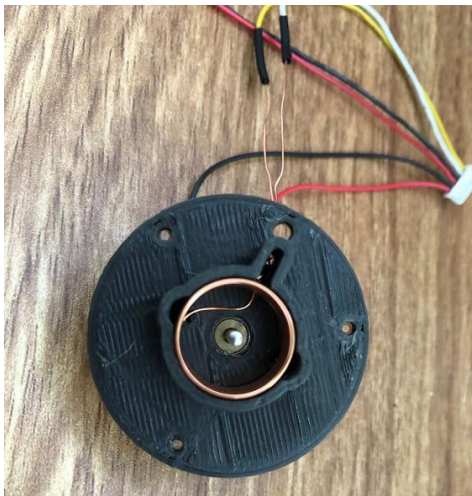
The coil does not have positive or negative. Note that after passing through the black accessories as shown in the figure, use the heat-shrinkable tube to cover the welding



3、M2*4 Fix the motor with flat head screws (M2*4 平头螺丝固定电机)



4、Fix the large coil and press hard into it (固定大线圈，用力压进去)



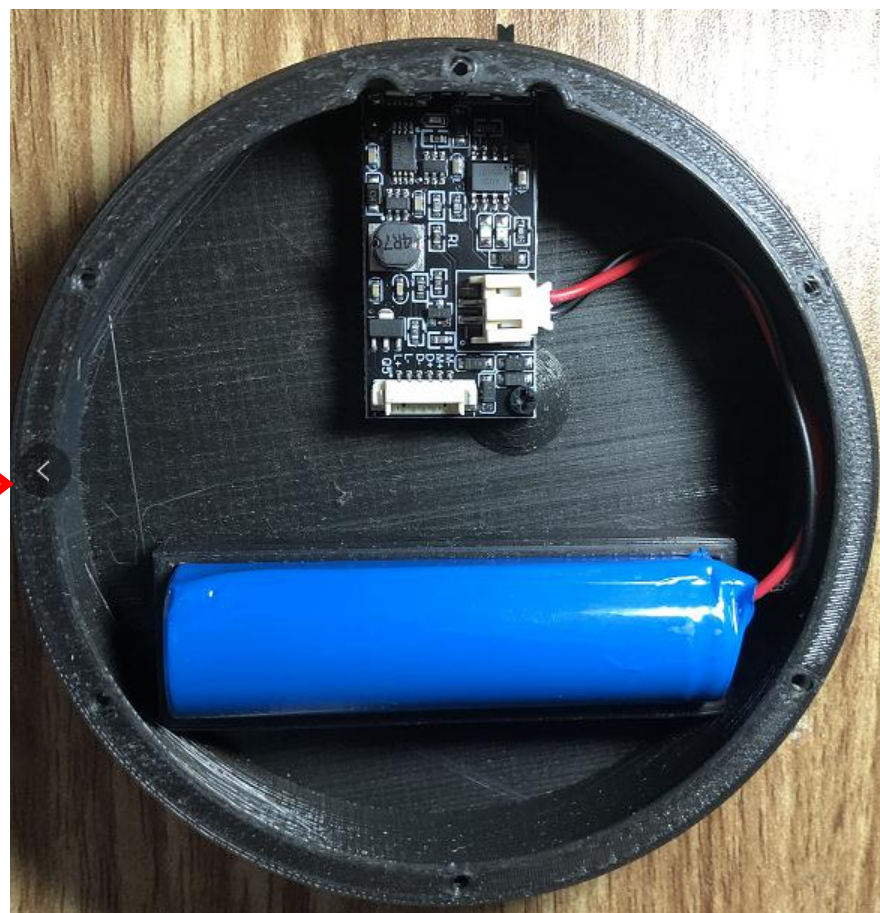


5、M2*6 Tapping screw 3 fixed fittings (自攻螺丝 3 颗固定配件)



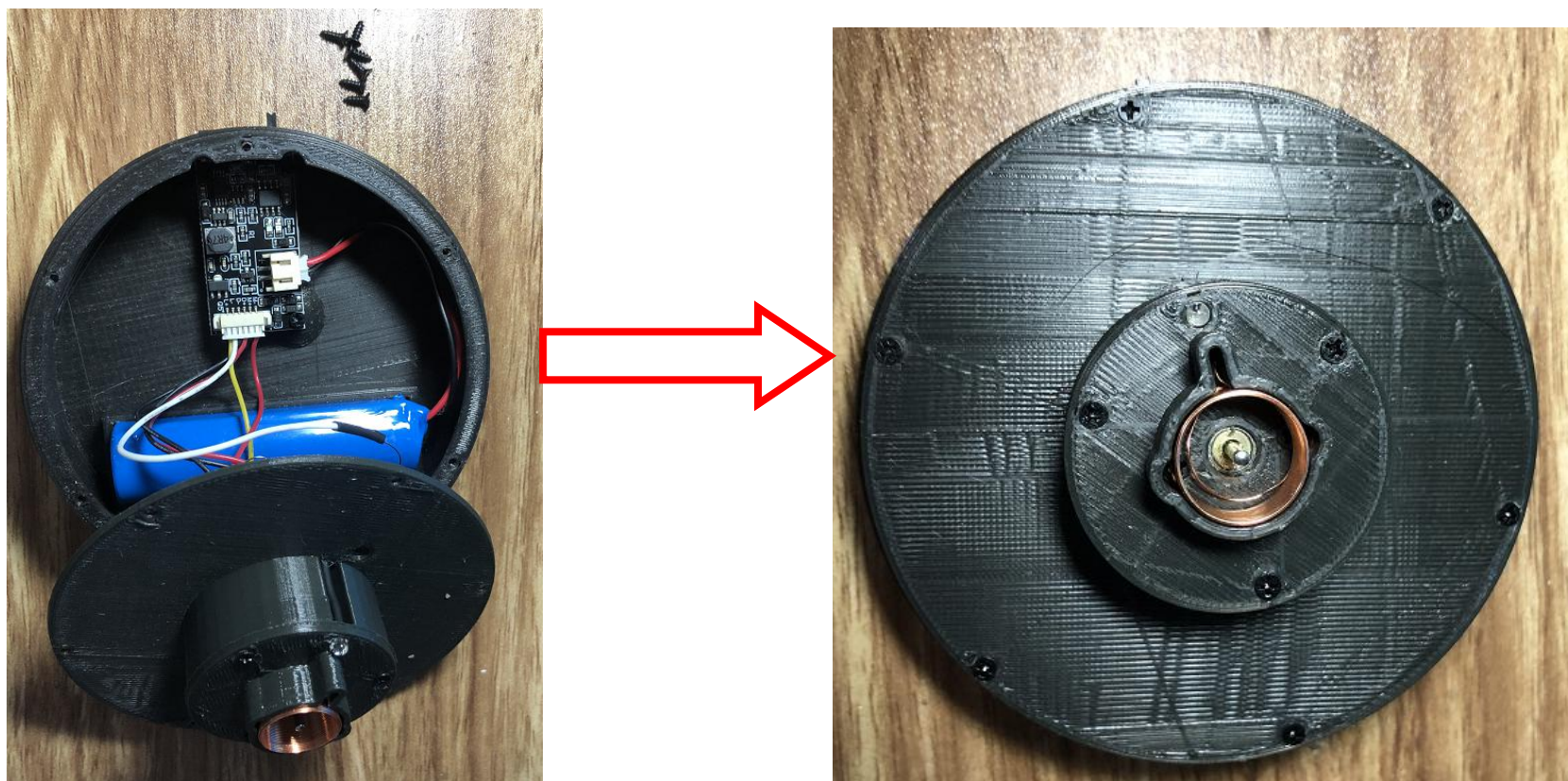


6、M2*6 3 self-tapping screws are equipped with the base and fixed batteries. The batteries are directly inserted into the 2P wire to the power supply plate (M2*6 自攻螺丝 3 颗装备底座以及固定电池，电池直接卡进去插好 2P 线到供电板)





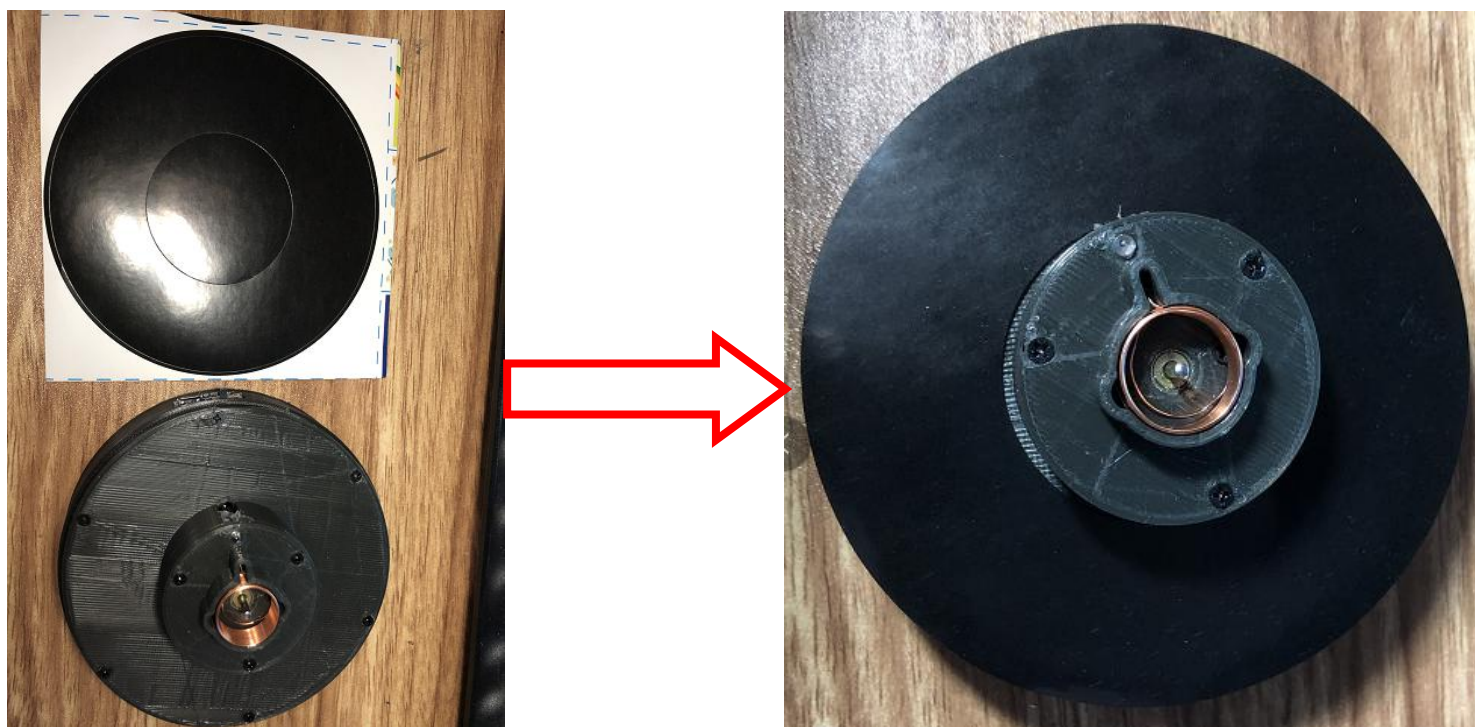
7、Connect the 6P wire and fix the base with 6 M2*6 self-tapping screws (接好 6P 线并且用 6 颗 M2*6 自攻螺丝螺丝固定底座)

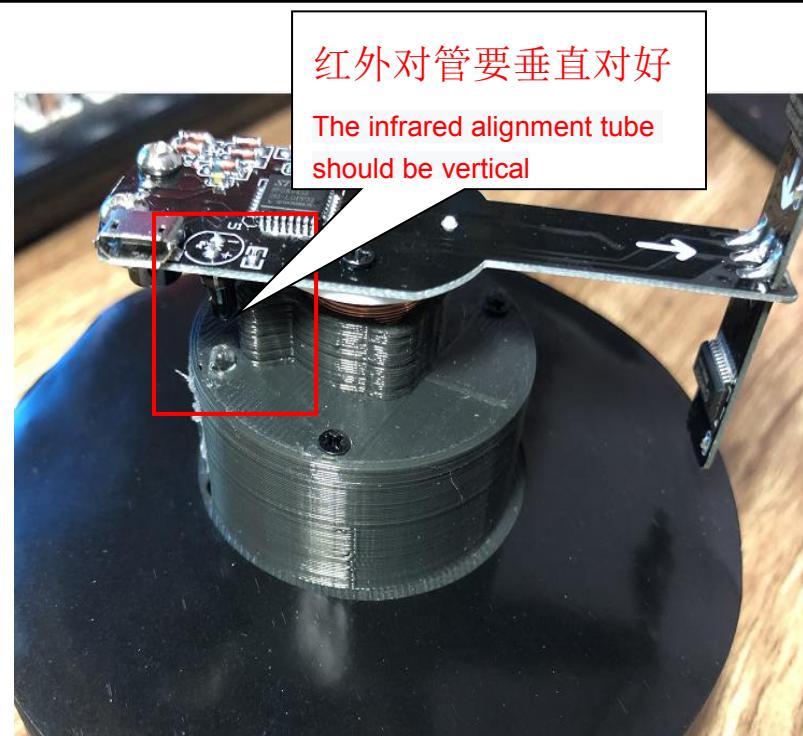




7、Please test whether the rotating LED can display the text normally before the sticker. If not, please see the debugging instructions. Only if the text can be displayed normally can the sticker be carried out.

贴纸前请先测试旋转 LED 是否可以正常显示文字，如果不能，请看调试说明。如果可以正常显示文字才能进行贴纸。





8、Finally, cover the cylindrical transparent tube, which will be loose between the assembly and the transparent tube due to errors. Please use hot melt adhesive or double-sided adhesive to reinforce the tube, but it cannot be completely fixed. To change the word, open the transparent tube, which can be a little tight. (最后盖上圆柱形透明管，由于误差问题会导致装配件与透明管之间比较松，请用热熔胶或者双面胶加固但是不能完全固定死，改字是需要打开这个透明管的，有点紧就可以了，最后盖上盖子，盖子松动也用同个办法处理。)

