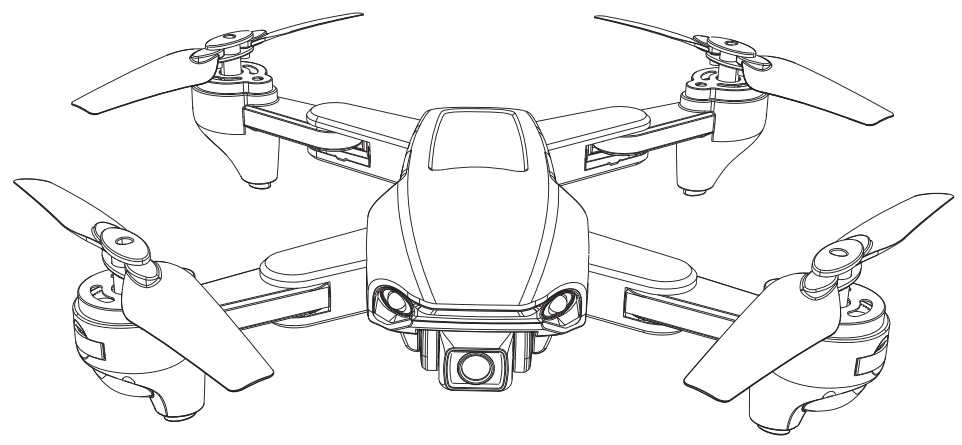


GPS 4-AXIS AEROCRAFT INSTRUCTION MANUAL



PLEASE READ COMPLETELY THE MANUAL AND KEEP IT WELL FOR USE REFERENCE.

INTRODUCTION TO GPS FIXED POINT

- 1.After the frequency matching of the aircraft is successful, it will take 1-3 minutes in the open and unobstructed environment, and the front and rear lights of the aircraft will be on for a long time, it means the fixed point is successful.
- 2.The front and rear lights of the aircraft flash back and forth, it means the current position receives signal interference and needs to be replaced the environment.
- 3.Press the GPS Power Switch button, and you can hear a "DI" sound from remote control,it means enter the indoor mode.

ONE KEY RETURN

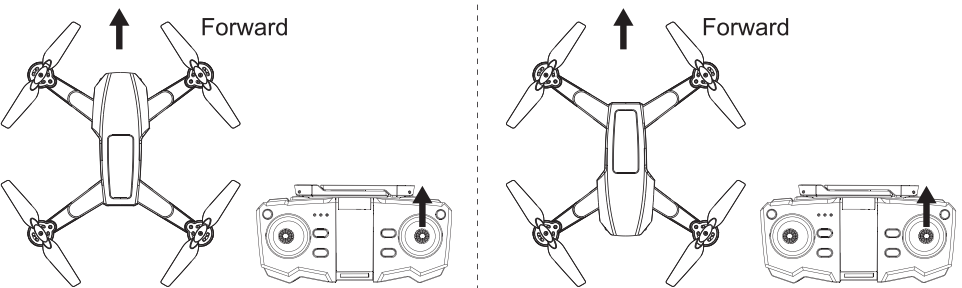
①Proactive return: when you press one key return button,you will hear the "DI" "DI" sound from the remote control and the aircraft will start to return to the take-off point for landing. At the end of one key return, the remote control will automatically disarm the alarm after about 10 seconds.

②Automatic return: when the aircraft detects the first level low voltage, the front and rear lights of the aircraft will flash slowly, and the aircraft will automatically return to a height of about 20 meters within the radius of the take-off point and the altitude will automatically land on the ground; at this time, the aircraft can fly for about 2-4 minutes. When the secondary low voltage is detected and the aircraft is less than 10 meters high, it will automatically rise 10-20 meters high, return to the take-off point and automatically land on the ground and stop flying.

HEADLESS MODE

1.When pressing the headless mode button, the forward direction of the remote control is the front of the course, and you hear "DI" "DI" sound from remote control at the same time, the indicator light of the aircraft flashes slowly, and the headless mode is started.

2.Exit the headless mode: Press the headless mode button again and hear "DI" "DI" sound. The indicator light is on and the headless mode is exited.



WARNING

In order to ensure the electromagnetic environment requirements for aeronautical radio navigation stations, it is forbidden to use various remote control and drones within 10 km on both ends of the airport runway center line, 20 km from both ends of the runway, on civil aviation's air routes or air line. During the period of the management of radio operation orders by the relevant state departments, the various remote control and drones shall be stopped as required.

DISCLAIMER AND SAFETY INSTRUCTIONS

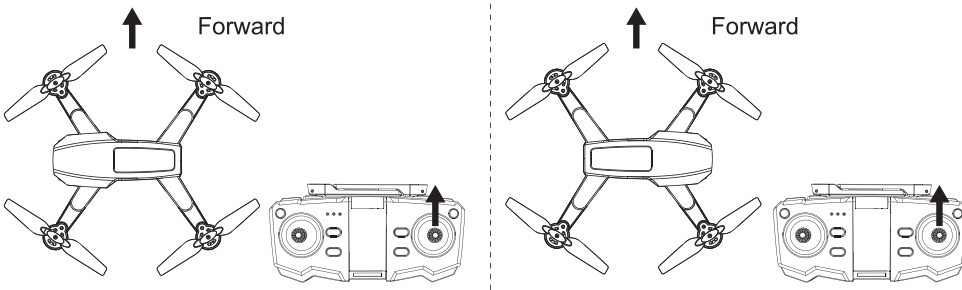
In order to make it easier and safer to use this product, please read all the contents of this manual carefully before using this product, and save this manual for future reference.

DISCLAIMER

- 1.In order to protect the legitimate rights and interests of users, please carefully read the instructions, disclaimers and safety instructions provided with this product before using this product.
- 2.This product is not suitable for people under the age of 14. People under the age of 14 need to use it under the supervision and guidance of adults with aircraft flight experience.
- 3.Once you start using the product, you are deemed to have read, understood, recognized and accepted all terms and contents of the product's instructions, disclaimers and safety instructions.
- 4.In the process of using this product, please be sure to strictly abide by and implement the requirements including but not limited to the instructions and safety instructions. For all personal injuries, accidents, property losses, legal disputes and all other adverse time resulting in conflict of interest caused by using behaviors or irresistible factors in violation of safety instructions, the user shall bear relevant responsibilities and losses, and the company will not bear any responsibilities.
- 5.The company will not be liable for any direct or indirect violation of laws and regulations caused by the user's use of the product.

SAFETY INSTRUCTIONS

- 1.This product is not suitable for people under the age of 14 and other people without full civil capacity.
- 2.The product has high-speed rotating blades and powerful flight power, and has certain danger in operation. Do not approach or touch the product while it is working.
- 3.When using this product, please keep away from dangerous environment such as airport, railway, highway, high building, electric wire, etc.
- 4.When using this product, please keep away from the high electromagnetic interference environment such as mobile base station, high-power transmitting equipment, etc.
- 5.When using this product, please keep away from all kinds of manned aircraft.
- 6.Please do not use this product in rain, thunder, dust, fog, snow, strong wind, low temperature and other harsh environment
- 7.This product is non waterproof design, please do not operate this product near the water area.
- 8.When operating this product, please always keep a safe distance of about 10 meters between the aircraft and people or animals.
- 9.Always keep the aircraft flying within the operator's visual range.
- 10.Do not hover or fly over the crowd, please don't take pleasure in frightening others
- 11.Do not operate this product near the place where children play.
- 12.Do not use this product to chase vehicles or affect the normal operation of vehicles.
- 13.Do not turn off the aircraft when the product is flying in the air without emergency.
- 14.This product can not be used under the circumstances of drinking, fatigue, taking drugs, physical discomfort, etc.
- 15.Please check the product before each use, including but not limited to the firmness of parts, cracks and wear of engine body and propeller. Battery capacity, validity of indicator, etc. In case of any abnormality, please stop using and replace the corresponding accessories immediately.
- 16.The aircraft in abnormal working condition may have accidents. Do not start the blade or barely fly.
- 17.Do not attempt to block any moving parts in the operation of this product.
- 18.Do not modify this product or use it for non original design purposes.
- 19.Do not operate this product in the no fly zone of laws and regulations.



As shown in the figure, in the headless mode, no matter where the aircraft is in the front, press the headless mode of the remote control, the front of the aircraft will automatically lock the course order to locate the front, rear, left and right directions of the aircraft without the need to locate the aircraft itself.

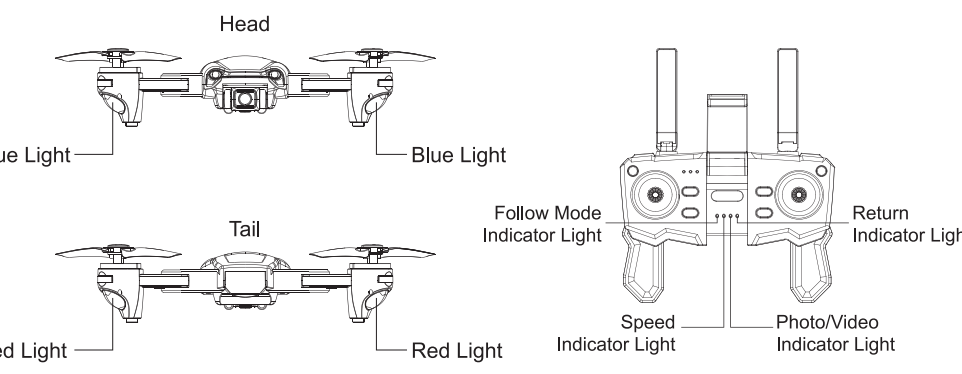
PHOTO AND VIDEO

- 1.Short press the photo button on the remote control, or click the photo icon on the app interface to take photos.
- 2.Long press the video button on the remote control, or click the video icon on the app interface to record.Press the key again or click the icon to stop recording, and the video will be saved on the app and mobile phone.

SPEED

Move the high and low speed switch buttons on the remote control to control the flight speed. (One sound of "DI" is slow speed, and two sounds of "DI" "DI" are high speed. Power on is slow speed by default)

LIGHT



20.Due to the variety of materials used in the aircraft, high temperature will damage the internal structure of the aircraft, and lead to unpredictable consequences. Therefore, please keep the aircraft away from the heat source and avoid exposing to direct sunlight for a long time.

- 21.Please follow the product instruction manual.
- 22.Please use original accessories for maintenance and replacement.
- 23.Please make sure that other operator understands and abides by the safety instructions.
- 24.Do not mix different types of batteries.
- 25.Do not use expanded, leaking or damaged batteries.
- 26.Keep away from inflammables when charging the battery (such as blankets, solid wood furniture, wooden boards, etc.)
- 27.Please use the original charging line. Do not use other brands or damaged charging lines.
- 28.Please keep a safe distance from the high-speed rotating blades to avoid the risk of strangulation and cutting.
- 29.Do not use the aircraft close to the ear! Misuse may cause hearing loss.
- 30.Aircraft should be used as far away from other electrical equipment and magnetic objects as possible, which may cause mutual interference.
- 31.Please do not short circuit or squeeze the battery to avoid explosion.
- 32.The motor is a hot part. Please do not touch it to avoid scalding.

CHARGING PRECAUTIONS

- 1.There are certain risks in using lithium battery, which may cause significant losses to people and property. Please use it carefully and bear all relevant responsibilities by yourself.
- 2.If the battery leaks, avoid contact with skin and eyes. If you touch the skin, please wash it immediately with soap and clear water. In case of contact with eyes, wash immediately with plenty of water and see the doctor immediately.
- 3.If the charger emits odor, noise or smoke, please unplug the power supply immediately.

CHARGING INSTRUCTIONS

- 1.Please use the original special charger for charging. Do not use damaged or other brand chargers.
- 2.Do not charge batteries that are swollen, leaking or damaged.
- 3.Do not overcharge the battery. Once the battery is fully charged, please dial out the charger.
- 4.Do not charge on the surface near inflammables (blankets, wood floor, solid wood furniture, etc.) or conductive objects. Please keep the battery in the view range when charging.
- 5.Do not charge the battery immediately after using the product and wait for the battery to cool down for 10-15 minutes.
- 6.The charging temperature of the battery should be between 0 C and 40 C.
- 7.It needs to use the factory charging line when charging. And the charging line can only be charged on the computer, if the adapter is needed, please purchased it additionally. It is forbidden to select other adapter yourself. The charging shall be supervised by someone, otherwise, in case of any accident, the manufacturer shall not take any responsibility.

RECOVERY

The device consists of electronic components and batteries. For electronic waste, please carry out special treatment according to the local waste treatment requirements.

**SAFE FLIGHT GUIDE**

It is recommended to fly under the following conditions:

- Fly in a open unobstructed environment
- Strong GPS signal
- Fly within Visual range
- Control flight Height below 120m

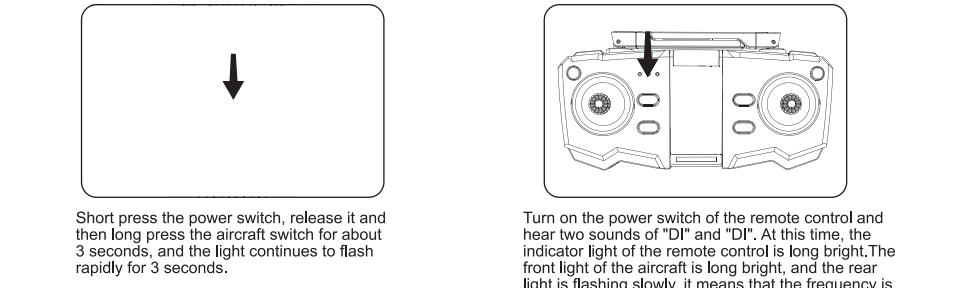
It is recommended to avoid flying over or near people, trees, high-voltage power lines, buildings, airports or water, as well as high-intensity power or base stations, because it may affect the compass on the aircraft.

Do not use this product under severe weather conditions, such as rain, snow, fog and wind speed exceeding 10m / s or 22mph.

Keep away from rotating blades and motors. It is very important to understand safety guidelines for safe flight. Please read them carefully before flight.

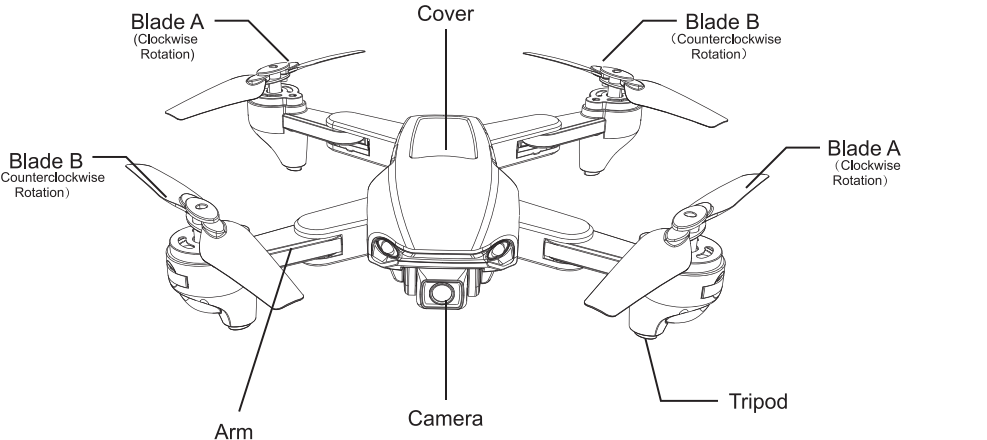
PREPARATION BEFORE TAKE-OFF

FREQUENCY



PRODUCT INTRODUCTION

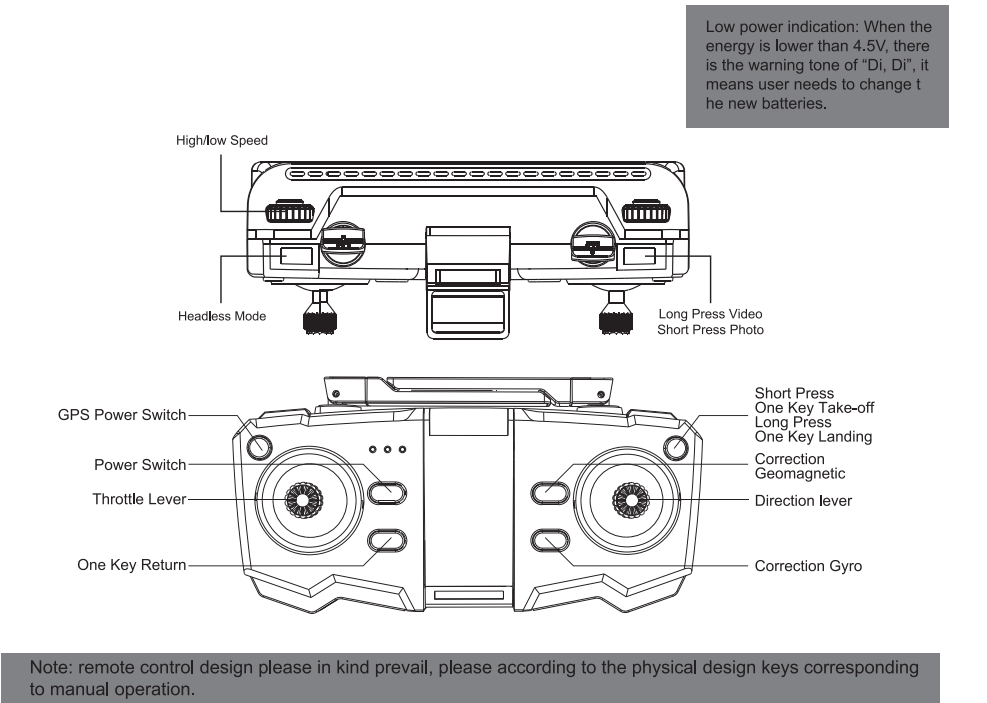
AIRCRAFT INTRODUCTION



NOTE: Photos are for reference only, please in kind prevail.

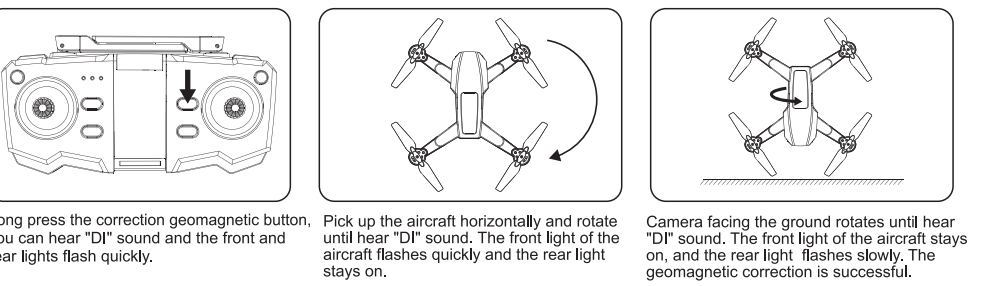
When replacing the blades, ensure that the blades a / b installed on each shaft are consistent.

REMOTE CONTROL INTRODUCTION

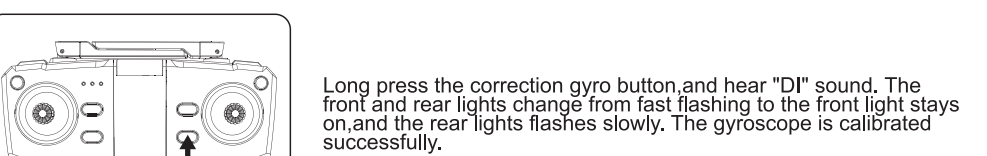


Note: remote control design please in kind prevail, please according to the physical design keys corresponding to manual operation.

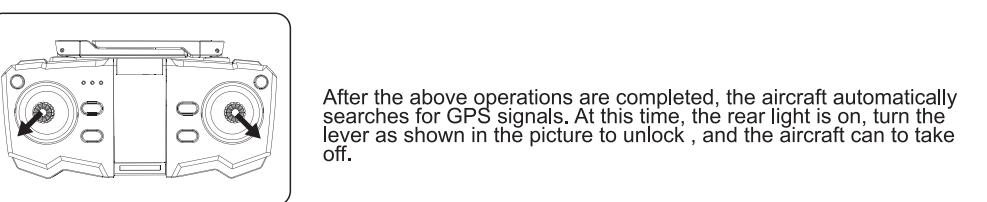
CORRECTION GEOMAGNETIC



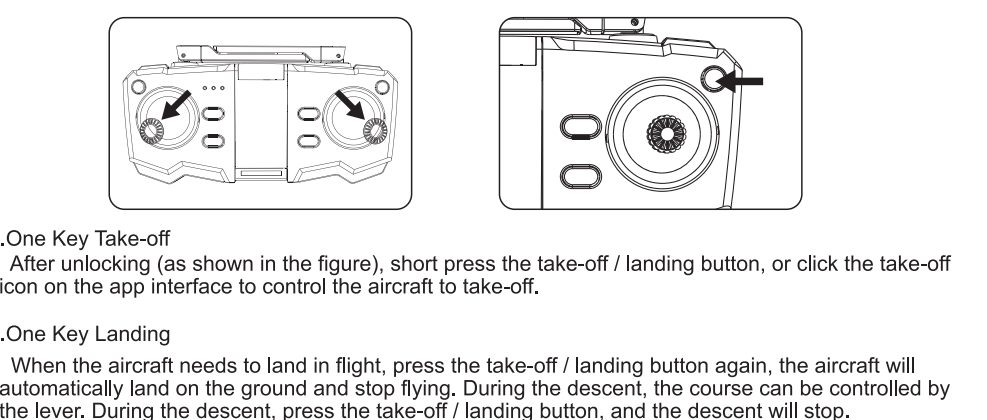
CORRECTION GYRO



TAKE-OFF

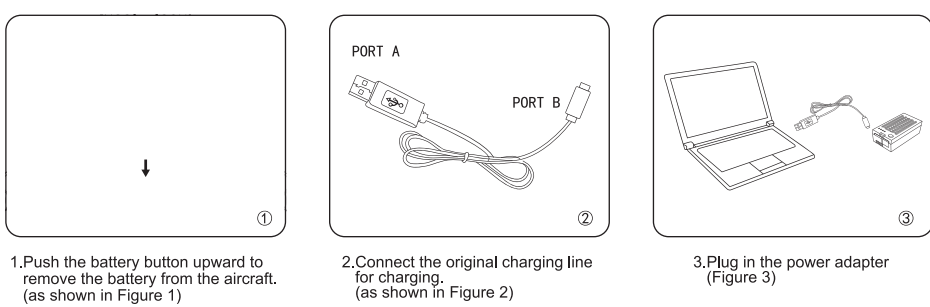


ONE KEY TAKE-OFF/LANDING



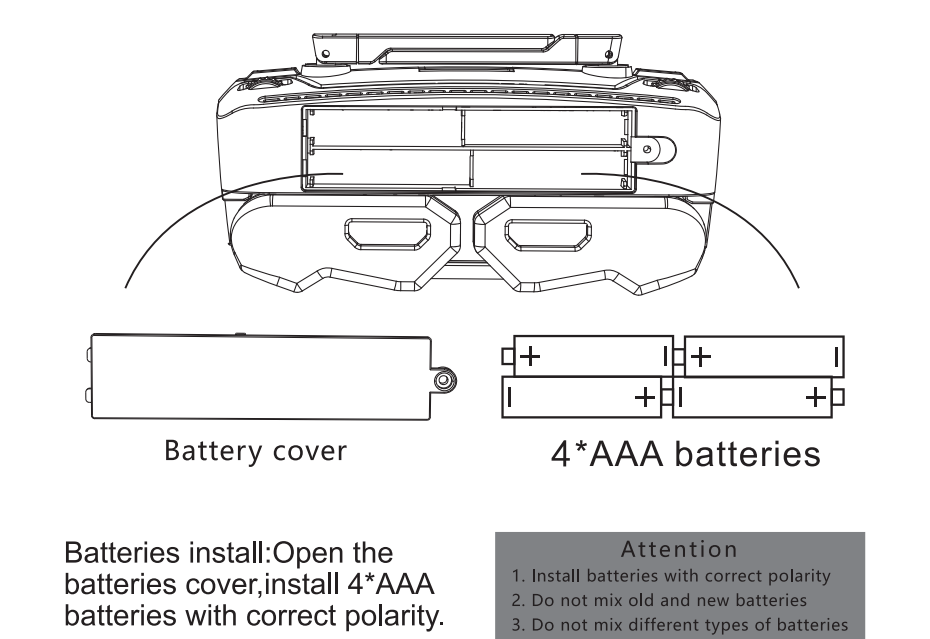
CHARGING AND BATTERY INSTALLATION

CHARGING

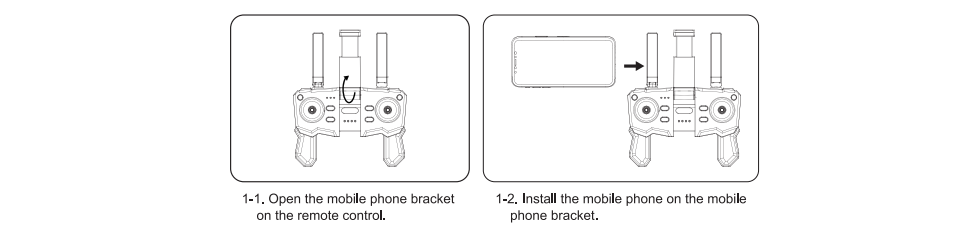


As shown in the figure,after disconnecting,connect port A to the computer's USB interface,the red light will be on,and the port B will be connected to the lithium battery.The red light will be on and the green light will flash.The green light is on when full.Charging time is 180 mins.

REMOTE CONTROL BATTERY INSTALLATION

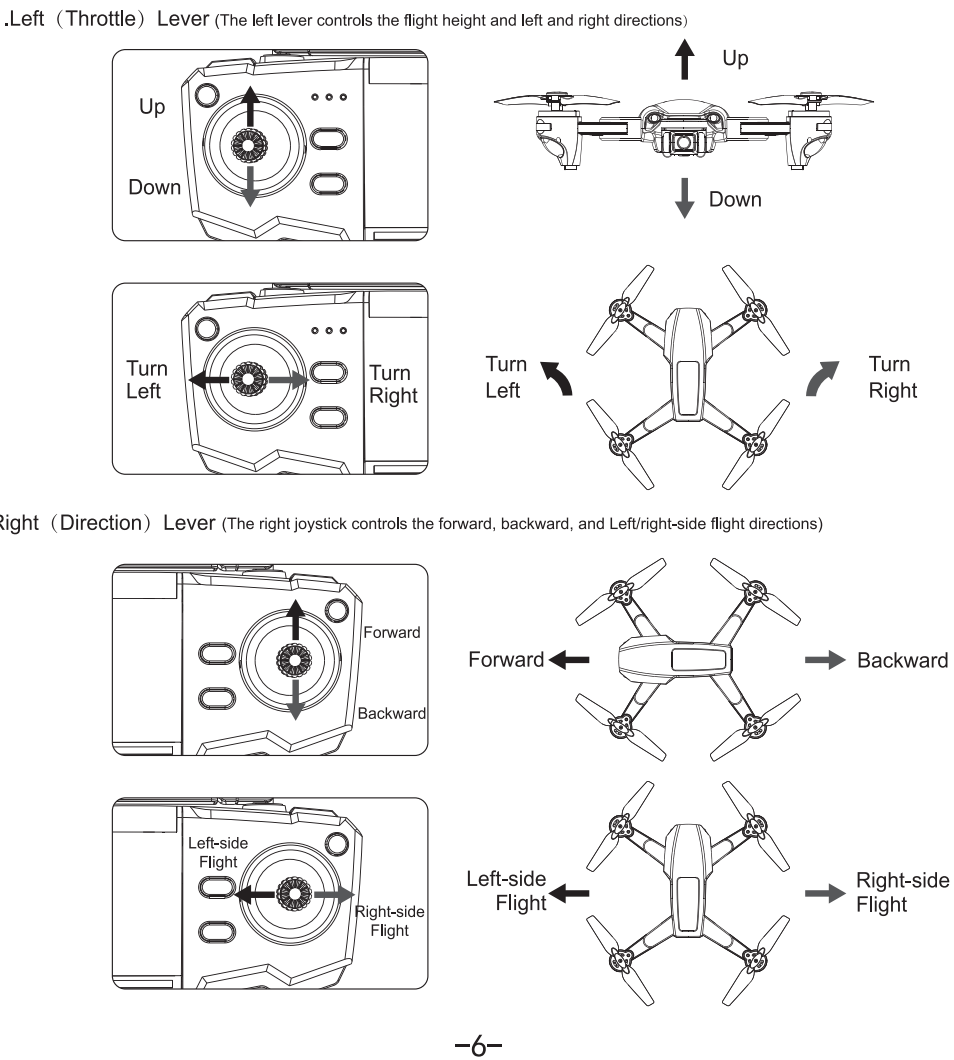


MOBILE PHONE INSTALLATION



FUNCTION INSTALLATION

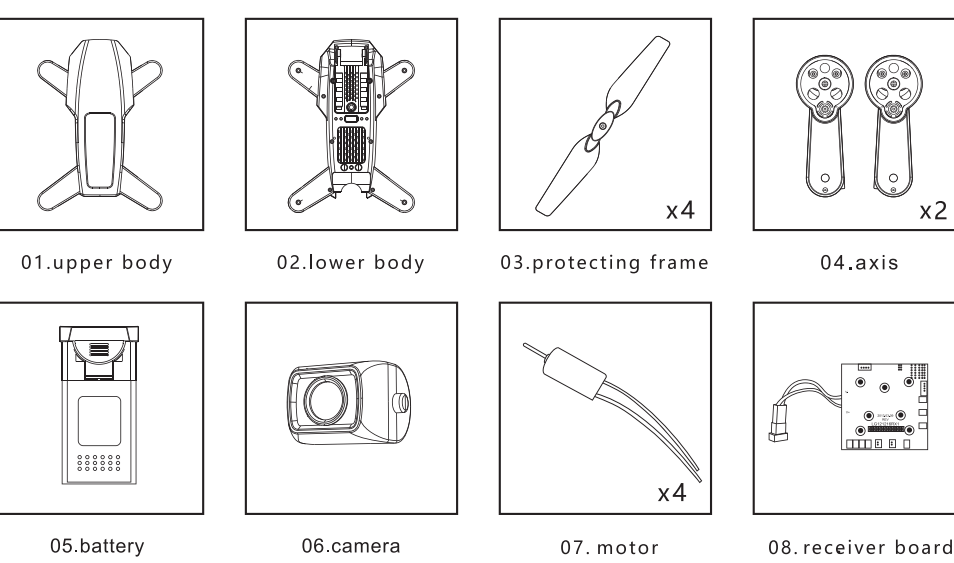
LEVER INTRODUCTION



PROBLEM SOLVING GUIDE

problems	causes	solutions
Power off of the remote controller	1 The switch is on the position of "OFF"	1 Move to the position of "ON"
	2 Batteries in wrong polarity	2 Checking and correct the polarity of batteries
	3 Power off	3 Checking and change the new batteries
Remote controller has no response	1 No turning on the energy	1 Move to the position of "ON"
	2 No connecting the aircraft' s batteries	2 Checking and correct connect the power on
Aircraft can not be up	1 Rotor speed is too low	1 Push up the accelerator
	2 The aircraft' s power is not enough	2 Please make the aircraft' s batteries fully charged
Out of control	Accelerator operated no return the aircraft upward	when you do the frequency modulation, the accelerator operated should be back to the original position
	Out of the control distance	Please play within the effective distance
Excessive landing	The speed of accelerator pulling is too fast.	Please pull the control lever slowly, maintain a smooth landing.

ACCESSORY DRAWING



Note: photos are for reference only, please in kind prevail.

