

70mm

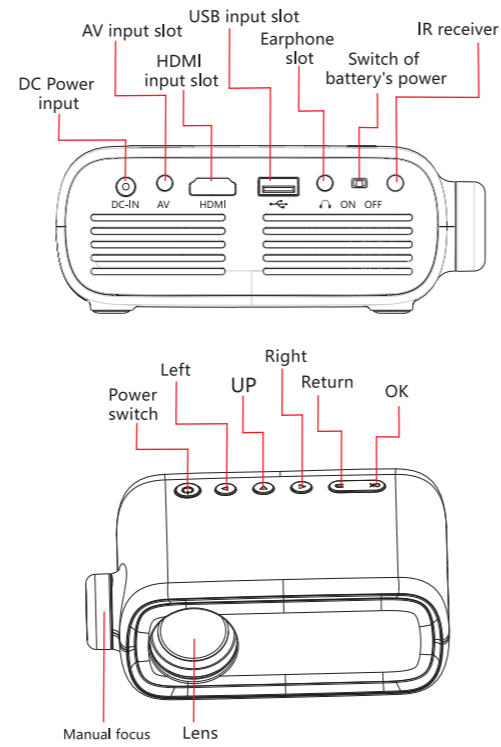
120mm

### 1 Safety notice

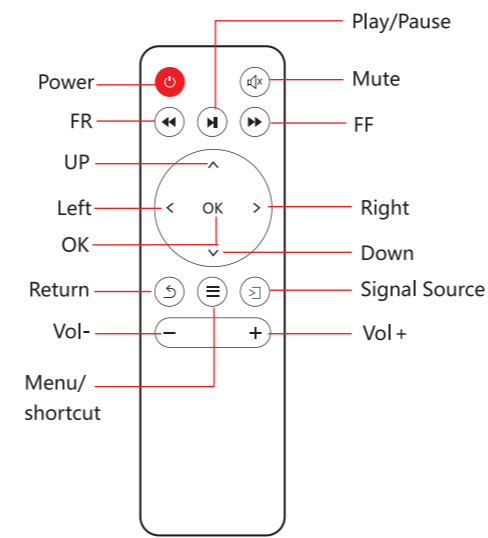
- 1.1. Please read Manual carefully before you use the projector.
- 1.2. To ensure stable power supply, please use national standard power cable and power cord with grounding.
- 1.3. Please use the same power voltage as the projector marked.
- 1.4. Please do not open the projector, otherwise the supplier will not afford warranty service.
- 1.5. Do not look directly at the projector lens while the machine is working to avoid damage your eyes.
- 1.6. To avoid clog of the projector vent, please do not cover with cloth, carpet and other materials.
- 1.7. This projector does not have waterproof function, please keep it away from rain, moisture and other items containing liquid such as vase, cup, etc.
- 1.8. To avoid electric please keep the projector away from rain or water or moisture.
- 1.9. And cut off the power supply if do not use this project for a long time.
- 1.10. Use the originally foam or other unit-shock material to protect projector, if you need transport this projector.
- 1.11. If you find the projector have problems, please contact with the supplier, do not repair by yourself.
- 1.12. To extend the projector life span and protect your eyesight, we suggest you may have a break after 3-4 hours using.

Maintain Indication:  
1-year warranty from factory, for more warranty information, please contact with supplier (warranty service is not including the frame, manual, package, and some subjective idea about the video, sound, image aspects).

### 2 Interface introduction



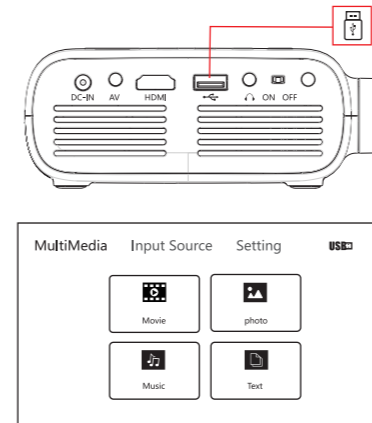
### 3 Remote control introduction



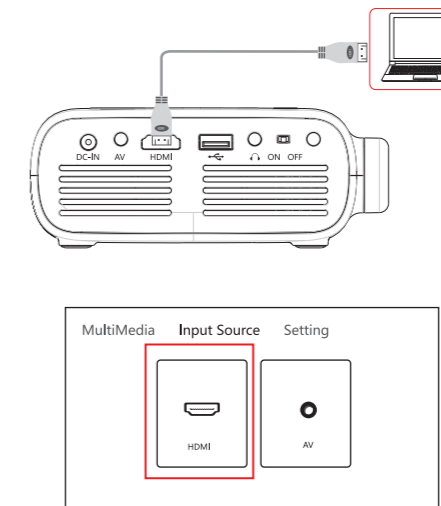
\*NOTE:  
1. To avoid power shortage, please do not mix use the old and new battery at the same time.  
2. To avoid battery leakage corrosion, if do not use remote control for a long time, please take the battery out.  
3. When using the remote control, please align the remote control signal transmitter to the projector's infrared signal reception position.

### 4 Media connection

4.1. Media input slot connection  
Connect the USB with the content to the projector USB port, select "Media", you can select movies, music, photo, text on the list.

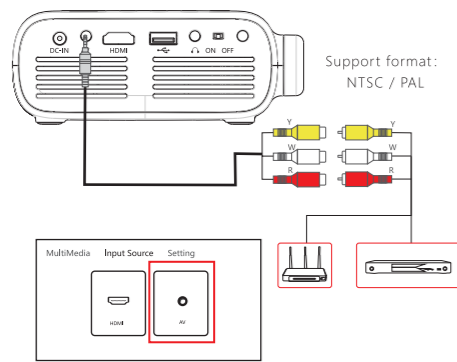


4.2. HDMI equipment connection  
HDMI slot could connect to computer and all the device with HDMI slot. As connected, choose the option HDMI.

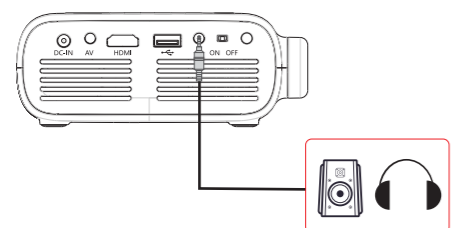


封底

4.3 AV video equipment connection  
Use 3 in 1 cable video convert cable, connect projector AV slot, the connection method like the picture, as connected, choose the signal source video.

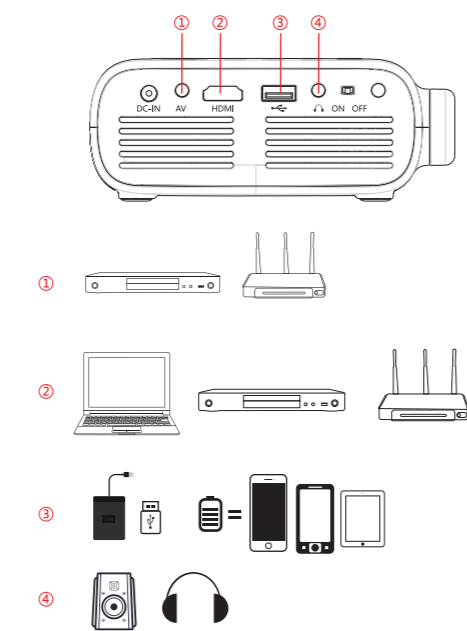


4.4 3.5mm audio device connection  
Could connect 3.5mm earphone and speaker equipment.



### 5 Projector connection introduction

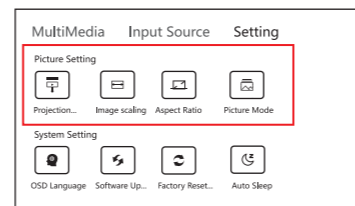
5.1 Connection introduction



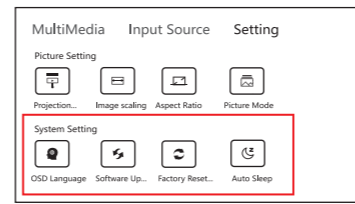
\*Could connect multi-device and applications.

### 6 Setup menu

6.1 Picture setting  
Open the home page--"Setting", find the picture setting, you can set up the projection mode, image scaling, aspect ratio, picture mode of the projector.

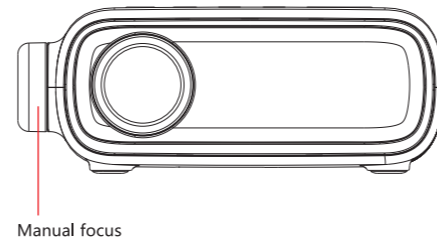


6.2 System setting  
Open the home page--"Setting", find the system setting, you can set up the OSD language, software update, factory restore, auto sleep of the projector.



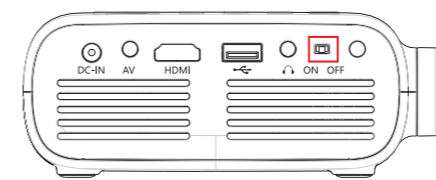
### 7 Image focus

Put the projector vertical to the projector screen or white wall, adjust the keystone, until the image clearly enough, then the focus is finished. During the focusing, you could display video the menu while adjust the focus.



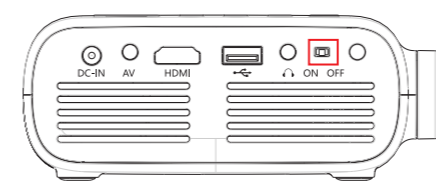
### 8 Built-in battery power supply (Available for models with built-in battery only)

Fiddle with the button to "on", then projector will be charged by built-in battery. In this situation, projection brightness will be a little lower. Battery symbol will appear on projection screen to indicate the remained power volume. \*It takes about 3 hours for charging.



### 9 Switch of battery's power

This switch is only available for the battery built-in version. There is no switch on the basic version.

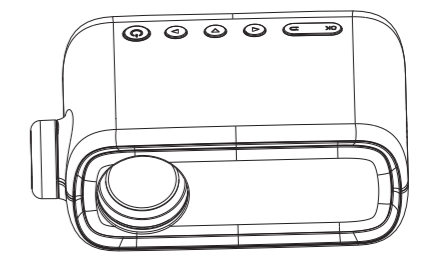


### 10 Technology Features

10.1 Basic parameters

Imaging technology	TFT LCD	
Resolution	480*272	
Highest resolution	1920*1080	
Light	LED	
Operation mode	Manual operation	
Projection distance	0.5-2M	
Projection ratio	1.65:1	
Aspect ratio	16:9	
Power supply	Standard	Adapter:12V-2A
	Built in battery	Adapter:12V-2.5A Lithium battery:7.4V/1200mAh
Input	HDMI/USB/AV	
Output	Earphone	
Net weight	0.628kg	
Unit size	142*92*55mm	

### User Manual



Due to continuous improvement, actual product may different from the manual, manual is for reference only.

封面