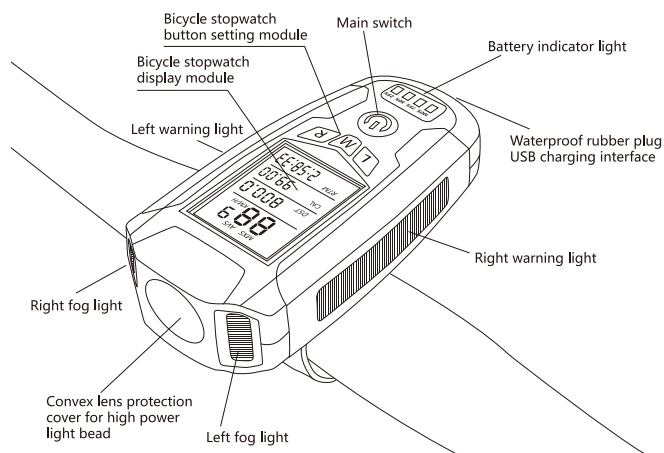
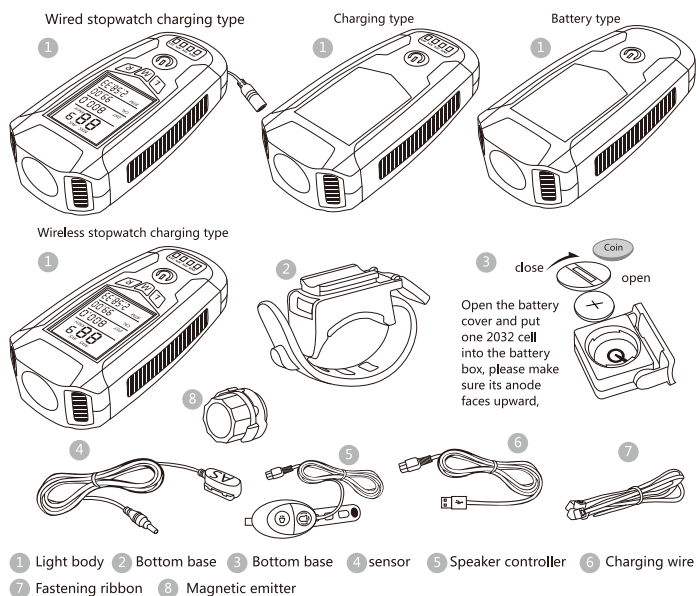


AS0808 User manual

Product description



Parts list/Four optional types



Wired stopwatch charging type

Light + bottom base + speaker controller + wired sensor + magnetic emitter + fastening ribbon + charging wire

Wireless stopwatch charging type

Light + bottom base + speaker controller + wireless sensor + magnetic emitter + fastening ribbon + charging wire

Charging type

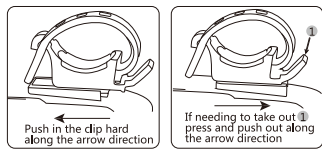
Light + bottom base + speaker controller + charging wire

Battery type

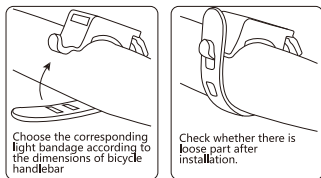
Light + bottom base + speaker controller

Installation Instructions

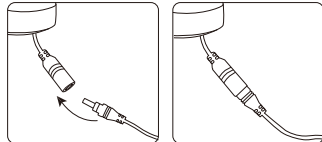
Clip installation figure



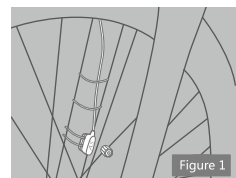
Light bandage installation figure



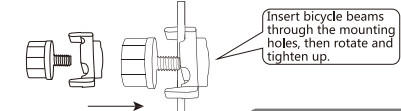
Wired stopwatch signal interface connection scheme



Magnet and wired stopwatch sensor installation figure

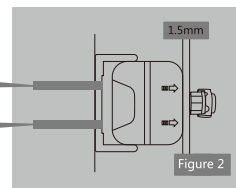


Cable fixation: arrange cable along the front fork, then use some fastening ribbons to fasten, the cable for handlebar must be entwined onto it and fixed with fastening ribbons so as not to hinder handlebar movement.



Choose the corresponding magnetic mounting hole according to the diameter of beam inside the wheel, install the emitter and make it on the same side with the mounting hole, rotate and tighten up, then adjust the distance between the magnet and sensor to 1.5mm, refer to Figure 1 and 2 for details.

Use some fastening ribbons to fasten the wireless sensor onto the bicycle front fork, adjust the distance between the magnet and wireless sensor to 1.5mm or so, then tighten up the screws.



Product Characteristics

Utilize German quality standard and anti-dazzle lens similar to automobile dipped headlight, thereby not causing dazzling effect for road passengers and drivers and ensuring personal security. Match with 2 highlight amber fog lights, having strong penetrability, being able to light up the front roads even in foggy or rainy days. 10 COB red light beads on both sides, enabling high visibility of drivers and passengers around, making the passengers and coming bicycle can see each other from a long distance, thereby having the warning effect. Built-in 1200mA battery with fender function, anti over charging and discharging, having high safety performance and long life cycle up to 3.5-6.5 hours. Split switch design, upper part controlling light modes, bottom part controlling speaker volume, enabling more convenient operation. 4 battery indicator lights, having high accuracy, making you get to know the real-time battery and enjoy a carefree trip. Smart anti-theft alarming mode, being triggered by vibration, being able to prevent and intimidate stealer. 130 high decibel deafening sound, 5 speaker modes optional and suitable surely for you; 5 lighting modes, 300 lumens output, lighting up the road to your home.

Stopwatch function descriptions

Max speed(Max riding speed)
Average speed (Average riding speed 0.0-99.9)
Speed (current riding speed)
Single trip mileage (single riding mileage)
Riding time (single riding time)
Total mileage (total mileage 0.000-99999 kilos/miles)
Calories (heat consumed 0.0-99999)
LCD night light (long press M button for 3 seconds to let it on always, press again to turn it off)
Fat (fat consumed)
Temperature (ambient temperature)
Stopwatch

Time mode (12H/24H)
Hibernation mode (hibernation initiated if no signal for 5 minutes, only time and time symbol displayed)
Km/Mile (kilometer/mile setting)
Maintenance reminder function
Refuel reminder function
Low-battery reminder function (flashing reminder if voltage lower than 2.5V)
Tire circumference setting
Total mileage initial setting
Total riding time initial setting
Riding data sampling function
Wired/wireless optional
Chinese/English

How to reset the parameters

Press L and R buttons at the same time for more than 3 seconds to set various parameters (mileage, unit, wheel radius, weight, maintenance value)

Setting procedures:

1. Enter mileage unit setting, the unit is kilometer by default, use R button to switch between kilometer and mile, use M button to confirm.
 2. Enter tire circumference setting, value being 2060 by default (2060mm is the tire circumference), the numbers are in flashing status, then set from left to right, use R button to change the numbers and M button to confirm.
 3. Enter weight setting, confirm its unit first, value being 065 by default, the character K becomes flashing (K is unit for kilogram), press R button to switch to L (L stands for pound, 65 kilograms equal to 143.3 pounds), press M button to set from left to right, use R button to change the numbers and M button to confirm.
 4. Enter maintenance setting, value being 200 by default, press R button to switch among 4 values 200, 400, 600 and 800, use M button to confirm, the initial setting is already finished.
- If intending to restore to resetting, long press L and R buttons for 3 seconds to enter resetting, the operation procedures same as the aforementioned.

Mode Descriptions

Total mileage mode

This mode displays average speed, total mileage, temperature, time, stopwatch.

How to set total mileage zero clearing

Press L button to make the total mileage character flash, long press R button for more than 3 seconds, then set from left to right, use R button to set and L button to confirm. The setting range is 0.000 to 99999, zero clearing will happen automatically if exceeding the range.

How to set temperature unit

Press L button to make the total mileage character flash, then press R button for more than 3 seconds, then set from left to right, long press R button for more than 3 seconds to make "degree centigrade" character flash, then press R button again to change the unit from Centigrade to Fahrenheit, use M button to confirm.

How to set time

Press L button to make the time symbol flash, then long press R button to switch between 24H and 12H, press R button again to confirm; press L button to set time, then press R button again to change time numbers, use L button to switch among hour, minute and second, use R button to set and M button to confirm.

How to switch to stopwatch

In the total mileage mode, press R button to switch to stopwatch, press L button to initiate. Press L button to pause, press L again for zero clearing and restart; press R button to switch from stopwatch to time mode.

Single trip mode

This mode displays max speed, single trip, calories, riding time.

How to switch calories and fat

Press R button, calorie or fat functions will switch to each other automatically.

How to zero clear all data

Long press L button for more than 3 seconds, max speed, single trip, calories, riding time will zero clear automatically.

Speed (current riding speed)

Speed can only be shown when riding, the topmost speed character flashes with the accuracy of 0.1 kilometer per hour, the speed range is 0.00-99.9 kilometers per hour or 0.00-99.9 miles per hours; if not in riding status, the screen shows the max speed or average speed.

LCD nightlight

In 24H time mode, set with 17:00-07:00, press any button, the back light will be on for 4 seconds; long press M button for more than 3 seconds under any time setting, the back light will be on always; also long press M button for more than 3 seconds to turn off the back light.

Cancellation of maintenance symbol

When the riding distance exceeds the set maintenance mileage value, the maintenance mileage character will flash, long press R button for more than 3 seconds under any mode to cancel the reminder.

Power-saving mode

If there is no input signal or button pressing after 5 seconds, the hibernation mode will start, only time and time symbol are displayed.

Low-battery reminder function

When the battery voltage is lower than 2.5V, the battery symbol will flash to remind that the battery needs to be replaced or charged.

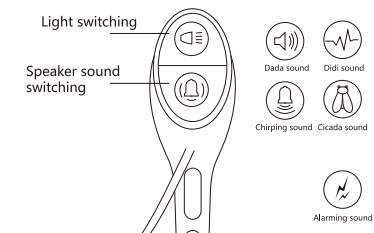
Wheel specification	Circumference (mm)
16 " x1.5 "	1206
16 " x1.95 "	1253
16 " x2.0 "	1257
20 " x1.25 "	1450
20 " x1.35 "	1460
20 " x1.5 "	1490
20 " x1.75 "	1515
20 " x1.95 "	1565
20 " x1-1/8 "	1545
20 " x1-3/8 "	1615
20 " x1-1/4 "	1618
22 " x1-3/8 "	1770
22 " x1-1/2 "	1785
24 " x1(520) "	1753
24 " x3/4 " tubular	1785
24 " x1-1/8 "	1795
24 " x1.75 "	1890
24 " x1-1/4 "	1905
24 " x1.9 "/1.95 "	1916
24 " x2.00 "	1925
24 " x2.125 "	1965
26 " x1.0 "	1913
26 " x1.25 "	1953
26 " x1.5 "	1985
26 " x1.75 "	2035
26 " x1.9 "/1.95 "	2055
26 " x2.0 "	2074
26 " x2.1 "	2095
26 " x2.25 "	2115
26 " x2.3 "	2135
27 " x1-1/8 "	2155
27 " x1-1/4 "	2161
29 " x2.1 "	2288
29 " x2.2 "	2298
29 " x2.3 "	2326
650cx20mm	1945
650cx23mm	1990
700c tubular	2130
700cx20mm	2074
700cx23mm	2105
700cx25mm	2124
700cx28mm	2136
700cx30mm	2145
700cx32mm	2155
700cx35mm	2168
700cx38mm	2180

Wired stopwatch/wireless stopwatch parameters

Mode:AS0808
Size:101.5(L)X49.5(W)X24.5(H)
Led: XPG+COB+2835X2 PCS
Main light/Fog light: 300 lumen/30 lumen
Battery: 1200mA polymer lithium battery (with fender)
Charging cycles: 500+ times
Sound mode : 5 types
Sound decibel:130db
Material: ABS+GPPS
Charging time: about 2.5 hours
Waterproofing grade: 4 (anti-drizzle)
Battery indicator light brightness: 100%-75%-50%-25%

Mode	Lumen	Battery time	Mode
Gear one	300	4.5h	2.5h
Gear two	30	6.5h	
Gear three	100	6h	
Gear four	300	3.5h	
Gear five	100	5.5h	

Speaker with 5 sounds



How to install speaker wire
There is a USB charging hole and a speaker wire connector hole at the tail part of bicycle light.
How to switch among speaker sound modes
Long press the speaker switch for over 2 seconds.

How to initiate smart anti-theft alarming mode

Long press the main button for over 3 seconds, you will hear the didi sound 4 times, 5 seconds later, if the bicycle is subject to some extent of vibration, it will initiate the alarming sound for 15 seconds, if being vibrated again, it will sound with the second kind of alarming sound; long press the main switch to turn off the alarming sound function.

Charging description

Micro USB charging is applied, it also supports cell phone power supply adapter, vehicle-mounted USB interface, computer USB interface and portable power bank. You only need to open the waterproof rubber plug at its tail, connect with the charging wire, the charging is fully done if all the 4 battery indicator lights are on.

Notes for light usage

Please don't irradiate eyes.
Don't soak it in water.
Avoid hard impact
It is recommended to charge once a month if not using for a long time.
Keep off children contact.
Please don't place this product near fire or high heat source.
Please shut down the power supply if not using.
Please don't disassemble if not being professionals.

Please don't disassemble if not being professionals.

Failure	Failure causes
Speed indicator always being zero when riding	Incorrect distance or angle between magnetic emitter and sensor
Speed indicator always being zero when riding	Incorrect parameter setting (bicycle wheel circumference)
Screen blackout	Too long exposure to strong sunlight, it will restore to normal if put in shadowy or dark area for a period.