

User Manual

Thank you for Purchasing 4G USB Modem. This product brings you a high speed Network connection.

Welcome to 4G USB Modem

4G USB Modem provides the following functions:
·Connect ·Statistics ·Records ·USSD ·Setting

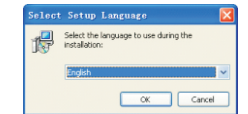
Get 4G USB Modem Ready

Place the USIM/SIM card into slot, and make sure that the USIM/SIM card is fully in place.

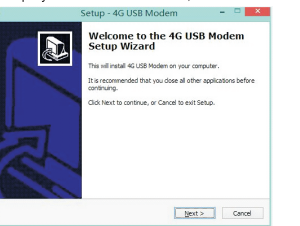
1. Installation Guide

- (1) Connect the 4G USB Modem with your PC.
- (2) And then wait 60 second, ensure 4G USB Modem to install software automatically.

Note:
After Waiting 60 second, if 4G USB Modem don't install software automatically, please install the Software by yourself, double click from "my computer", the screen will display the windows as below,select the language and click"OK".

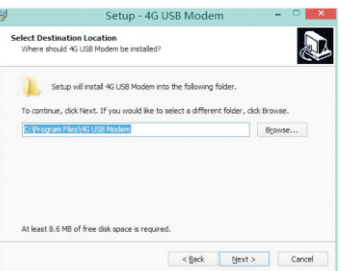


the screen will display the windows as below, click "Next"

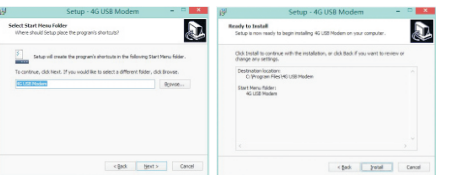


1

the screen will display the windows as below, set the installation path and click "Next"



the screen will display the windows as below, set the folder name and click "Next"

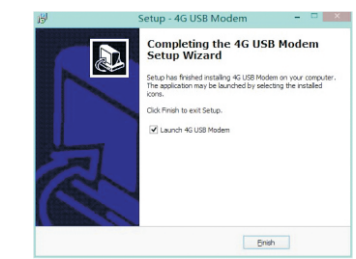


the screen will display the windows as above, click "Install" to start installing,

Wait for the computer to automatically install the data card driver, need wait for 2~5 minutes.

Click "Finish" to finish the installation.

2



After installation is complete, the "4G USB Modem" will be added to the system program automatically. And you will see the short icon:



2. Connecting 4G USB Modem with a PC and Internet

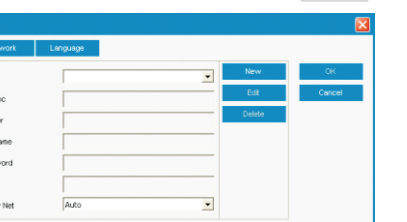
(1)After finished Installation, it will display as "P1", and it will auto-detect the SIM profile



P1

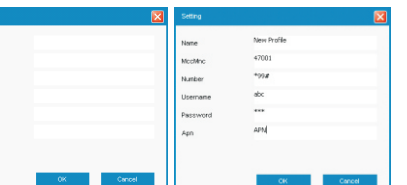
3

(2) Connecting with a user-defined logon profile Click on **File**



P2

(3)If add a new connection profile. Click on <New> to open a new connection profile window: "P3"

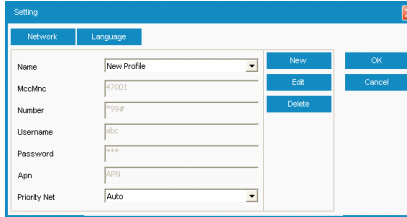


P3

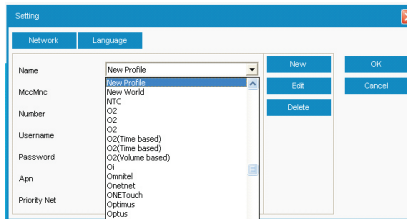
P4

After finished fill local network operator information in "New Profile" ,such as "P4" Click on <OK> to add it to the available profile list. "P5"

4



P5



P6

Then the new added profile will be set as default automatically, you could check, edit or delete any of the profiles by the slide roll, as showed in P6.

Connect to the Internet

1. Connecting with the default logon profile

The software will auto-detect profile of the SIM card, just click on **Connect** from the main window;

Wait several seconds until the connection is established;

5

Once you are connected, **Connect** will change into **Disconnect**

2. Disconnecting

Click on **Disconnect** from the main window to disconnect from the Internet.

Main Interface Introduction

The 4G USB Modem is designed to enable PC users access to the Internet via GPRS/EDGE/UMTS/HSPA/LTE networks. It uses a standard USB interface for a fast simple connection to your PC.

1. Icon Functions

Connect / **Disconnect** : Connect / disconnect to Internet



Statistics : Access to check the Statistics Status



Records : Access to the records



USSD : Access the USSD service window



Setting : Access the Setting service window

(1) Connection

This application will ensure easy connection to the Internet. Users will be able to enjoy a high-speed data service by clicking on the **Connect**

6

button in the main window. Users can also access the connection status in the tray bar, including connection time and volume of data transferred.

(2) Statistics

It supports the following functions:
Current Link Info
Upload speed and data
Download speed and data

(3) Records

It supports the following functions:
All records
Monthly stats
Interval stats

(4)USSD

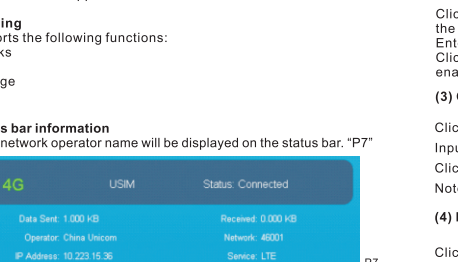
With this interface, users can use the USSD service if your carrier's network support it.

(5) Setting

It supports the following functions:
Networks
Pin
Language
Mode
Reset

2. Status bar information

Current network operator name will be displayed on the status bar. "P7"



If no SIM card is found, "No (U)SIM" is displayed

If the SIM card is invalid, "(U)SIM" is displayed

If no network is found, "Disconnected" is displayed

7

3. Signal status bar


 : Indicates the signal strength of the current connected network

 :Indicates there is LTE network


4. Tray Icon

If you click on **File** from the main window. A menu with various settings will appear.


(1)Network mode

Select <Network mode> in  menu. (The default according to the (U)SIM network type in connecting establishment.)Click <GPRS Only >/<CDMA Only><EVDO Only>/<UMTS Only > / <LTE Only >/<Auto> , it will search and register the network mode which was chosen at next time of device connection.

(2) Request PIN

Click on the  menu and select <Enable/Disable>. Activate the PIN input dialog box; Enter the correct PIN code; Click on <OK>. You will see the following message "PIN code has been enabled (disabled)".

(3) Change PIN

Click on  and activate the PIN modify dialog box; Input the old PIN and the new PIN, then confirm;


Click on <OK> to confirm the new PIN code

Note: You can only access the modify menu if the PIN is enabled.

(4) Language

Click on  , and select <English/Indonesian>,then click "ok"

(5) Reset

Click on  , and select <Reset Factory Data>.

6. Help

You can get information on the version in the <About> menu.

8

FAQ

1. Q: Which operation systems does the software support?

A: It supports Windows 2000, Windows XP, and Windows Vista, Windows 7/8, Android

2. Q: The software does not auto-run when the device is plugged in.

Situation1: if there is no notification from the PC, please check if the auto-run has been disabled by Windows.

Situation2: If the device remains on the U-disk, please check if an anti-virus application has disabled the auto-run.

A: Please launch the software manually if you do not change the configuration of your PC.

3. Q: I cannot install the driver

A: On some PCs, installation of the driver may take a long time because of the PC configuration. So please wait and do not cancel the process or you will have to uninstall and re-install again.

4. Q: What should I do if the (U)SIM card is unplugged during the application?

A: Please disconnect the device first, and then restart the application.

5. Q: The (U)SIM card does not register any networks

A: The reasons are shown below:

1. Unstable local signal;
2. The software is an old version;
- 3.Hardware problem.

You may:

1. Try to logon from another location;
2. Update the software;
3. Check the hardware or use another data card and retry.

6. Q: It failed to connect to the internet

A: Please make sure the connection profile and settings are correct.

9