

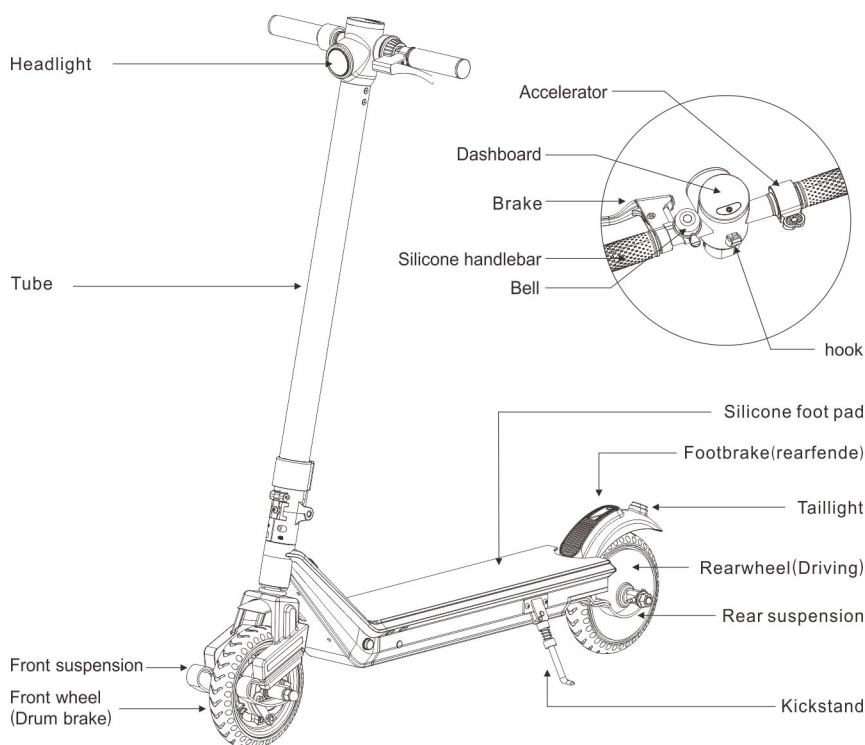
MANUAL

ELECTRIC SCOOTER

MODEL AND PARAMETER

Spec.	Items	Parameters
Size	Dimension: L*W*H	1120x500x1220 (mm)
Weight	N.W.	19kg
Requirements	Max load	100 kg
	Suitable for age	18~45 years old
	Typical height	> 150 cm
Main parameters	Max speed	25 km/h
	Millage	30~50 km
	Max slope	16 %
	Road condition	Cement, asphalt flat dirt road, less than 3cm deep concave
	Operating temperature	-10~45 (°C)
	Storage temperature	0~45 (°C)

FUNCTION DIAGRAM



DISPLAY & APP

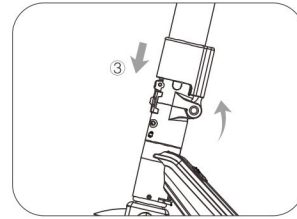
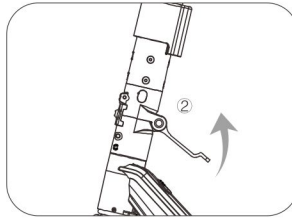
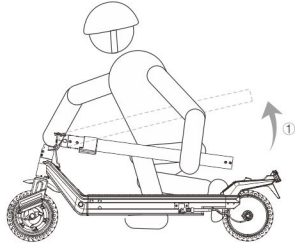


(Note: this manual is also applicable for 856 model & 856 model without front&rear suspension)

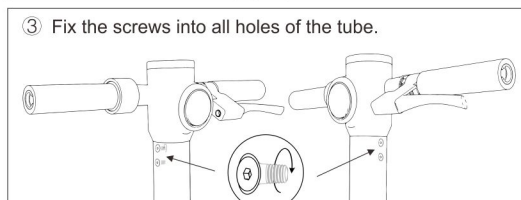
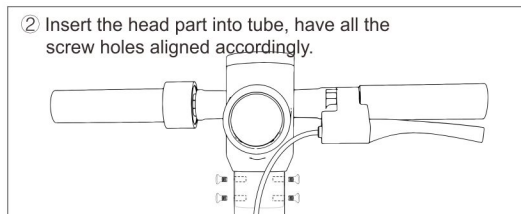
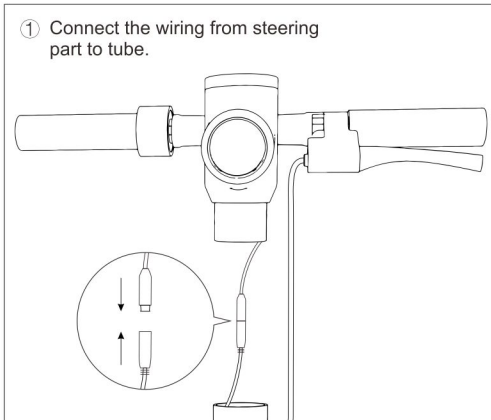
SCOOTER BODY ASSEMBLY FLOW CHART

1.Fold & unfold:

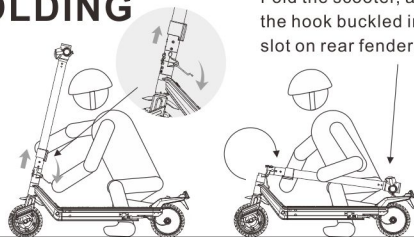
- ① Raid up the tube; ② pull the locking lever up till it touches tightly with tube;
- ③ Move the plastic shell to cover the locking lever.



2.Assemble the head part and tube.



FOLDING



Fold the scooter, and have the hook buckled into slot on rear fender.

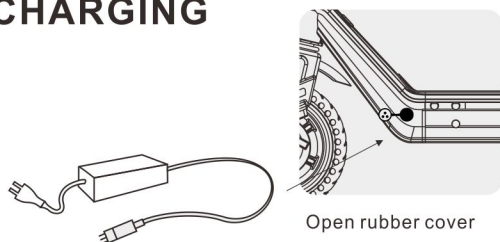
- 1.Make sure the scooter is powered off.
- 2.Move the plastic shell up, and pull down locking lever.
- 3.Put the tube down inwards till the lowest level position.
- 4.Have the hook of steering part buckled into slot on rear fender.

DRUM BRAKE

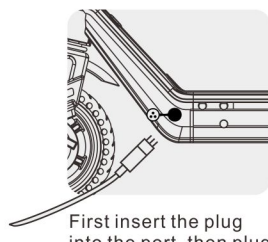


- 1.Put the brake cable into point A;
- 2.Put the cable into the rubber sleeve then through the hole of the brake wrench.
- 3.Tighten the nut and adjust the tightness according to actual usage.

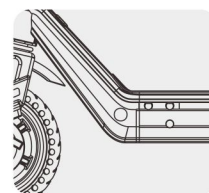
CHARGING



Open rubber cover

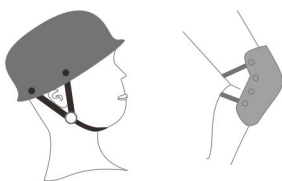


First insert the plug into the port, then plug the powersupply



After completion of recharge, cover the socket tightly

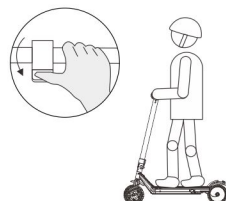
INITIAL RIDING IT



During learning, risk of slip hurt occurs, so wear helmet and protectives during trying it.Refer to image.



- 1 Turn power on, foot step on the scooter board, the other foot kick against ground backward.



- 2 When sliding smoothly and balanced, retreat the other foot and put on the board, then press the acceleration button to fastenscoot forward.



- 3 During running, touch the button of "Ⓢ", switch over speed. If the light is not strong at night, turn on light, keep the road bright.