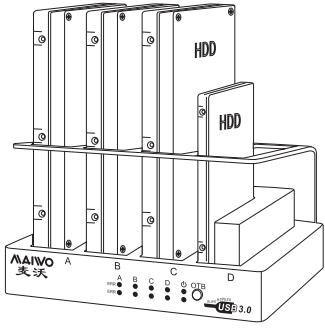




产品说明书



K305BU3S 四盘位硬盘底座

操作指南

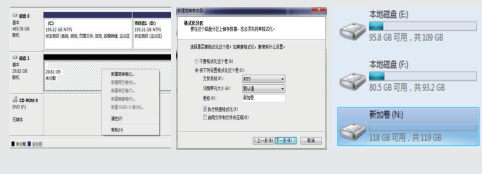
二、新硬盘初始化、分区与格式化教程

1、硬盘初始化：鼠标右键点击“计算机”，查看“管理-磁盘管理”发现新磁盘，将其初始化；



注：硬盘初始化有MBR和GPT两种格式选择，如果您的硬盘小于或等于2T，请选择MBR格式，大于2T请选择GPT格式。

2、分区格式化：新硬盘初始化后将会变成“磁盘1”，用鼠标右键点击“磁盘1”，然后点击“新建简单卷”进行分区，根据提示操作，可选择所需要分区的大小，并勾选格式化选项，可以依次建立多个分区，直到完成。



③

前言

感谢您购买MAIWO（麦沃）产品，为了您能够更好的使用本产品，请您在正式使用本产品前，仔细阅读使用手册所提及的操作要点及注意事项。

MAIWO（麦沃）为深圳市凯祥源科技有限公司注册商标。

声明事项

深圳市凯祥源科技有限公司只对产品本身存在的问题负有保修和维修责任，对于用户操作所引起的数据资料删改或丢失，不负任何责任，也不对因此造成的其它间接损失负责。鉴于数据资料的价值不可估量，正式操作本产品之前，重要资料请自行备份。

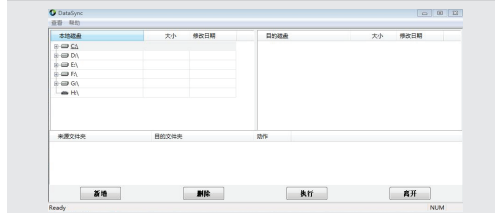
注意事项

如果您使用的是新的硬盘，需要将硬盘初始化并格式化后才能正常出盘。具体参考新硬盘初始化、分区与格式化教程。

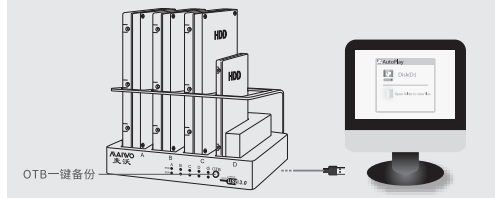
操作指南

三、一键备份：

- 1、联系在线客服或登录www.maiwo.hk搜索K305BU3S一键备份软件下载并安装到电脑上；
- 2、在备份软件里设定源文件夹和目标文件夹；



- 3、连接硬盘座到电脑；
- 4、按下OTB键，备份开始，LED灯不断闪烁，完成备份后LED灯停止闪烁。

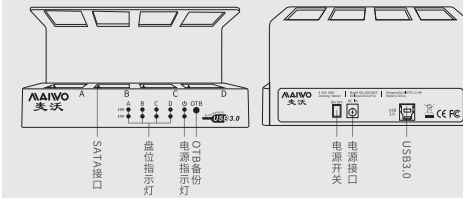


④

产品参数

产品名称：

MAIWO K305B 四盘位硬盘底座



产品名称	MAIWO K305BU3S 四盘位硬盘底座
支持硬盘	2.5/3.5英寸机械/SSD固态硬盘
盘位	四盘位
内部接口	SATA
外部接口	USB3.0接口向下兼容USB2.0/1.1
材质	ABS高强度工程塑料+铝合金(底板)
功能	硬盘读写、一键备份
尺寸	163x126x87mm
操作系统	WindowsXP/7/8/10、MacOS

①

技术支持

如果您在操作过程中遇到问题，请拨打我们的客服热线4000-666-205，我们的技术人员将为您提供技术支持。

关于保修

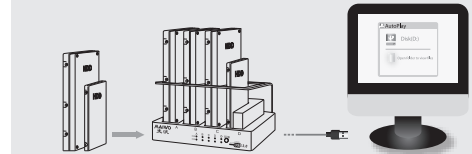
- A、本产品执行国家三包政策：如有质量问题，7天包退，15天包换，1年保修。起始时间以客户收到产品的日期起计算。
- B、关注MAIWO官方微信公众号，可免费延长保修。
- C、电源线、USB线等配件不在保修范围内，如损坏需有偿更换。
- D、天灾造成损坏不在保修范围内，可以提供有偿维修服务。
- E、消费者使用不当，造成产品故障，可以提供有偿维修服务。
- F、本产品如有需要保修，请快递至厂家地址：
深圳市光明新区观光路汇得宝工业区5栋3楼
深圳市凯祥源科技有限公司麦沃售后/4000-666-205

⑤

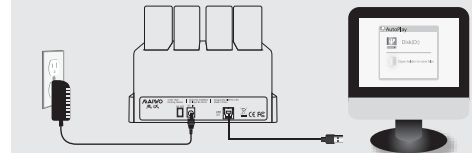
操作指南

一、硬盘读写功能：

1、将硬盘插入K305BU3S硬盘底座；用USB数据线连接K305BU3S硬盘底座和电脑USB接口。



2、连接电源到硬盘座，把硬盘底座后面电源开关打到ON，相应盘位的LED灯亮起，此时电脑会发现硬件并自动安装USB驱动。



注：如果是旧硬盘，那么在“计算机”里可以发现新增的硬盘，并可以正常读写。如果是新硬盘，则右键点击“计算机”--管理--磁盘管理，找到磁盘，初始化（或者格式化）后即可使用。

②

保修凭证

保修卡			
产品品牌	MAIWO	型号	K305BU3S
购买日期		保修期限	
用户姓名		联系电话	
客户地址			
技术支持 客服热线	4000-666-205		
销售商			
厂家地址	深圳市光明新区观光路汇得宝工业区5栋3楼		

⑥



User Manual



K305BU3S 4bay HDD Docking Station

< 1 >

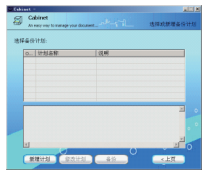
2) Install the software on computer (cainet-1.12-setup.exe)

3) Starting to backup data

1. Please click the buttons one by one as the steps, start, all programs, Cabinet, Cabinet, and then run the software. The windows of the software are as below.

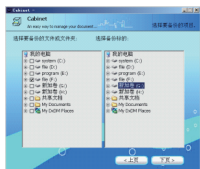


picture1

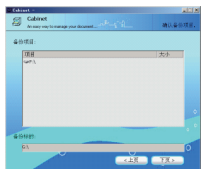


picture2

2. Click the button of backup, a window will show up as picture2. Please click the button, you want to backup on the left of a new project, then a new window as picture3 will follow. Please choose the files or file folders left of the window and choose the target disk you want to save the data on the right of the window.



picture3



picture4

< 4 >

K305BU3 Docking station with high performance and four slots

1. Product Introduction

This is a portable storage device using USB3.0 high performance and high speed chip, and supporting four pieces of 2.5inch or 3.5inch SATAIII disks or Solid State Disks. It is very easy to use and only need to insert or pull out 2.5 or 3.5inch hard disk directly. And the same time, it has OTB function too.

2. Product use matters needing attention

Thanks for your choice to buy this product, in order to be convenient for you to use all functions of this product, please read carefully this manual before using, which includes the matters to attend and instruction to use. The product in this manual had patents. Any counterfeiting is a tort and shall assume legal responsibility. There is a label with a number on our product and gift box, it is efficient voucher to repair. Never split or damage this number, otherwise, manufacture wouldn't be responsible for any free service to repair. This unit can be exchanged within three months after purchase and free service within one year.

Not all using environments are suitable for our products. We will provide free service for any quality problem itself, but do not be responsible for any data loss or other responsibilities when using this unit.

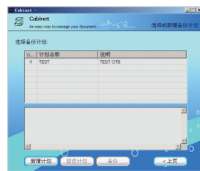
Warnings

- Please put the device carefully in case falling down and broken
- Please do not lay the device under the sun or high temperature directly otherwise the using time will be shortened
- Please far away from the hot temperature sources such as irradiation
- Please do not expose the device in the rain, water, or moist places such as bathroom or kitchen room where easy to get wet
- Please do not try to take apart the device
- Please backup your data, we will not take responsibility for data loss unless it is caused by our serious mistake
- We are only in charge to try our best to recover the data no matter the data loss caused by any reasons

3. After clicking the button of next page in the window as picture 3, a new window as picture 4 will show up. Make sure everything is correct, please click next, and then enter into step 5 as picture 5, putting in the content of planning name, planning notes, and finally choose the option of OTB in the window otherwise the button on the docking station will not work

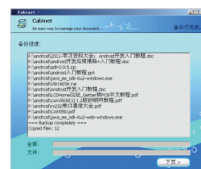


picture5

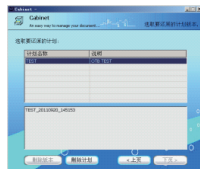


picture6

4. Clicking next in the window as picture 5, a new window as picture 6 follows. The window as picture 1 will show up again, if pressing the button of up page. At this time, please press the OTB button on the docking station, and then backup starts automatically and a window as picture 7 shows you a progress bar and the copy content



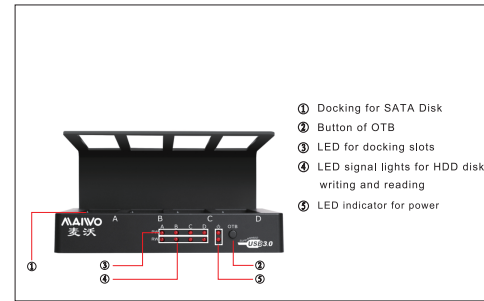
picture7



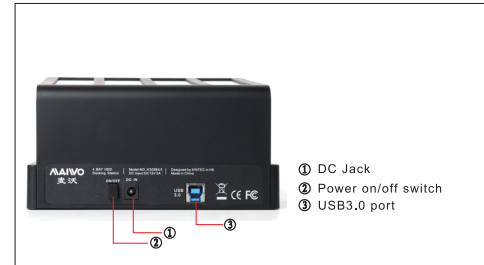
picture8

< 5 >

3. Introduction of the product interface



- ① Docking for SATA Disk
- ② Button of OTB
- ③ LED for docking slots
- ④ LED signal lights for HDD disk writing and reading
- ⑤ LED indicator for power



- ① DC Jack
- ② Power on/off switch
- ③ USB3.0 port

< 2 >

4) Data recovery

1. Finished backup, please check the button of recovery in the picture 1, following a new window as picture 8. If the button of the planning name is clicked, the button of planning delete will be available; if the button of planning notes is clicked, the buttons of version delete and next page will be available as picture 9. Please choose the button of version delete, and then click next page.

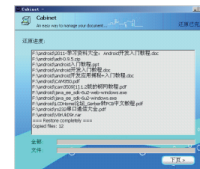


picture9



picture10

2. Please choose the files or files folders which needed to recover on the left of the window as picture 10 and choose the position where to keep the files or file folders on the right of the window and then click the button of next page to start recovery with progress bar and the recovery content showing up.



picture11

< 6 >

4. Accessories

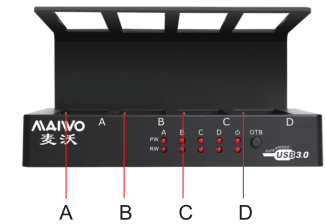
Series NO.	Name	Quantity
1	2.5" HDD Bracket	4pcs
2	manual	1pcs
3	Power supply	1pcs
4	Power cable	1pcs

5. OTB function. Please contact us for OTB Software. (Win XP or above, not support Mac OS)

1) Connecting to device

1. Please connect the DC jack to the HDD docking, and the other to wall-plug
2. Connect the USB cable with both the docking station and the computer
3. It is able to come up OTB function once HDD A is stand by, so there are several choices to install:
 - a. Putting in a disk in A slot
 - b. Putting in disks both in each A and B slots
 - c. Putting a disk in each A, B, C slot
 - d. Putting a disk in each A, B, C, D slot.

When the hard disks put well, please turn on the power of the docking station.



< 3 >

6. Appendix

Function description:

Product function	HDD docking station
Interface	SATA to USB3.0
HDD support	2.5inch, 3.5inch
HDD style	SATA HDD/SSD
Power supply	External power adapter
Supporting system	Win2000/XP/Vista/7/8/8.1/10/MAC OS or above

< 7 >