

# I15 User Manual



## 1, Quick Start

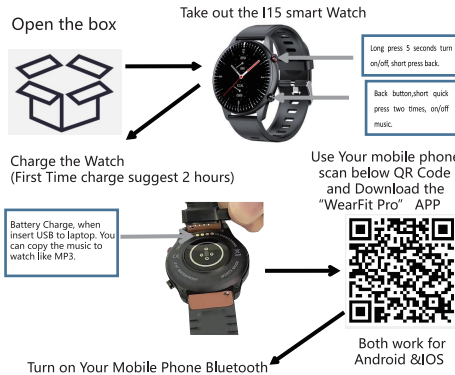
### 1.1 Warning

Smart Watches can monitor real-time dynamic heart rates, but it can't be used for any medical purpose.

### 1.2 Equipment requirements

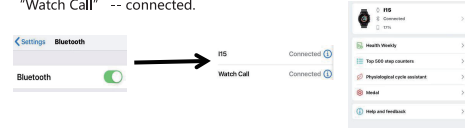
Support Android 5.1, IOS8.0 BT 4.0 and above.

## 2, Open Box and First time Quick Use.



Step 1: Open "WearFit Pro APP" -- "OK, Allow" -- "Registered" -- "Choose the country you are and register" --log in--- "Me" -- "Add device" -- "I15" --- "Pair" -- --Done

Step 2: Go to your mobile phone and open bluetooth- search "Watch Call" -- connected.



### Tips for the first time use:

2.1 Open the box, like the photo showed above, use the I15 charging cable, then insert the USB to your laptop or any USB port with 5V to charge the Watch before use to ensure that the Watch is fully charged. The charging time is about 2 hours. To ensure that the charging contact is good. Please ensure that the metal surfaces are not dirty, oxidizing and impurities. When charging, the screen will display the charging symbol. If the device is not used for a long time, please be sure to replenish it every one month.

2.2 When the Watch is first paired with "APP", it will synchronize the time, date, and quantity of the Watch battery and display the symbol of success of the BT connection

2.3 How to Boot Device: Long press the top key for 5 seconds and the Watch will boot.

2.4 How to Shut Down Device: In the watch interface page, long press the top key 5 seconds, then choose to shut down. The watch will be turned off and with vibration.

## 3 Watch function interface

3.1 Watch face: long press the watch face, it can be changed to 5 different watch faces. showed Dates, Time etc.

Customized watch face: go to APP WearFit Pro---Me--I15--Custom screensaver--choose" +" --Select Image--Done--installation--Done. Then you can see the photo will be showed in your watch.

3.2 From the watch face page, put your finger slide to left and right page. Showed below.

Setting: In this page, you can set the languages, brightness, sound etc. Phone: you can check phone call records, Contacts, keyboard, SOS, Dial settings.

Heart rate: measure your heart rates.

Weather: show weather status.

Data: show the step counts.

Sleep: show the sleep status, like sleep time, deep sleep time etc.

Music: you can control the music play in your mobile phone through this watch function, you can use the watch music, mobile phone music or connect the watch with your TWS/Speaker.

Stopwatch: use the stopwatch function.

Sports: there is 13 different sporting types for your choice.

Blood Oxygen: measure your blood pressure and oxygen data.

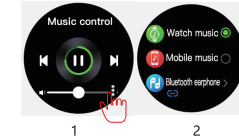
Take picture: control your mobile phone camera to take photos.

Timer: you can set the time to use the timer.

MET: Metabolic Equivalent of Energy.

### 3.3 How to play music.

Like the photo 1 showed, touch the button then will show photo 2. then you can choose to play music in watch locally, or from phone / TWS/ Speaker etc. You can choose whatever you want.



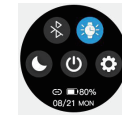
3.4 In the watch face page, finger touch from top and down can go to page like below.

Do not disturb: you can turn on or off do not disturb function.

Bluetooth call on/off: you can turn on or off the bluetooth call and bluetooth music play. .

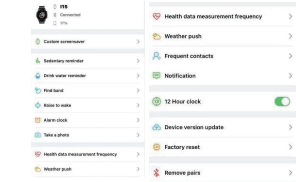
Brightness: you can adjust the brightness.

Setting: you can set the watch functions.



## 4 APP Other functions

Like the photos showed below, you can use the APP to define more functions, like custom your watch screen, sedentary reminder, drink water etc.



## 5 Parts introduction

Smart Watch \*1

Charging Cable \*1

Packaging \*1

User manual \*1

## 6 Warranty

6.1 If the smart watch has any quality problem in normal use due to issues attributable to the manufacturer, such as manufacturing, material or design, we will provide free warranty service of one year following its purchase date.

6.2 In any of the following circumstances, we will not provide free warranty service:

6.2.1 The smart watch fails due to unauthorized disassembling, assembling or refitting.

6.2.2 The smart watch fell in use and fails; or.

6.2.3 The smart watch fails or is damaged due to any artificial damage or any third - party mistake or misuse (such as water entry, cracking by any external force, or scratches on any peripheral component).

6.3 If the smart watch needs to be repaired, take it to us or any dealer of us. As for all of its functions, please refer to the smart watch you purchased.

# I15 说明书



## 1, 快速入门

- 1.1警告：智能手表可以监测实时动态心率，但不能用作任何医疗用途。
- 1.2设备要求：支持安卓5.1, IOS8.0 蓝牙4.0及以上版本。

## 2, 开箱以及第一次快速使用.



连接第1次： 打开 “WearFit Pro APP” ，“注册” 或者第三方登陆。“我的” ---“添加设备” -- “I15” - “配对” --“选择允许” --完成

连接第2次： 进入手机蓝牙--搜索并且选择Watch Call---- 配对--完成



## 第一次使用需注意:

- 2.1 使用前请用配备的充电夹，插入电脑USB或者充电座USB接口对手表进行充电，充电时间大约2小时。为保证充电接触良好，请保证金属触电无脏污，氧化和杂质。充电时，屏幕显示充电符号。如果设备长期不用，请务必保证每1个月充电一次。
- 2.2 当手表和APP首次配对连接好以后会同步手机的时间，日期，电量符号等信息。
- 2.3 如何开机：长按手表上面按键5秒开机。如果长时间未使用，或者第一次开箱电量低无法开机，请为手表充电再开机
- 2.4 如何关机：进入手表表盘界面，长按上面按键5秒进入关机选择界面，选择关机，手表关机并会震动提示。

## 3 手表功能界面介绍

- 3.1 表盘界面，在表盘界面长按，左右滑动可以选择5个表盘，显示日期，时间，星期等  
表盘自定义： 进入WearFit Pro APP -- 我的--点击I15---自定义表盘---选择+ 号---相册选择图片--完成---安装---完成并且手表表盘显示图片。

- 3.2 从表盘界面，往左右两边滑动可以进入二级菜单，描述如下。  
设置：进入可以打开设置，如语言选择，调整亮度等。

- 电话：进入可以访问通话记录，联系人，拨号键盘，SOS， 拨号设置。
- 心率：进入可以测试心率并且同步到APP。
- 天气：进入可以访问当日天气。
- 数据：点击进入可以获得手表计步信息和数据。
- 睡眠：记录最近睡眠信息，包含深睡，浅睡等。
- 音乐：可以控制手机/手表/TWS播放音乐，音乐从手表出来。可控制暂停，播放，上一首，下一首。手机本地播放等。
- 血压：点击进入血压测量并且同步到APP。
- 血氧：点击进入血氧测量并且同步到APP。
- 拍照：摇一摇拍照。
- 秒表：点击进入秒钟功能。
- 运动：进入可以选择13种运动模式。
- 梅脱：MET. 梅托指能量代谢当量，音译为梅脱，是以安静、坐位时的能量消耗为基础，表达各种活动时相对能量代谢水平的常用指标。国际通用的身体活动量衡量标准。

## 3.3 如何播放音乐

如下图1，点击会到图2界面。 这里可以选择播放手表音乐，手机音乐，或者耳机/TWS音乐等。出厂默认是手机音乐，便于接听电话。如果播放完手表音乐/蓝牙耳机，可以切回手机音乐，便于接听电话。



- 3.4 在表盘界面，由上往下滑动可以进入如下界面。  
勿扰模式：可以开启或者关闭勿扰模式。  
通话蓝牙开关：可以开启或者关闭通话蓝牙。  
常量模式：可以开启或者关闭长亮模式。  
设置：进入设置界面，设置手表功能。



## 4 APP 其他功能

如下图，可以设置不同的功能，比如自定义表盘，闹钟，久坐提醒，喝水提醒等。



## 5 部件介绍

- 手表 \*1
- 充电夹 \*1
- 包装盒 \*1
- 说明书 \*1

## 6 保修说明

- 6.1本产品在正常使用时，如果因制造，材料，设计等原因引起的产品质量问题，自购买之日起，一年内免费保修。
- 6.2因使用者个人原因造成的故障，不提供免费保修，如下：  
6.2.1擅自拆装，改装手表等造成的故障。  
6.2.2在使用过程中不慎跌落而造成的故障。  
6.2.3一切人为损坏或因第三者过失，误用（如：主机进水，外力震裂，外国部件刮痕的损坏等），不在保修范围内。
- 6.3用户维修产品时，请把产品拿到本公司或本公司经销点。产品所有功能以实物为主。