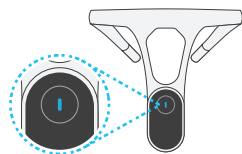


Instruction

Power on

Long press the button for 3 seconds for power on.

i In the power-on state, long press the button for 3 seconds for power off.



Bond devices

The browser scan the QR code on the right to download App. Bond your device according to the instructions.

i Please turn on Bluetooth and location before binding the device.



App Store



Google Play

Set up the correct posture

Wear the device, and set up the correct posture according to the instructions in App.

Set up the suitable angle and time lapse of the reminder.

Keep the correct posture

When having a wrong posture or sitting for a long time, the device will “vibrate” to remind you to be upright.

If you want to have a rest while using this device, you can double click the button to temporarily turn off the reminder mode for 30 minutes. Double click again to turn on the reminder mode.

Posture training

The App offers professional “posture training courses” and “exercise games”. Taking regular exercises every day can help strengthening weak muscles, which makes it easier to remain a good posture.

Vibration and indicator lights

The product keeps being updated, so please subject to the actual version.

Device Status	Vibrations	Indicator lights
Power on	1 long vibration	Fully charged: blue light be constant for 5 sec and then vibrates
		Low battery: red light
Power off	1 short vibration	*
Bluetooth pairing	2 short vibrations	*
Posture recording completed	2 short vibrations	blue light flash speed from fast to normal
Posture reminder	3 short vibrations with repetition	*
Long sitting reminder	3 long vibrations	*
Power ON/OFF charge	*	Charging: red light vibrates
		Charging completed: constant blue light
Vibration ON	1 short vibration	Purple light flashes once and then vibrates
Vibration OFF	2 short vibrations	Blue light flashes once and then vibrates
Short press the power button on Vibration OFF mode	*	Purple light flashes once
Short press the power button on Vibration ON mode	*	Blue light flashes once

Charging instruction

Charging

For charging the device, please push the back of it and remove it from the neck loop (as shown in images ① ②).

This device uses Type-C port for charging, and the power adapter should meet the following requirements:

Rated input: 5V = 1A

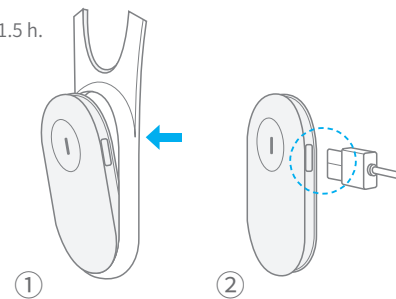
Charging period: around 1.5 h.

Charging:

red light vibrates

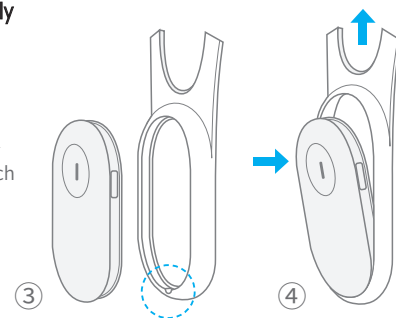
Charging completed:

constant **blue light**



Assembly and disassembly

Upon the completion of charging, please align the device to the dent of the neck loop (though the neck loop is elastic, please stretch it gently), and adjust the device to be vertical with the horizontal plane (as shown in images ③ ④).



Cleaning

Cleaning of the device

1. the device is not waterproof; if there is dust or stain on the device, please use clean and dry cloth or wrung wet cloth to wipe it.
2. While cleaning, please make sure the power is OFF, and unplug the power adapter.
3. Please do not use any detergent or cleaner. If there is stubborn stain, you can wipe it with disinfectants that contain alcohol or other volatile substances. Wait for the volatile substances to completely volatilize in a cool, shade environment, and then assemble the device.

Cleaning of the neck loop

1. The neck loop can be rinsed separately in water. after washing it, please dry it in a cool, shade environment before installing the equipment.
2. Please do not wipe with disinfectant containing volatile substances such as alcohol to avoid corrosion of accessories.

Reminder

1. This product is recommended to children and teenagers.
2. Please fully charge the device upon the first usage.
3. Please wear the device next to your skin, as clothes may cause inaccurate data.
4. While using the device, avoid sharp pieces from cutting the neck loop.
5. Please avoid unauthorized modification or maintenance. Please contact the After-sale Service Department for maintenance.

Tianjin Fruitech Technology Co.,Ltd

Address: Tianjin Huayuan Industrial Park, the 6th Haitai Development Street, Haitai Green Industrial Base G-1101-15 to G-1101-32
www.fruitech.cn
400-900-5115
300384

Storage

1. Storage requirements: temperature: $-10^{\circ}\text{C}\sim+55^{\circ}\text{C}$
relative humidity: $\leq 80\%\text{R.H.}$ non-condensing state
atmospheric pressure: $(70.0\sim 106.0)\text{kPa}$.
2. After cleaning, please completely dry the device, and store it in suitable environment.
3. If your device remains idle for a long time, please recharge it at regular basis to remain the battery life.
4. Please prevent the device from falling and damages.
5. Please avoid direct sunlight, and store this product in cool and corrosive gas-free environment, away from heating device and open fire.

Warranty Instructions

We warrants the included hardware product and accessories against defects in materials and workmanship for one year from the date of original retail purchase. We does not warrant against normal wear and tear,nor damage caused by accident or abuse(such as damages caused by improper use, improper storage or unauthorized dismantlement). To obtain service, please visit an Authorized Service Provider—available service options dependent on country in which service is requested and may be restricted to original country of sale.international shipping charges may apply depending on location.

If you submit a valid claim under this warranty, We will either repair,replace, or refund your hardware product at its own discretion.

Warranty benefits are in addition to rights provided under local consumer laws.You may be required to furnish proof of purchase details when making a claim under this warranty.

Product parameters

Product name: Smart Posture Corrector

Product model: P1

Product size:

(Adult) $137\times 167\times 32\text{mm}$ (Kids) $120\times 132\times 32\text{mm}$

Product weight: battery and neck loop included

(Adult) 60g (Kids) 51g

Power supply: internal power supply

Rated input: $5\text{V} \approx 1\text{A}$

Communication means:

low power consumption Bluetooth 4.1 and newer

CMIIT ID: 2020DP11849

Operating environment:

temperature: $-10^{\circ}\text{C}\sim+55^{\circ}\text{C}$

relative humidity: $\leq 80\%\text{R.H.}$ non-condensing state

atmospheric pressure: $(70.0\sim 106.0)\text{kPa}$.

Operating time: 90h

Charging time: around 1.5h

The logo for hiPee, featuring the word "hiPee" in a lowercase, blue, sans-serif font. The "i" and "P" are slightly larger than the other letters.