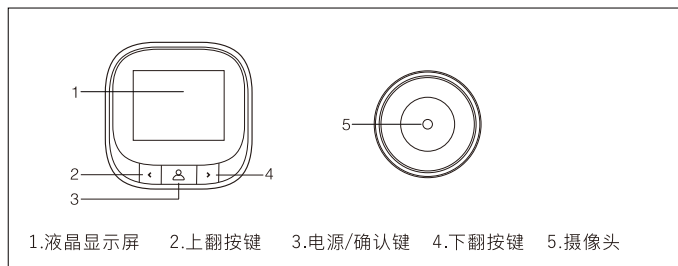


智能电子猫眼用户手册

感谢您购买我司生产的智能猫眼产品,为了帮助您正确的使用产品,请在使用前仔细阅读本手册。

一：产品外观图

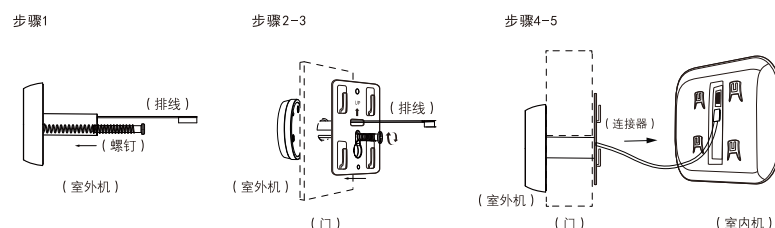


二：安装指南

- 步骤1: 根据门的厚度选择一根长度合适的螺钉拧入室外机的突杆内。
- 步骤2: 将室外机背部防滑垫上的离型纸撕下,将导杆和排线一起穿过门上猫眼孔并用力将室外机贴在门上(注意正确的方向,门铃按键在正下方)。
- 步骤3: 取出金属挂板(标有“UP”的一端朝正上方),将排线穿过挂板上小长方形孔,

将螺钉卡进挂板上的葫芦孔,拧紧螺钉至挂板和室外机被固定牢固。

- 步骤4: 将排线扣接到室内机背面的连接器母座上。
- 步骤5: 将室内机背面的4个槽对准金属挂板上的4个挂钩并下拉至锁紧状态。



三：功能说明

- 1.按电源键开机,开机状态再次按电源键可以进行拍照,长按电源键3秒关机。
- 2.开机状态,短按上翻键/下翻键进入照片浏览,再次短按上翻键/下翻键按顺序浏览照片。

- 4.开机状态,长按上翻键,删除所有访客记录。
- 5.开机状态,长按下翻键,设置自动关机时间:15秒、25秒、常亮。
- 6.在浏览照片时,长按上翻键,选择删除所有访客记录。
- 7.在图片浏览时,长按下翻键,选择删除单张访客记录。

四：产品参数

屏幕尺寸	2.4英寸	材质	ABS工程塑料
屏幕分辨率	320*240	可视角度	90°
存储方式	自带内存,循环存储	适合门孔直径	14-28mm
电池	600mAh 不可拆卸	适合门厚度	35-120mm
摄像头	30万像素	产品尺寸	室内机: 80*80*16mm 室外机: φ32*7mm

五：产品配件

室内机*1	室外机*1	金属支架*1
说明书*1	螺丝*3	

六：安全注意事项

- 1.非专业人士请勿拆机;
 - 2.请勿将本产品在高温、潮湿、盐雾等恶劣环境下使用或存储;
 - 3.安装过程中小心操作;不要用力拉扯室外机连接线,防止连接线刮伤、断裂;
 - 4.请使用标准规格的充电器,防止充电器导致无法充电或者设备损坏;
- 整机质保1年
图片仅供参考,以实物为准,生产商保留对产品外观及功能进行改进和升级的权利,恕不另行通知。

- 4 -

Quality warranty: one year.
Picture is just for reference, good in kind prevail, manufacturer reserve the right to improve the appearance and functionality and upgrades without notice.
1. Do not use this product in high temperature/humidity/salt.
2. Do not use this product in high temperature/humidity/salt.
3. Please make sure never to pull the cable fiercely in case to break it.
4. Please use standard model battery. Poor quality battery may lead to the product damaged or can not be powered on.

Safety Precaution

Indoor part *1	outdoor part *1	metal Bracket *1
User manual *1	Screws *3	

Products Accessories

- 3 -

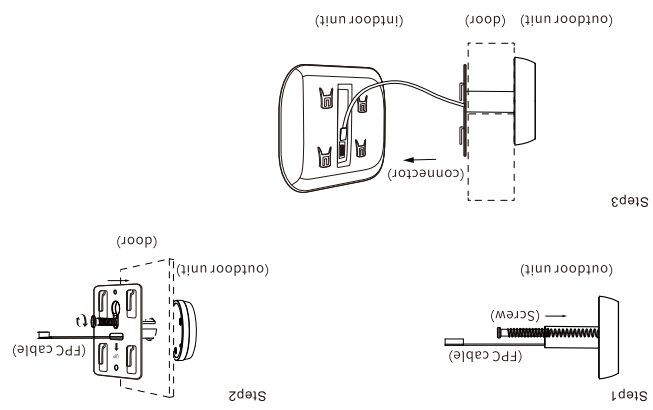
Camera	0.3 MP	Door thickness	35-120mm
Battery	600mAh	Door hole Diameter	14-28mm
Memory	Built-in cyclic storage in device	Product Size	Indoor part: 80*80*16mm Outdoor part: φ32*7mm
Resolution	320*240	Vision angle	90°
LCD screen	2.4 inch	Material	ABS plastic

Technical Specifications

1. Power on/off: when pressing power key, the indoor part will power on, keep on pressing power key for 3 seconds, the device will power off.
2. Review photo: in power on mode, press "left key" or "right key" to review photos.
3. Delete all photos: in power on mode or when reviewing photos, press "left key" for three seconds to delete all photos in memory.
4. Delete single photo: when reviewing photos, press "right key" for three seconds to delete one photo in memory.
5. Set power off time: in power on mode, press "right key" for three seconds to select the power off time: 15s/25s/off.

Function Operations

- 2 -

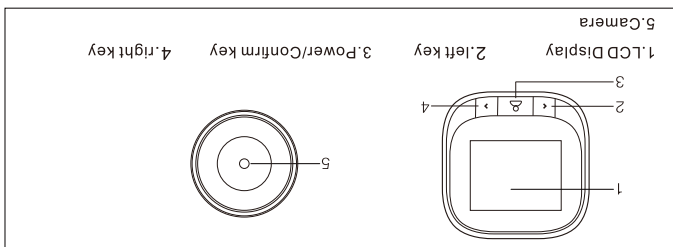


step 4: The four slots on the back of indoor unit is aligned with four hooks on the metal bracket and buckle up, then pull down indoor unit to lock tightly.

- 1 -

step 1: According to the door thickness to choose a suitable bolt, then screw the bolt into the screw hole on the barrel of outdoor unit.
step 2: Insert the barrel together with the FPC through the door peephole, then hold the outdoor part on the door in right direction.
step 3: Take out the metal bracket (the "UP" arrow on the bracket means upward), past the FPC through the rectangular hole, pass the screw through the round hole of the metal bracket, then screw the bolt to lock the metal bracket with outdoor part tightly.

Installation Instruction



The product frame

Thanks for purchasing the digital door viewer from us, in order to help you using the product in right way, please read this manual carefully before using it.

Digital Door Viewer User's Manual

- 4 -