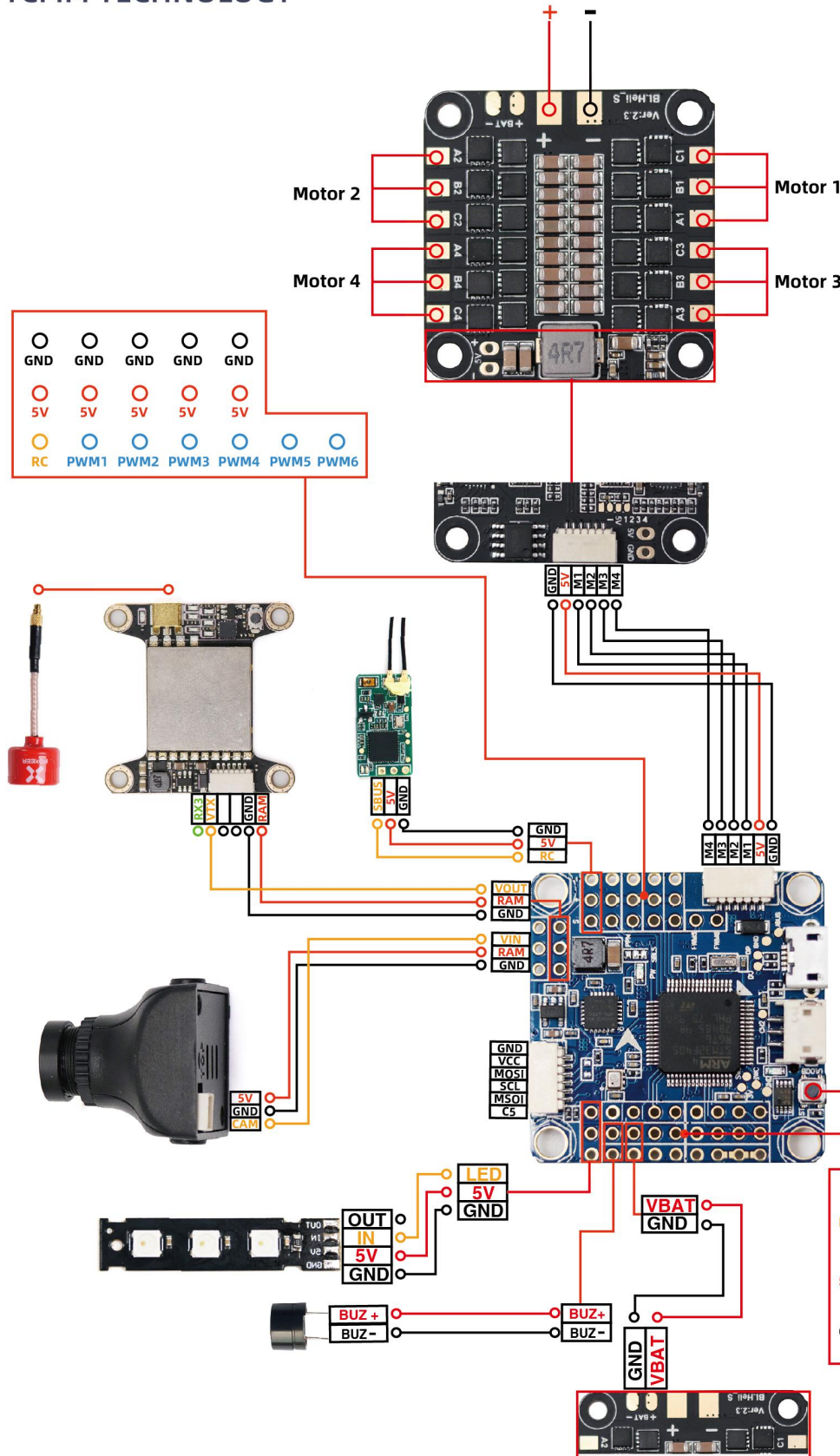


F4-30A Stack

Name: F402D
MCU: STM32F405
Gyro: MPU6000
BEC: 5V 2A
Input voltage: 2-5 S Lipo
Support Receiver: PPM,Ibus,Sbus,Dsmx
Black box: YES
Barometer: YES
Firmware: Omnibus F4 SD
Buzzer interface: YES
Betaflight OSD: AT7456E
PCB Size: 35.5*36 mm
Mounting Hole: M3*30.5*30.5 mm

Name: E302D
Constant current: 30A
Peak current: 40A (10S)
Input voltage: 2-5 S Lipo
MCU: EFM8BB21F16G (48MHz)
Mounting Hole: M3*30.5*30.5 mm
MOS Tube: Toshiba 3x3
BEC output: 5V 2A
Firmware: BL_S
Protocol: DSHOT 150
PCB Size: 37*37 mm
Mounting Hole: M3*30.5*30.5 mm



LED	GND	5V	SCL	SDA	GND	5V	CH4	CH6
5V	BUZZ+	VBAT	CRNT	RSSI	GND	5V	RX6	TX6
GND	BUZZ-	GND	GND	GND	GND	5V	TX1	RX1
							RAM	VBAT

- ① RAM-5V
- ② RAM-VBAT

Note: Be sure to weld the receiver protocol selection pad

了解产品详细信息, 请访问tcmm官方网站
 For product details, please visit the official website of TCMM
<http://www.tcmm-rc.com>
 QQ: 1585921319
 WhatsApp: +86 15323773561
 Email: tcmmrc@tcmm-rc.cn



facebook IG WeChat