

Battery capacity / DC power multi-function tester 2.4-inch high-definition wide color screen Bluetooth digital transmission curve version

File Download Way

1, User manual, PC software installation instruction and PC software and Android APP download link : <https://www.mediafire.com/folder/hvnf1jkyu70km/DT24>

2, IOS APP: search E_test on iphone APP store to download 3. Android APP: search E-test at Google play to down load



DT24/7-380V/0-30A

DC Capacitor battery capacity percentage tester



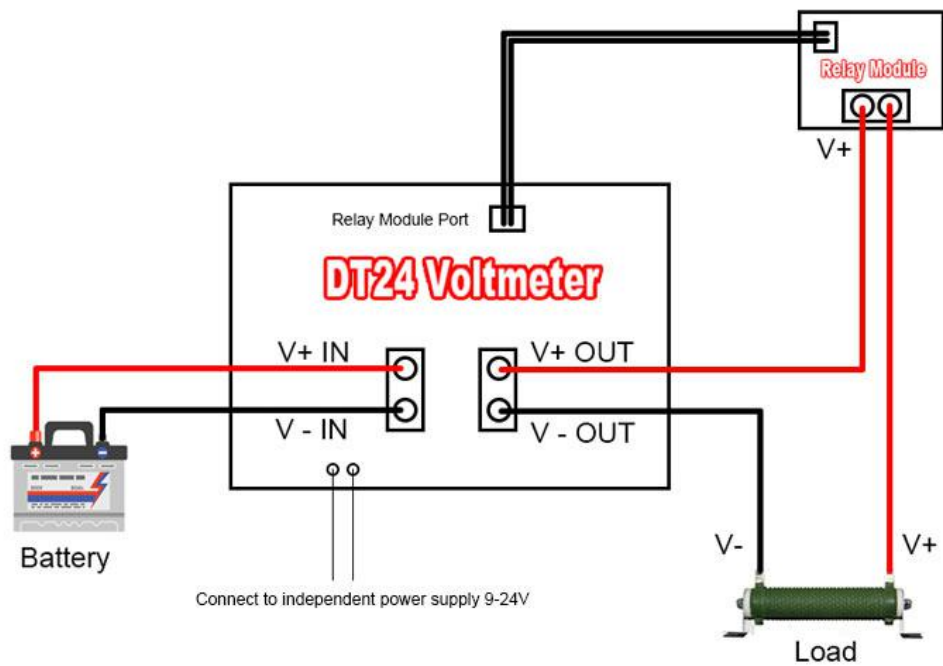


DT24 Voltmeter +Relay Module



Relay Module



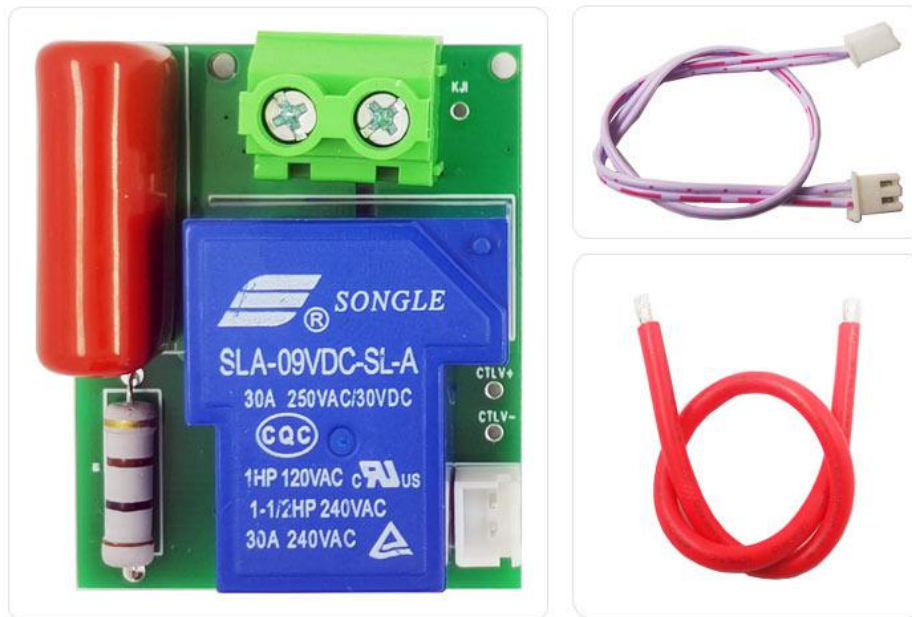


Note:

1. The relay must be connected to 9-24V independent power supply
2. 4-30V can supply power without relay

Relay Module

Relay function: Once the voltage value lower than the low value or higher than the full value, the test is automatically cut off to protect the product



Product use: This product is used to test the capacity of various batteries, discharge and age various power adapters, and detect the voltage, current, and other parameters of various DC power supplies. Product Size: Installation size: length 76mm X width 53mm Panel size: length 85.7mm X width 63mm Electrical parameters: Voltage measurement range under test voltage power supply mode: 7 ~ 380V Voltage measurement range in independent voltage supply mode: 0 ~ 380V Measuring power range: 0 ~ 11400 W (0 ~ 11.4 kW) Measuring current range: 0 ~ 30A Reminder: If you enable the external power-off relay, please be sure to supply the system with independent power supply 5V /> 1A power supply to avoid the failure of the relay control current and system instability

Battery Percentage Display

More than 30% Green Display



Less than 30% Yellow Display



Less than 10% Red Display



Compatible with the current mainstream four online APPs

(Android/IOS/PC system) online testing



IOS App



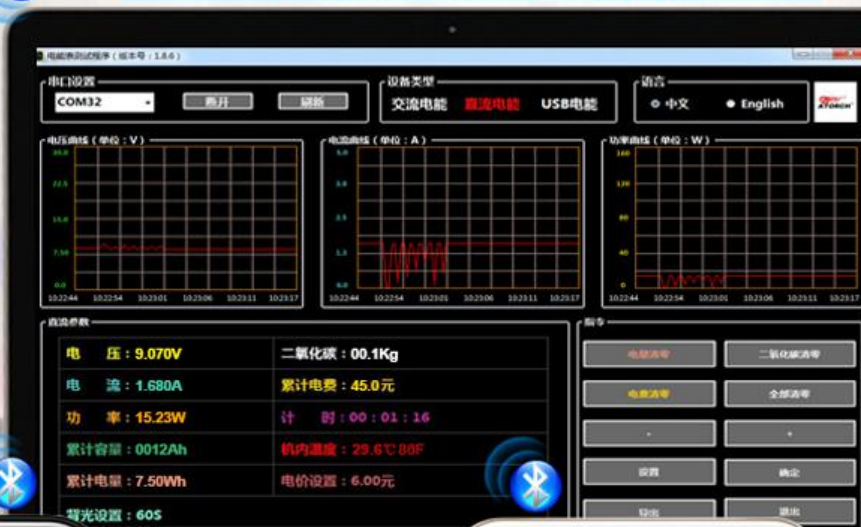
Android App



PC Computer App

PC computer online software

DT24 HD color screen voltmeter



苹果 APP

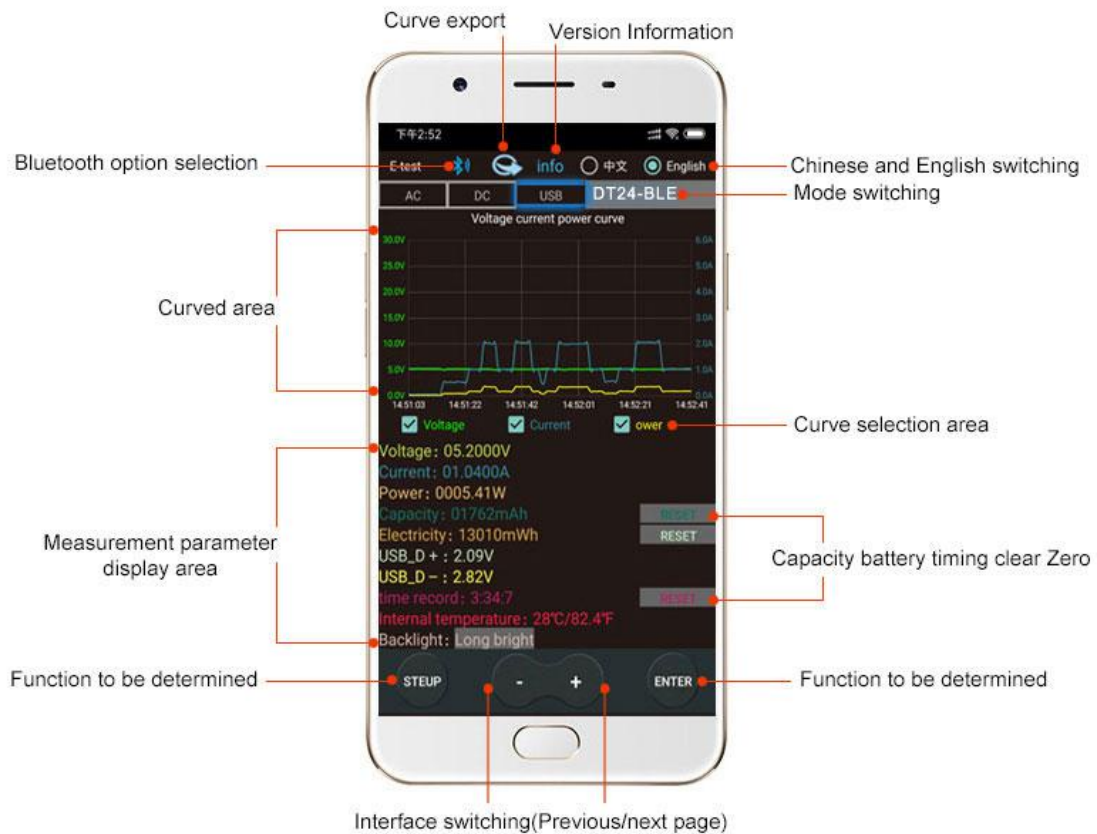


安卓 APP

Mobile APP interface function introduction

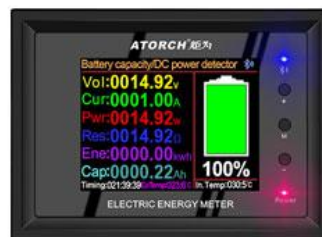
Use the mobile phone Bluetooth function to wirelessly connect the product, with the included mobile APP software. Achieve more measurement and control details, leaving measurement technology without boundaries

We have adopted the bluetooth CSR4.1, compatible with 4 g networks, using more advanced technology of bluetooth 4.1, improved the old bluetooth protocol and 4 g networks interfere with each other. New bluetooth 4.1 technology have automatic noise reduction function, and make the bluetooth headset can connect two phones at the same time. And bluetooth CSR4.1 g: top, stable performance, good compatibility, low power consumption is more save electricity



DT24 Color Voltmeter Wireless Bluetooth Online Operation Diagram

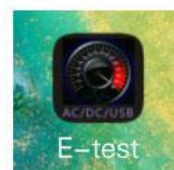
1. Plug **DT24 Voltmeter** into the USB charger and the Bluetooth indicator will light up.



2. Please download the mobile app software, only support Android 5.0 and above.

<https://www.mediafire.com/folder/31bc15uhq8odb/E-meter>

Then install the E-meter APP software on the phone.



3. Bluetooth on the phone needs to be turned on, Then open E-test APP on the phone



1

When the USB tester is powered on, the Bluetooth indicator is flashing, turn on the E-test App software icon, and allow Bluetooth to turn on.



2

Click the Bluetooth icon in the upper left corner of the APP to pop up the menu for selecting the USB tester model, **DT24-BLE** and return to the main APP interface.



3

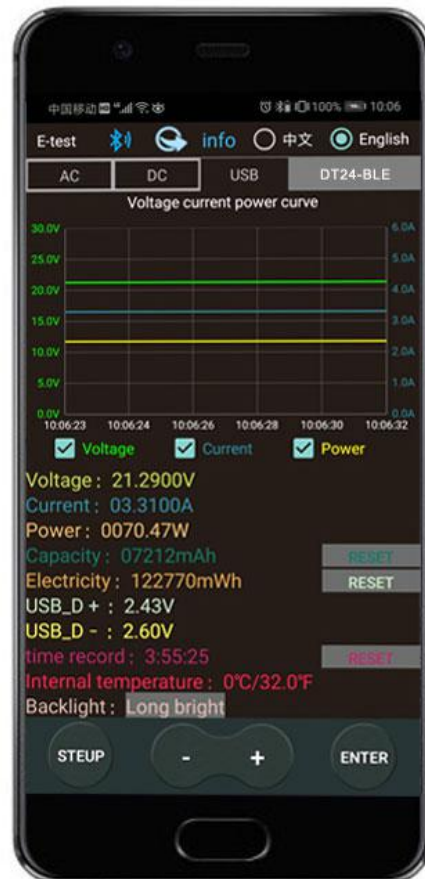
During the measurement, the upper right corner shows the model currently online. **DT24-BLE**. The bluetooth icon in the upper left corner turns blue, indicating that the measurement is in online communication.



iPhone APP



Android APP

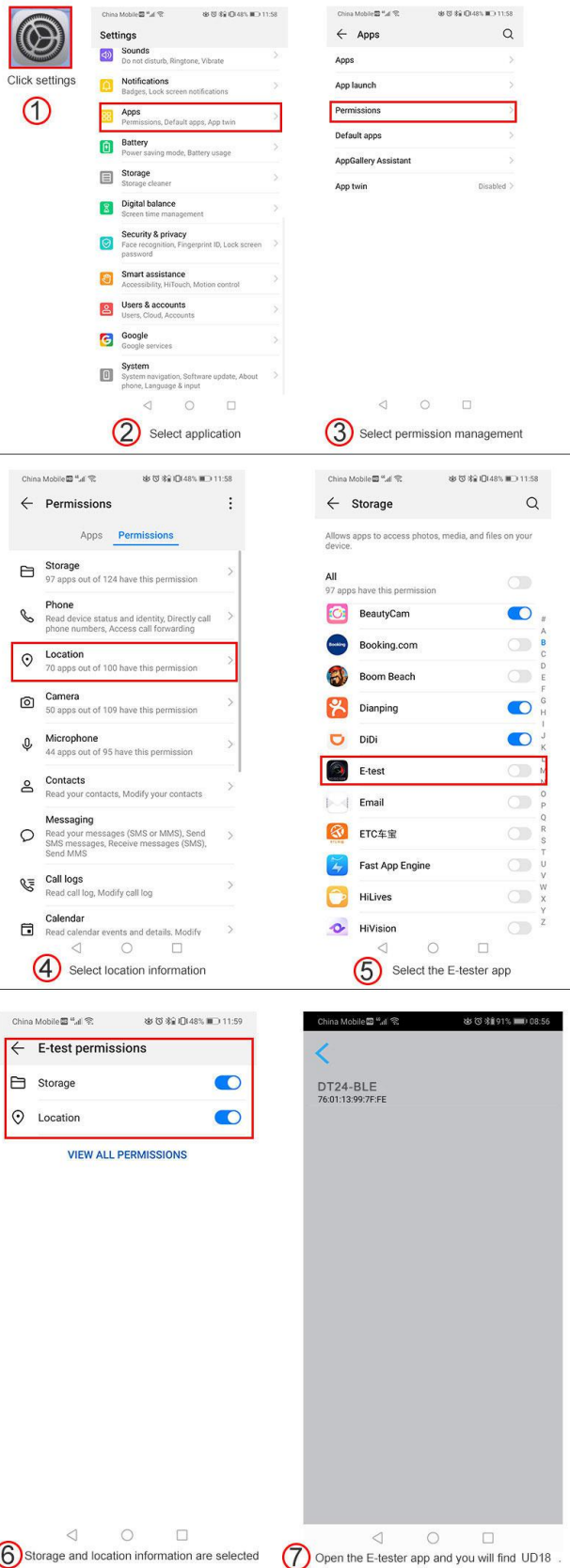


1. New addition iPhone App, In the Apple Store, search for: **E_Test**, Click Download to install it.
2. Android APP: <http://www.mediafire.com/folder/31bc15uhq8odb/E-meter>

FAQ:

How to find Bluetooth symbols on some phones?

Please open your phone, set up, find the app, manage the permissions, find our app (**E-tester**), open the permissions, open the storage and location information, you can find **DT24-BLE**





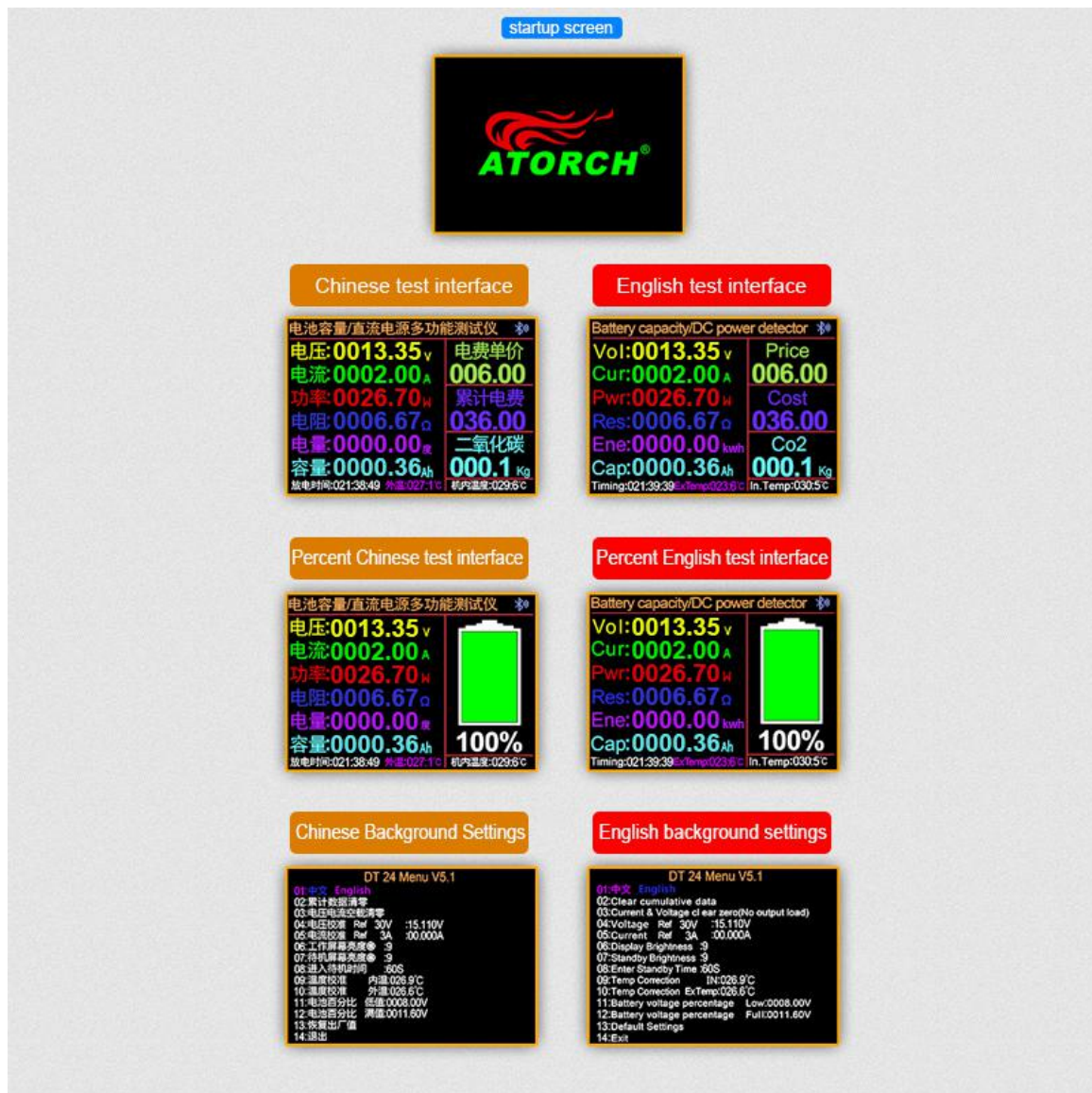
Voltage accuracy evaluation



Current accuracy evaluation



7 in 1 Large Screen 2.4 Inch HD Wide Color Screen Interface Design



Technical parameters and wiring methods



- Bluetooth Indicator
- Value + Key Button
Short press to switch interface, long press continuously increase
- Setting Buttons
Short press electricity price Set up
Long press background settings
- Value - Key Button
Short press the button to switch the interface, long press the button to decrease continuously
- Power Indicator



Relay Module

Relay function: Once the voltage value lower than the low value or higher than the full value, the test is automatically cut off to protect the product

