

Quanum Brushless Motor

Brand Name: Quanum

Item Name: D3536 Motor

KV : 910KV/1000KV/1250KV/1450KV

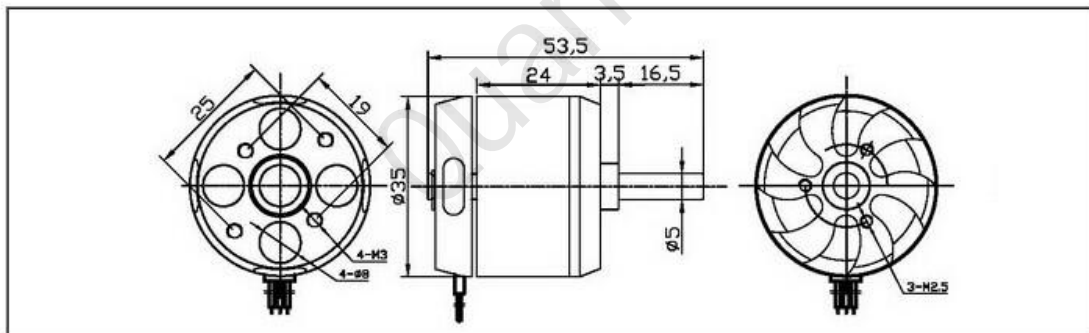
Motor Dimensions(Dia.*Len): $\Phi 35 \times 36 \text{mm}$

Weight (g): 102g

No.of Cells(Lipo): 2- 4S

Pull: 470g/480g/500g/655g

Recommended ESC : 50A



Order No.	Model	Motor size	Shaft size	Weight	KV (rpm/v)	Power	Battery	Prop	Ri(M Ω)	ESC
281405	D3536-05	$\Phi 35 \times 36 \text{mm}$	$\Phi 5.0 \times 53.5 \text{mm}$	102g	1450W	655	2-4Li-Po	9x6/8x4	0.023	50A
281406	D3536-06				1250W	500		10x4.7/9x4.5	0.034	
281408	D3536-08				1000W	480		11x5.5/10x6	0.052	
281409	D3536-09				910W	470		12x5/10x7	0.063	
281411	D3536-11				350W	750		13x8/11x7	0.094	