

Sinilink XY-E30H 2.1 Channel Bluetooth audio power amplifier module Bass 15W*2+30W



contents

Sinilink XY-E30H 2.1 Channel Bluetooth audio power amplifier module Bass 15W*2+30W ..1	
contents	1
1.Volume knob design	3

2.Introduction of keys and main functions.....4

3.Naked plate structure5

4.Set the Bluetooth name anywhere.....6

5.Set the private password.....7

6.New upgrade to the Bluetooth system.....8

7.Product parameter table.....9

8.Product installation structure 10

9.Modify the Bluetooth name considerations..... 11

10.Bluetooth password setting steps 12

11.How to connect your phone Bluetooth..... 13

12. How to connect your phone APP 14

13.How to download your phone APP..... 16



1. Volume knob design

Function
Introduction

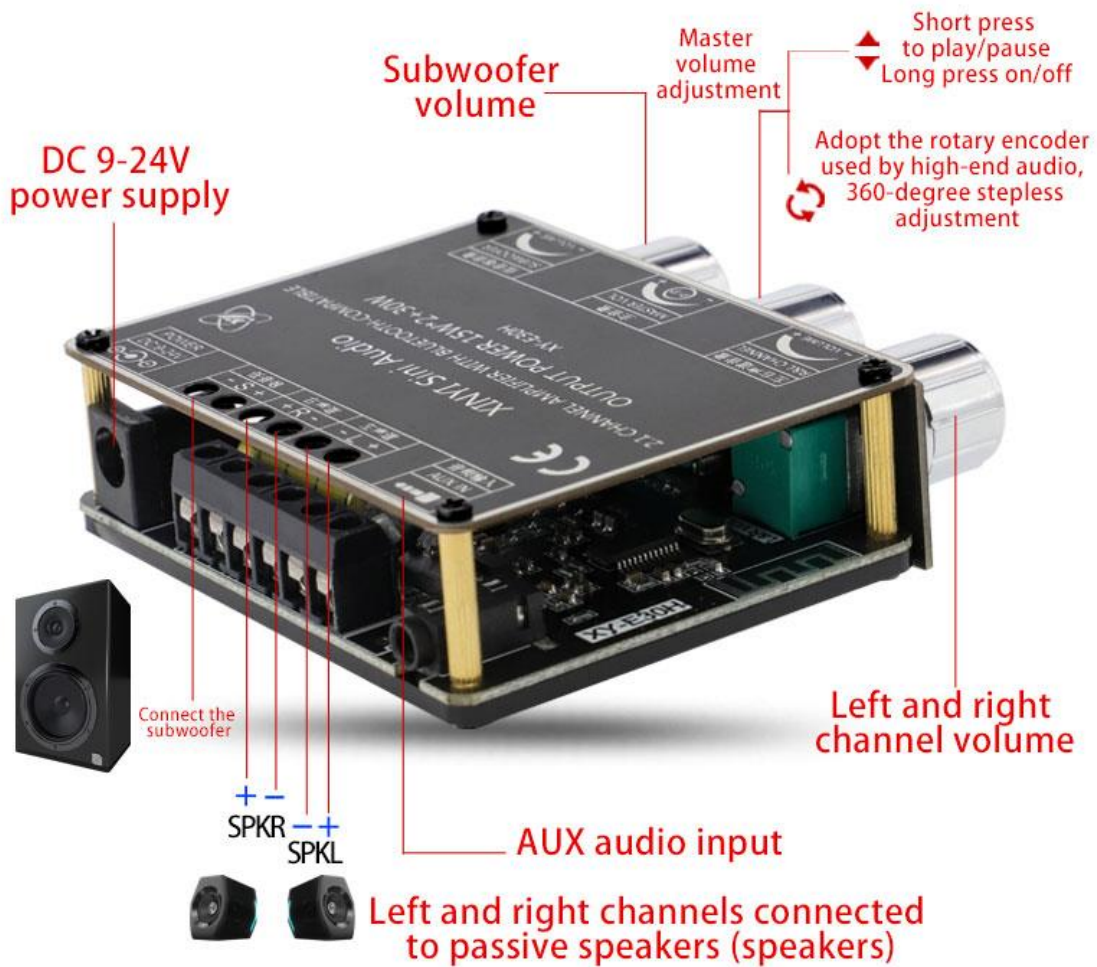
Volume knob design



The main knob adopts the rotary encoder used by the high-end power amplifier
Achieve 360-degree stepless tuning and feel smooth
One key to start and stop, long press to switch the machine,
the operation is simple and convenient

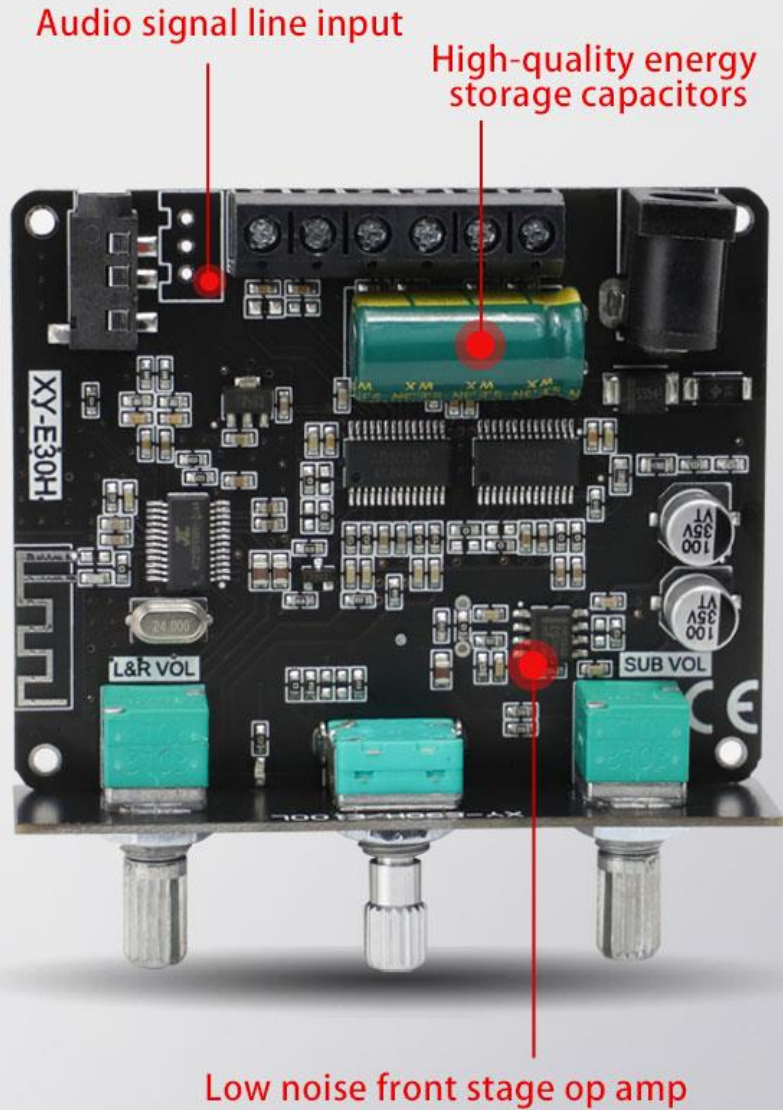
2.Introduction of keys and main functions

Introduction of buttons and main functions



3.Naked plate structure

Bare board structure display



4. Set the Bluetooth name anywhere

Set the Bluetooth name of each product arbitrarily
Easy identification of multiple products



Bluetooth power amplifier 1



Bluetooth power amplifier 3



Bluetooth power amplifier 2



Bluetooth power amplifier 4

6.New upgrade to the Bluetooth system

APP sinilink support Android IOS

New upgrade of Bluetooth system Modify Bluetooth name Set connection password

Turn off/on the beep

Play mode

Sound effect

Beep open close

Volume adjustment

Previous song

play / Pause

next song

Bluetooth password On /off

Set Bluetooth name

Set Bluetooth password

7.Product parameter table

product information



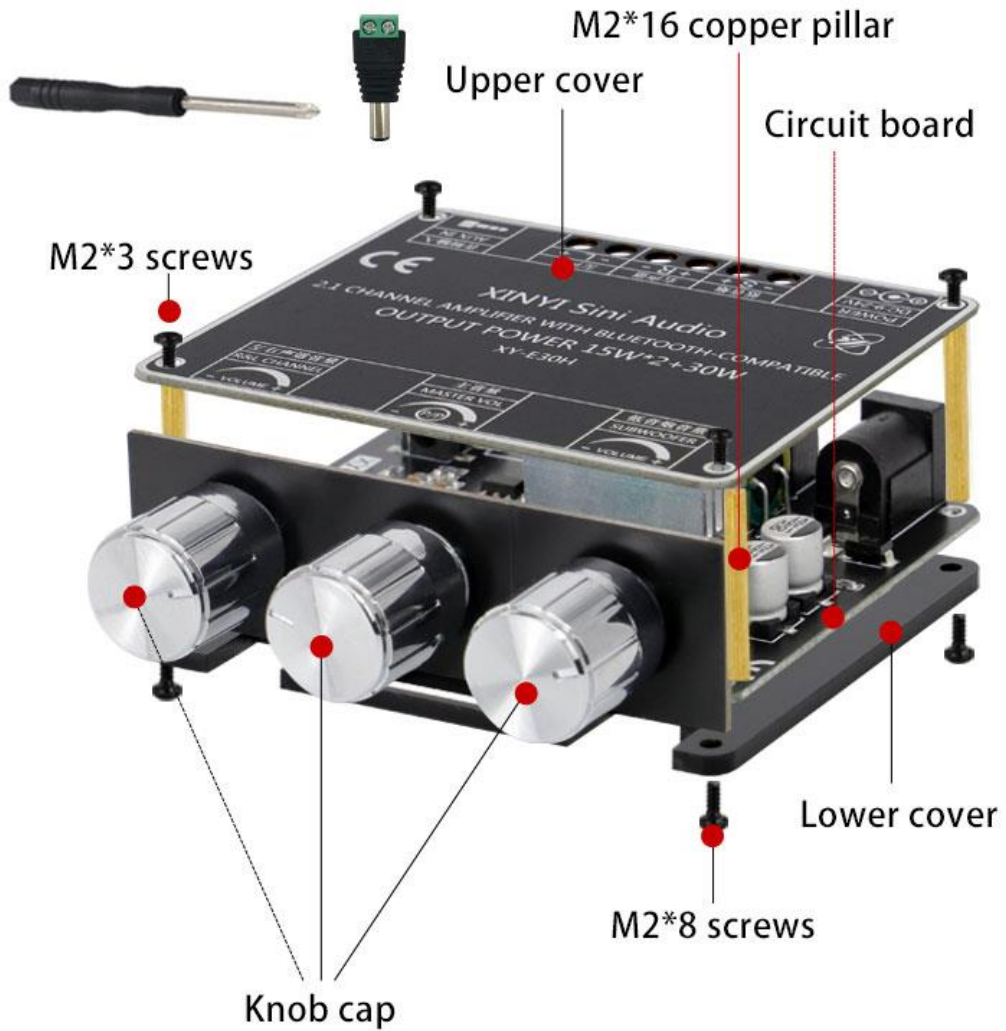
Product number	Product name	
XY-E30H	2.1 channel bluetooth power amplifier board	
Power supply	Bluetooth version	Audio channel
DC9-24V/3A more	5.1	2.1
Audio input	Audio output	
Bluetooth +AUX	Left and right channels + subwoofer	
Volume adjustment	Frequency Range	
High-end encoder knob adjustment	20HZ--30KHZ	
Signal-to-noise ratio	Output Power	
92dB	15W*2(Left and right channels)+30W(bass)	
Satellite box (left and right channel) adapted speakers		
5W--30W/4Ω--16Ω		
Subwoofer (subwoofer) adapted speakers		
5W--50W/4Ω--8Ω		
protection mechanism		
Static electricity, overcurrent, short circuit, overheating protection		
Unique function		
Support Sinilink-APP, modify the Bluetooth name, set the Bluetooth password, turn off/on the prompt tone		
weight	Dimensions	
67g	70*73*20mm	

Note: The impedance of the adapted speaker is 4 ohms, and the power supply cannot exceed 12V; the impedance of the adapted speaker is 8 ohms, and the power supply cannot exceed 24V.

8.Product installation structure

Installation structure display

Free screwdriver and DC adapter



9. Modify the Bluetooth name considerations

Precautions for modifying the Bluetooth name

1. Enter the name you want to modify in the Bluetooth name text box and click Settings (limited to 10 characters)

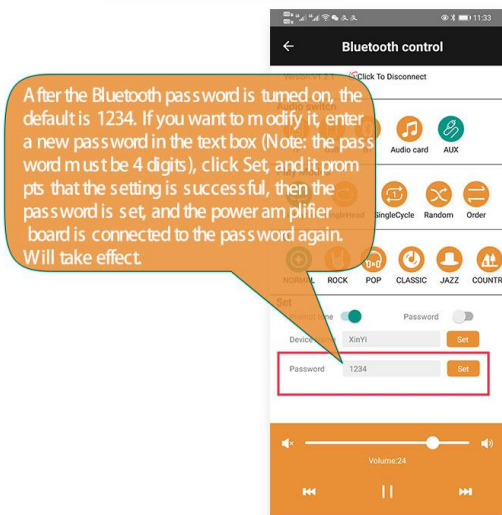
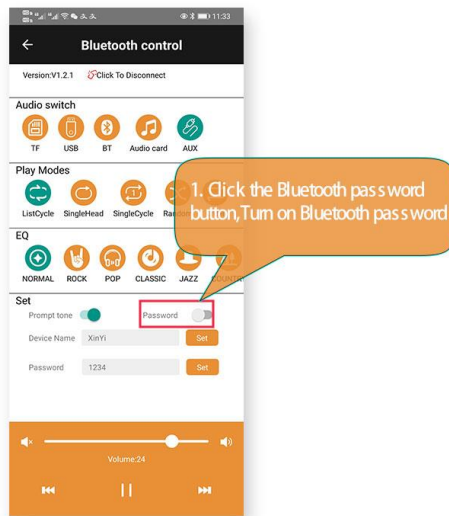
2. After the setting is successful, go to the phone settings -> Bluetooth to find the currently paired Bluetooth name

3. Then, click the setting icon behind the Bluetooth name to enter the setting page, and click Unpair

4. Finally, power on the Bluetooth power amplifier board again, search in the phone settings -Bluetooth, the modified Bluetooth device name will appear, just connect

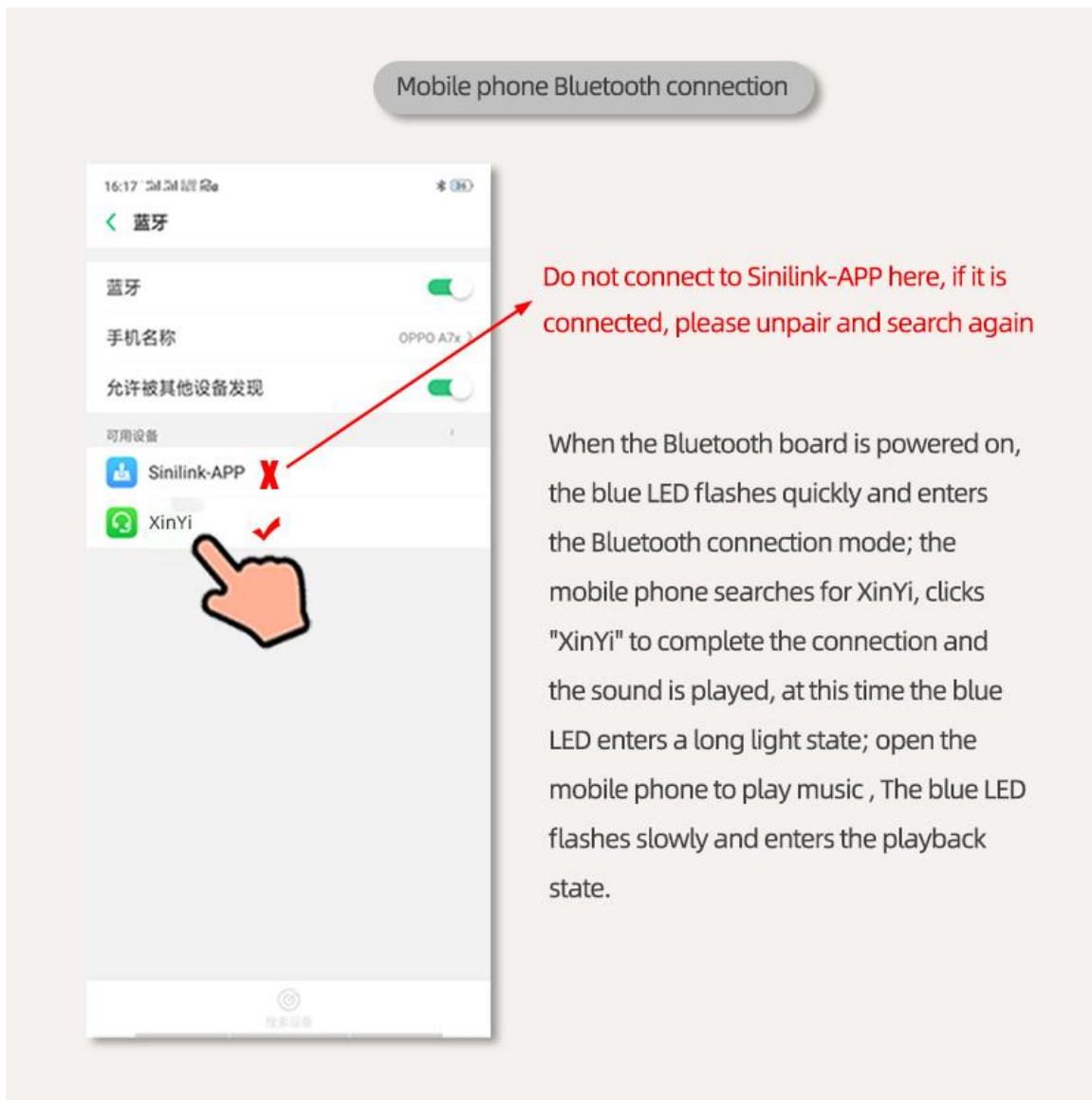
10. Bluetooth password setting steps

Steps to set up Bluetooth password



Note: The mobile phone system will memorize the paired Bluetooth devices. After restarting the power amplifier board, it will directly connect to the Bluetooth; only to cancel the pairing and re-search for the connection to the Bluetooth will it ask for the pairing password.

11.How to connect your phone Bluetooth



Make sure that Bluetooth into Bluetooth connection mode- - -blue LED flash, AUX do not insert, insert can not enter the Bluetooth connection state

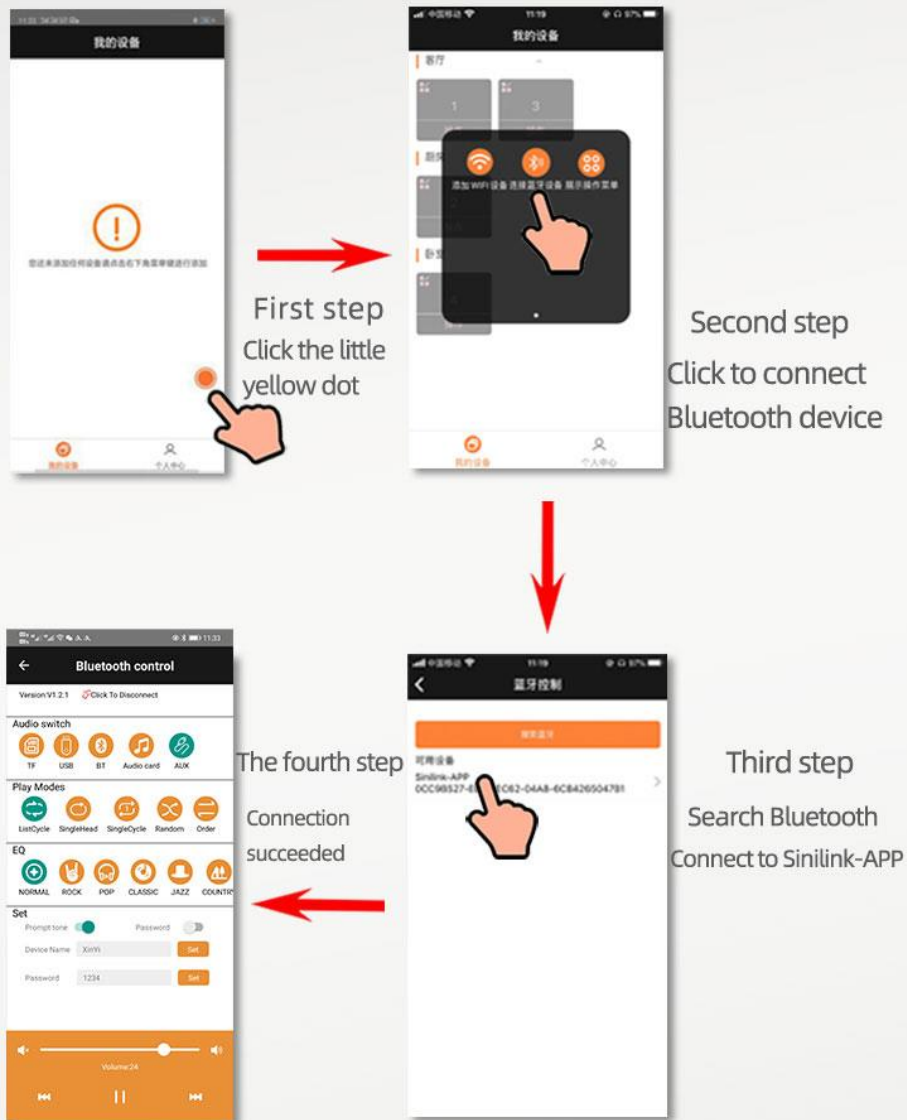
Mobile phone search for Bluetooth, find the "XINYI", click to complete the connection, accompanied by the prompt sound. After the successful connection, the LED enters the long beam state, open the mobile phone music software to play music, blue LED slow flash, and enter the playing state;

When the phone searches for Bluetooth, come out, "Sinilink-APP", don't connect this Bluetooth here, this is connected in the APP. If connected, please cancel the pairing, and search again, otherwise it will cause no connection in the phone APP.

12. How to connect your phone APP

Steps to connect Bluetooth via mobile APP

Note: When using the APP, you must turn on all the APP permissions in the phone settings, otherwise some phones, compatibility issues will occur, causing Bluetooth to fail to connect.



Turn on the location information of the phone when using the APP



13.

13.How to download your phone APP

扫码下载APP



Scan Download APP

Scan the code to download the APP, foreign customers please download in the Google market, search for 'sinilink' download