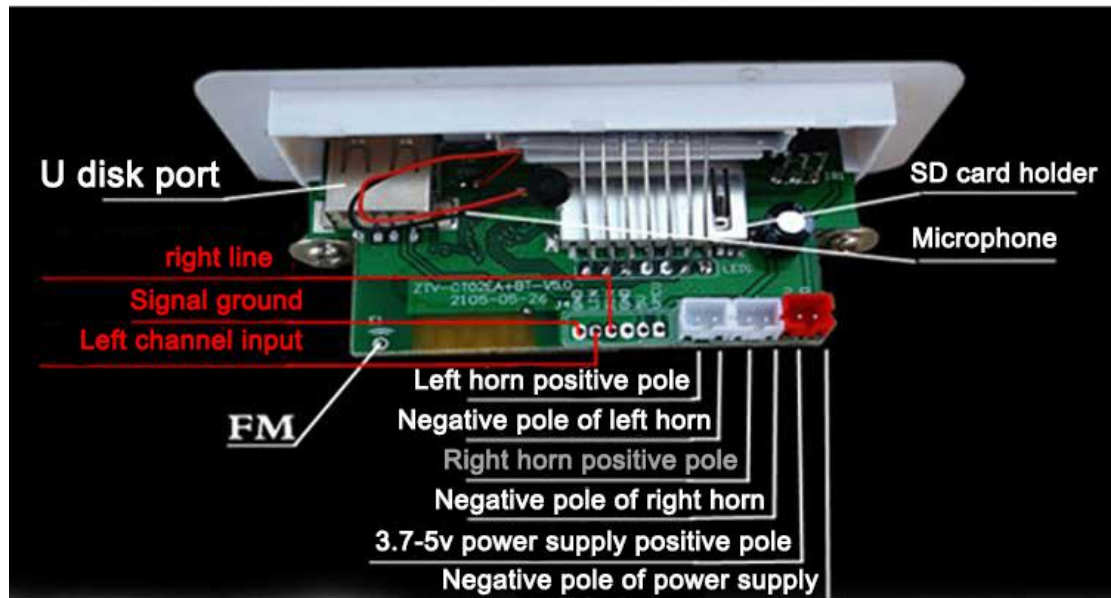
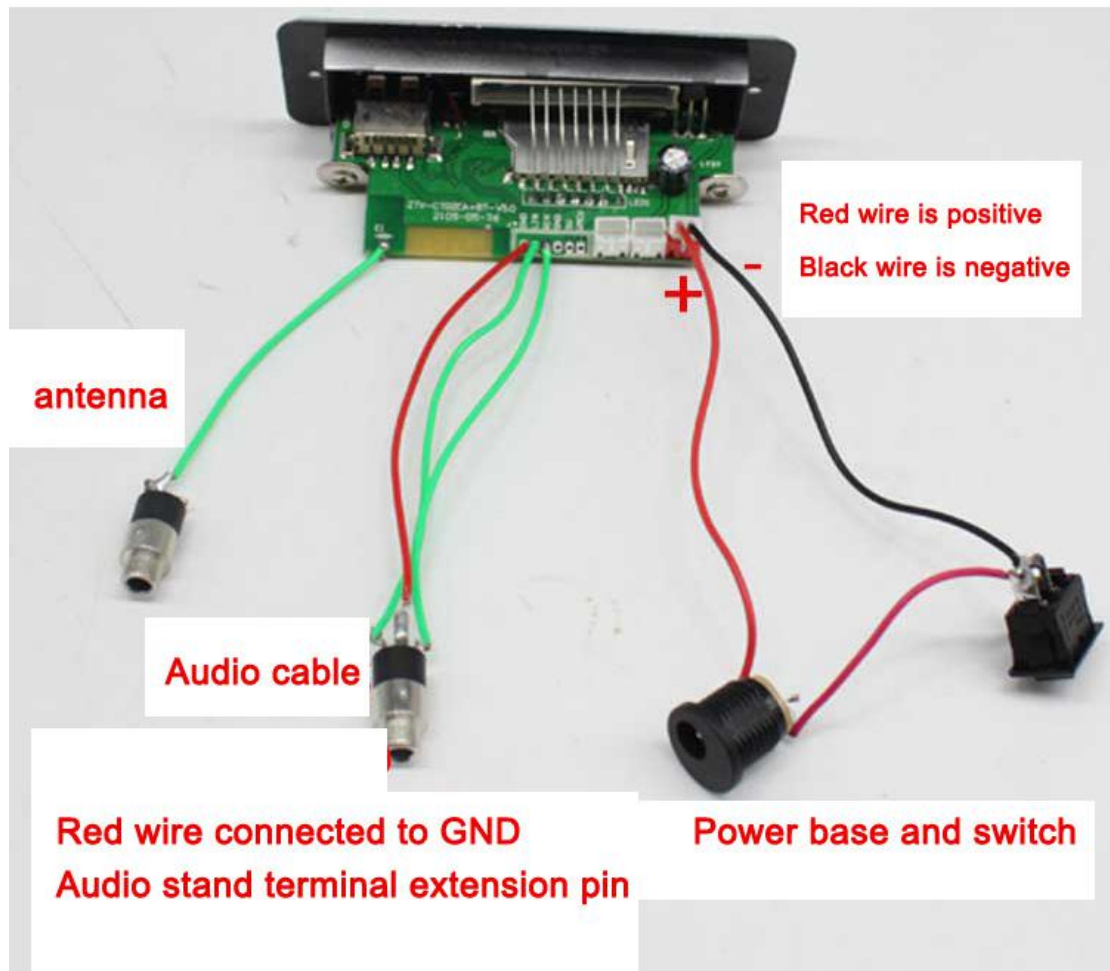


Installation manual of multifunctional wireless Bluetooth audio

Bluetooth reception, hands-free phone,
forward and backward, MP3 player,
aux function and radio function



Welding of audio cable and antenna power base



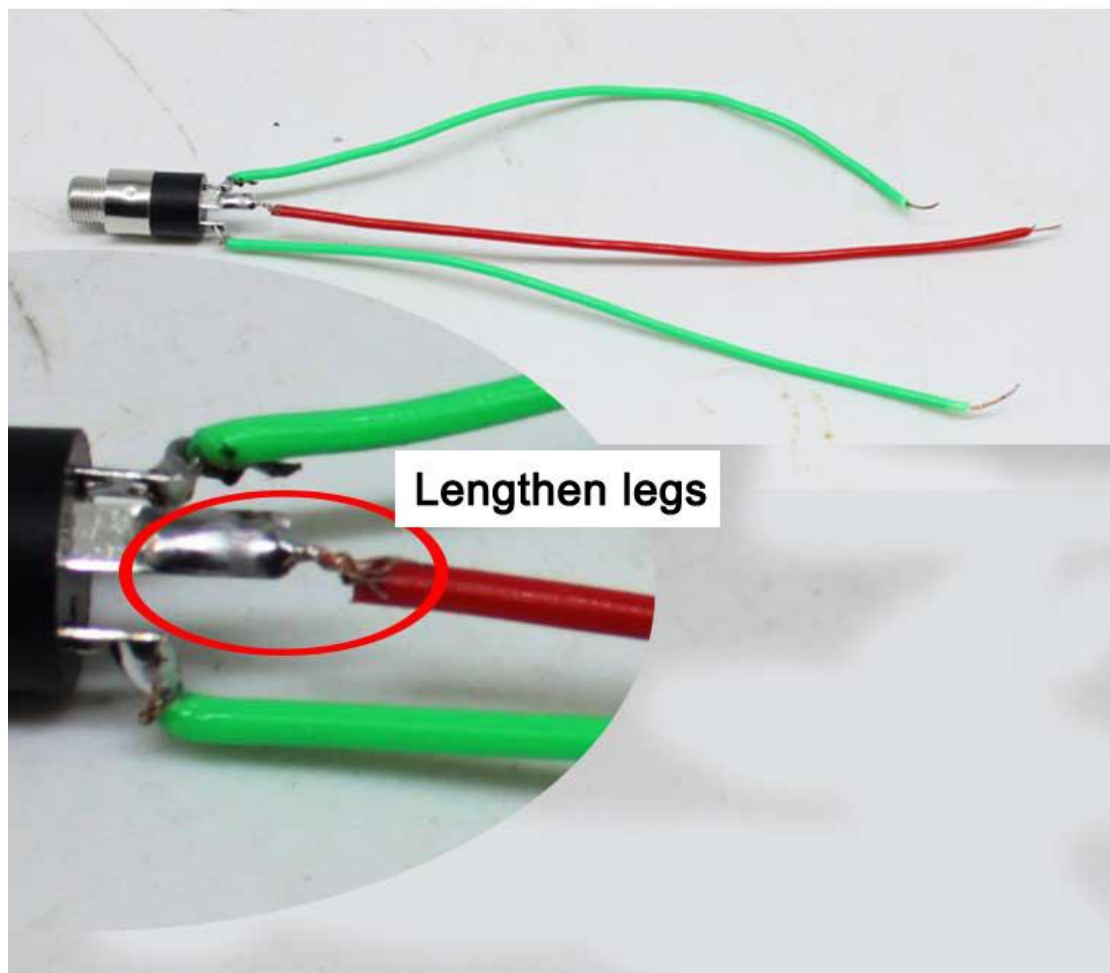
Wiring method of antenna

Only need to connect the longest pin to the terminal

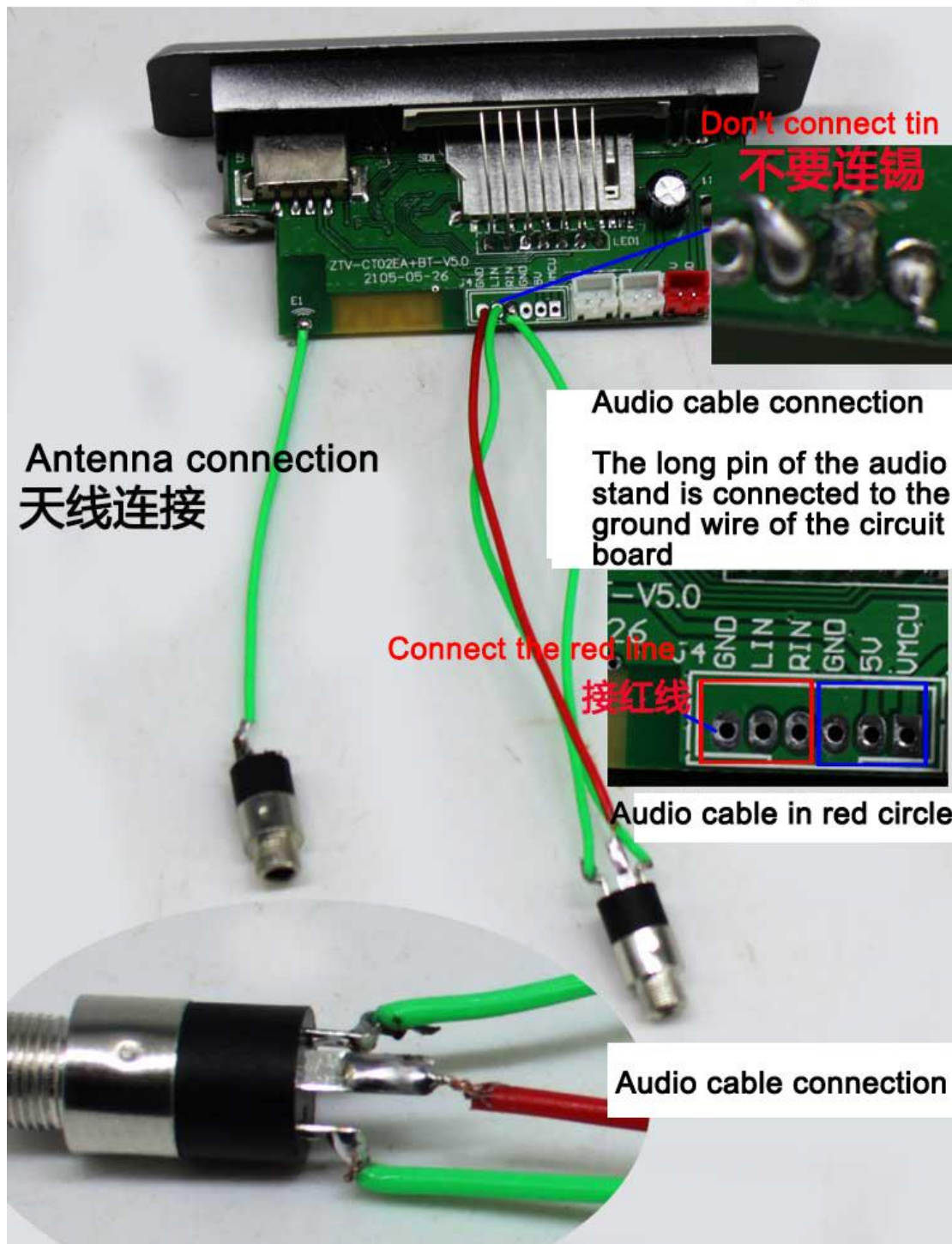


Audio cable connection method

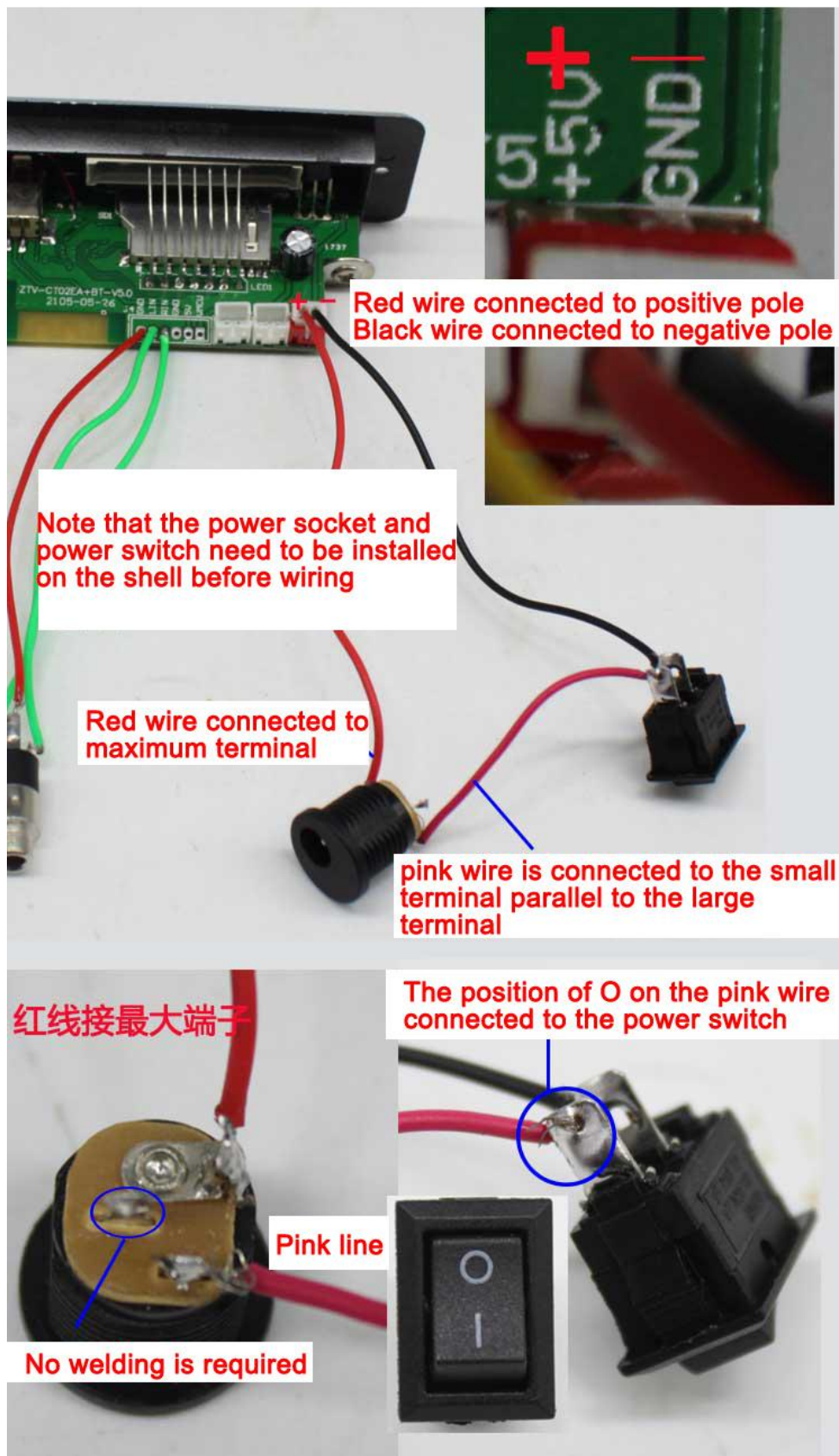
The red line extension pin is also a ground wire, and the other two lines are optional



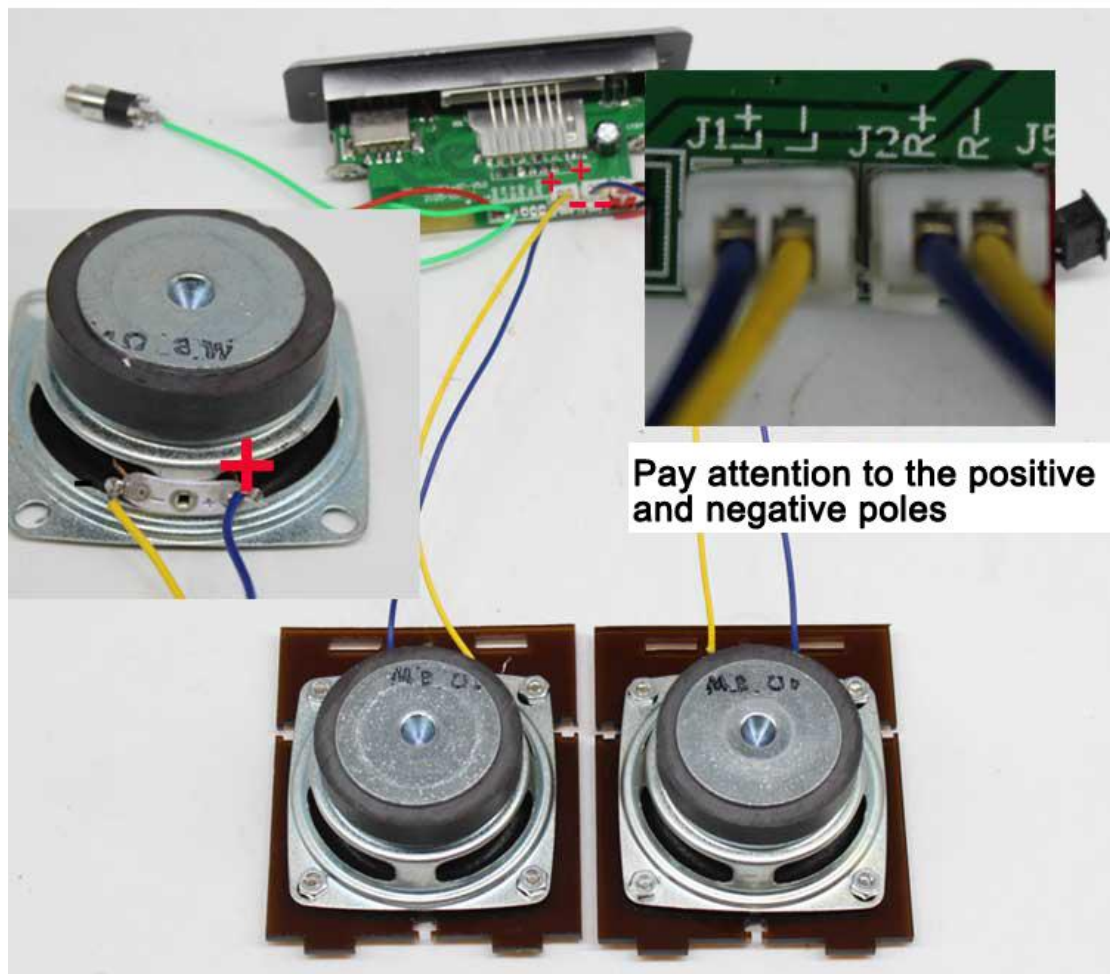
Audio cable connection circuit board display



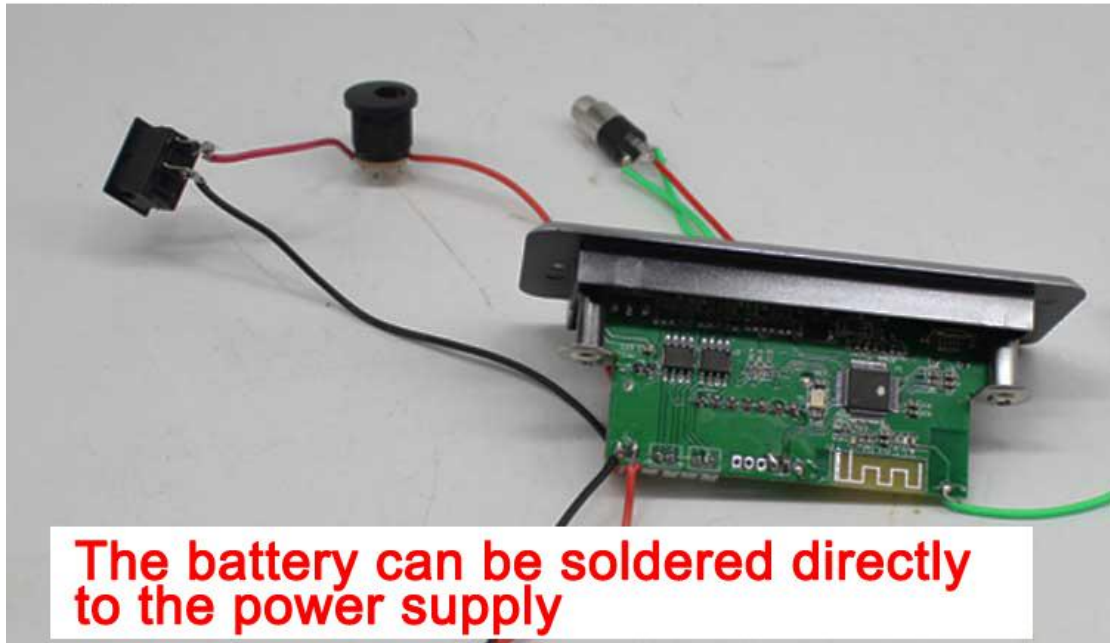
Wiring method of power switch



Wiring method of horn

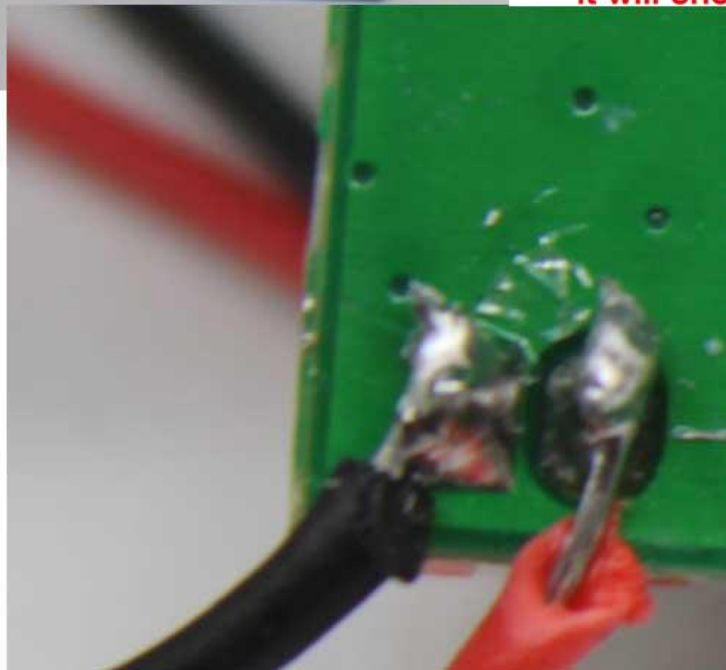


Welding method of storage battery



Pay attention to the positive and negative poles

Do not connect tin in series at the welding point, it will short circuit



Red wire connected to positive pole

Black wire connected to negative pole

Finally assemble the housing

