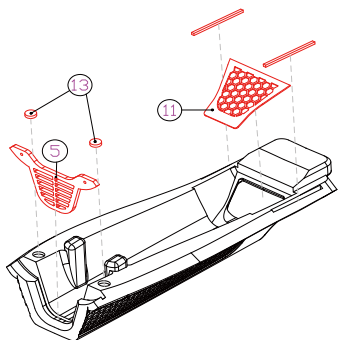
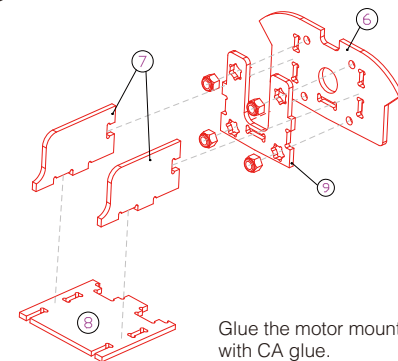
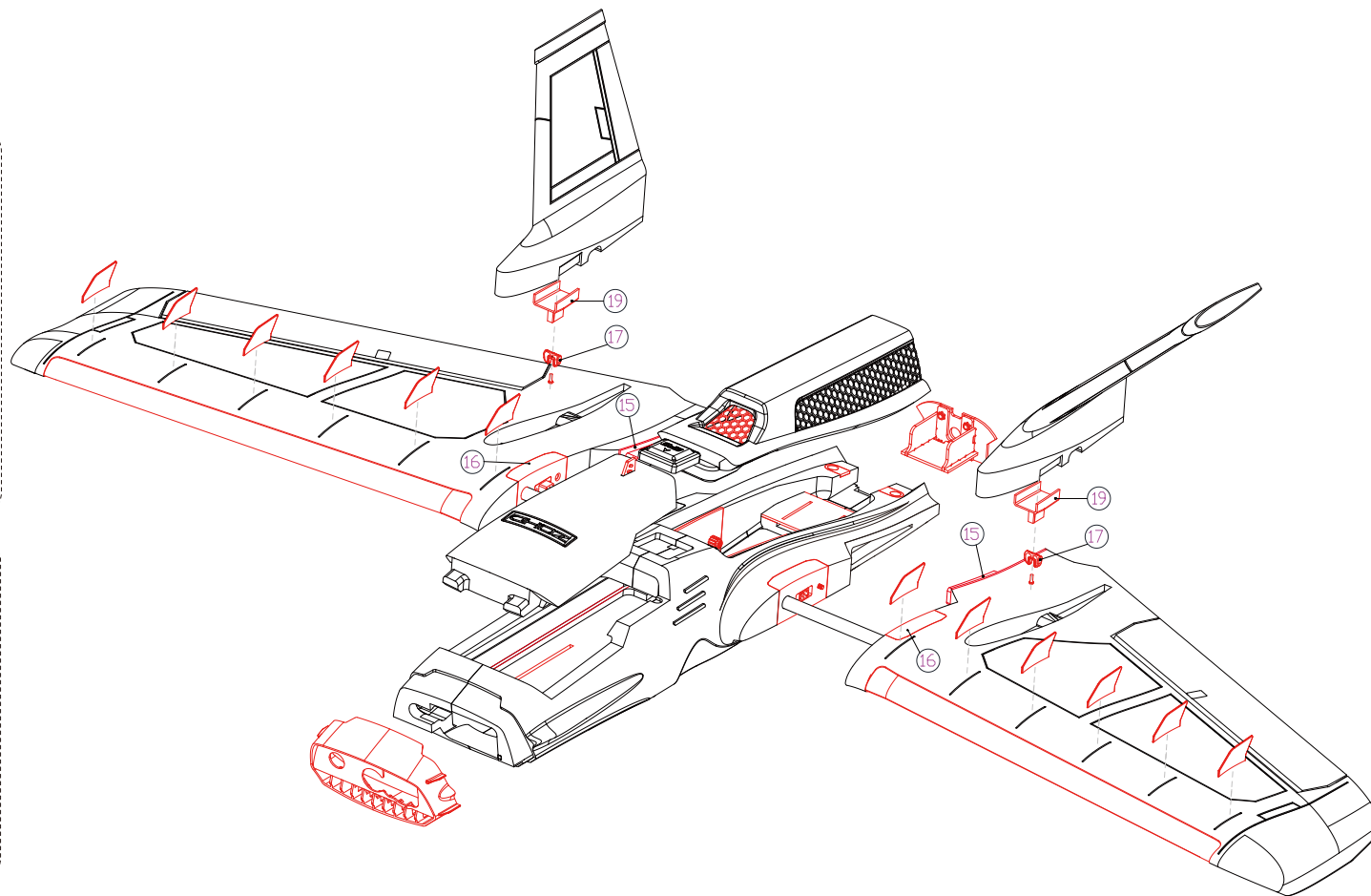
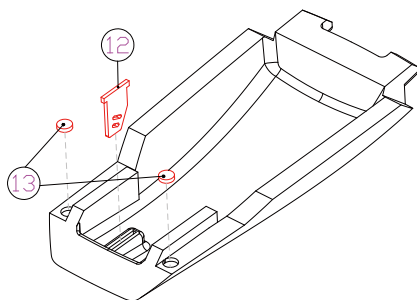


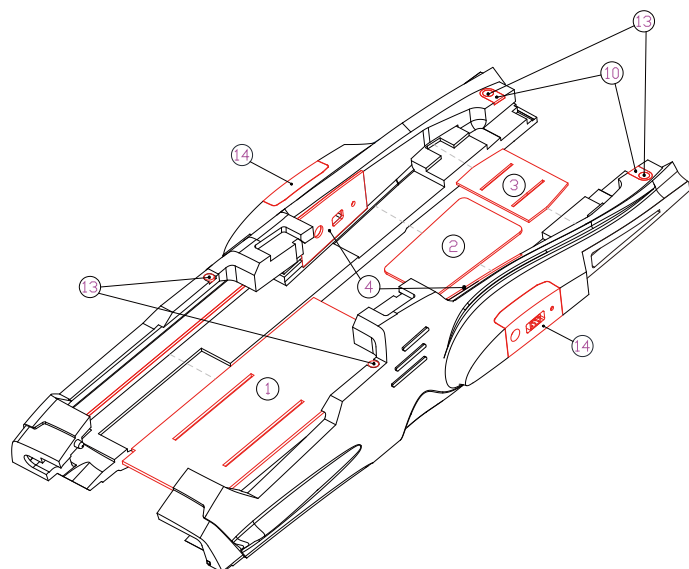
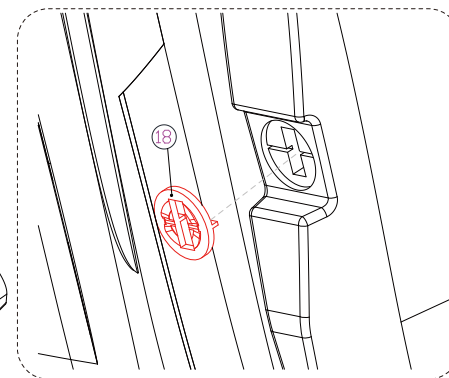
PARTS ASSEMBLY :



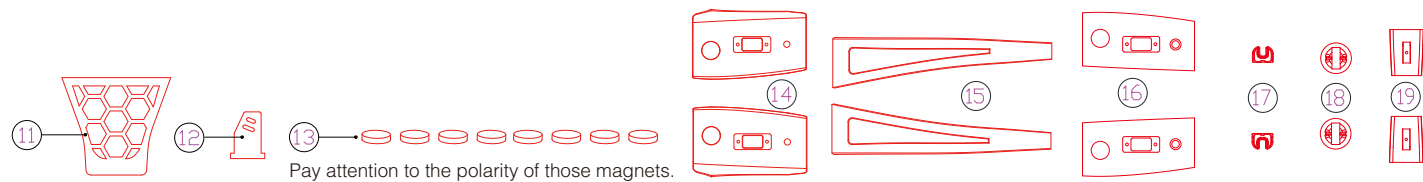
Glue the 2 short pieces of CF rod inside the rear hatch following the illustration.



Glue the motor mount with CA glue.



Before gluing the fuselage, make sure to embed the 2 long CF rods that go along on each side of the fuselage. The CF rod for the left side is longer than the one for the right side. After that you can insert plywood parts 1 and 3 into the slot of either part of the fuse before finishing gluing the whole fuselage together.



Pay attention to the polarity of those magnets.

