

指纹挂锁 (TSA)



指纹识别



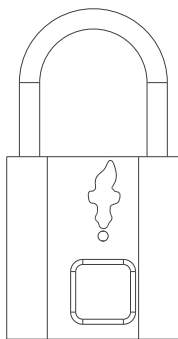
超长待机时间



USB充电



TSA海关锁



一、USB接口:

设备通过数据线连接USB进行充电。
(首次使用请先给设备充满电。)



部件识别:

- 1.USB接口 2.指纹采集器 5.TSA锁孔
3.LED指示灯 4.锁梁

二、指示灯

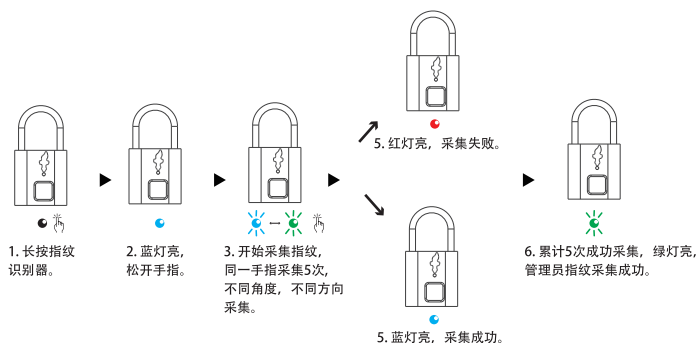
采用3色指示灯, 指示灯不同颜色, 不同状态代表设备不同状态。详情见下表:

LED	指示灯状态	设备状态
	红灯闪烁	指纹采集失败
	绿灯闪烁	指纹采集模式/解锁成功
	绿灯长亮	指纹采集成功
	蓝灯长亮	管理员指纹授权
	蓝灯闪烁	出厂模式
	红灯长亮	清除所有指纹模式

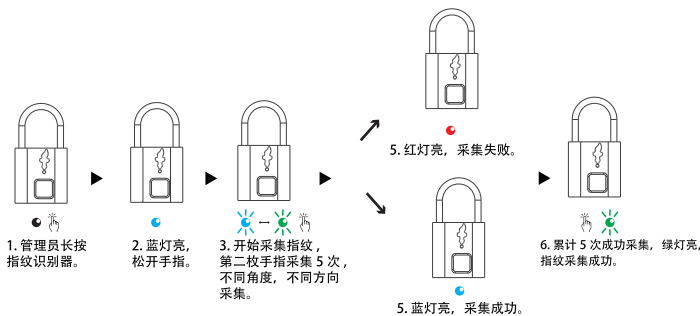
注意:

- 设备未录入指纹时, 解锁成功时绿灯亮。
- 当设备电量不足时, 红灯闪烁, 请及时充电;
充电中的指示灯为红灯, 充满后灯灭。

三、首次 (管理员) 指纹录入说明



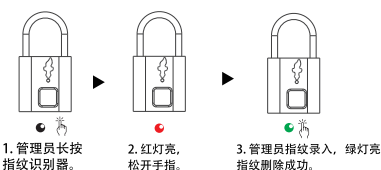
四、第二个到第十个指纹录入说明



备注:

- 默认第一第二枚指纹为管理员指纹。
- 采集第二到第十枚指纹需要管理员指纹授权。

五、删除指纹说明



备注:

只有管理员才能删除指纹, 并且是一次性删除全部指纹。

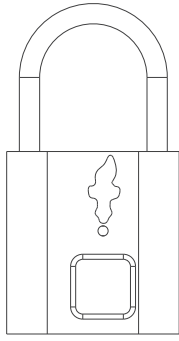
六、规格参数

支持360°任意方向按压式指纹识别;
分辨率508DPI;
ESD: +/-12kV空气, +/-8kV接触;
FRR: <1%;
FAR: <0.002%;
识别时间: <300ms;
电池容量: 5V 60mAh
充电电压: 5V 100mA

七、低电量报警模式

- 按压已录入的指纹, 低电量报警 (红灯连续闪烁5次), 随即亮绿灯和开锁。
- 按压未录入的指纹, 低电量报警 (红灯连续闪烁5次), 亮红灯, 不开锁, 随即进入休眠。

Fingerprint Padlock (TSA)



Fingerprint



Long Standby Time



USB Charge



TSA

I . USB Interface:

The product is charged by USB. Please fully charge the product for the first time.

II . LED

Use 3-color LED. Different LED represents different mode.



Components:

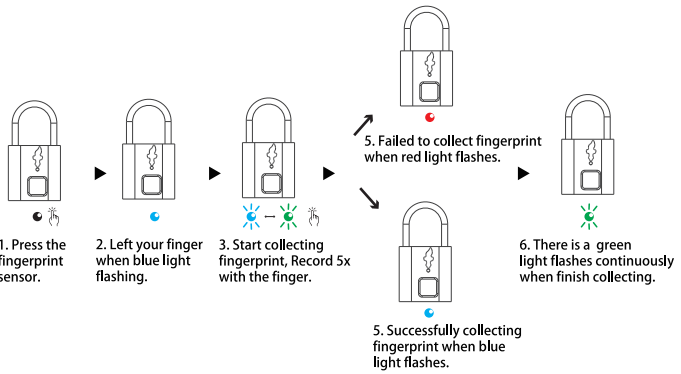
- 1. USB Port
- 2. Fingerprint Sensor
- 3. LED
- 4. Shackle
- 5. TSA keyhole

LED	Function	Mode
	Red light flashes	Failed to collect fingerprint
	Green light flashes	Fingerprint collection mode/ Unlocked successfully
	Green light on	Collect fingerprint successfully
	Blue light on	Admin fingerprint authorization
	Blue light flashes	Restore factory mode
	Red light on	Delete fingerprint mode

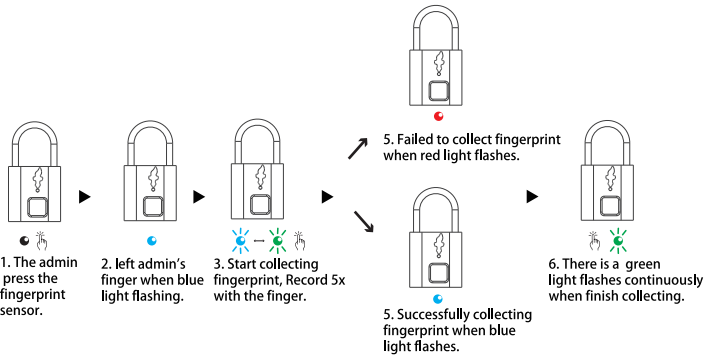
Remarks:

- 1. The Green light on when unlocked successfully means there is no fingerprint in the lock.
- 2. The red light flash when the lock is in low battery, please recharge in time. The red light is on when recharging. Light off when fully recharged.

III. How to Collect the First Fingerprint



IV. How to Collect The 2nd to 10th Fingerprints



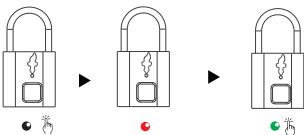
Remarks:

- 1. The first and second fingerprints are the admins by default.
- 2. One of the admins fingerprint will be need to authorize when adding fingerprints.

V. How to Delete Fingerprints

VI . Specifications

Support 360 degree angel fingerprint recognize
 Resolution: 508DPI
 ESD: +/-12kV air, +/-8kV contact
 FRR: <1%
 FAR: <0.002%
 Recognize time: <300mS
 Battery: 5V 60mAh
 Charger: 5V 100mA



Remarks:

All fingerprints is deleted at the one time.

VII. Low Battery Alarm Mode

- A. When in low battery mode, press the fingerprint sensor with registered fingerprint, red light flash 5 times continuously, then green light on and the lock will be open.
- B. When in low battery mode, press the fingerprint sensor with unregistered fingerprint, red light flash 5 times continuously and the light stay red. The lock will not be open and enter standby mode.