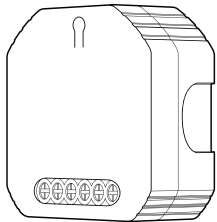


# Instruction Manual

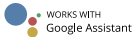
## Smart Switch Module

### BLE Mesh 1 Gang

#### BM-104



English

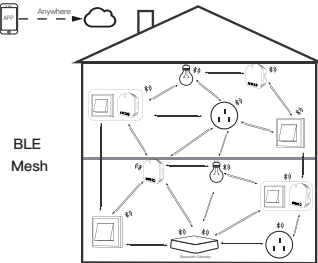


- Bitte scannen Sie den QR-Code, um das deutsche Handbuch, das Installationsvideo und die Funktionseinführung zu erhalten
- Escanee el código QR para obtener el manual en español, el video de instalación y la introducción de la función
- Veuillez scanner le code QR pour obtenir le manuel en français, la vidéo d'installation et l'introduction des fonctions
- Отсканируйте QR-код, чтобы получить руководство на русском языке, видео по установке и описание функций
- Leia o código QR para obter o manual em português, o video de instalação e a introdução das funções

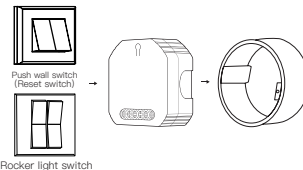
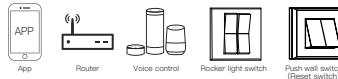


请扫描二维码获取中文说明书、安装视频及功能介绍

Global international operation Whenever & Wherever You are, All-in-one Mobile App



In house local operation



### Step 1

- Turn off the circuit breaker and use the electrical tester to test the power.
- Ensure the circuit breaker is off before wiring.



### Attention:

Please disconnect the power supply before installing or removing the device for avoiding irreversible damage on the device from the electric current or some unpredictable problems such as lamp flashing.

1

English

2

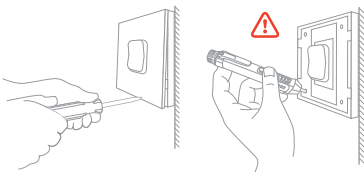
3

English

4

### Step 2

- Remove the old switch



### Step 3

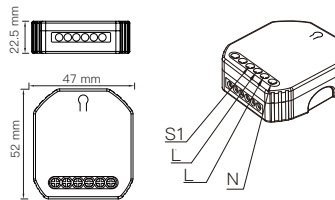
- Remove the switch and pull it away from the wall. Identify Line/Load Wire (Note: The color of your wire may be different from the color shown on the manual.)

### Verify power is off

- We recommend you remove the faceplate from the old switch and use an electrical tester to test all wires connected to the switch to ensure there is no voltage in the circuit.
- You may need to turn off more than one circuit breaker.

### Warnings:

1. Installation must be carried out by a qualified electrician in accordance with local regulations.
2. Keep the device out of the reach of children.
3. Keep the device away from water, damp or hot environment.
4. Install the device away from strong signal sources such as microwave oven that may cause signal interruption resulted in abnormal operation of the device.
5. Obstruction by concrete wall or metallic materials may reduce the effective operation range of the device and should be avoided.
6. Do NOT attempt to disassemble, repair or modify the device.

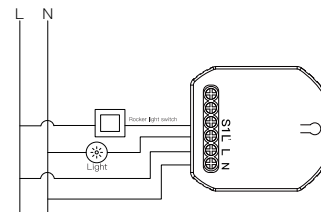


### TECHNICAL SPECIFICATIONS

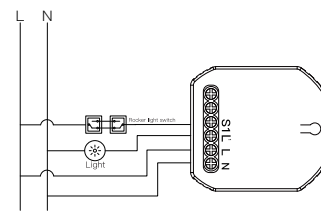
Model	BM-104
Voltage	90-250V AC 50/60Hz
Current	10A/Gang; Total 10A
Wireless Protocol	BLE Mesh
Operation Temp.	-10°C - +40°C
Case Temp.	Tc: +80°C (Max.)
Operation Range	≤200 m
Dims (WxDxH)	47 x 52 x 22.5 mm
IP Rating	IP20

### WIRING DIAGRAM

1. With one 2 Gang switch



2. With 2 Gang 2 Way switches



5

English

English

6

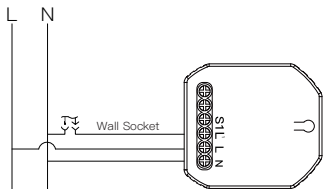
7

English

English

8

### 3. With Wall Socket



#### Wiring Instructions and Diagrams

1. Turn off the power supply before carrying out any electrical installation work.
2. Connect wires according to the wiring diagram.
3. Insert the module into the junction box.
4. Connect the power supply and follow switch module configuration instructions.

**Notes:** Put your smartphone close to the switch module when you're configuring, and make sure you have min. 50% Wi-Fi signal.

9

English

English

10

## BLE Mesh link method (Two pairing methods)

#### How to reset/re-pair BLE Mesh code

- a. For reset switch (Set as reset switch in APP):** press the switch button for 10 times to hear the beep sounds continuously.  
(If using rocker light switch, you should press the rocker light switch for 20 times)
- b. For rocker light switch (Set as rocker switch in APP):** press the switch button for 10 times (ON/OFF cycle for 5 times) to hear the beep sounds continuously.  
(If using reset switch, you should press the reset switch for 5 times)
- c. For reset button:** long press the button on the module to hear the beep sounds continuously.

**3.1** Method one: First connect via mobile phone Bluetooth, and then associate the device via Bluetooth gateway

1. Confirm the device beeps continuously, if not, please refer to page 13 for how to enter the network configuration.

13

English

English

14

## FAQ

Q: What should I do if I can't configure the switch module?

1. Bluetooth devices need to be added in our App instead of the Bluetooth adding interface of mobile phones;
2. Whether wi-fi is enabled on the mobile phone and whether the router works normally;
3. The mobile phone must be connected to the network when connected to the Bluetooth device (for the Bluetooth device can be added successfully only after being registered in the cloud server);
4. If what you have is an Android phone, you must open the location permission;
5. It is recommended to reset the Bluetooth device first to add for the device may have been added before;
6. Keep the distance between the Bluetooth gateway and the Bluetooth device under moderate position (less than 3 meters), and it is recommended to get as close as possible (if there is no Bluetooth gateway, you can skip it and directly connect the mobile phone);
7. Check if there are other users are using the Bluetooth device (Bluetooth device can only be controlled and used by one user at the same time due to its characteristics, and it will appear offline when used by other users)

## Add Devices

### 1 Download Smart Life App



Please scan the QR code or download Smart Life on App store.

### 2 Registration or Log in

- Download "Smart Life" Application
- Enter the Register/Login interface; tap "Register" to create an account by entering your phone number to get verification code and "Set password". Choose "Log in" if you already have a Smart Life account.

11

English

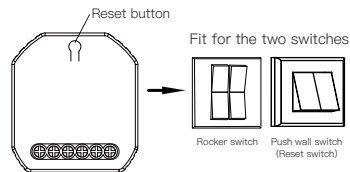
English

12

### 3 Configure the APP to the switch

- Preparation: Ensure the switch has been connected with electricity; ensure your phone has been connected to Wi-Fi and is able to connect to the Internet.

#### Note:



4. Add the device successfully, you can edit the name of the device to enter the device page by click "Done"

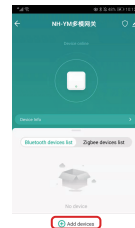
Done

#### Added successfully

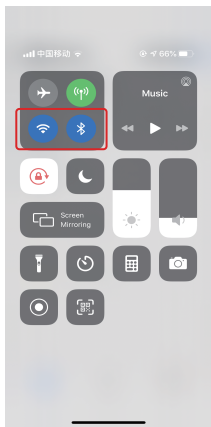
Smart Switch Module  
Device added successfully

保存 主题 次品 删除

5. Open the Bluetooth gateway, click "Add devices", click "Associate Bluetooth devices", select the device, and click "Add finish".



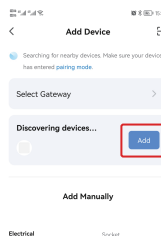
16



2. Make sure your phone is connected to Wi-Fi and Bluetooth.



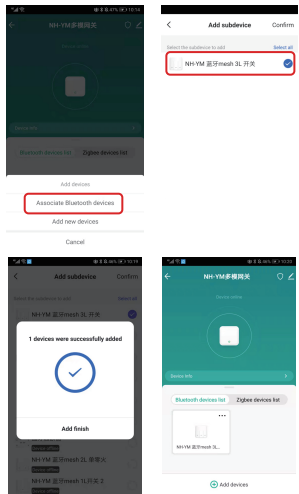
3. Open Smart Life/Tuya App and Click "+", then the prompt page will automatically show on the screen. Click "Go to add".



15

English

English

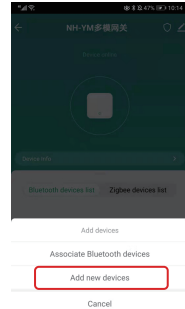


17

English

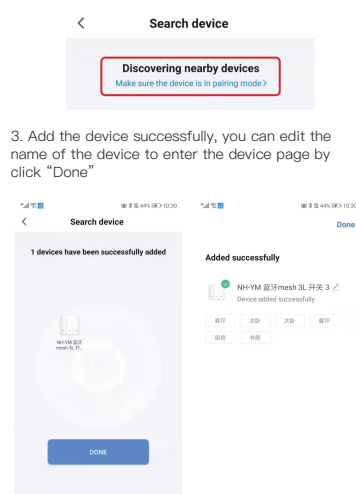
### 3.2 Method two: Add devices directly via Bluetooth gateway

1. Confirm the device beeps continuously, if not, please refer to page 13 for how to enter the network configuration.
2. Open the Bluetooth gateway under Smart Life App, click "Add devices", and click "Add new devices".



18

English



19

English

### 3.3 How to achieve multi-control association

Note:Please confirm you have successfully finished the BLE Mesh link method above for adding this switch to your Smart Life App before the association.

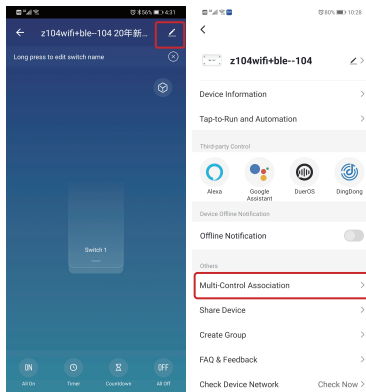
- 1.Add another smart switch to the same Smart Life/Tuya App.(If there is a smart switch having been added before to the app,just go to next step.)Note:There is no need to wire the new added switch to the light,only L and N are required for wiring.
- 2.Then you will see two devices in the app and click the main switch(as One gang switch as below) by entering into the next operation.



20

English

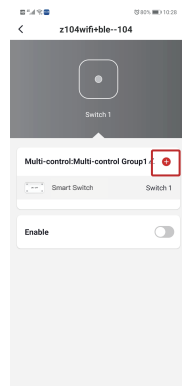
- 3.Click in the upper right corner and choose "Multi-Control Association", and then click "+" in the right corner



21

English

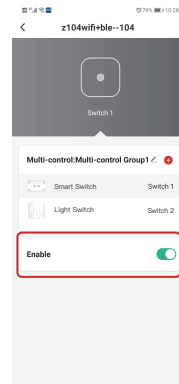
- 4.Choose the switch that you want to associate to and then choose the switch button that you want to control the same light.



22

English

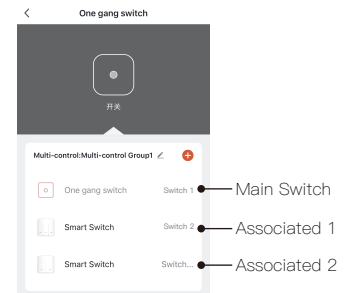
- 5.Then go back to previous page,you will see two items in the page,one is your main switch,the other is the one you associate just now.  
Note:Please confirm the associated switch is enabled.



23

English

- 6.Now you are able to control your light with two switches.Do not associate another button in the same switch for multi-control.
- 7.If you want to add another third or more smart switches to control your light,just repeat the steps above.And you will see the result as below when you associate another new switch.



24

English

## SERVICE

1. During the free warranty period, if the product breaks down during normal use, we will offer free maintenance for the product.
2. Natural disasters/man-made equipment failures, disassembly and repair without the permission of our company, no warranty card, products beyond the free warranty period, etc., are not within the scope of free warranty
3. Any commitment (oral or written) made by the third party (including the dealer/service provider) to the user beyond the warranty scope shall be executed by the third party
4. Please keep this warranty card to ensure your rights
5. Our company may update or change the products without notice. Please refer to the official website for the updates.

25

English English

## RECYCLING INFORMATION

All products marked with the symbol for separate collection of waste electrical and electronic equipment (WEEE Directive 2012/19 / EU) must be disposed of separately from unsorted municipal waste. To protect your health and the environment, this equipment must be disposed of at designated collection points for electrical and electronic equipment designated by the government or local authorities. Correct disposal and recycling will help prevent potential negative consequences for the environment and human health. To find out where these collection points are and how they work, contact the installer or your local authority.



26

## WARRANTY CARD

### Product Information

Product Name \_\_\_\_\_  
Product Type \_\_\_\_\_  
Purchase Date \_\_\_\_\_  
Warranty Period \_\_\_\_\_  
Dealer Information \_\_\_\_\_  
Customer's Name \_\_\_\_\_  
Customer Phone \_\_\_\_\_  
Customer Address \_\_\_\_\_

### Maintenance Records

Failure date	Cause Of Issue	Fault Content	Principal

27

English English

Thank you for your support and purchase at we Moes, we are always here for your complete satisfaction, just feel free to share your great shopping experience with us.



If you have any other need, please do not hesitate to contact us first, we will try to meet your demand.

FOLLOW US

f @moessmart    y MOES.Official    @moes\_smart  
t @moes\_smart    @moes\_smart    www.moeshouse.com



WENZHOU NOVA NEW ENERGY CO.,LTD  
Address: Power Science and Technology  
Innovation Center, NO.238, Wei 11 Road, Yueqing  
Economic Development Zone, Yueqing, Zhejiang,  
China  
Tel: +86-577-57186815  
Email: service@moeshouse.com

**EC REP** AMZLAB GmbH  
Laubenhof 23, 45326 Essen  
Made In China

28

AL23