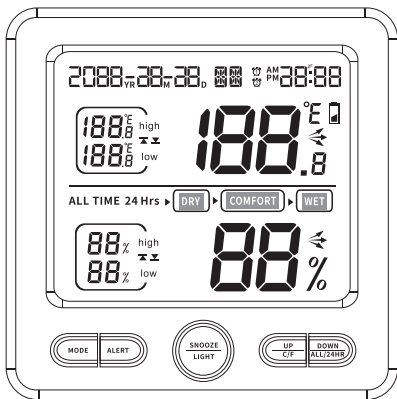


# **TS-6211 User Manual**

# TS-6211 Indoor Temperature And Humidity Meter Clock



**Full functional display**

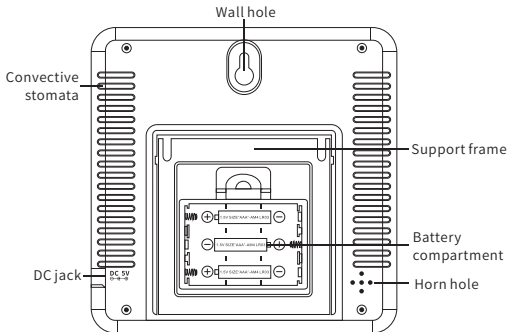
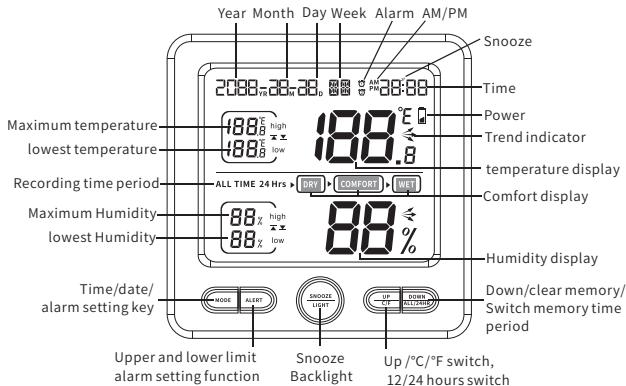
## 1. Introduction

Thank you for purchasing the TS-6211 Indoor Thermohygrometer Clock. The following is a user guide that provides step-by-step instructions on installation and operation and troubleshooting

## 2. Start Guide

Power on the product, and the LCD will display all functions for 3 seconds (and the orange, red and white backlights will also turn on in turn). Then, the system's initial interface will appear after a “beep” sound

# Functionality Full Display Indicator Chart:

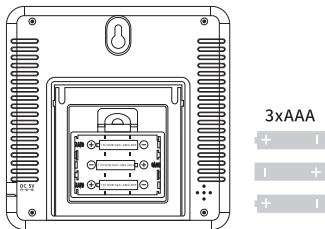


## 2.1 Parts list

QTY	ITEM
1	Main frame (LxHxW): 12.5*12.5*2.5cm LCD size (LxW): 9.5*8cm
2	power cord, manual

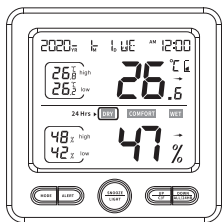
## 2.2 Display console settings

1.Remove the battery door on the back of the receiver, as shown in **Figure 1**. Insert three AAA batteries into the back of the receiver.



**Figure 1**

2.Power on the product, and the LCD will display all functions for 3 seconds (and the orange, red, and white backlights will also turn on in turn). Then, the system's initial interface will appear after a “beep” sound, as shown in **Figure 2**.



**Figure 2**

- The default display at power-on: 12:00 AM on January 1, 2020
- Week language: English WE
- Default time format: 12-hour format
- Default unit: temperature [°C], relative humidity [%]

### **Special Note:**

1. Long press [MODE+UP ]for 2 seconds to enter the temperature and humidity calibration setting
2. Under battery power supply, the backlight will only be on for 8 seconds without operation
3. In any setting state, it will automatically return after 8 seconds of no operation
4. When the DC power supply is plugged in, the backlight will be on for 8 seconds, and it will automatically go out when no buttons are operated. If you need to keep the backlight on, press and hold the [SNOOZE] button for more than 2 seconds to turn on the always-on backlight. If you need to turn off the long light, press and hold the SNOOZE button for more than 2 seconds to turn off the backlight.
5. In the standard mode, long press the DOWN, ALL/24HR key to clear the maximum and minimum temperature and humidity memory data. (Note: In the ALL TIME state, long press the ALL/24HRkey to clear the data for all time periods; in the 24Hrs state, the data within 24 hours is clear.)

## 3.Function display


### 3.1 Comfort display

The comfort level display is based on the humidity range specified in the diagram:

RH<50%	15.6-26.7°C RH 50%~70%	RH>70%
DRY	COMFORT	WET

★ If the temperature is outside 15.6°C-26.7°C, but the humidity is within the range of 50-70%, it will not be displayed.

### 3.2 Temperature and humidity trend icon

The temperature and humidity trend icon  indicates the change trend of temperature and humidity.

#### Temperature change:

1. For each comparison with the last detected temperature, if the range of change exceeds +1°C, the trend change will be refreshed to rise immediately.
2. For each comparison with the last detected temperature, if the range of change exceeds -1°C, the trend change will be refreshed to drop immediately.
3. For each comparison with the last detected temperature, if the range of change does not exceed  $\pm 1^\circ\text{C}$ , the current trend will remain unchanged.
4. If the cumulative temperature change exceeds +1°C within 1 hour, the trend change will be refreshed to rise immediately.
5. If the cumulative temperature change exceeds -1°C within 1 hour, the trend change will be refreshed to drop immediately.

6. If the cumulative temperature change does not exceed  $\pm 1^{\circ}\text{C}$  within 1 hour, the current trend will remain unchanged.

7. When comparing the current temperature with the temperature 1 hour ago, if the change does not exceed  $\pm 1^{\circ}\text{C}$ , the trend change is steady.

### **Humidity change:**

1. For each comparison with the last detected humidity, if the range of change exceeds +3%, the trend change will be refreshed to rise immediately.

2. For each comparison with the last detected humidity, if the range of change exceeds -3%, the trend change will be refreshed to drop immediately.

3. For each comparison with the last detected humidity, if the range of change does not exceed  $\pm 3\%$ , the current trend will remain unchanged.

4. If the cumulative humidity change exceeds +3% within 1 hour, the trend change will be refreshed to rise immediately.

5. If the cumulative humidity change exceeds -3% within 1 hour, the trend change will be refreshed to drop immediately.

6. If the cumulative humidity change does not exceed  $\pm 3\%$  within 1 hour, the current trend will remain unchanged.

7. When comparing the current humidity with the humidity 1 hour ago, if the change does not exceed  $\pm 3\%$ , the trend change is steady.

## **3.3 Temperature and humidity calibration function**

In the standard mode, short press the **[MODE]** key and **[UP]** key at the same time to enter the temperature value calibration state. When setting, single press the **[UP]** key to add 0.1, long press the **[UP]** key to quickly increase (8 steps/ Seconds), single

press the [**DOWN**] key to subtract 0.1, long press the [**DOWN**] key to subtract quickly (8 steps/sec), after the setting is completed, short press the [**MODE**] key to enter the humidity value calibration state. When setting, single Press [**UP**] key to increase by one, long press [**UP**] key, fast increase (8 steps/sec), single press [**DOWN**] key, minus one, long press [**DOWN**] key, fast decrease (8 steps/sec) , After setting is completed, short press [**MODE**] to confirm.

## 4. Related function operations

**Note:** The 6211 indoor temperature and humidity meter clock has 5 buttons, [**MODE**] button, [**ALERT**] button, [**SNOOZE,LIGHT**] button, [**UP,C/F**] button, [**DOWN,ALL/24HR**] button

### 4.1 Time/date setting

In standard mode, short press [MODE] key to switch: Time→ Alarm 1→Alarm 2, after selecting Time/Alarm 1/Alarm 2, long press [MODE] for 2 seconds to enter setting mode.

The sequence of time setting is: week language setting (EN-GE-IT-FR-NE-ES-DA-RU) → hour (flashing hour digits) → minute (flashing minutes digits) → year → month day/ Switch the position of the day and the month → month → day → exit the setting.

The alarm setting sequence is: hour (flashing hour digits) → minute (flashing minute digits) → exit setting.

Single press [MODE] key to confirm the setting and enter the next setting.



**Note:** During the setting process, short press the [MODE] key to confirm the setting and enter the next setting. Long press the [MODE] key to have no response. If there is no operation for 8 seconds during the setting process, the setting will be automatically saved and the setting mode will exit.

### Day-language table:

	English	Russian	Danish	Spanish	Dutch	French	Italian	German
Language	EN	RU	DA	ES	NE	FR	IT	GE
Monday	MO	NH	MA	LU	MA	LU	LU	MO
Tuesday	TU	DT	TI	MA	DI	MA	MA	DI
Wednesday	WE	CP	ON	MI	WO	ME	ME	MI
Thursday	TH	YT	TO	JU	DO	JE	GI	DO
Friday	FR	NT	FR	VI	VR	VE	VE	FR
Saturday	SA	CG	LO	SA	ZA	SA	SA	SA
Sunday	SU	DC	SO	DO	ZO	DI	DO	SO

### 4.2 C/F temperature unit switch:

**Shown:** In standard mode, short press the [UP] key to switch between °C and °F. **Figure 3**



Celsius degree



Fahrenheit degree

Figure 3

### 4.3 12/24 hour system switching:

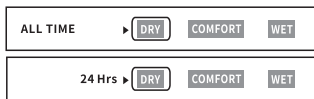
Indication: In standard mode, long press the [UP] key to switch between 12/24 hour format. As shown in **Figure 4**



**Figure 4**

### 4.4 Temperature and humidity memory function:

In standard mode, short press the [DOWN,ALL/24HR] key to switch to record the maximum/minimum temperature and humidity of all time periods, or the maximum/minimum temperature and humidity within 24 hours.



### 4.5 Temperature and humidity upper and lower limit alarm settings:

In standard mode, short press [ALERT] key to switch [ALERT] alarm function

Long press the [ALERT] key to enter the [ALERT] setting function, the setting sequence is: upper temperature limit (orange prompt) → lower temperature limit (red prompt) → upper humidity limit (orange prompt) → lower humidity limit (red prompt) → exit setting.

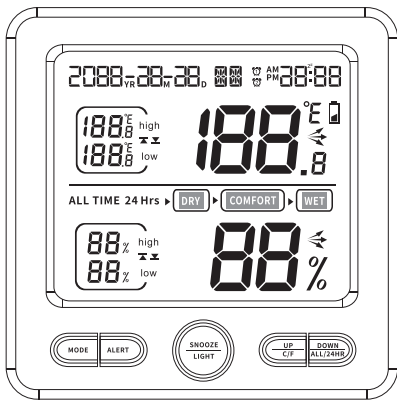
When setting the temperature value, single press the **[UP]** key to increase by 0.1, long press the **[UP]** key to quickly increase (8 steps/sec), single press the **[DOWN]** key to subtract 0.1, and long press the **[DOWN]** key to quickly decrease (8 steps/sec), when setting the humidity value, single press the **[UP]** key, increase by one, long press the **[UP]** key, fast increase (8 steps/sec), single press the **[DOWN]** key, decrease by one, long press **[DOWN]** key, fast decrease (8 steps/sec).

#### **4.6 Snooze function:**

In the alarm mode, short press the **[SNOOZE]** key to enter the 5-minute snooze mode, press other keys to exit the current alarm (alarm duration: 2 minutes, snooze duration: 5 minutes).

# TS-6211 使用说明书

## TS-6211室内温湿度计时钟：



### 功能全显图

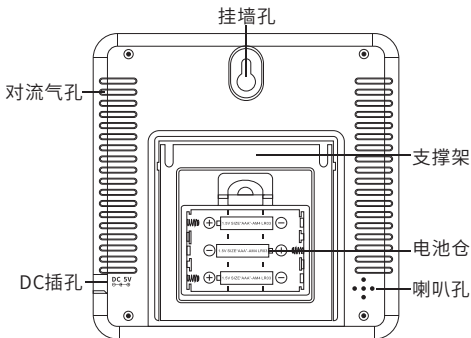
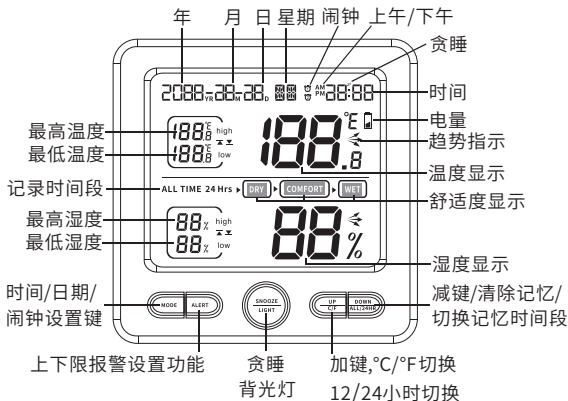
## 1.简介

感谢您购买的TS-6211室内温湿度计时钟。以下是用户指南提供了有关安装和操作及故障排除的逐步说明

## 2.入门指南

产品通电，LCD全显示3秒（同时橙黄，红，白三色背光各亮1秒）后，BI一声后显示系统初始界面。

## 界面指示图：



## 2.1 零件清单

QTY	ITEM
1	主机 框架 (LxHxW) :12.5*12.5*2.5cm LCD尺寸 (LxW) :9.5*8cm
2	电源线、说明书

## 2.2 显示控制台设置

1. 拆卸接收机背面的电池门，如图1所示。在接收机的背面插入三个AAA电池。

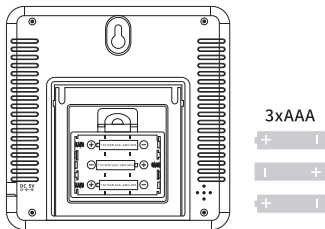


图1

2. 上电或复位时，LCD全显示3秒钟，背光同时点亮3秒，进入正常状态检测温度、湿度，如图2所示。

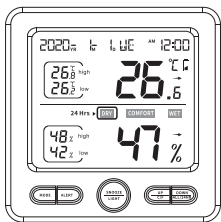


图2

- 开机默认显示：2020年1月1日 AM 12: 00
- 星期语言：英文 WE
- 默认时间制式：12小时制式
- 默认单位：温度 [°C]，相对湿度 [%]

### 特别说明：

- 1.在标准模式下，长按MODE+UP 2秒进入温湿度校准设置
- 2.电池供电状态下，背光无操作只亮8秒
- 3.在任何设置状态下，无操作8秒后自动返回
- 4.当插入DC供电时，背光会亮8秒后，在没有操作任何按键时，会自动熄灭，如需要背光长亮，可通过长按SNOOZE键2秒以上，打开常亮背光状态。如需关闭长亮，同样长按SNOOZE键2秒以上，关闭背光。
- 5.在标准模式下，长按DOWN,ALL/24HR键清除最大和最小温湿度记忆的数据。（注意：在ALL TIME状态下，长按ALL/24HR键清除的是所有时间段的数据；在24Hrs状态下，清楚的是24小时内的数据。）

## 3.功能显示

### 3.1舒适显示


舒适度显示基于图中指定的湿度范围：

RH<50%	15.6-26.7°C RH 50%~70%	RH>70%
DRY	COMFORT	WET

★ 温度在15.6°C-26.7°C之外，湿度在 50-70 % 范围内，则无显示



## 3.2 温湿度趋势图标

温湿度趋势图标  表示温度和湿度的变化趋势

### 温度变化:

1.每次比较上一次的检测温度，如果变化范围超出 $+1^{\circ}\text{C}$ ，则立即刷新趋势变化为上升。

2.每次比较上一次的检测温度，如果变化范围超出 $-1^{\circ}\text{C}$ ，则立即刷新趋势变化为下降。

3.每次比较上一次的检测温度，如果变化范围不超出 $\pm 1^{\circ}\text{C}$ ，则趋势保持当前不变。

4.1小时内累计温度变化超出 $+1^{\circ}\text{C}$ ，则立即刷新趋势变化为上升。

5.1小时内累计温度变化超出 $-1^{\circ}\text{C}$ ，则立即刷新趋势变化为下降。

6.1小时内累计温度变化不超出 $\pm 1^{\circ}\text{C}$ ，则趋势保持当前不变。

7.当前温度与1小时前温度比较，变化不超出 $\pm 1^{\circ}\text{C}$ ，则趋势变化为平趋。

### 湿度变化:

1.每次比较上一次的检测湿度，如果变化范围超出 $+3\%$ ，则立即刷新趋势变化为上升。

2.每次比较上一次的检测湿度，如果变化范围超出 $-3\%$ ，则立即刷新趋势变化为下降。

3.每次比较上一次的检测湿度，如果变化范围不超出 $\pm 3\%$ ，则趋势保持当前不变。

4.1小时内累计湿度变化超出+3%，则立即刷新趋势变化为上升。

5.1小时内累计湿度变化超出-3%，则立即刷新趋势变化为下降。

6.1小时内累计湿度变化不超出±3%，则趋势保持当前不变。

7.当前湿度与1小时前湿度比较，变化不超出±3%，则趋势变化为平趋。

### 3.3温湿度校准功能

在标准模式下，同时长按[ **MODE** ]键加[ **UP** ]键，进入温度数值校准状态，设置时，单按[ **UP** ]键，加0.1，长按[ **UP** ]键，快加（8步/秒），单按[ **DOWN** ]键，减0.1，长按[ **DOWN** ]键，快减（8步/秒），设置完成以后，短按[ **MODE** ]键进入湿度数值校准状态，设置时，单按[ **UP** ]键，加一，长按[ **UP** ]键，快加（8步/秒），单按[ **DOWN** ]键，减一，长按[ **DOWN** ]键，快减（8步/秒），设置完成以后，短按[ **MODE** ]键确认。

## 4.相关功能操作

注意：TS-6211室内温湿度计时钟有5个按键，( **MODE** )按键，( **ALERT** )按键，( **SNOOZE,LIGHT** )按键，( **UP,C/F** )按键，( **DOWN, ALL/24HR** )按键

## 4.1 时间/日期设置

在标准模式下,短按[MODE]键切换: 时间→闹钟1→闹钟2, 选择时间/闹钟1/闹钟2后, 长按[MODE]键2秒进入设置模式。

时间设置顺序为: 星期语言设定 (EN-GE-IT-FR-NE-ES-DA-RU) →小时 (小时位数字闪动) →分钟 (分钟位数字闪动) →年→月日/日月位置切换→月→日 →退出设置。

闹钟设置顺序为: 小时 (小时位数字闪动) →分钟 (分钟位数字闪动) →退出设置。

单按[MODE]键为确认设置并进入下一项设置。

**备注:** 在设置过程中, 短按 [MODE] 键确定设置并进入下一项设置, 长按 [MODE] 键无反应, 在设置过程中8秒无操作, 将自动保存设置并退出设置模式。

星期语言对照表:

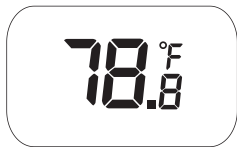
	英文	俄文	丹麦文	西班牙文	荷兰文	法文	意大利文	德文
语言	EN	RU	DA	ES	NE	FR	IT	GE
星期一	MO	NH	MA	LU	MA	LU	LU	MO
星期二	TU	DT	TI	MA	DI	MA	MA	DI
星期三	WE	CP	ON	MI	WO	ME	ME	MI
星期四	TH	YT	TO	JU	DO	JE	GI	DO
星期五	FR	NT	FR	VI	VR	VE	VE	FR
星期六	SA	CG	LO	SA	ZA	SA	SA	SA
星期日	SU	DC	SO	DO	ZO	DI	DO	SO

#### 4.2 C/F 温度单位切换：

在标准模式下，短按 [UP] 键进行摄氏度和华氏度的切换。如图3所示：



摄氏度

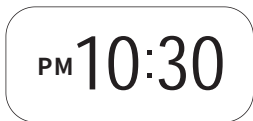


华氏度

图3

#### 4.3 12/24 小时制式切换：

在标准模式下，长按 [UP] 键进行12/24小时制式的切换。如图4所示：



12小时制

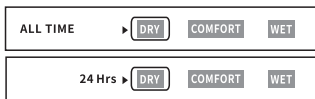


24小时制

图4

#### 4.4 温湿度记忆功能：

在标准模式下，短按 [DOWN, ALL/24HR] 键，可以切换记录所有时间段的最大/最小值的温湿度，或者24小时内的最大/最小值温湿度。



#### 4.5 温度湿度上下限报警设置：

在标准模式下，短按 [ALERT] 键，开关 [ALERT] 报警功能

长按 [ALERT] 键，进入 [ALERT] 设置功能，设置顺序为：温度上限（橙黄色提示）→ 温度下限（红色提示）→ 湿度上限（橙黄色提示）→ 湿度下限（红色提示）→ 退出设置。

设置温度数值时，单按 [UP] 键，加0.1，长按 [UP] 键，快加（8步/秒），单按 [DOWN] 键，减0.1，长按 [DOWN] 键，快减（8步/秒），设置湿度数值时，单按 [UP] 键，加一，长按 [UP] 键，快加（8步/秒），单按 [DOWN] 键，减一，长按 [DOWN] 键，快减（8步/秒）。

#### 4.6 贪睡功能：

闹钟响闹模式下，短按 [SNOOZE] 键，进入5分钟贪睡模式，按其它键退出当次响闹（响闹时长：2分钟，贪睡时长：5分钟）。