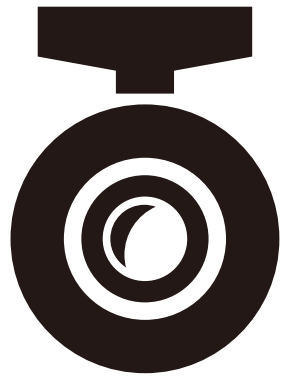


# USB HD DVR



Vehicle Android Navigation Special Purpose

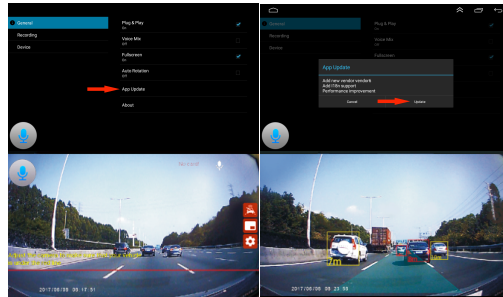
Notes: Normally choose the random USB interface of the large screen host machine for connection, e.g. USB1. Replace USB2 interface if the equipment can not be normally found.

## Application logo



## Adas activation

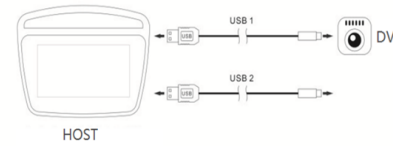
Android car navigation needs to be connected to the network. Follow the steps in the figure and click upgrade. Adjust the ADAS marking line to the center position after completion. When driving on the road is activated, the vehicle speed needs to reach more than 30 miles, and the activation time is about one minute.



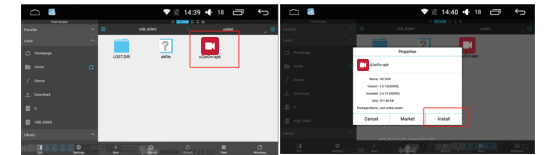
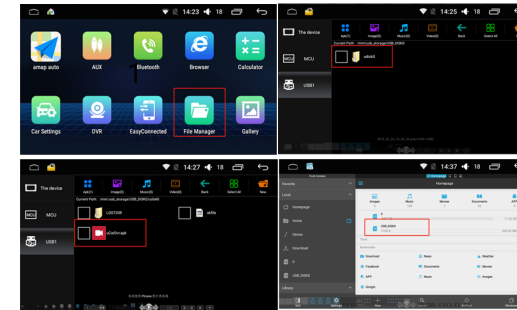
## Product features

- GPS information watermarking(part of DVR has this function)
- APK for convenient installation
- Clear starlight night-vision video picture
- Lane departure warning ADAS
- Automatic function: Automatic recording when power on and automatic cyclic covering recording
- Automatic synchronous vehicle-mounted time when power on

## Installation Method of APK (HD DVR):



If ES File Browser is installed in the vehicle and go to select external USB flash disk, installation software of APK, uCardvr.apk, can be seen and shown as below:



## Common Trouble Shooting:

Before DVR is sent for servicing, please study the possible reasons of problems by comparing to the table below and take actions accordingly for simple checking and minor adjustment, which may get the problem solved and the DVR might be operated normally.

Should the solutions indicated in the table can not get the problems solved efficiently, please contact us or professional service center.

## Problems Possible Reasons

- **Host machine has no indication after DVR is plugged.**  
Check if the recording power led lights up / Replace the USB interface of the host machine for reconnection.
- **Restart of DVR is frequently reminded.**  
Format TF card / Replace high speed TF card and restart.
- **DVR is not recording.**  
Check if TF card is inserted properly / Format TF card / Replace high speed TF card.
- **Video recording quality is not satisfactory.**  
Check if the protection tape of the lens is removed when delivery.
- **Video has no sound.**  
Check if the microphone is "On"

说明书  
成品尺寸: 75x120mm

# WiFi DASH CAM INSTRUCTIONS

Dear users, welcome to choose this product. Please read the operating instructions carefully before using this product.

## 1. Mobile app Download



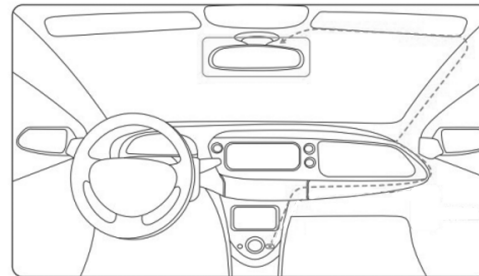
Roadcam

please scan the QR code above to download the mobile app

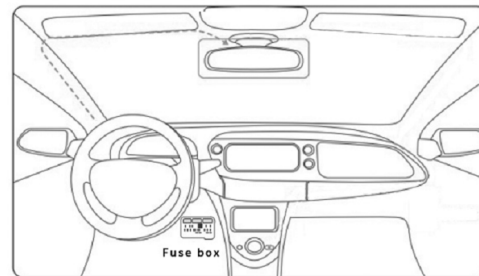


Or search "roadcam" on Google Play or APP store

## 2. Recorder installation guide



USB interface installation



ACC interface installation

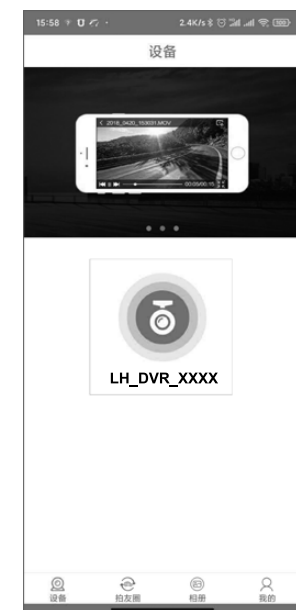
Install the recorder behind the rearview mirror, Connect the power supply.

## 3. App instructions



After starting the car to make the recorder work, find WiFi with the beginning of "DVR - or CVR" in the mobile phone settings, and enter the default password 12345678 to connect.

After the connection is completed, enter the app and click the middle camera icon to connect. The recorder time will also synchronize the current mobile phone time. In addition, you need to enter the recorder setting option and select "format SD card".



说明书  
成品尺寸: 75x120mm