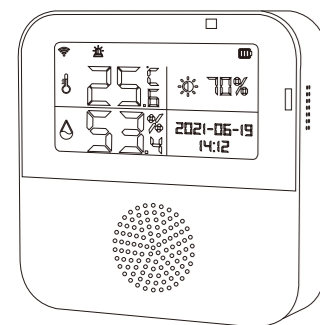


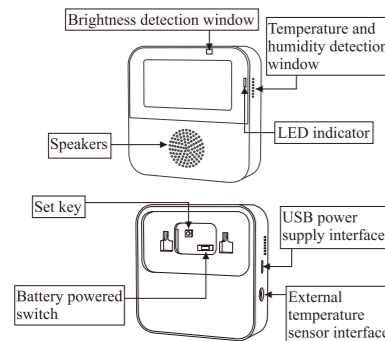


Smart temperature and humidity meter

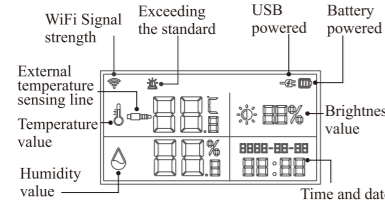
Instruction manual



Product Diagram

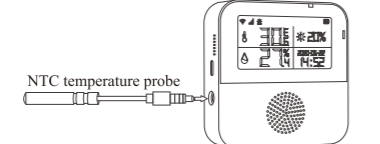


Screen Display Introduction

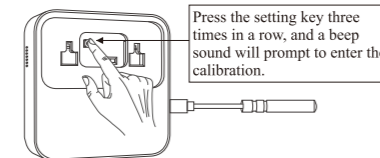


Temperature Sensing Line Calibration

- ⚠ After connecting the temperature sensing wire, it needs to be calibrated by itself. As follows:
- In order to correct the accuracy, the temperature sensing line and the thermohygrometer should be placed in the same environment for more than half an hour. (The temperature sensor should be placed in the air)
 - Insert the temperature sensing wire into the temperature and humidity sensor, and the temperature error occurs.



② Calibrate.



The function of the temperature line: it can measure the outdoor temperature, water temperature, fish tank, refrigerator temperature and so on.

Mobile APP

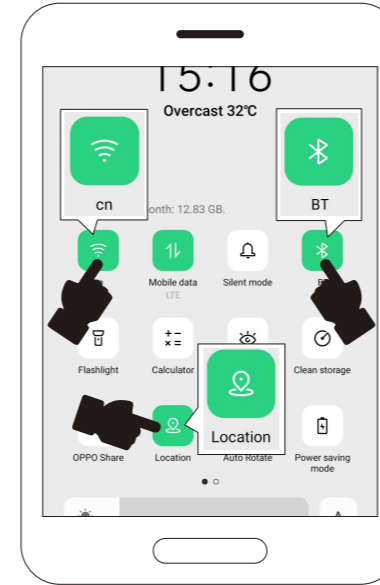
- Download the APP.
 - Scan the QR code to download the APP.
 - Please go to the application market to search for "Tuya Smart (Smart Life)".

2. Precautions before connecting your phone.

- WiFi frequency.
 - Support 2.4GHz
 - Not support 5GHz
 - The effective distance between the router and the temperature and humidity sensor.
 - Open distance ≤ 10m
- ⚠ The temperature and humidity sensor is too far from the router to connect to the phone.

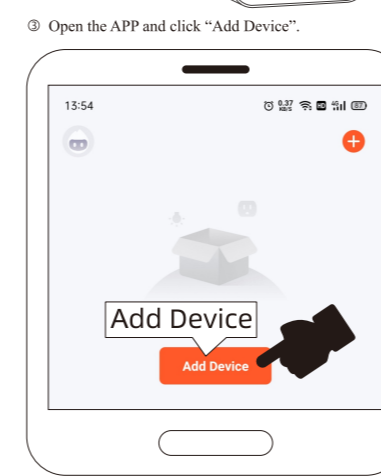
3. Connect the mobile phone.

- Connect mobile WiFi / turn on BT / locate.

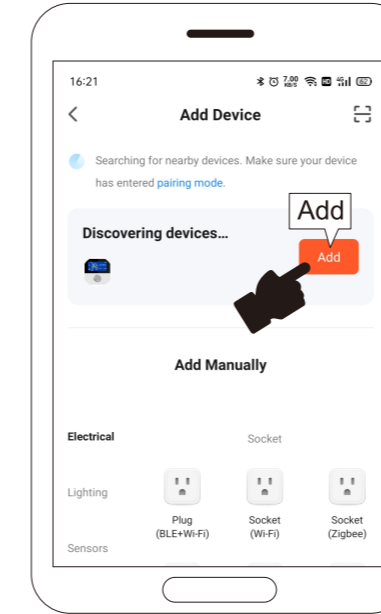


② Operating the product.

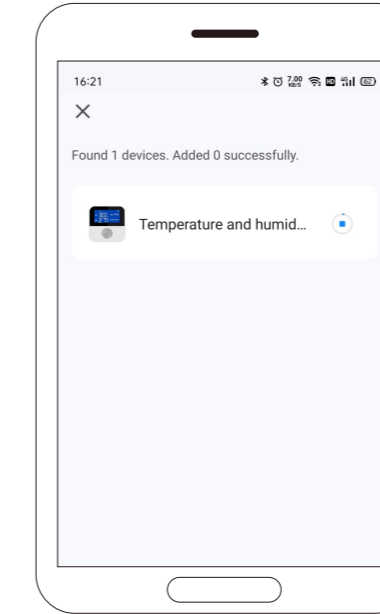
- Long press the setting key for about 6 seconds.
- The display screen restarts.
- The LED flashes.



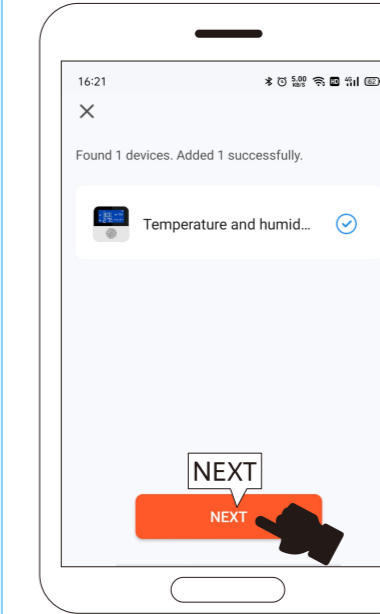
③ Discover the device, click "Add".



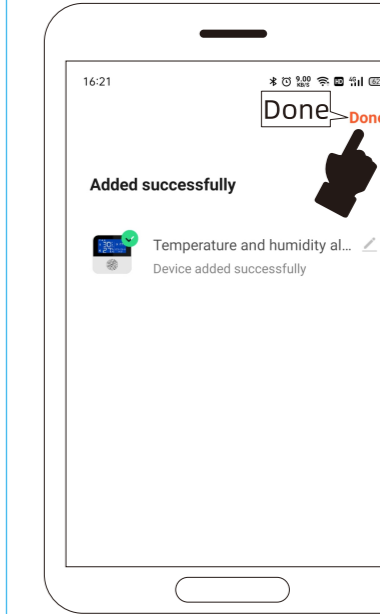
④ Show adding.



⑤ The addition is complete, click "Next".

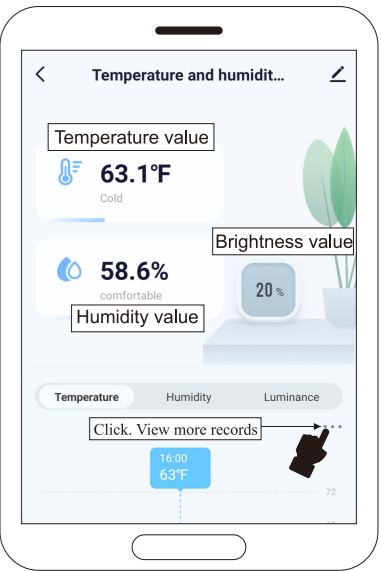


⑥ Click "Done".

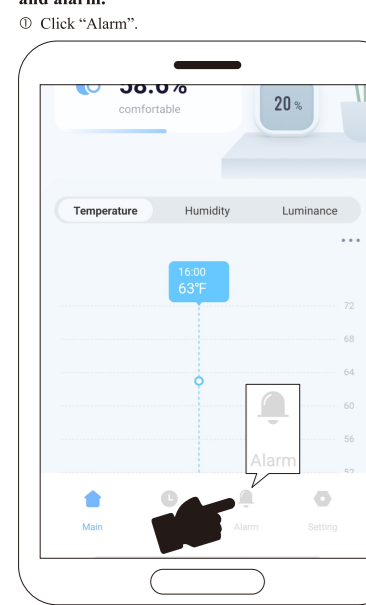


APP operation

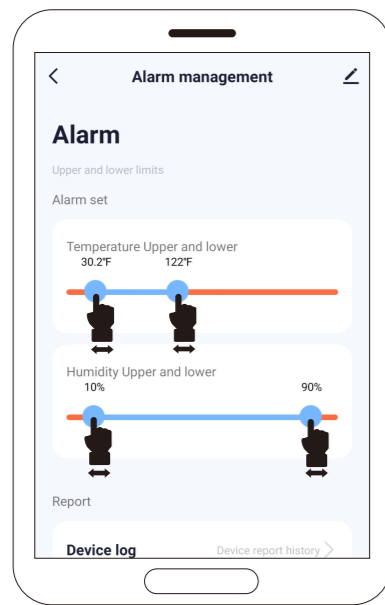
1. APP introduction.



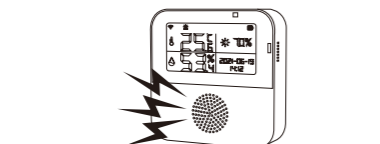
2. Set temperature and humidity alarm push and alarm.



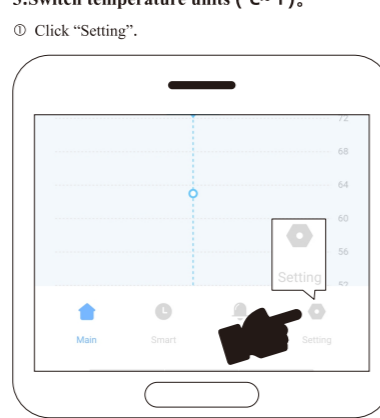
② Set the upper and lower limits of temperature and humidity.



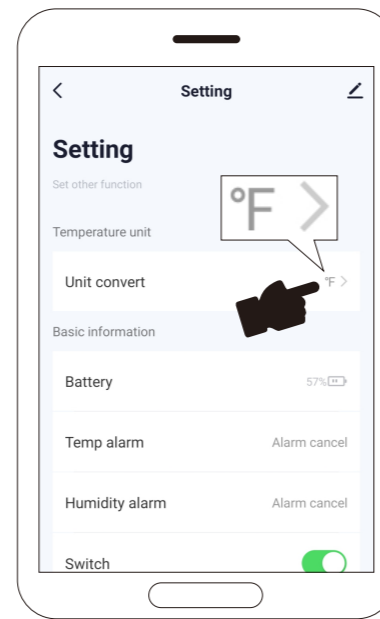
③ If the set upper and lower limits are exceeded, the equipment will give an alarm.



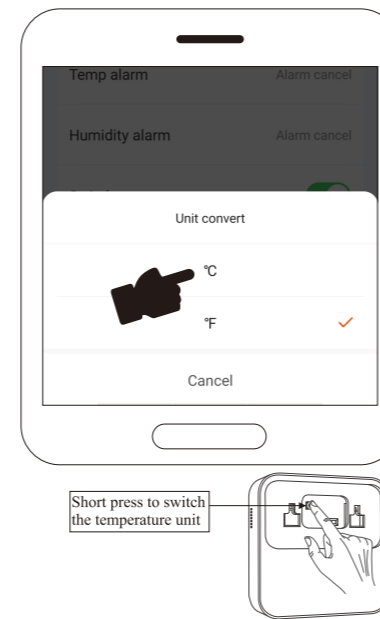
3. Switch temperature units (°C-°F).



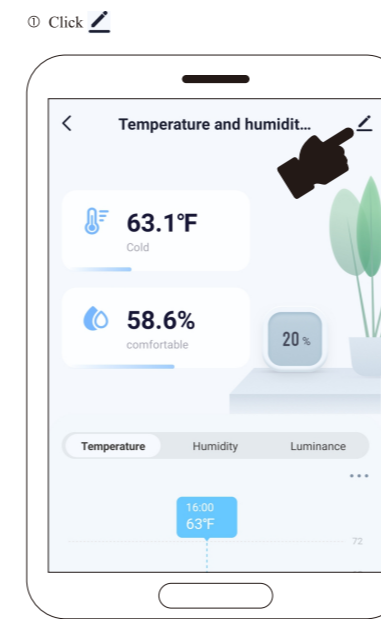
② Click "Unit convert".



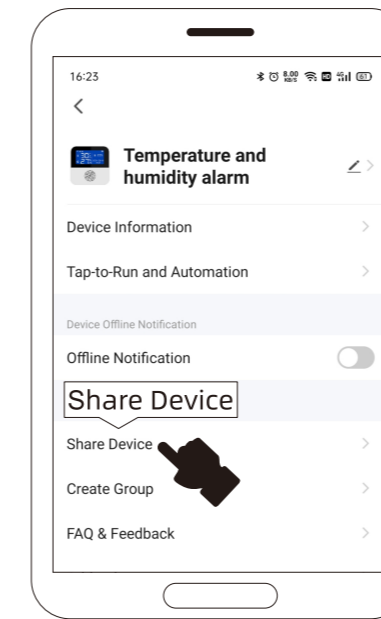
③ Switch between temperature units.



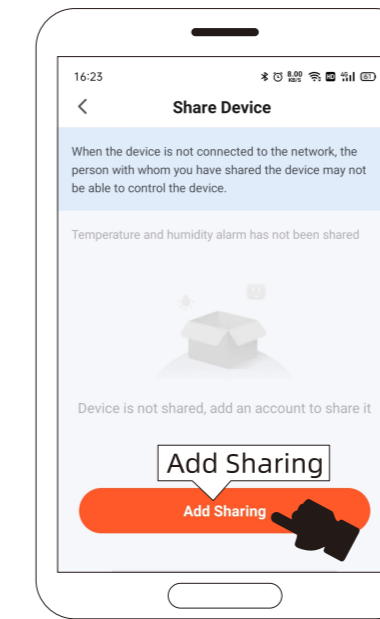
4. Share Device.



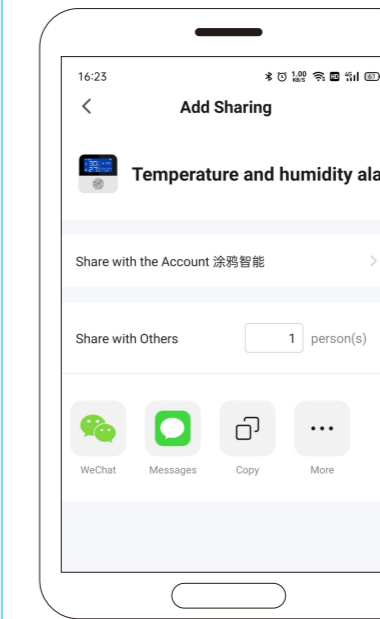
② Click "Share Device".



③ Click "Add Sharing".

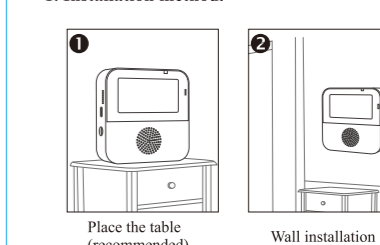


④ Choose how to share.



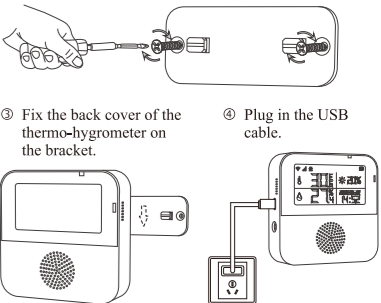
Installation

1. Installation method.



2. Wall-mounted installation method.

- Draw a line on the installation position to make a positioning hole, and then knock in the expansion pipe, as shown in the figure below;
- Use a Phillips screwdriver to screw in the screws in a clockwise direction, as shown in the figure below;



Technical Parameters

- Working voltage: 5V
- Quiescent current: 30mA
- Humidity measurement range: 0-100%RH
- Temperature measurement range: -19°C ~ 60°C (-2.2°F ~ 140°F)
- Temperature measurement accuracy: ±0.3°C
- Humidity measurement accuracy: ±2%
- Brightness measurement range: 0-100%
- Charging time: ≤2 hours
- Battery usage time: ≤4 hours (fully charged)
- Built-in battery specification: 3.7V / 500mAh (used in power failure/power off state)
- WiFi standard: IEEE 802.11 b/g/n 2.4GHz (does not support 5G)