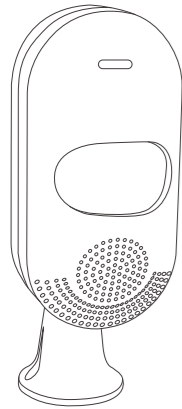
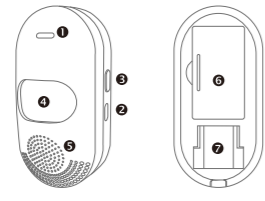


# Independent PIR Infrared Detection Alarm

user's manual

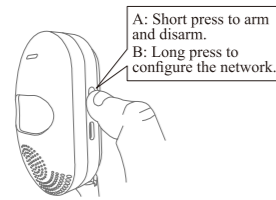


## Product Diagram



① LED lights	② USB power port
③ Set key /Arm/ Disarm/ Distribute network key	④ Detection window
⑤ Spare battery compartment	⑥ Buzzer
	⑦ Bracket slot

## Function Key Introduction

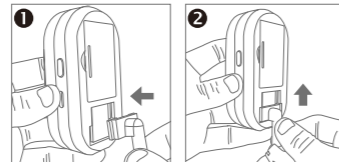


A: Short press to arm and disarm.  
B: Long press to configure the network.

Short press 1 time	Di	Enter the armed state
Short press 1 time	Didi	Device disarmed state
Long press for 5 seconds	LED light flashes continuously	Enter the distribution network

## First Use

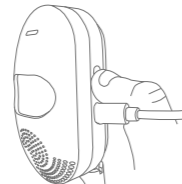
### Step 1: Mount the Brackets.



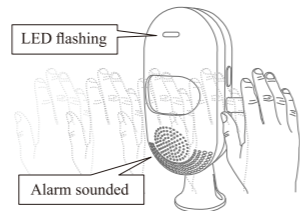
### Step 2: Power on (the indicator light flashes for 1 second).



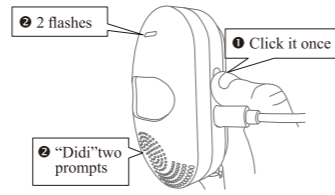
### Step 3: Operate the setting button to enter the defense state with a "beep".



## Step 4: Trigger the sensor alarm.



## Step 5: Turn off the induction alarm.



"Didi" two prompts

## Mobile APP

### 1. Download the APP.



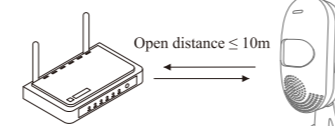
> Scan the QR code above to download.  
> Search "Tuya Smart (Smart Life)" in the App Store.

### 2. Precautions before connecting the phone.

① WiFi frequency.



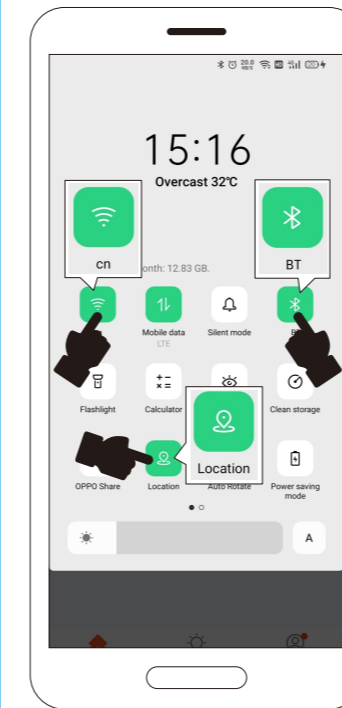
② The effective distance between the router and the infrared detector.



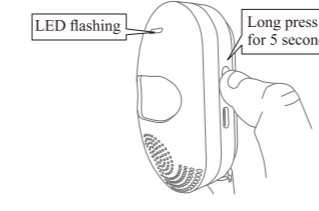
⚠ The infrared detector is too far from the router to connect to the phone.

## 3. Connect the mobile phone.

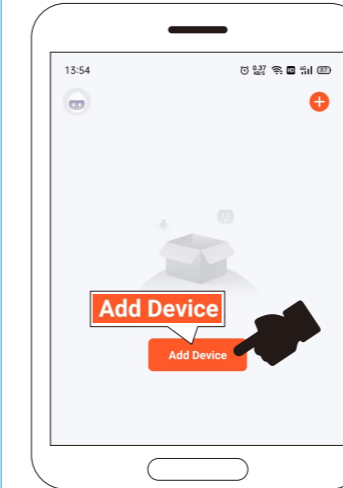
① Connect mobile WiFi / turn on BT / locate.



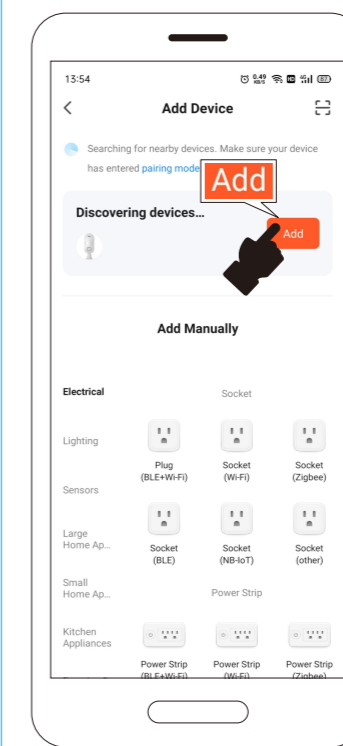
## ② Operate the product.



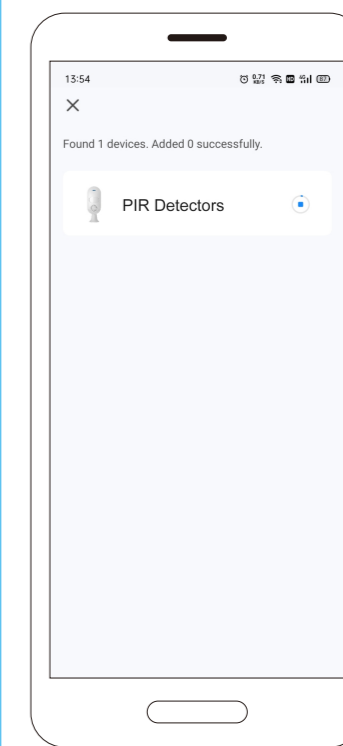
③ Open the APP and click "Add Device".



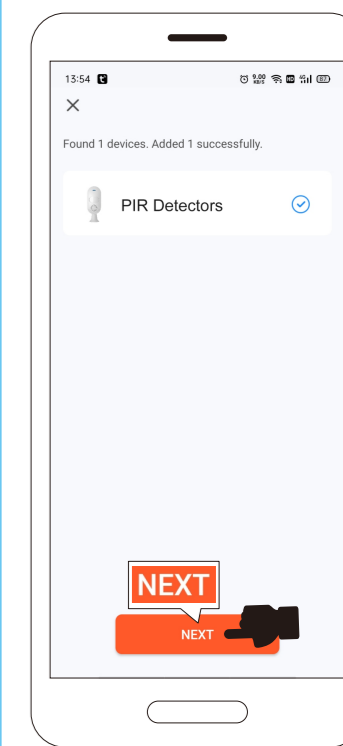
## ④ Discover the device, click "Add".



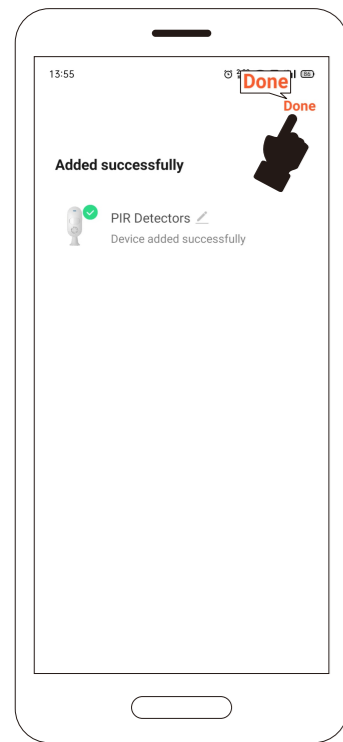
## ⑤ Show adding.



## ⑥ The addition is complete, click "Next".

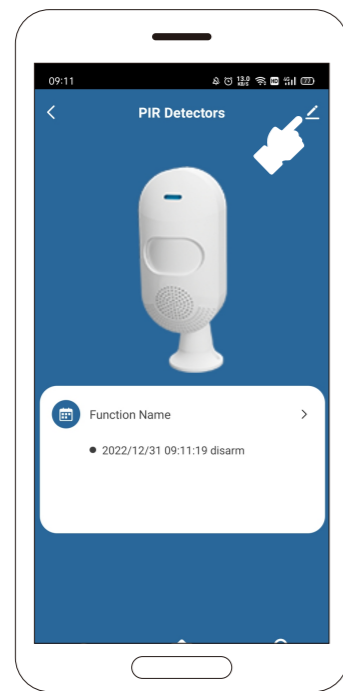


⑦ Click "Done".

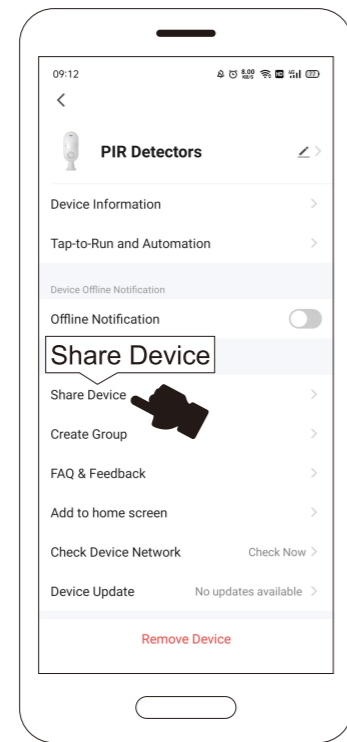


## Share Device

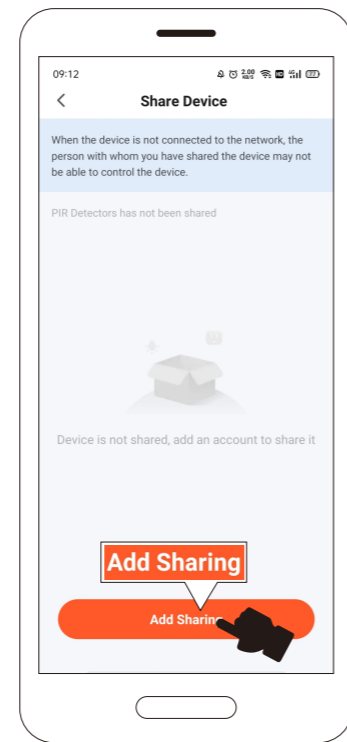
① Click [Share].



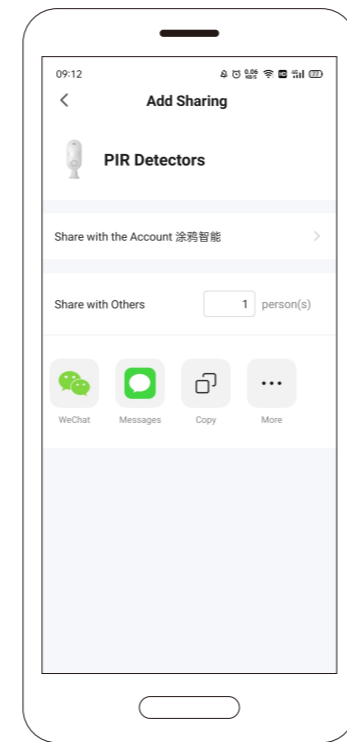
② Click "Share Device".



③ Click "Add Sharing".

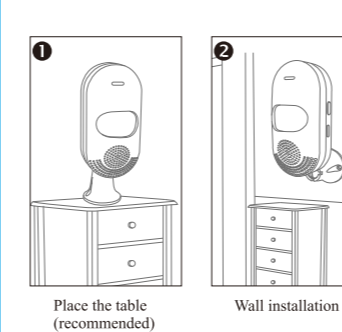


④ Choose how to share.

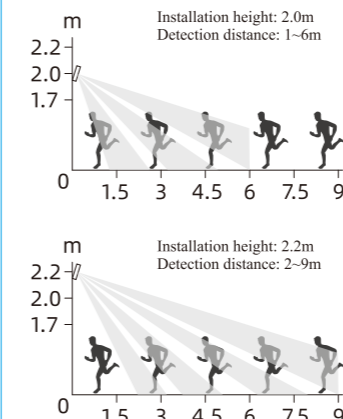
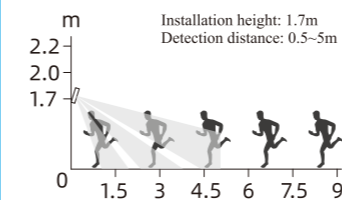


## Installation

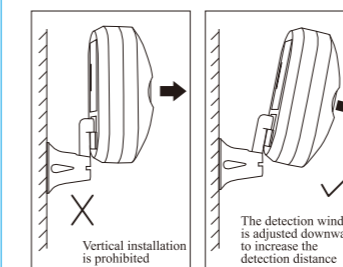
### 1. Installation method.



### 2. About the installation height (it will affect the detection distance)



### 3. About adjusting the detection distance.

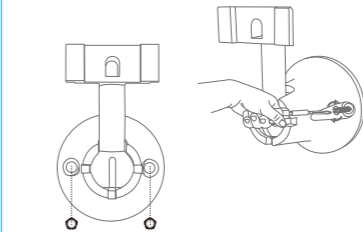


### 4. a fixed way.

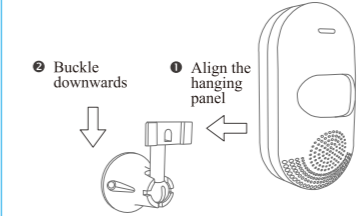
① Screw fixation.

A: Draw a line on the installation position to make the positioning hole. Then hammer it into the expansion pipe as the figure below:

B: Screw in the screws with a cross screwdriver in clockwise direction as the figure below:

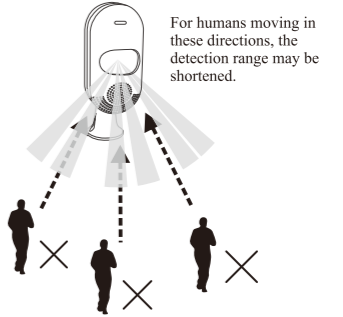
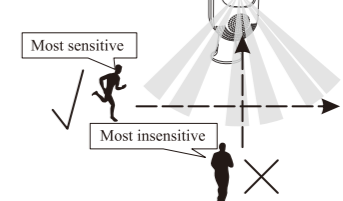


C: Shown as the figure below:



## Test Alarm

The detector has a mechanism difference in the angle of invasion.



## Common Problem

- ⚠ When the battery is dead and the USB is powered, the alarm does not sound (or makes a sizzling sound), just remove the battery and reconnect the USB cable.
- ⚠ When the power of the infrared detection alarm is lower than 20%, the APP will push a low-voltage alarm.

## Technical Parameter

- Main power supply: USB DCSV power supply
- Working voltage: 5V
- Standby current: 20mA
- Alarm current: 60mA
- Alarm sound: ≤90dB (within 1m range)
- Detection distance: 6-9m (related to installation height, environment, detection window adjustment)
- WiFi standard: IEEE 802.11 b/n/g 2.4G
- ⚠ Backup battery: LR03 AAA (2\*1.5V) (standby for 2 hours, batteries are not recommended)