

# USER MANUAL

IP CAMERA

①

## Download Yi IoT app

Scan QR code below



Search and download

Yi IoT app

In Google play

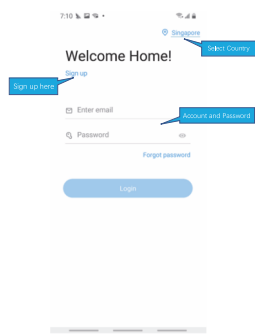


In App store



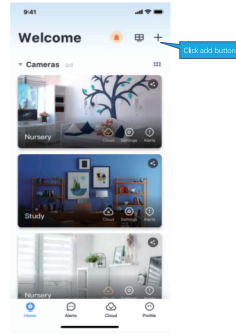
②

## Sign up and log in



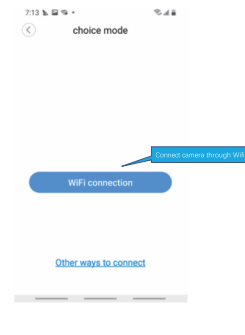
③

## How to add camera

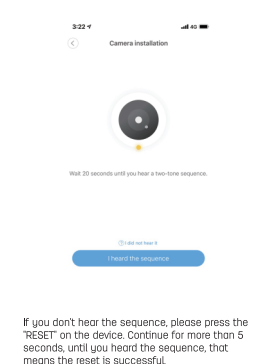


④

## How to connected with Wi-fi

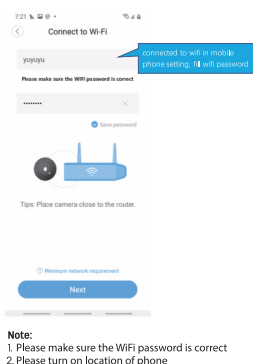


⑤



⑥

If you don't hear the sequence, please press the "RESET" on the device. Continue for more than 5 seconds, until you heard the sequence, that means the reset is successful.



⑦

**Note:**  
1. Please make sure the WiFi password is correct  
2. Please turn on location of phone



If you hear beep, press next

If you did not hear anything, click here

Next

The QR code that appears on the mobile phone is scanned against the camera lens, and the device emits a prompt sound "QR code scan successful" and "WiFi connected", click Next, and wait for the network configuration to be completed.

⑧

8:16



Pairing successful

Camera name

Smart Camera

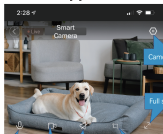
- Living room
- Front door
- Bedroom
- Kitchen
- Garden
- Patio
- Office
- Hall
- Storage

Share cameras with your family

Save

⑨

### How to use app



Camera Setting

Full screen

Voice intercom

Local record

Hear sound of device

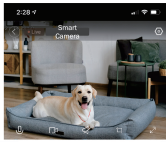
Local screenshot

PTZ control

playback

Alerts message

⑩



Alert message

Alert clip

14:24 Motion Detected Smart Camera

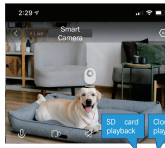
14:19 Motion Detected Smart Camera

14:15 Motion Detected Smart Camera

14:10 Motion Detected Smart Camera

14:07

⑪



Select date

From SD card

Select time

SD card playback

Cloud playback

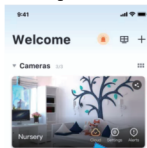
Device

Activity

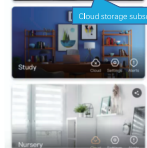
Alerts

⑫

### Cloud storage



Cloud storage subscription



Cloud storage subscription

⑬

### Common problem

**Q: The camera is or offline**

1. Check if the power supply is working properly.
2. Power off and restart the device to reconnect to the network.
3. The signal coverage is weak.
4. Signal interference shielding in special places.

**Q: How does the camera store video**

1. The camera supports the FAT32 format with a maximum capacity of 128G. After the card is recognized, it automatically records, and when the storage is full, it automatically overwrites the original recording and loops recording;
2. Support opening cloud storage service to store video;

### Special statement

The product is subject to the actual product, the instruction manual is for reference only. Mobile phone app and device firmware version support update, users can upgrade through the app.

The manual may contain technical descriptions or inconsistencies with product functions or typographical errors. Please understand, please refer to the final interpretation of our company.

Do not install the product in a place where it is damp, dusty, high temperature, flammable or explosive and out of reach of children.

⑭