

E23 ICE CREAM 220 Instruction Manual



飞行参数 Specification

翼展: 220mm
机长: 220mm
起飞重量≈ 6.8g

Wingspan: 220mm
Length: 220mm
Flying Weight≈ 6.8g

飞机材质: 高强度pp发泡板材、abs工程塑料、碳纤维

动力组: 412空心杯减速组

接收机: 微型三通道电磁舵接收机 (内置电调)

电池: 3.7V 40-60mAh 锂电池

舵机: 0.2g 电磁舵*2pcs

Material: high-strength PP foam board, ABS engineering plastic, carbon fiber

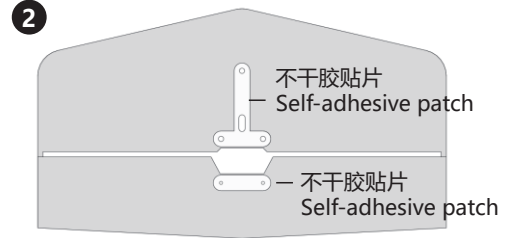
Power system: 412 brushed motor gearbox

Receiver: Micro 3-CH electromagnetic servo receiver (built-in ESC)

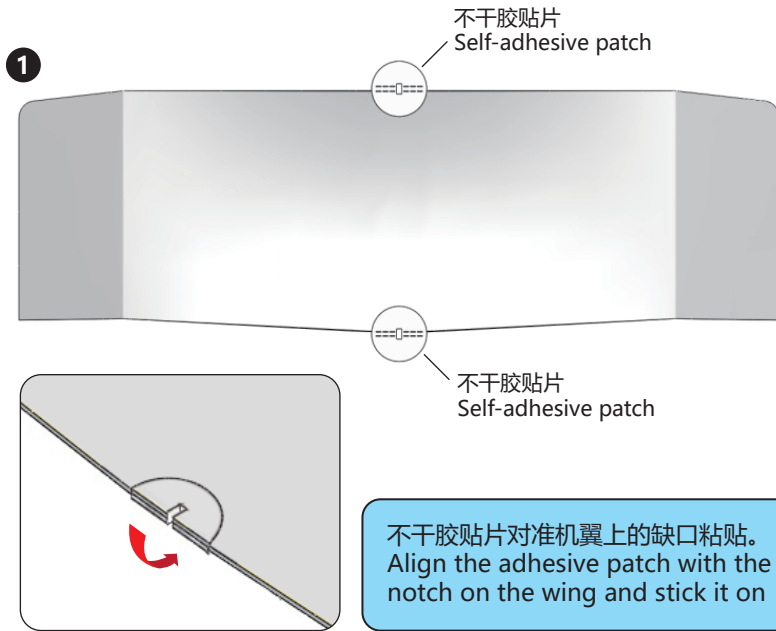
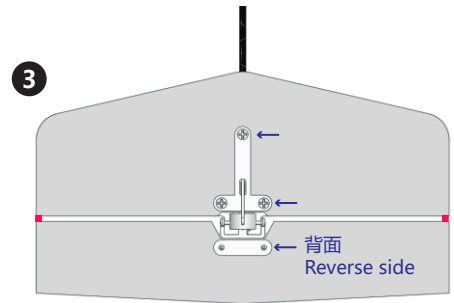
Battery: 3.7V 40-60mAh lithium battery

Servo: 0.2g electromagnetic servo *2pcs

不干胶贴片对准尾翼上的螺丝孔。在背面粘贴。
Align the adhesive patch with the screw holes on the tail wing. Paste on the back.

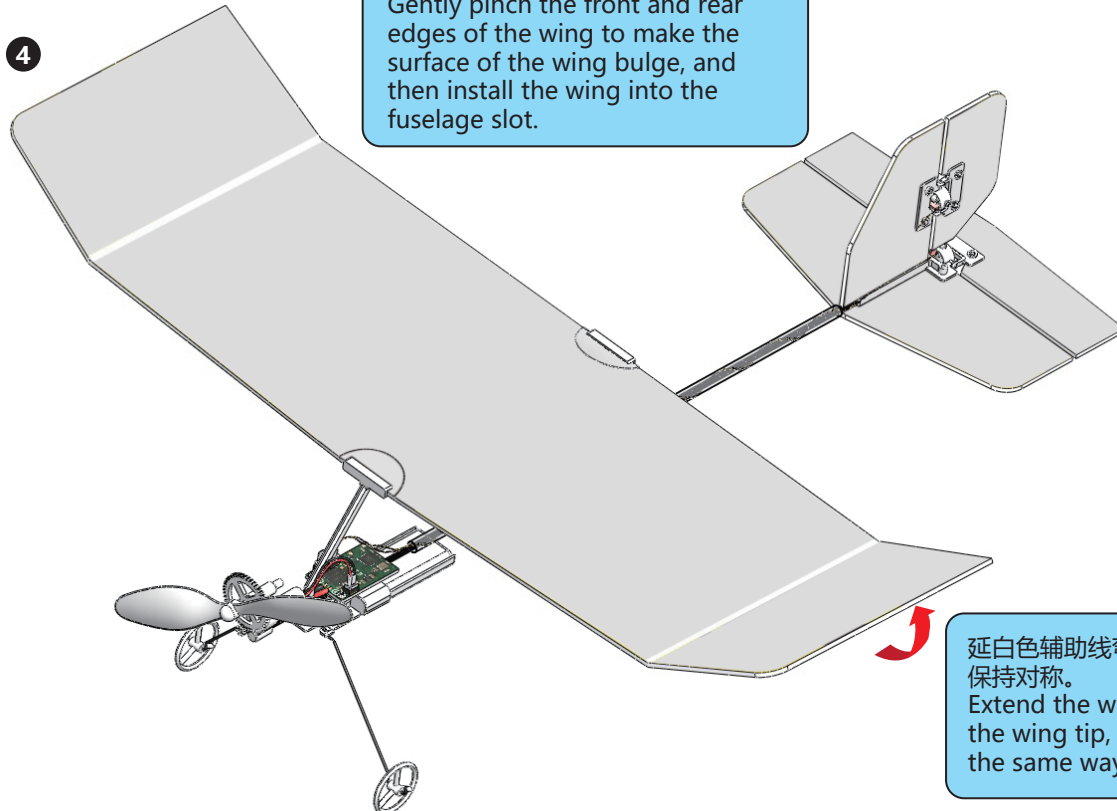


箭头位置螺丝固定到电磁舵上。红点处用美工刀切除。
Fix the screw marked by the arrow to the electromagnetic servo. Cut off the red dots with an art knife.

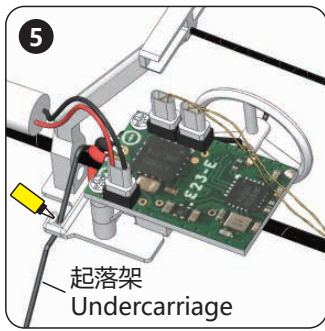


不干胶贴片对准机翼上的缺口粘贴。
Align the adhesive patch with the notch on the wing and stick it on

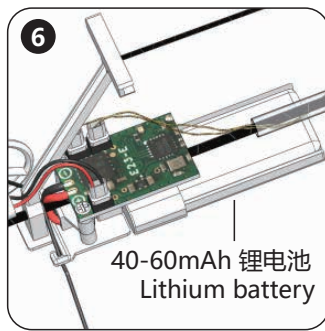
轻捏机翼前后缘使机翼上表面隆起，然后机翼装入机身卡槽。
Gently pinch the front and rear edges of the wing to make the surface of the wing bulge, and then install the wing into the fuselage slot.



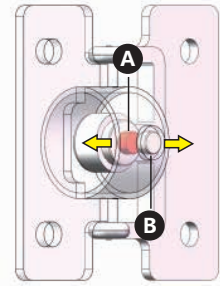
延白色辅助线弯折翼尖，左右相同操作，保持对称。
Extend the white auxiliary line to bend the wing tip, operate left and right the same way, maintaining symmetry.



起落架
Undercarriage



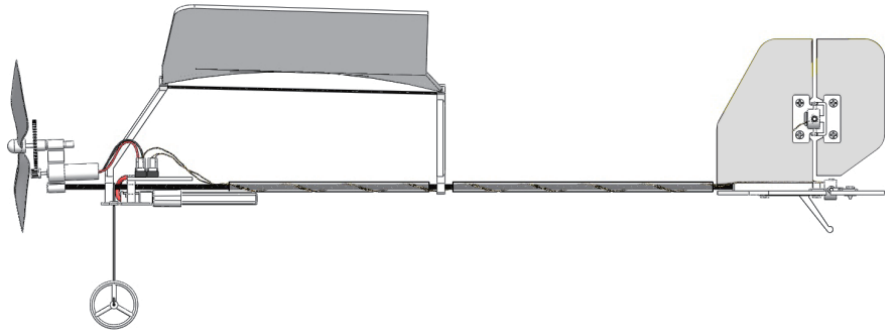
40-60mAh 锂电池
Lithium battery



A 微调磁铁
Fine tuned magnet
← 微调+
Fine-tuning +

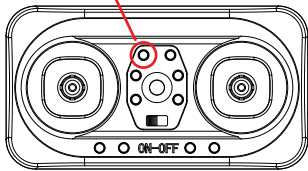
B 回中磁铁
Return magnet
→ 微调-
Fine-tuning -

垂直尾翼电磁舵不含微调磁铁
Vertical tail electromagnetic servo
without fine-tuning magnet



遥控器对频方式 Remote control frequency matching method

按住开机 Press and hold to power on



- 1 飞机接收机通电
Power the receiver
- 2 按住遥控左上按钮, 打开电源 (约3秒) ---橙色长亮
Power the transmitter ---Press and hold the upper left button to turn on the switch (about 3 seconds),and the orange light is always on
- 3 松开按钮进入对频---信号灯快闪
Release the button to enter frequency matching --- the signal light flashes quickly
- 4 对频完成 --- 信号灯长亮
Frequency matching is completed--- the signal light is always on

遥控器设置 Remote control settings

通道正/反向 Channel forward and reverse

遥控器正常使用中, 可同时按住左上和右上按钮, 同时拨动微调即可调整该通道正反向
When the transmitter is in normal use, you can press and hold the upper left and right buttons, and at the same time, you can adjust the forward and reverse direction of the channel by flipping the fine tuning

混控功能 Mixed control function

关闭遥控器。
按住右上角按钮+开机按钮 (约3秒) 切换混控模式
信号灯红色--- 无混控
信号灯黄色--- 副翼和升降混控 (三角翼混控)
信号灯橙色--- 方向和升降混控 (V尾混控)

Turn off the transmitter
Press and hold the upper right button + power on button (3s) to switch the mixed control mode
Signal light is red - no mixed control
Signal light is yellow - aileron and elevator mixed control
Signal light is orange -- rudder and elevator mixed control

遥控器提示 Remote Control Reminder

油门保护: 遥控器开机时, 油门若不在最低点, 则信号灯会闪烁并丧失所有功能, 直到油门恢复到最低点
Throttle protection: when the remote control is started, if the throttle is not at the lowest point, the signal light will flash and lose all functions until the throttle returns to the lowest point.

微调中立点提醒: 当微调到中立点时, 信号灯会闪烁几次以提示
Reminder of trim neutral point: when trim to neutral point, the signal light will flash several times to remind

低压保护: 当遥控器电池电压低于3.8V时, 遥控器黄色指示灯会闪烁以提示用户更换电池
Low voltage protection: when the battery voltage of the remote control is lower than 3.8V, the yellow indicator light of the remote control will flash to remind the user to replace the battery

控制方向测试 Control Directions Tests

	遥控器动作 Transmitter Command	飞机反应 Aircraft Reaction
升降舵 Elevator	 升降杆下拉 Lifting rod down	
	 升降杆上推 Lifting rod up	
方向舵 Rudder	 方向杆向右 Direction rod to the right	
	 方向杆向左 Direction rod to the left	

