

天气预报时钟制作套件 HU-061

Weather forecast clock production kit



HU-061 天气预报时钟制作套件(时区)

About customer service:

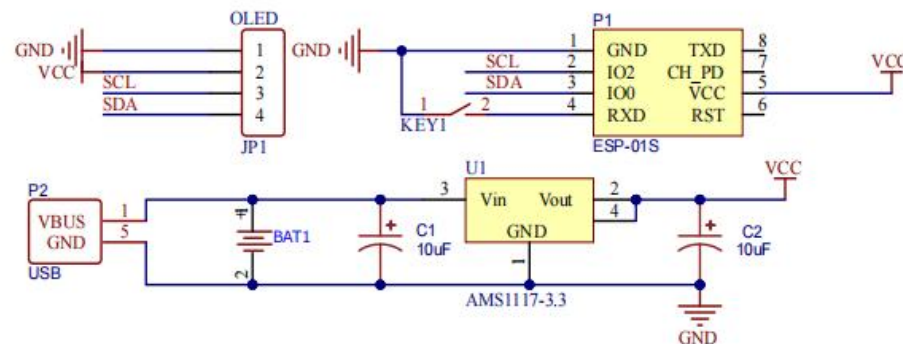
Detailed installation tutorial can be obtained by scanning QR code on mobile

Phone. →

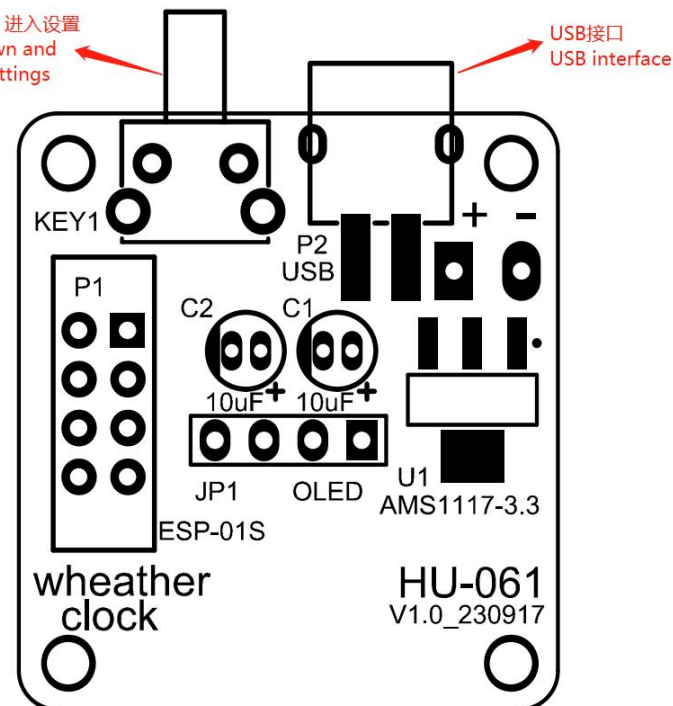
I. 元件清单 BOM

序号	名称	Name	标号 /Label	数量 /Number	备注/Note
1	直插电解电容 10uF	DIP E-capacior 10uF	C1, C2	2	引脚: 长正短负 Pin: long positive short negative
2	0.96 寸 OLED 显示屏模块	0.96 inch OLED display module	JP1	1	按丝印方向 Place the device in the direction of the graphh
3	卧式按键	Horizontal button	KEY1	1	
4	WIFI 模块	WIFI module	P1	1	
5	USB 接口	USB interface	P2	1	
6	AMS1117-3.3V 稳压芯片	AMS1117-3.3V voltage regulator chip	U1	1	
7	弯脚单排 4P 母座	Bent foot single row 4P socket	JP1	1	
8	双排 4P 母座	Double row 4P socket	P1	1	
9	USB 电源线	USB power cable		1	
10	外壳	Shell		1	
11	螺丝包	Screw bag		1	
12	电路板	PCB		1	
13	说明书	Manual		1	

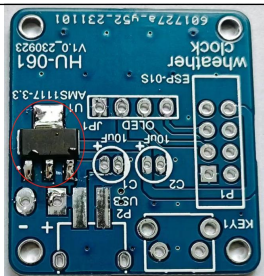
II. 电路原理&元件分布图 Schematic&Component map



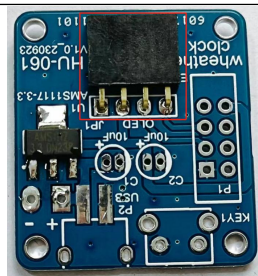
设置: 长按并重启, 进入设置
Settings: Hold down and restart to enter Settings



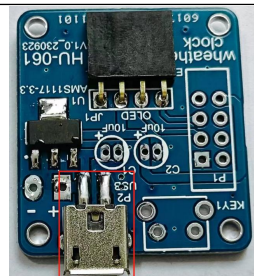
详细焊接&外壳组装步骤请扫描二维码查看图文教程。 For detailed welding & shell assembly steps, please scan the QR code to view the graphic tutorials.



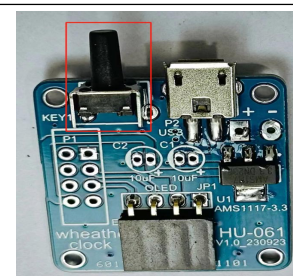
1. 焊接 AMS1117-3.3 稳压芯片。
Weld the AMS1117-3.3 voltage regulator chip.



2. 焊接弯角单排 4P2.54mm 母座
Welded single row 4P2.54mm female base.



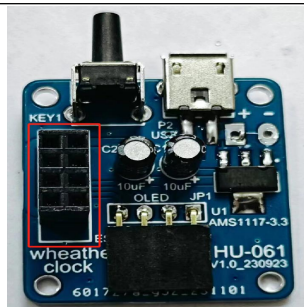
3. 焊接贴片 USB 接口母座。
Solder patch USB port motherboard



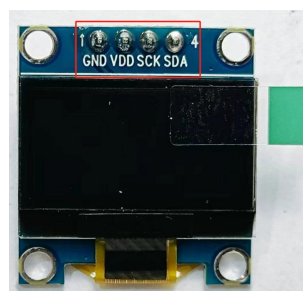
4. 焊接卧式侧按键。
Soldered horizontal side buttons.



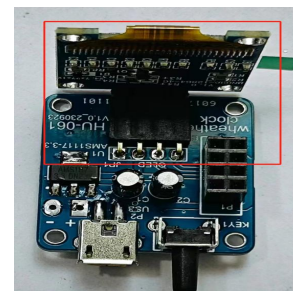
5. 焊接直插电解电容（引脚长正短负）。
Solder in-line electrolytic capacitors (pin length is positive and short is negative).



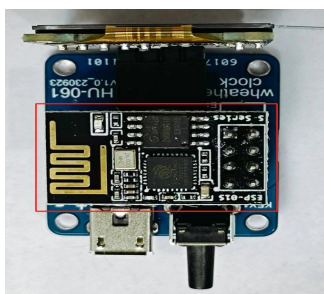
6. 焊接双排 4P2.54mm 母座。
Weld double row 4P2.54mm female base.



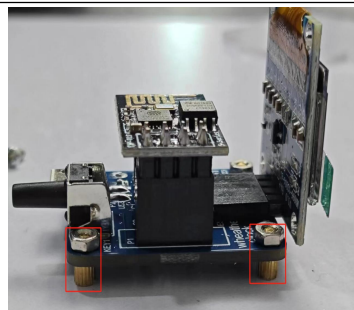
7. 焊接 OLED 屏 4P 排针。
Solder OLED screen 4P row pin.



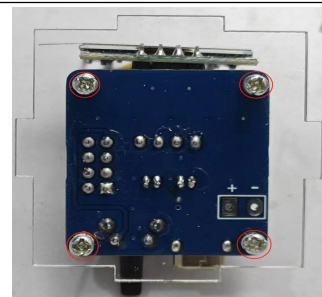
8. 如图插上 OLED 屏幕。
Plug in the OLED screen.



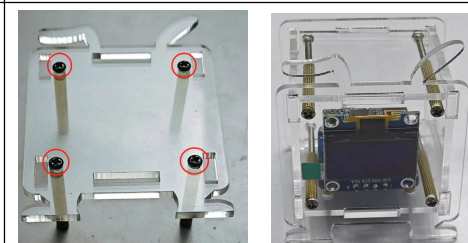
9. 如图插上 8266WiFi 模块。
Plug in the 8266WiFi module.



10. 用铜柱和 M2 4mm 螺母固定 PCB 四个角。
Fix the four corners of the PCB with copper posts and M2 4mm nuts.



11. 用 M2 螺丝将 PCB 固定到亚克力底面外壳上
(注意方向, 正面更宽, 后面更窄)。
Attach the PCB to the acrylic bottom shell with M2 screws (Pay attention to the direction, the front is wider and the back is narrower)



12. 用 M2 5mm 螺丝和铜柱固定正面亚克力外壳, 组装好亚克力, 用 M2 22mm 螺丝进行固定。
Fix the front acrylic shell with M2 5mm screws and copper columns, assemble the acrylic and secure it with M2 22mm screws.

Instructions for use

I. Weather Clock connected to the power supply, in the cell phone search for WF signal, find WIFI name for HXFB-Weather Clock and click to connect (note that after the connection will prompt the Internet is not available, because this is the clock to create their own hotspot)



Second, open the cell phone browser, in the address bar, enter 192.168.4.1 or directly click on the WF name HXFB-Weather Clock to enter the configuration interface

✕ ⓘ 192.168.4.1

🔍 ::



Configure KEY&ID

Configuring WiFi

Device Information

Reboot Device

Click

Jump

Click on the configuration of WIFI, find the WIFI can be connected to connect (note that only 2.4G band 5G band does not support)

✕ ⓘ 192.168.4.1

🔍 ::

hcxp	100%
CMCC-4hnp	100%
CMCC-Qrr9	100%
CMCC-7jgm	100%
ChinaNet-k3dw	92%
TP-LINK_2270	88%
CMCC-3Cr3	76%
CMCC-Eg7p	72%
ChinaNet-PmfN	68%
CMCC-xVw3	66%
WIFI-53A5E4	60%
cloudbox-034454	56%
huchunping88	54%
FK-8W0-5640	30%
850	28%
8501	26%

SSID **Enter WIFI name**

password **Enter WIFI password**

Confirm save

After connecting to WIFI successfully, the clock will enter the display interface, but because we have not entered the weather KEY and city ID, so the weather information will display N/A at this time

III. Click Configure KEY&ID, enter the acquired weather KEY and city ID.

192.168.4.1



KEY need to register and wind weather account to get access to the Kazunami weather secret key KEY (registration URL <https://id.gweather.com/#t/register>) for example: b5857877c21c4f3***6d how to register please see another tutorial

192.168.4.1



Click Configure KEY&ID

Jump

KEY(Unchanged)Register and Windy Weather Account Getting

ID(Unchanged)Check city ID

Configuring WiFi

Confirm save

Device Information

Reboot Device

Query the required city ID City ID query method China Weather Network - the last 9 digits of the city's website

City ID query method

Skynet China <http://www.weather.com.cn/weather1d/101210901.shtml>

Home Forecast

Forecast

National > Zhejiang > Jinhua > City

11:30 updated | Data from the National Meteorological Observatory

After completing the three steps of WIFI connection, entering weather KEY and city ID, the clock will be displayed normally

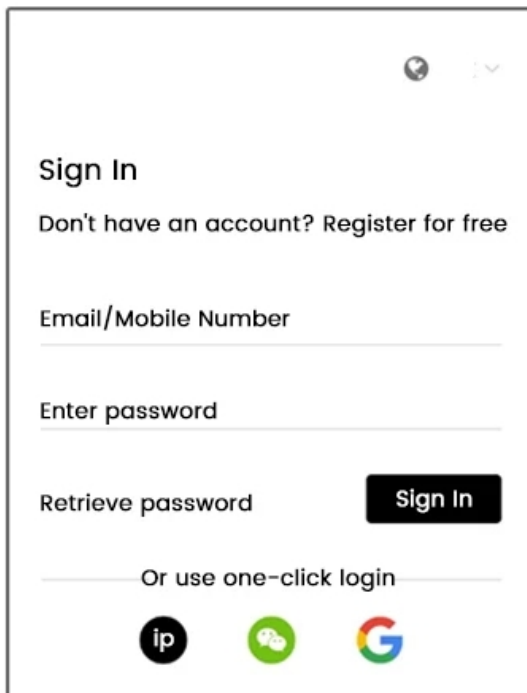


Get Weather KEY Tutorial

Register for a Weather account

Register at <https://id.gweather.com/#/register>

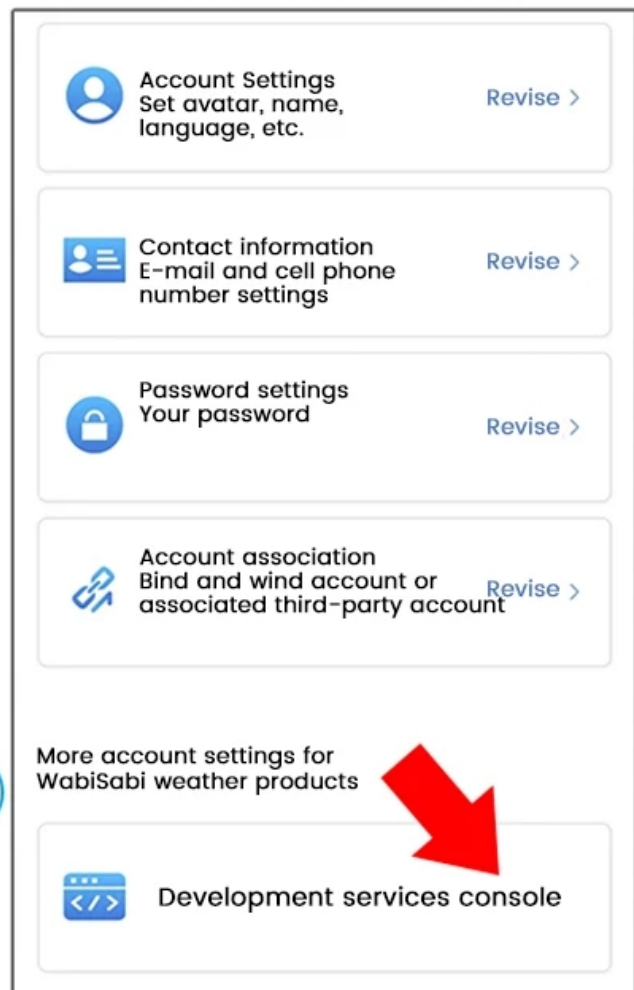
Before registering, you need to switch back to your own WIFI or traffic data, because you are now connected to the HXFB-Weather Clock hotspot is not available to the Internet, it is recommended that the registration operation on the computer!



The screenshot shows the registration page with the following elements:

- Header: "Sign In" and "Don't have an account? Register for free"
- Input fields: "Email/Mobile Number" and "Enter password"
- Buttons: "Retrieve password" and "Sign In"
- Footer: "Or use one-click login" with icons for IP, WeChat, and Google.

1. Register for an account and log in

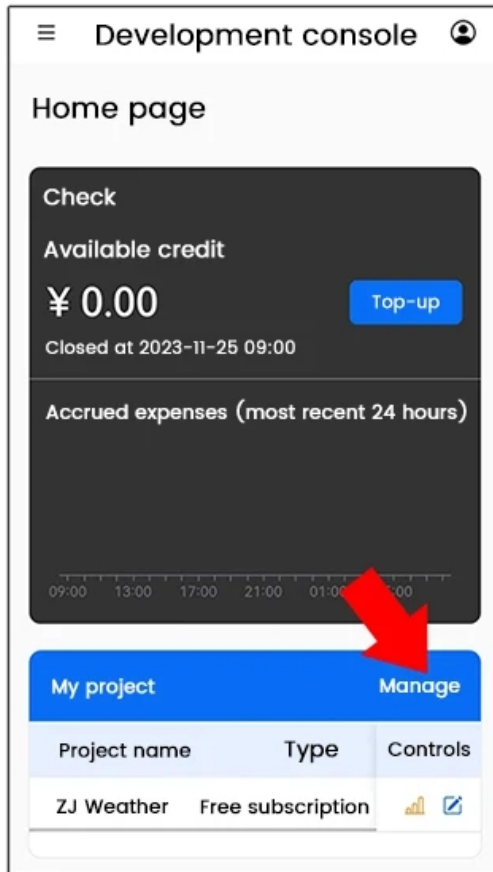


The screenshot shows the account settings page with the following elements:

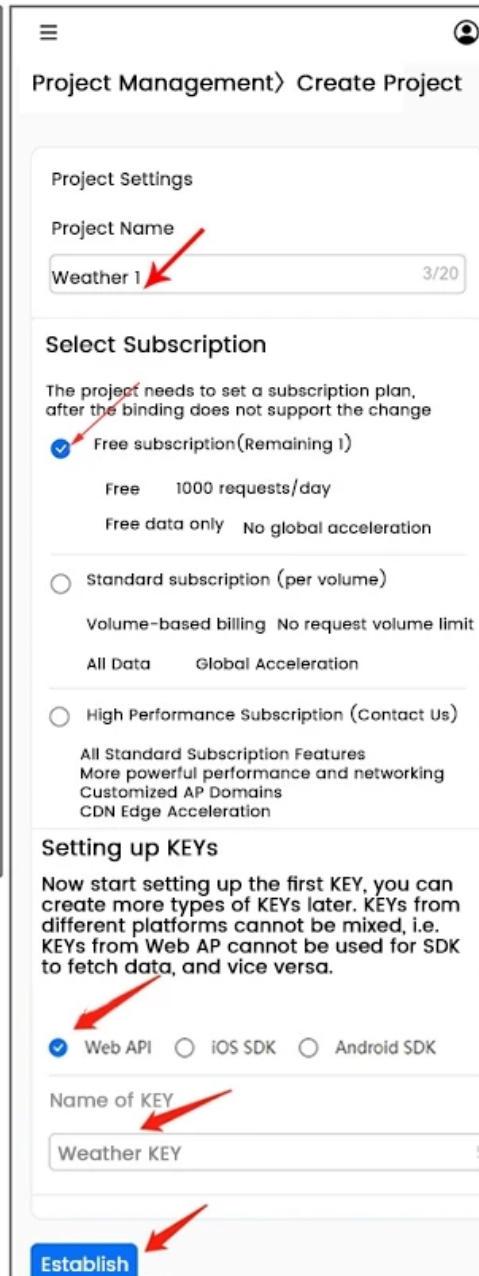
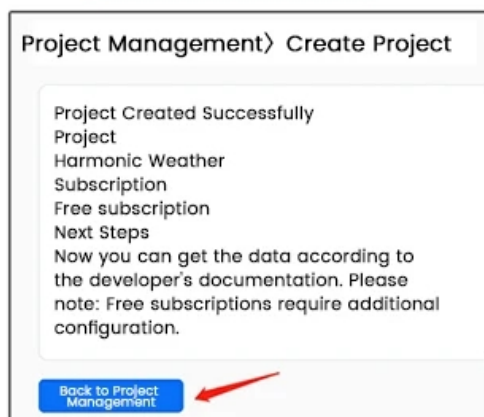
- Account Settings: Set avatar, name, language, etc. (Revise >)
- Contact information: E-mail and cell phone number settings (Revise >)
- Password settings: Your password (Revise >)
- Account association: Bind and wind account or associated third-party account (Revise >)
- More account settings for WabiSabi weather products
- Development services console (indicated by a red arrow)

2. Click the Development Service Console

3. Click Management--Setup Items



4. create a successful click
back to the project



5. Click to view, you can view the weather KEY

Project management

Peaceful weather Add KEY Edit

KEY name	Public ID	KEY	Style	Operate
Weather KEY	HE2310291742541990	Check	Web API	

6. After the completion of this string of characters is to use the weather secret key KEY

HE2310291742541990 Web API

Private KEY

9896d5af934044 a9

Off