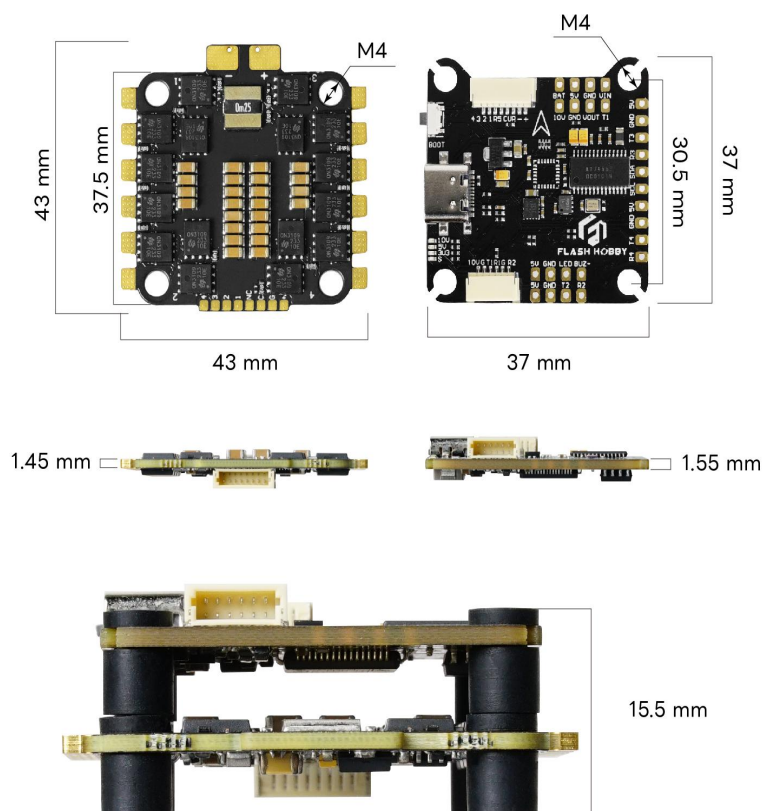
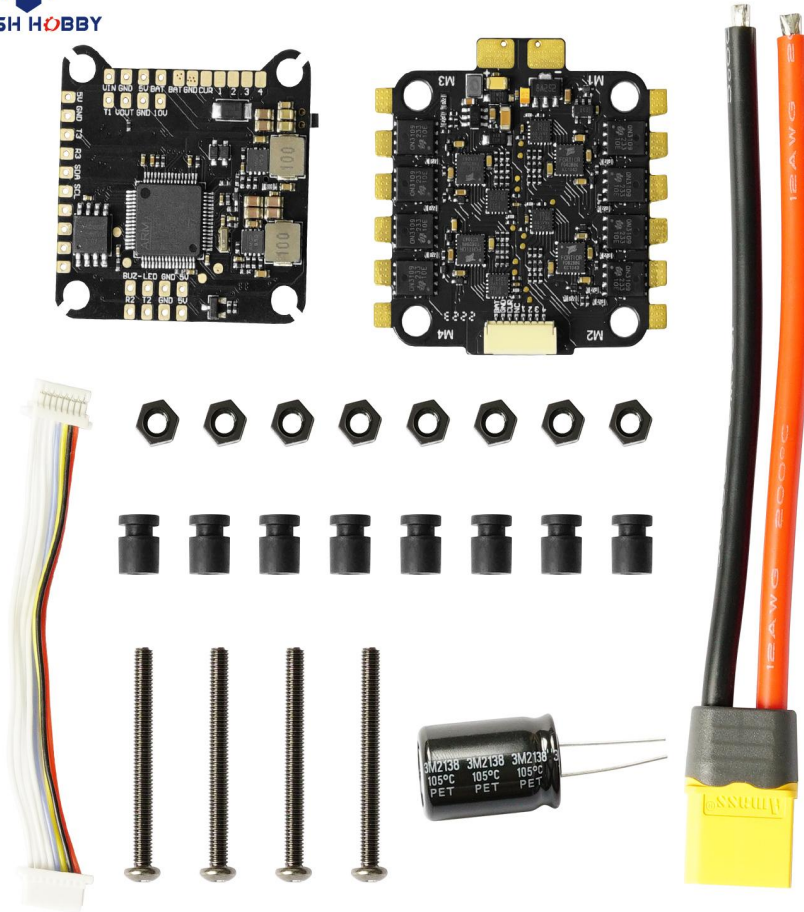


# Specifications

<b>Product Name</b>	<b>FLASH HOBBY F405 30.5x30.5 Flight Controller</b>
MCU	STM32F405
IMU(Gyro)	ICM42688
USB Port Type	Type-C
Barometer	BMP280
OSD Chip	BetaFlight OSD w/ AT7456E chip
DJI Air Unit Connection Way	Two ways supported: 6-pin connector or direct
6-pin DJI Plug	Supported. Completely compatible with DJI O3/RunCam Link/Caddx Vista/DJI Air Unit V1, no wire is needed to be changed.
Black box	16M Black Box
Current Sensor Input	Supported. For 50A ESC, please set scale = 180 and Offset = 0.
Power Input	3S - 6S Lipo(Through ESC 8-PIN connector)
5V BEC Output	5 groups 5V output, the total current load is 3A
9V Output	3 groups 9V output, the total current load is 2.5A
3.3V Output	1 group 3.3V output, maxmum current is 300mA
ESC Signal	M1 - M4
UART	6 sets(UART2 UART5, UART3), UART6(Dedicated for SBUS), UART4(Dedicated for ESC telemetry),UART1 (Dedicated for VTX data setting)
Sbs	Debugging to UART6 Channel
ESC Telemetry	UART R4(UART4)
I2C	Supported. SDA & SCL pads on front side. Used for magnetometer.
LED Pad	Supported. LED,5V, and GND pads on bottom of the front side. Used for WS2812 LED controlled by Betaflight firmware.
Buzzer	supported, 5V,BZ pads for 5V Buzzer
BOOT Button	Supported.
	[A]. Press and hold BOOT button and power the FC on at the same time will force the FC to enter DFU mode, this is for firmware flashing when the FC gets bricked.
	[B]. When the FC is powered on and in standby mode, the BOOT button can be used to controller the LED strips connected to LED1-LED4 connectors on the bottom side. By default, short-press the BOOT button to cycle the LED displaying mode. Long-press the BOOT button to switch between SpeedyBee-LED mode and BF-LED mode. Under BF-LED mode, all the LED1-LED4 strips will be controlled by Betaflight firmware.

Supported Flight Controller Firmware	BetaFlight(Default),
Firmware Target Name	STM32F405
Mounting	30.5 x 30.5mm( 4mm hole diameter)
Dimension	37(L) x 37(W) x 6.6(H)mm
Weight	7.5g
<b>Product Name</b>	<b>FLASH HOBBY BLS 60A 30.5x30.5 4-in-1 ESC</b>
Firmware	BLS 16.7
PC Configurator Download Link	<a href="https://esc-configurator.com/">https://esc-configurator.com/</a>
Continuous Current	60A * 4
Burst Current	65A(5seconds)
TVS Protective diode	Yes
External Capacitor	35V560uF Low ESR Capacitor(In the package)
ESC Protocol	DSHOT300/600
Power Input	3-6S LiPo
Power Output	VBAT
Current Sensor	Support (Scale=180 Offset=0)
ESC Telemetry	Not supported
Mounting	30.5 x 30.5mm( 4mm hole diameter)
Dimension	42.3(L) * 37(W) * 6.2mm(H)
Weight	12g





### Wire Diagram

