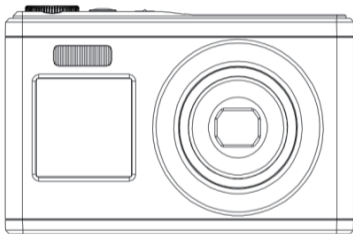


Digital Camera



Please read this manual carefully before use
Please keep this manual safe for future reference

Explain

Please use this camera in the following order



Attention: Newly purchased memory cards or memory cards used on other digital cameras/electronic products. To use it on this device, please format it with a computer or camera first. Please backup important data on your computer or other media before formatting.

Camera maintenance

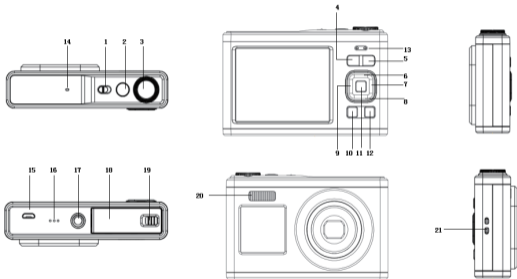
- When not in use, place in a dry place and remove the battery
- When using, please attach the lanyard to the machine and always wear a wrist strap to avoid slipping off
- Use appropriate protective covers to avoid scratching the lens and display screen.
- To clean the surface of the lens, the sand and dust on the surface should be blown away first, and then the lens should be lightly wiped with a cloth or tissue suitable for cleaning optical equipment. If necessary, please use lens cleaner. Do not use organic solvents to clean the camera.
- Do not touch the surface of the lens with your fingers, as dirty lens glass can affect imaging quality.

Features

This camera has multiple features and functions

- 2.88-inch IPS high-definition screen+1.58-inch IPS high-definition screen
- 10x optical zoom+6x digital zoom
- Maximum photo resolution (60 million pixels)
- Video resolution up to 4K
- Massive storage (removable disk)
- Webcam function
- 8-speed rotary switch

Product component structure



Serial number	Name	Function
1	Power button	Turn on/off
2	Camera button	Take photos; Recording videos; Quick Return photo mode
3	Rotate the switch key	Can choose a profile
4	W key	Reduce focus/photo/video playback sound
5	T key	Enlarge focus/photos/increase video playback sound
6	Up key	Up arrow key; Quickly enter playback mode
7	Right click	Right arrow key; Forced on/off/automatic fill light of fill light
8	Down key	Down arrow key; Delete Shortcut Button
9	Left click	Left arrow key; Macro button
10	Menu key	Open or exit menu
11	OK key	Confirm button
12	Self capture screen switch button	Switch size screen

13	Indicator light	The yellow light represents the working status indicator light (power on/off/taking photos), and the red light represents the charging indicator light. When charging, the red light comes on, and when fully charged, the red light automatically turns off
14	MIC hole	Pickup
15	USB	Charging/transmitting data
16	Horn hole	Sound extension
17	Tripod interface	Tripod interface
18	Battery cover	Battery and SD card locations
19	Battery cover push button	Opening the battery cover position
20	LED lights	LED fill light
21	Hanging rope hole	Can be attached to the camera strap

Getting Started

Battery installation/removal



1. Push and twist the battery cover to the left to open it



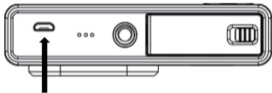
3. Close the battery cover and push the button to the right



2. Battery electronic contact direction

Charging

Please use a Micro USB charging cable and charger for charging.



Charging/data transmission interface

1. When charging, the indicator light will turn on red.
2. After fully charging, the red indicator light will turn off.

Kind reminder: The charging light flashes slightly, indicating that the battery is not installed or reversed. Please check if the battery is installed correctly

SD card installation/removal

Install SD card: Please first follow the OPEN label on the bottom of the camera to open the battery cover, press the back of the SD card towards the screen, and then push it all the way towards the inside of the SD card slot until you hear a "click" sound, which completes the installation. Remove SD card: Please push the SD card towards the inside of the card slot until you hear a "click" sound to remove the SD card.

Attention:

1. Before replacing the memory card, please turn off the camera power.
 2. Please insert the card in the correct direction and do not use too much force to avoid damaging the card or related components. SD card cannot be inserted, please check if the direction is correct.
 3. If you are using an SD card for the first time or have used it on another device, please format the SD card in the camera first!
-

Turn on/off

Power on: Turn the power button to the right to turn on the camera.

Shutdown: When turned on, turn the power button to the left to turn off the camera; In idle mode, if no action is taken within the set automatic shutdown time, the camera will automatically shut down to save power. If you want to restart the camera after automatic shutdown, you need to turn the power button towards the shutdown direction and then back towards the startup direction to start the camera.

Date and time settings

When starting the device for the first time, you can directly set the date and time, or press the photo button to exit the settings. In the photographing/recording mode, press the Menu key to open the menu settings, and then select Settings ▢ Date/Time ▢ Set Date and Time. In the menu settings, you can open the date tag and select whether to turn on or off the date and time.

Photo Mode



How to take photos

The default shooting mode is when turning on the phone. Simply press the shooting button to focus on the captured object, and then press the shooting button again to take a photo. By default, the camera has sound effects enabled, and when taking a photo, hearing (clicking) indicates that the photo was taken successfully. You can also choose to delay selfie in the photography menu and start selfie after 2s, 5s, or 10s.

Kind reminder: When taking photos, it is necessary to keep the camera fixed or use a tripod bracket to fix it, otherwise it may cause blurring of the photo.

Camera Mode Menu

In photographing mode, press the Menu key to open the menu setting of photographing mode



Serial number	Menu Name	Explain
1	Resolving power	60M:9152*6864;48M:8192*6144; 36M:7088*5312; 24M:5792*4344;20M:5152*3864;16M:4608*3456; 12M:4000*3000;8M:3264*2448;5M:2592*1944
2	Anti hand shock	Prevent camera vibration from affecting image clarity
3	Selfie	Set the self timer countdown time to: off/2s/5s/10s

4	Color	Optional filter color
5	Continuous shooting	Can take 3 consecutive photos
6	Image quality	High quality/standard/economy
7	Sharpness	Strong/Standard/Soft
8	White balance	Automatic/Daylight/Cloudy/Tungsten filament lamp/Fluorescent lamp
9	Date label	Can choose to print date or date/time
10	ISO	Automatic/100/200/400/800/1600
11	Exposure compensation	EV-3~EV+3
12	Face recognition	Automatic detection and tracking of faces in images
13	Photometry	Automatically measure the light intensity within the viewfinder range

Record Mode



How to record a video:

1. Press the OK key to switch to recording mode, press the take photo key to start recording, and a red dot will flash in the upper left corner of the screen. The indicator light will slowly flash, indicating that recording is in progress.
2. During the recording process, press the T or W keys to perform digital zoom, and then press the capture button to end the recording.

Recording mode menu

In recording mode, press the menu button to open the menu settings for recording mode

Serial number	Menu Name	Explain
1	Video resolution	4K: 3840 * 2160; FHD: 1920 * 1080; HD: 1280 * 720
2	White balance	Automatic/Daylight/Cloudy/Tungsten filament lamp/Fluorescent lamp
3	Exposure compensation	EV-3~EV+3
4	Recording audio	Optional recording sound
5	Date label	Can choose to print date or date/time

Playback mode

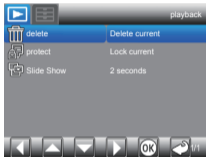
How to replay

1. Press the up arrow key to quickly enter playback mode or press the OK key to switch to mode, and press the left/right keys to browse photos/videos.
2. During the browsing process, press the W key to exit the file and view all files. Then, press the up/down/left/right keys to select, and then press the OK key to confirm viewing the file.
3. During the browsing process, press the T key to zoom in on the current photo, and then drag the photo up/down/left/right to view it.

Playback Mode Menu

In playback mode, press the Menu key to enter the playback menu, and press the up/down left/right button to select Menu, press the OK key to save the settings, and then exit the menu with the Menu

key. You can delete video files, protect videos and slide shows. When the slide shows, press the OK key to exit from the current browsing file.



Serial number	Menu Name	Explain
1	Delete	Delete current/all images or videos
2	Protect	Automatic/Daylight/Cloudy/Tungsten filament lamp/Fluorescent lamp
3	Slide Show	2s/5s/8s

Camera System Settings

In different modes, you can press the Menu key to open the system menu, press the right key to switch to the system settings, press the up/down key to select the menu, press the OK key to enter the submenu, press the up/down key to select the desired setting, and then press the OK key to save the setting. Finally, press the Menu key to exit the setting.

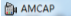
Serial number	Menu Name	Explain
1	Date/Time	Time setting
2	Automatic shutdown	Off/1 minute/3 minutes/5 minutes/10 minutes
3	Reminder tone	Opening/closing of operation sound
4	Language settings	Multiple languages
5	Light source frequency	50Hz/60Hz
6	Format	Memory card formatting
7	Default setting	Factory reset

Download photos and videos to your computer

After connecting the camera to the computer, press the power button to turn on the camera and select memory on the machine. When selecting storage, the camera will connect to the computer to generate a removable disk. Please open a new removable disk in "My Computer". The photos or videos created by the camera will be saved in DCIM, and users can copy the files to their computer.

Note: Do not disconnect the camera from the computer when downloading files. To prevent data loss, do not insert or remove a storage card from the camera when the USB is connected to the computer.

Webcam function

After connecting the camera to the computer, press the power button to turn on the camera and select camera mode on the machine. The first time you use the computer, the driver files will be automatically installed. After the computer successfully installs the driver files, click the shortcut icon  to open the AMCAP window. The image corresponding to the camera lens will be displayed in the AMCAP window. When the AMCAP software is not opened, the camera function can also be used to transfer video images over the network. (Note: AMCAP software needs to be downloaded on the internet)



Product specifications

Image sensor	CMOS Sensor
Image resolution	50M:8352*6256;48M:8192*6144; 36M:7088*5312; 24M:5792*4344;20M:5152*3864;16M:4608*3456; 12M:4000*3000;8M:3264*2448;5M:2592*1944
Video resolution	4K: 3840 * 2160; FHD: 1920 * 1080; HD: 1280 * 720
LCD display	2.88-inch IPS high-definition screen+1.58-inch IPS high-definition screen
External storage	SD memory card (up to 256GB)
Digital zoom	16x digital zoom
Exposure	EV-3- EV+3
White balance	Automatic/Daylight/Cloudy/Tungsten filament lamp/Fluorescent lamp
ISO	Automatic/100/200/400/800/1600
Capture Mode	Single shot, selfie, continuous shot, timed 2/5/10 seconds
File format	JPG, MP4
Anti hand shock	Support
Flash	Auto/Flash Off/Force Flash
Color	Multiple filter colors

Frequently asked questions

The camera cannot start after installing the battery	The battery is low, please replace it with a new one
	The battery packaging has not been removed.
	If the battery is installed backwards or not in place, please confirm that the battery installation method is correct.
Pressing the camera button cannot take or record photos	The built-in memory is full. Please save the shooting files to another storage device
	The storage card is not installed properly. Remove and reinstall the storage card.
The photos taken are blurry	Hands tremble when taking photos. Please hold the camera firmly with both hands or use other objects such as a tripod to stabilize the body. Do not shake the camera when taking photos
The photos or videos taken are dim	Insufficient lighting in the shooting environment. Please shoot in a well lit area or use lighting to increase the brightness of the light

<p>Camera automatically shuts down</p>	<p>The battery is low, please replace it.</p>
	<p>To save electricity, if there is no operation for more than 1 minute (3 minutes or 5 minutes, depending on the settings), the camera will automatically shut down according to the settings. If you want to restart at this time, please first turn the power button to the left to shut down, and then turn it on to the right.</p>
<p>Camera crashes or screen blurs</p>	<p>The memory card format is incorrect. Please format the memory card in the camera or computer before using it.</p>