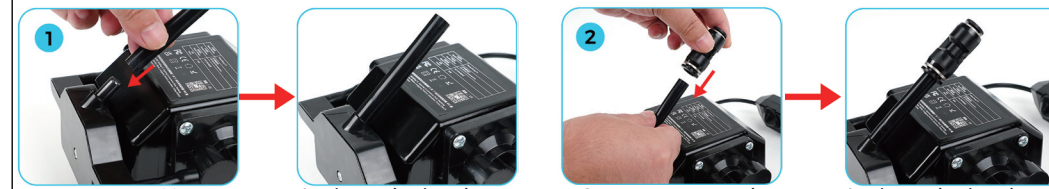


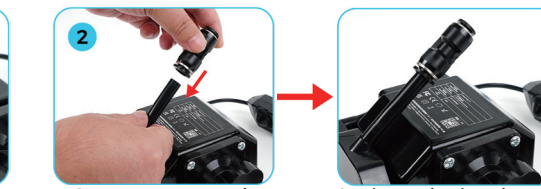


Air pump installation instructions



1 Connect the silicone tube ID 8 OD 10 L70mm to the air pump.

As shown in the picture



2 Connect pneumatic fitting reducer PG 10-8 to silicone tube

As shown in the picture



3 Connect the silicone tube ID6 OD 8 L2500mm to the pneumatic fitting reducer PG 10-8.

As shown in the picture

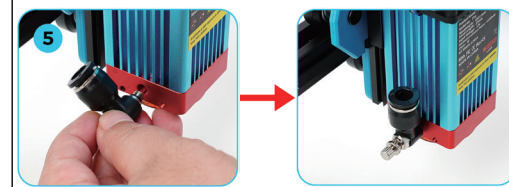
4.1 If the laser module includes air assist, connect the air hose to the air assist of the laser module.

As shown in the picture



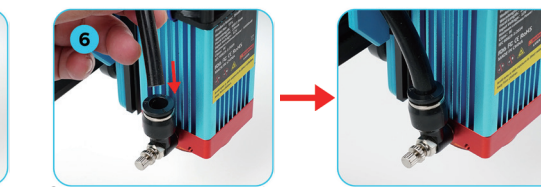
4.2 If the laser module is not equipped with air assist, use M3x8 screws to install the air assist to the laser module.

As shown in the picture



5 Connect the cylinder regulating valve SL8-M5 black nickel-plated to the laser head

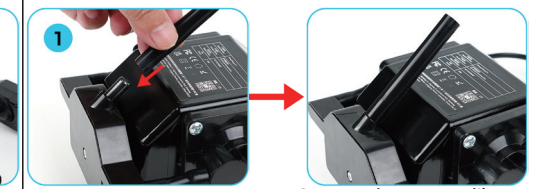
As shown in the picture



6 Connect the silicone tube ID 6 OD 8 L2500mm to the cylinder regulator SL8-M5 black nickel plated.

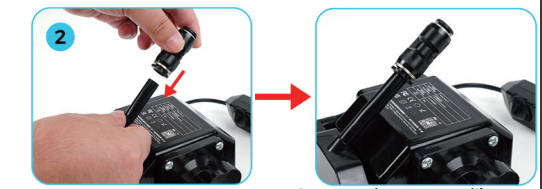
As shown in the picture

Instructions d'installation de la pompe à air



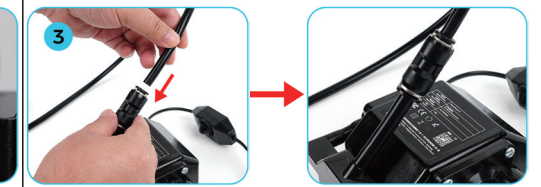
1 Connectez le tube en silicone ID 8 OD 10 L70mm à la pompe à air.

Comme le montre l'image



2 Connecter le réducteur de raccord pneumatique PG 10-8 au tube en silicone

Comme le montre l'image

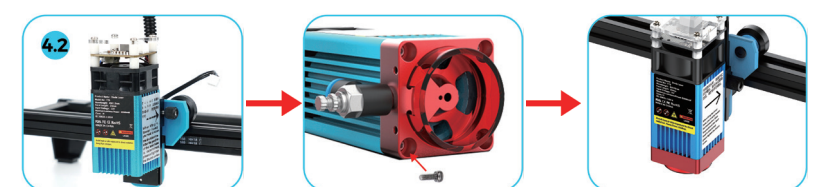


3 Raccorder le tube silicone ID6 OD 8 L2500mm au raccord réducteur pneumatique PG 10-8.

Comme le montre l'image

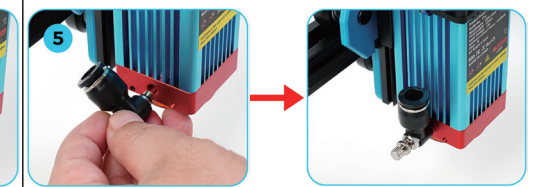
4.1 Si le module laser comprend une assistance pneumatique, connectez le tuyau d'air à l'assistance pneumatique du module laser.

Comme le montre l'image



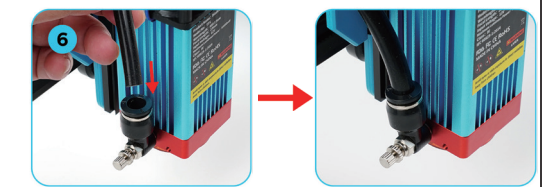
4.2 Si le module laser n'est pas équipé d'une assistance pneumatique, utilisez des vis M3x8 pour installer l'assistance pneumatique sur le module laser.

Comme le montre l'image



5 Connectez la vanne de régulation du cylindre SL8-M5 nickelée noire à la tête laser

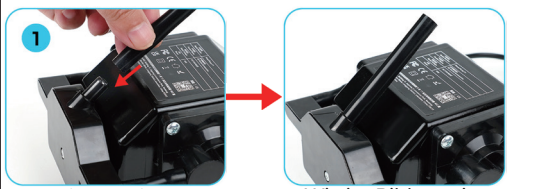
Comme le montre l'image



6 Connectez le tube silicone ID 6 OD 8 L2500mm au détendeur de bouteille SL8-M5 nickelé noir.

Comme le montre l'image

Installationsanleitung für die Luftpumpe



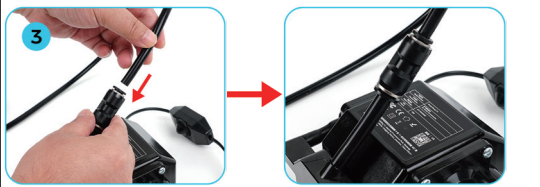
1 Verbinden Sie den Silikonschlauch ID 8 OD 10 L70mm mit der Luftpumpe.

Wie im Bild gezeigt



2 Pneumatikverschraubung Reduzierstück PG 10-8 an Silikonschlauch anschließen

Wie im Bild gezeigt

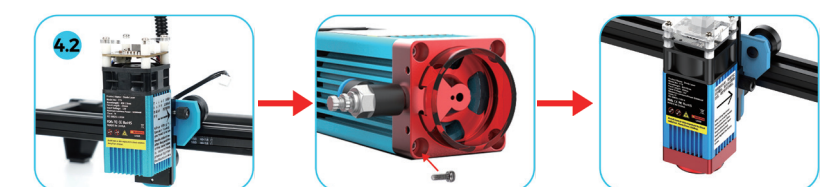


3 Verbinden Sie den Silikonschlauch LD6 OD 8 L2500mm mit dem Pneumatikanschluss-Reduzierstück PG 10-8.

Wie im Bild gezeigt

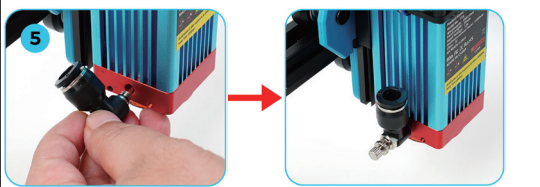
4.1 Wenn das Lasermodul über eine Luftunterstützung verfügt, schließen Sie den Luftschlauch an die Luftunterstützung des Lasermoduls an.

Wie im Bild gezeigt



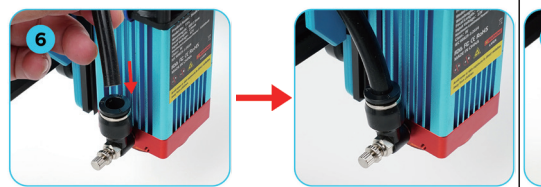
4.2 Wenn das Lasermodul nicht mit Luftunterstützung ausgestattet ist, verwenden Sie M3x8-Schrauben, um die Luftunterstützung am Lasermodul zu installieren.

Wie im Bild gezeigt



5 Schließen Sie das Flaschenregulierventil SL8-M5 schwarz vernickelt an den Laserkopf an

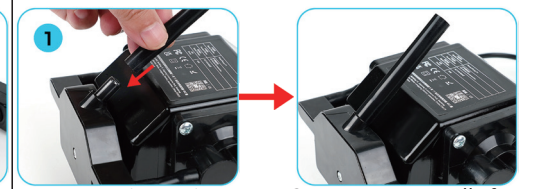
Wie im Bild gezeigt



6 Verbinden Sie den Silikonschlauch LD 6 OD 8 L2500mm mit dem Flaschenregler SL8-M5 schwarz vernickelt.

Wie im Bild gezeigt

Istruzioni per l'installazione della pompa dell'aria



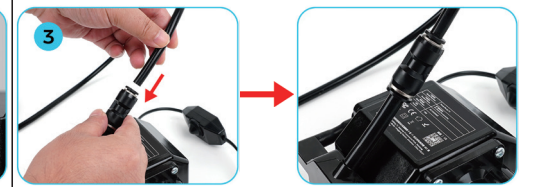
1 Collegare il tubo in silicone ID 8 OD 10 L70mm alla pompa dell'aria.

Come mostrato nella foto



2 Collegare il riduttore del raccordo pneumatico PG 10-8 al tubo in silicone

Come mostrato nella foto

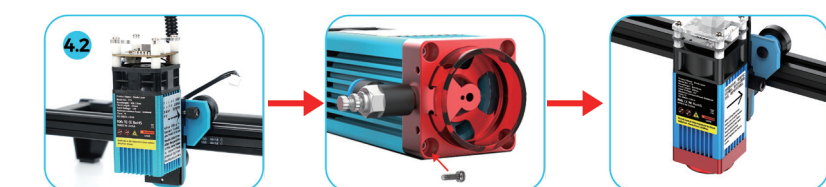


3 Collegare il tubo in silicone ID6 OD 8 L2500mm al raccordo pneumatico riduttore PG 10-8.

Come mostrato nella foto

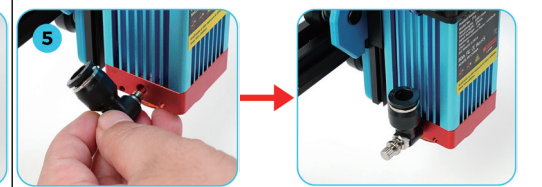
4.1 Se il modulo laser include il supporto pneumatico, collegare il tubo dell'aria al supporto pneumatico del modulo laser.

Come mostrato nella foto



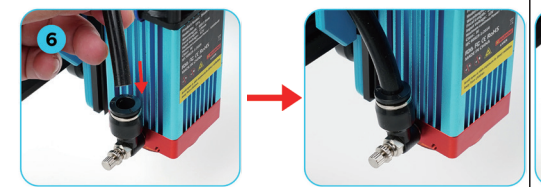
4.2 Se il modulo laser non è dotato di supporto pneumatico, utilizzare viti M3x8 per installare il supporto pneumatico sul modulo laser.

Come mostrato nella foto



5 Collegare la valvola di regolazione del cilindro SL8-M5 nichelata nera alla testa del laser

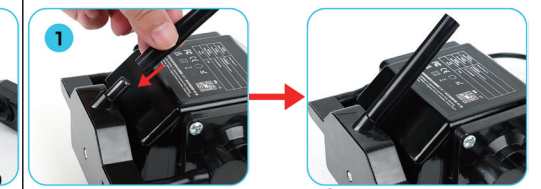
Come mostrato nella foto



6 Collegare il tubo in silicone ID 6 OD 8 L2500mm al regolatore della bombola SL8-M5 nichelato nero.

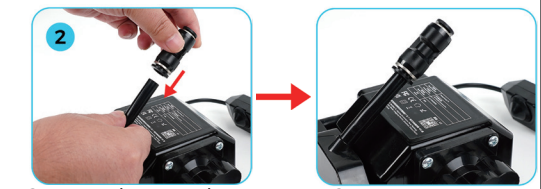
Come mostrato nella foto

Instrucciones de instalación de la bomba de aire.



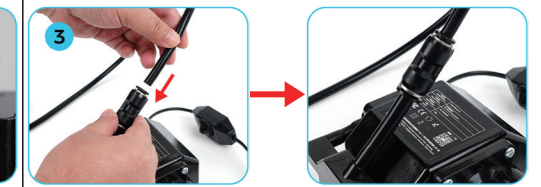
1 Conecte el tubo de silicona ID 8 OD 10 L70mm a la bomba de aire.

Como se muestra en la imagen



2 Conecte el racor reductor neumático PG 10-8 al tubo de silicona

Como se muestra en la imagen

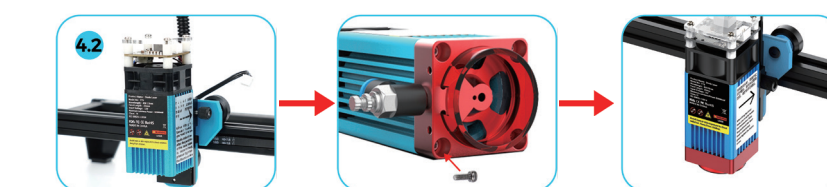


3 Conecte el tubo de silicona ID6 OD 8 L2500mm al reductor de racor neumático PG 10-8.

Como se muestra en la imagen

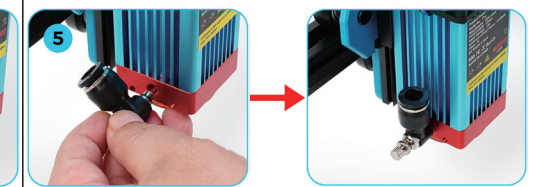
4.1 Si el módulo láser incluye asistencia de aire, conecte la manguera de aire a la asistencia de aire del módulo láser.

Como se muestra en la imagen



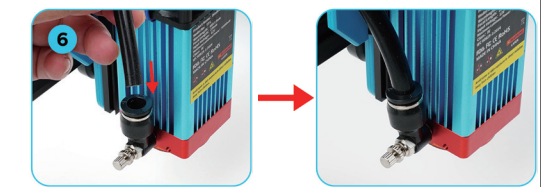
4.2 Si el módulo láser no está equipado con asistencia de aire, use tornillos M3x8 para instalar la asistencia de aire en el módulo láser.

Como se muestra en la imagen



5 Conecte la válvula reguladora del cilindro SL8-M5 niquelada negra al cabezal láser

Como se muestra en la imagen



6 Conecte el tubo de silicona ID 6 OD 8 L2500 mm al regulador del cilindro SL8-M5 niquelado negro.

Como se muestra en la imagen