

**EXTREME EDITION XY-T50H**



**Fittings with 4 beautiful knob cap  
3 small and 1 big two styles according to  
personal preferences**



**IMPORTED WITH ORIGINAL PACKAGINGTPA3116D2**  
HIGH FIDELITY SOUND QUALITY DEEP BASS CLEAR TREBLE



**BLUETOOTH  
5.0**



**AUX  
IMPORT**



**USB FLASH  
DISK PLAY**

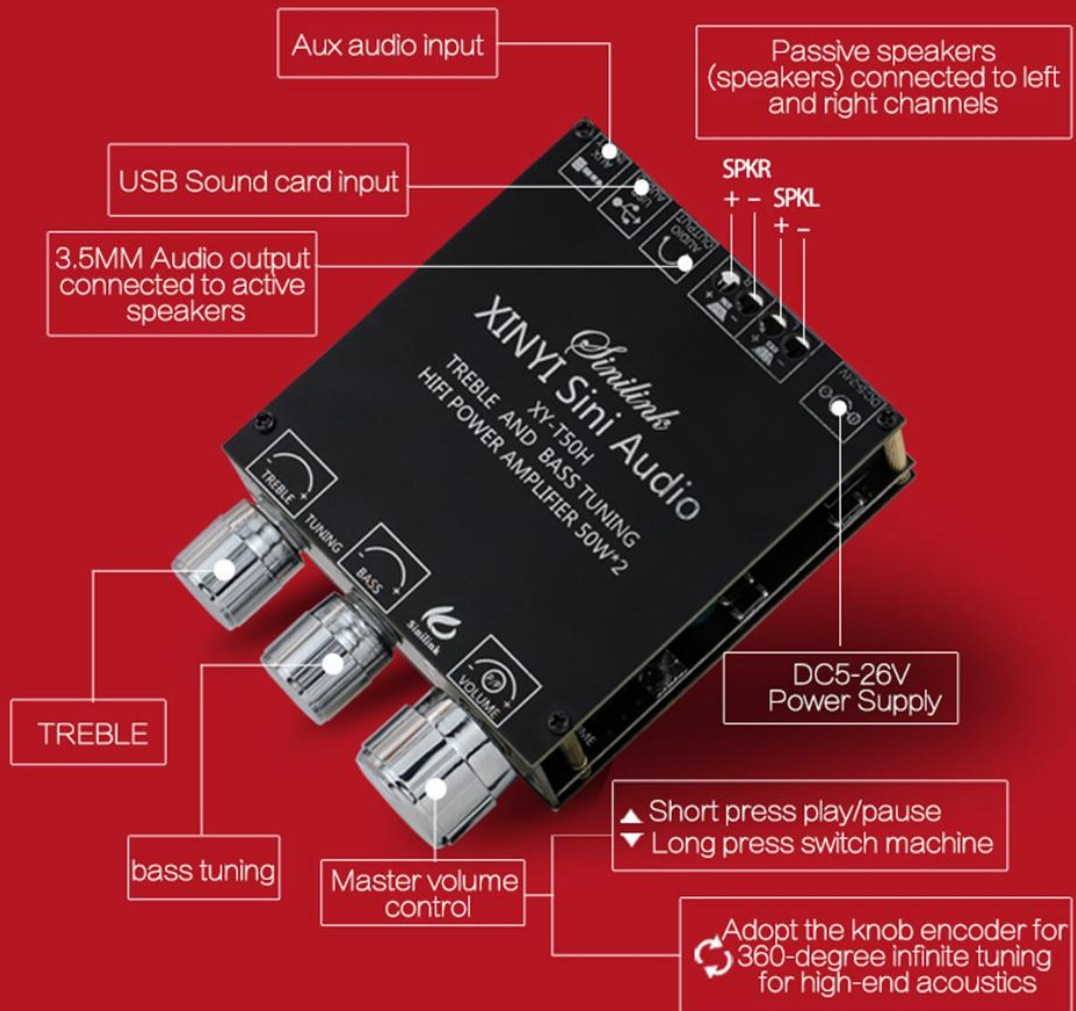


**USB SOUND  
CARD**



**HIFI TONE  
QUALITY**

Delicate appearance Alter and bass are adjusted independently  
Strong performance



USB the file system must be FAT32, up to 32GB

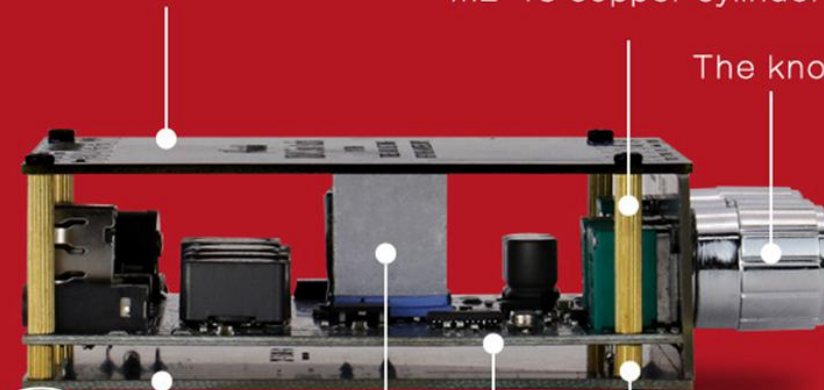


# Shell Installation Diagram

Shield hood power inductance

m2\*18 copper cylinder

The knob hat



m2\*4+3 copper cylinder

Under the cover

circuit board

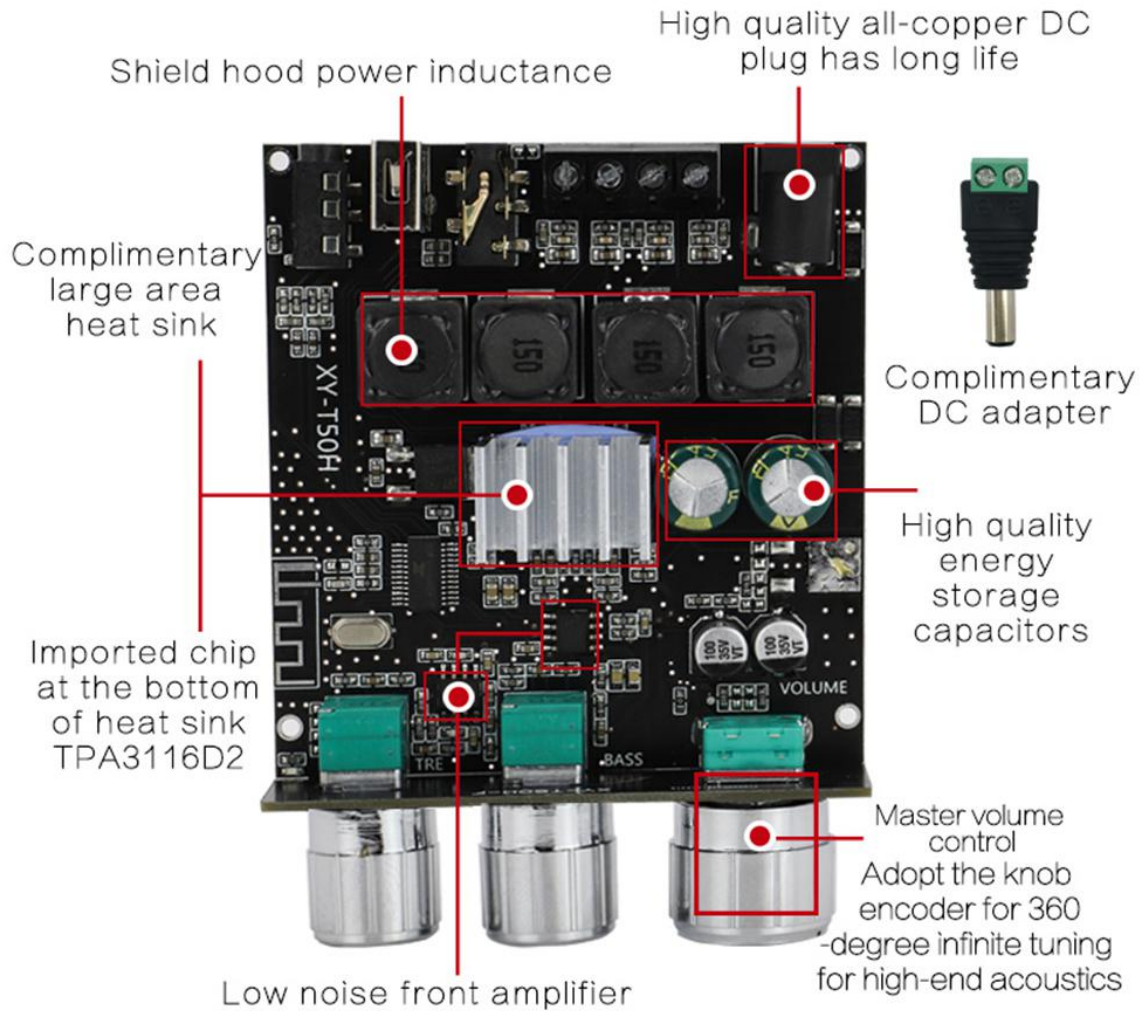
M2\*3 screw



Adopts the special thermal conductivity silica gel to paste the large area heat radiator close to the shell of the copper heat dissipation area doubled to ensure that the product full power and high performance operation



## Display of bare plate construction



The bare board shows the real material!

## Product List Display



Packing weight :130g



Shield hood power inductance bare board

Under the cover



Knob cap 4

m2\*4+3 copper cylinder 4

M2\*3 screw 8



m2\*18 copper cylinder 4



DC adapter



Heat sink



Thermal conductive silicone paste

## Product Size Diagram



## The actual shooting of the product



## Product parameter information sheet

Trademark: XINYI Sini Audio    Model: XY-T50H
Name: 50W+50W High and bass adjustable stereo bluetooth power amplifier board
Power supply: above DC5-26V/5A    Bluetooth version: 5.0
Audio Input: bluetooth+AUX+USB+USB sound card
Audio output: Passive speakers+3.5mminterface stereo out
Volume Control: high-end encoder knob adjustment, smooth hand feel
Frequency domain: 20Hz-30KHz    SNR: 92dB
Fit the horn: 10W-200W /4Ω-8Ω    Output Power: 50W*2
Protection mechanism: electrostatic overvoltage, undervoltage, overheat, DC detection and short circuit protection
Special Features: Support Sinilink-APP
Product Size: 95mm*70mm*25mm    Product weight: 130g



# Notes for product use

## Heat sink installation

When assembling, we must pay attention to the installation of the radiator fin. After sticking the radiator silicone on the radiator fin, we will stick the side of the radiator fin with the silica gel on the power amplifier chip. Pay attention to the heat sink metal shell must not be in contact with the surrounding components, to avoid short circuit; Finally, the roof is pressed against the heat sink, and the heat dissipation through the roof is achieved to achieve better heat dissipation effect.

## Audio input mode toggle

When this product is not mounted on any external audio device, the default power is Bluetooth mode; If the external player device is mounted, such as inserting AUX or U disk, the default mode is AUX or U disk playback; In the process of playback, the principle of backplug device priority should be followed. For example, if an AUX is inserted during Bluetooth playback, it will be switched to AUX playback immediately. If insert U disk, switch to U disk to play immediately; Switching audio mode can also be selected by APP, which is very convenient:

- 1) When AUX is playing, try to choose AUX line with shielding layer to reduce noise.
- 2) Try to use MP3 format for U disk playback, and the sampling rate of WAV format must be within 44100Hz. If the sampling rate is too high, it may not be able to play.
- 3) When using the function of USB sound card, you can connect the computer with the USB data cable without installing any driver. Most computer systems will cut the USB sound card by default. If you cannot switch it automatically, you can choose to switch it manually.

## The power to choose

The power supply range of this product is 5-26VDC, compatible with the standard 5.5-2.1/2.5 power adapter plug, it is recommended to use the standard 12V/24V power adapter, the current output is more than 5A.

- 1) Select the power size and the use of the horn power related, such as the use of 8 ohm 50W horn, the use of 24V power supply, current at least 5A above, the current is too small may appear sound stagnation phenomenon, reduce the volume to reduce the output power can solve this problem
- 2) Power supply voltage can not be higher than 26V, higher than 26V, the circuit board will be burned.
- 3) If the amplifier board is restarted after the volume is turned up during the playback, it is caused by insufficient power supply, and the power supply with greater output current can be replaced.

## Speaker selection

This product power amplifier can continuously output 50W\*2 power, 10W~100W speakers can be pushed, recommended to use 8 ohm or 4 ohm speakers. If the power is within 50W of the speaker, appropriate to reduce the power supply voltage (such as 12V power supply) or turn down the volume of the player; The greater the power supply voltage of the horn is greater than 50W (within 26V).

If the music speaker appears "hiccup" phenomenon, the first consideration of the power supply is insufficient, the use of a larger power supply; The second consideration of power amplifier overheat protection, strengthen heat dissipation or reduce the volume of broadcast

If multiple speakers are used in parallel, the total impedance of the speakers in parallel must be controlled in more than 4 ohm too small impedance, and the power amplifier is easy to enter the over-current protection state.

## The signal problem

PCB antenna is used in this product, and the visual distance of connection can reach 15 meters without shielding. If you can't find bluetooth when using it, or if you can't connect bluetooth, it's a signal problem.

- 1) Always stay away from the router when using.
- 2) Avoid using on metal countertops, which will affect the signal of PCB antenna
- 3) refit the speaker, if it is a metal shell, must put the antenna out of the shell, the metal will shield the signal.

Give away cool features

# Mobile APP control

Support Android Apple system



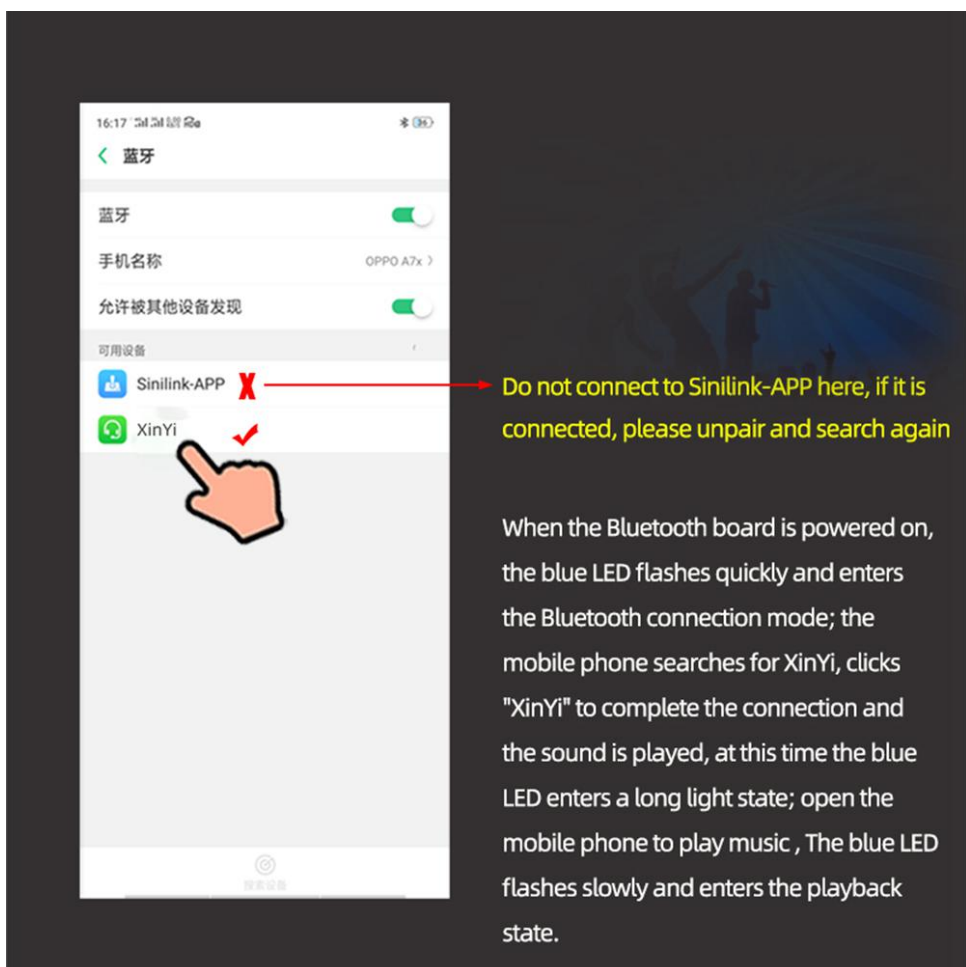
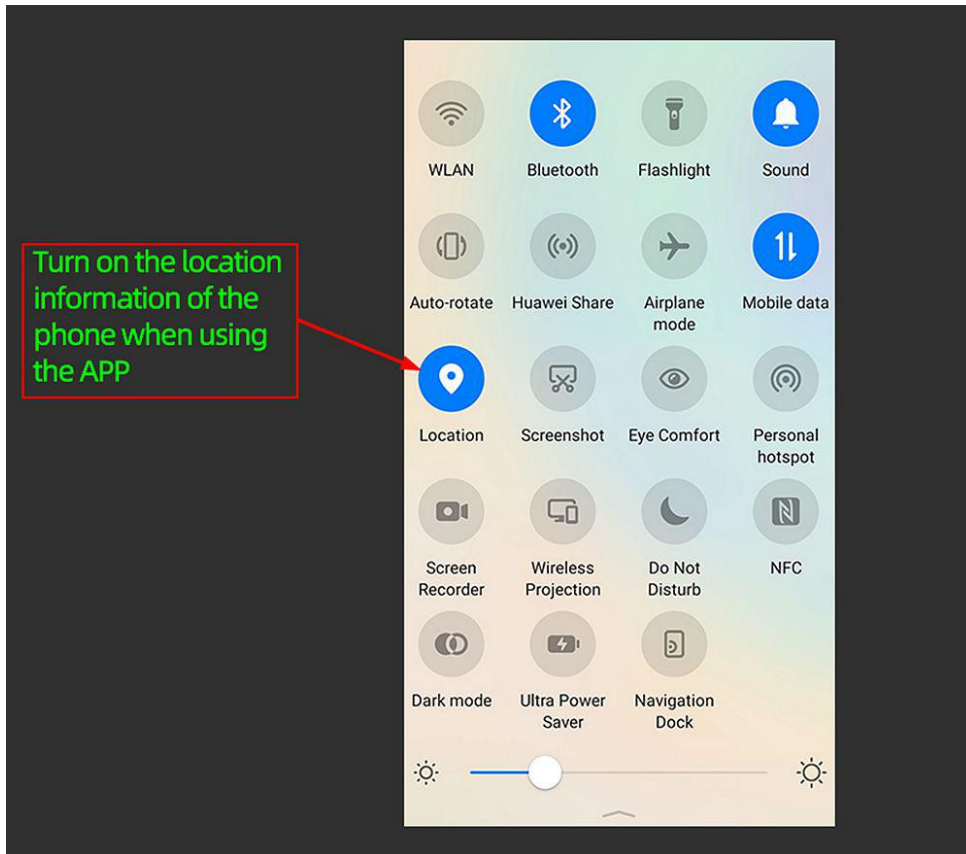
APP control

## APP visual operation play mode

Volume Sound Effect Up and Down Song Control Play Pause Play Mode



More functions will be upgraded in the future, so stay tuned



# Steps to connect Bluetooth via mobile APP

**Note:**When using the APP, you must turn on all the APP permissions in the phone settings, otherwise some phones,compatibility issues will occur, causing Bluetooth to fail to connect.



First step  
Click the little yellow dot



Second step  
Click to connect Bluetooth device



The fourth step  
Connection succeeded



Third step  
Search Bluetooth  
Connect to Sinilink-APP