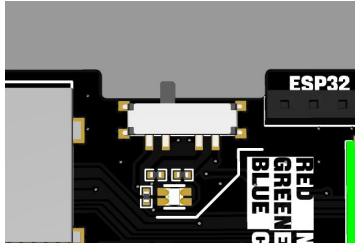
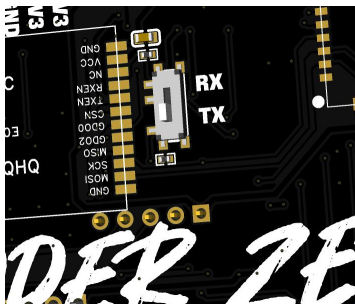


AIO_V1.4 User Manual

Function Switch



There is a function switch button on the top of the PCB, which can be used to switch between the three module functions by toggling the switch. The LED below the switch is used to indicate the current function: the red light indicates that it is currently a 2.4Ghz transceiver module, the green light indicates that it is currently a WIFI module, and the blue light indicates that it is currently a CC1101 module.



The switch on the back of the PCB is used to turn on the built-in gain circuit of the CC1101 module. When the switch is in the RX position, the receiving function of the CC1101 module is gain, and when the switch is in the TX position, the transmitting function of the module is gain. When the switch is in the RX position, the module can also perform the receiving function, but the TX function does not receive the gain amplification.

Do not directly plug or unplug the module when it is powered on, as this may damage the module power supply function.

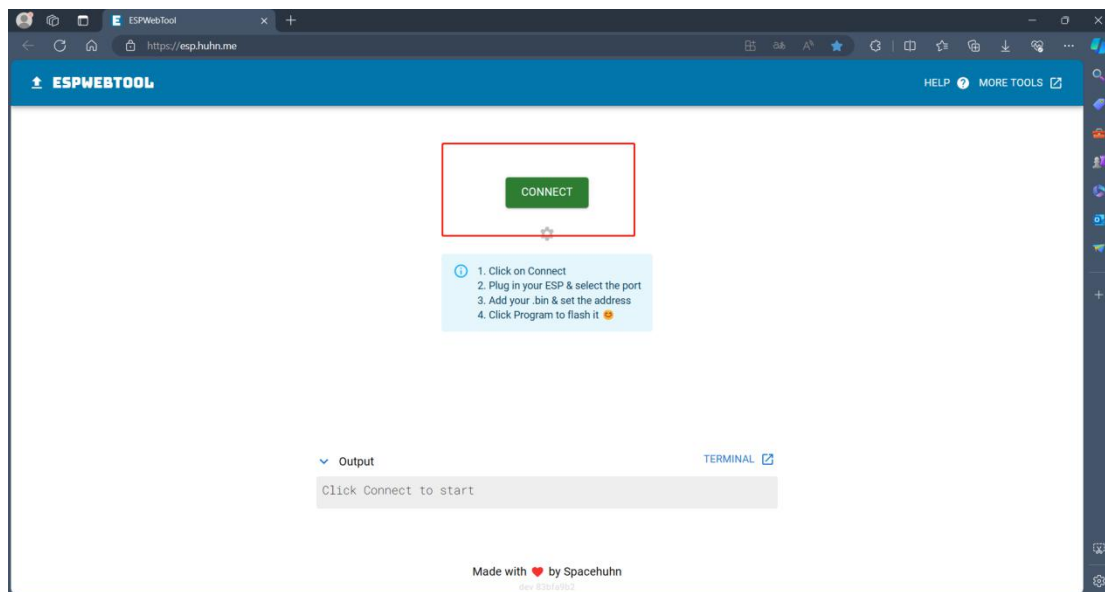
ESP32 program burning

The WIFI module selected on the PCB is ESP32-S2. When downloading the program, you can refer to the burning process of the Flipper zero official WIFI board.

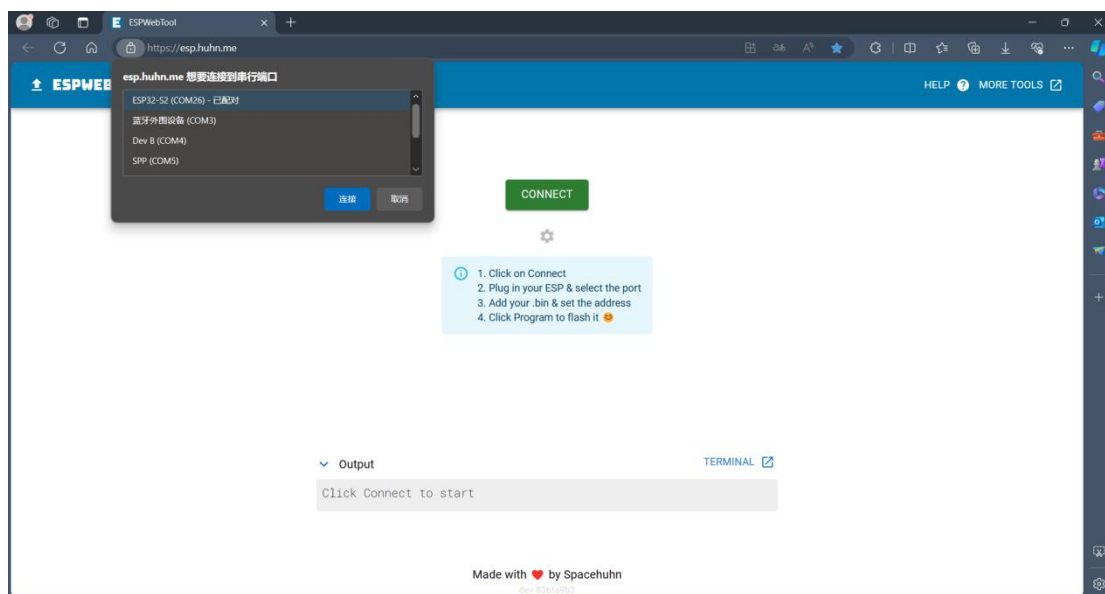
1. Open the following URL through the browser: [ESPWebTool \(huhn.me\)](https://huhn.me) (Use Edge browser)
2. Turn the toggle switch on the top of the front of the PCB board to the middle gear.
3. Press and hold the boot button on the bottom of the front of the PCB (the button is printed

with BT), and connect the TYPE-C interface on the PCB to the computer interface through the USB cable. At this time, the LED color on the front of the PCB should be green.

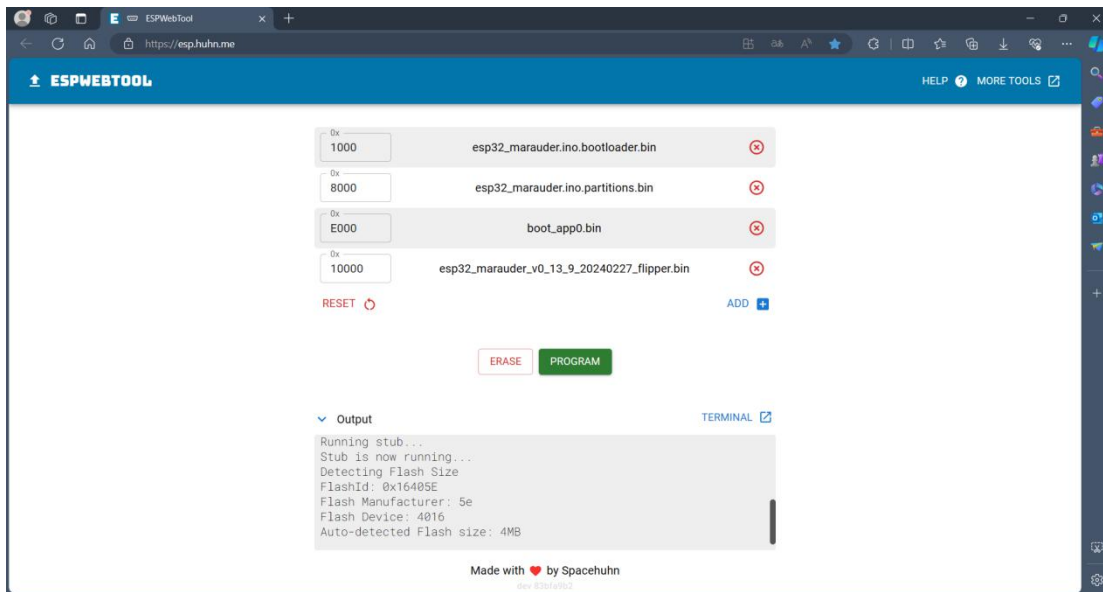
4. Click the CONNECT button on the web page



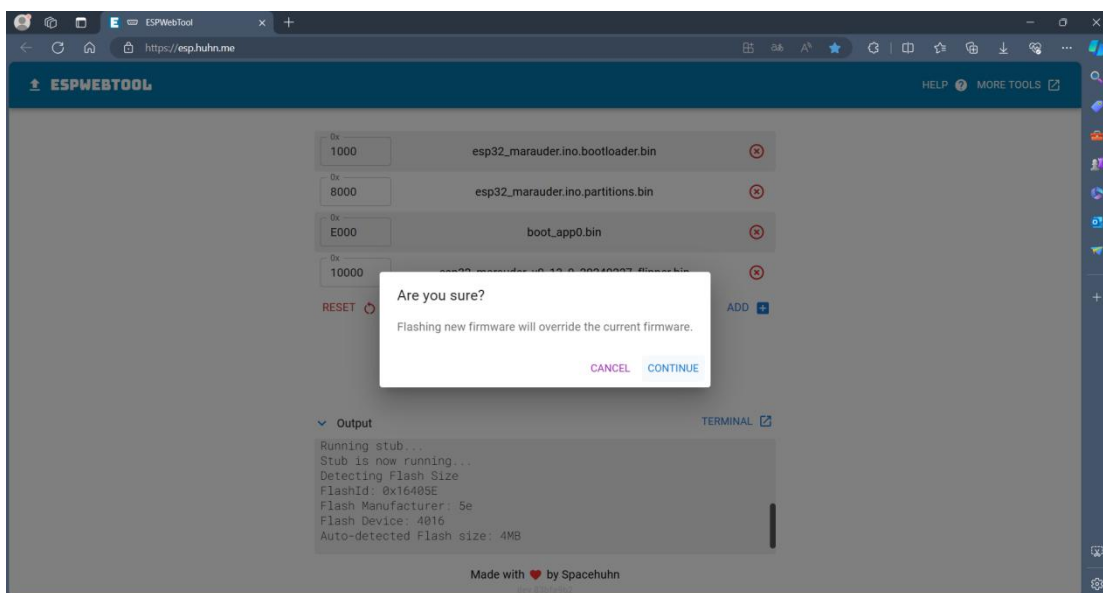
5. Select esp32-s2 chip in the prompt window in the upper left corner



6. Click the picture below to add the downloaded file to the corresponding address



7. Click the PROGRAM button to start downloading. After clicking, a window pops up. Click CONTINUE to continue



8. When the download progress reaches 100%, it prompts that the download is complete. If the download progress is disconnected in the middle and an ERROR message is prompted, check whether the module welding and the USB interface are connected to the computer firmly. After the inspection is completed, reconnect to the computer for burning

0x 1000	esp32_marauder.ino.bootloader.bin	
0x 8000	esp32_marauder.ino.partitions.bin	
0x E000	boot_app0.bin	
0x 10000	esp32_marauder_v0_13_9_20240227_flipper.bin	

RESET  ADD 

ERASE PROGRAM

错误提示

Output [TERMINAL](#) 

```
Image header, Magic=0xE9, FlashMode=0x02, FlashSizeFreq=0x2F
Writing data with filesize: 966832
Erase size 966832, blocks 60, block size 0x4000, offset 0x10000,
ERROR!
TypeError: Cannot read properties of null (reading 'getWriter')
Done!
To run the new firmware please reset your device.
```