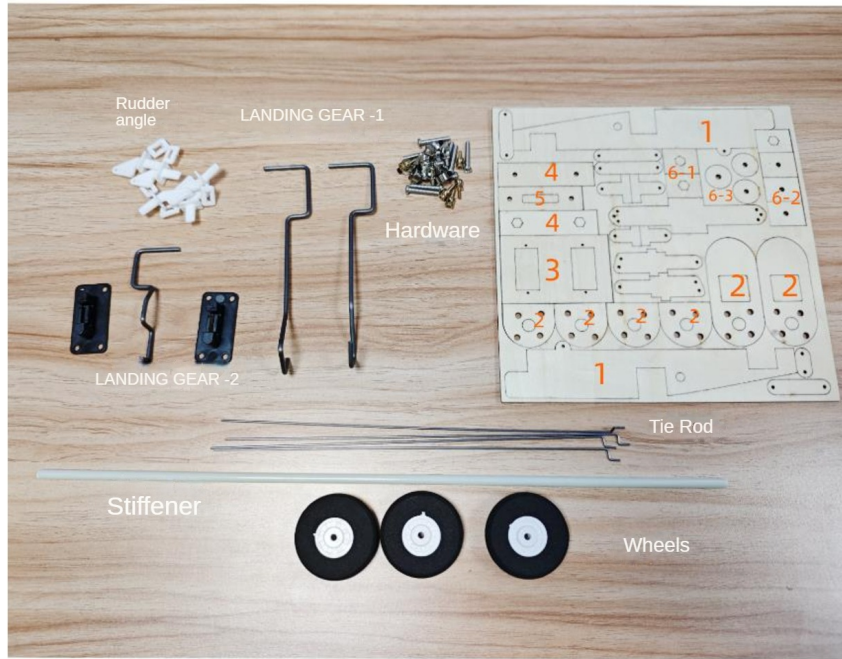


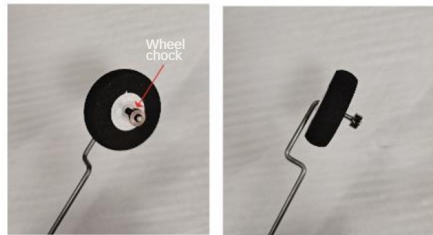
Rambler

Easy Assembly Tutorial



The above is the contents of the empty spare parts package.

1 Long

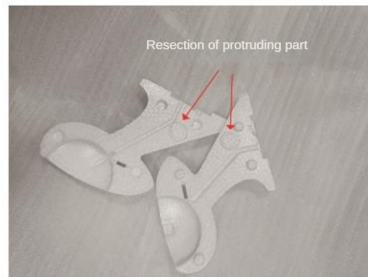


Take

Landing gear -1, wheel, wheel check

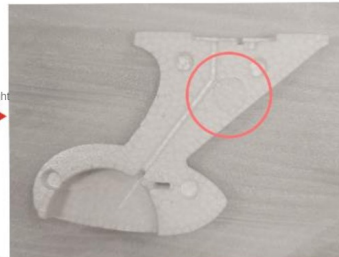
Combine into left pattern

(Pay attention to tightening the screw of the wheel check)



Take the foam parts of the machine feet

As shown on the right

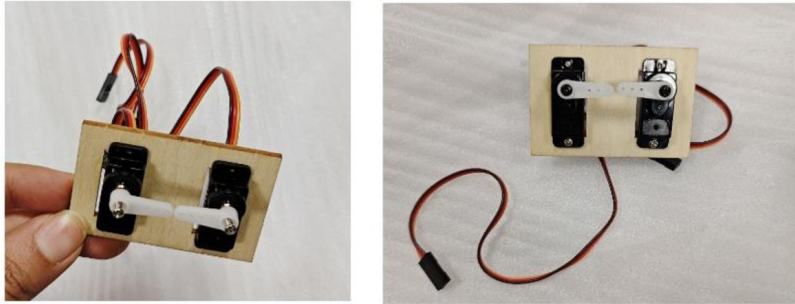


Apply foam glue properly

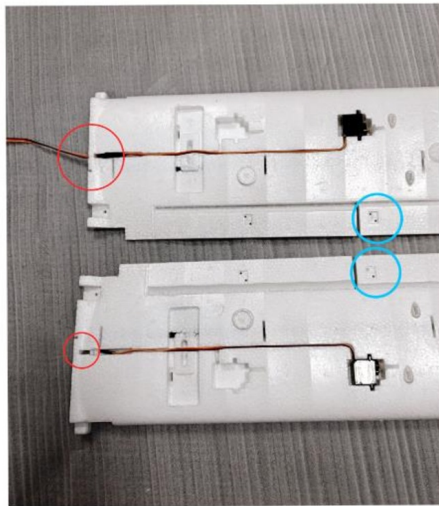


Both feet can be assembled as above.

Hint: All steering gears need to be connected to the receiver before installation.



Take wood chip -3 and two steering gears and assemble them as shown above.



The steering gear at the wing is installed as shown in the left figure.

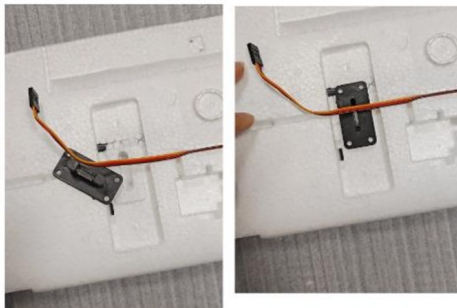
Two steering gears

Respectively connect the steering gear extension line

And through the hole circled in red

Circle the part in Blue

Installing rudder angle



The black fittings in the landing gear -2. As shown in the figure on the left, install it on the corresponding position of the wing with foam adhesive.



Fix the servo line in the groove of the foot

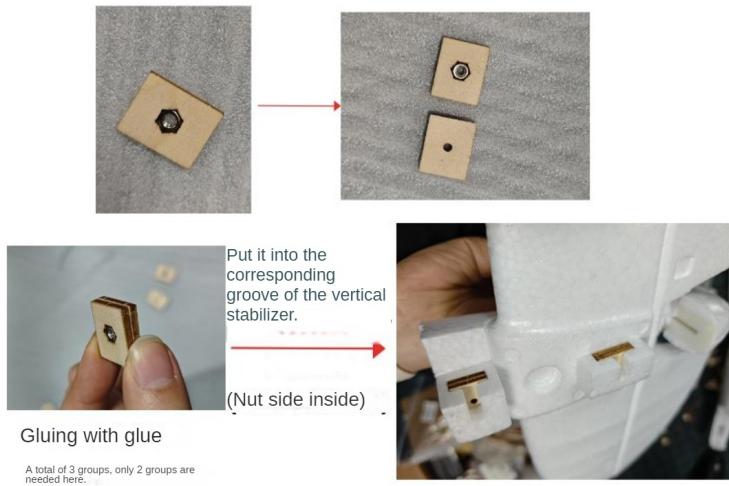


Fix the steering gear, steering gear line and landing gear with foam

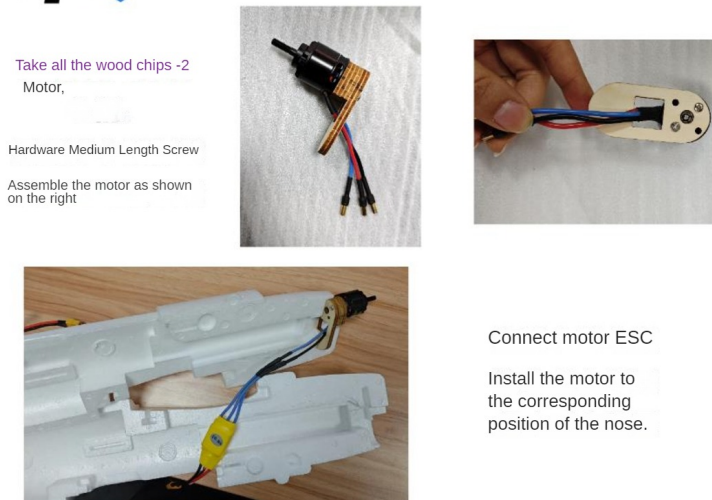
3

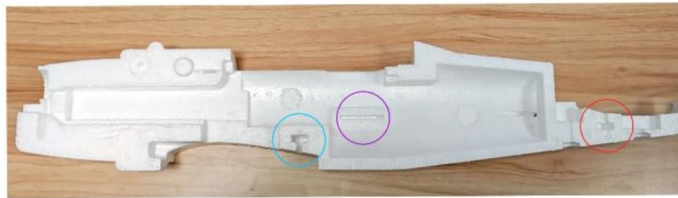


Take 6-1, 6-2 and the hex nut in the hardware, as shown below



4

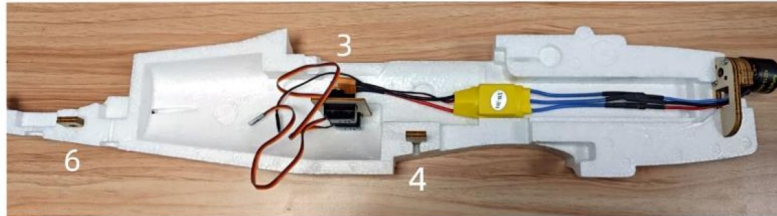




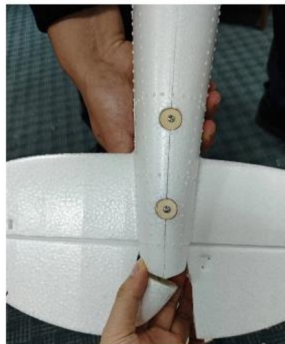
Red circle: combination of wood chips 6-1 and 6-2 before putting eight

Purple circle: put in the combination of wood chip -3 and steering gear before

Blue circle: put in the combination of wood chip -4 and hex nut (similar to wood chip -6)



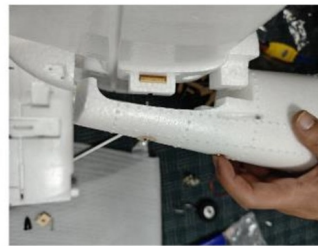
Use foam glue to bond the fuselage on both sides.



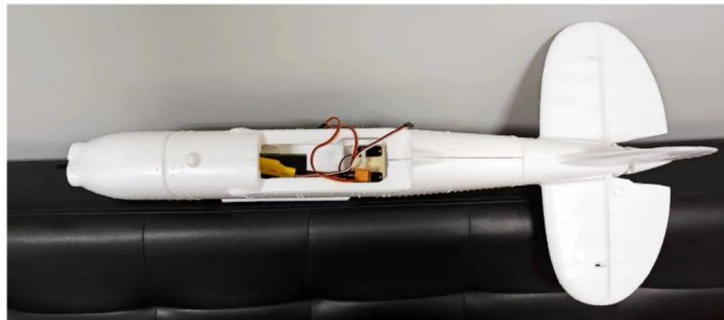
Take wood chip 6-3 and long screw

As shown in the picture on the right, the tail is fixed.

Apply a proper amount of foam at the same time.

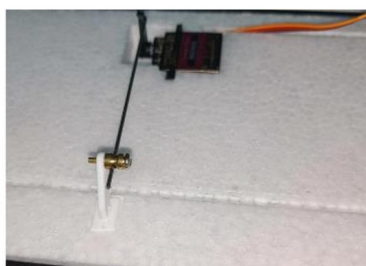


Mount the Hood

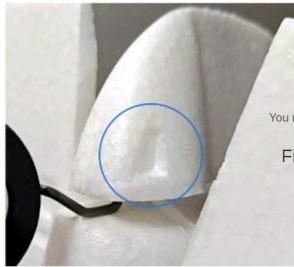


5 ←

Install the horizontal stabilizer and aileron rudder angle, quick adjustment and pull rod.



See the figure above for aileron installation.



Rudder angle at vertical tail

You need to make a small cut at the blue circle.

Fix rudder angle with foam

As shown on the right



The left steering gear of the fuselage controls the horizontal tail, and the right steering gear controls the vertical tail.

Installation of horizontal stabilizer and vertical stabilizer Rod.

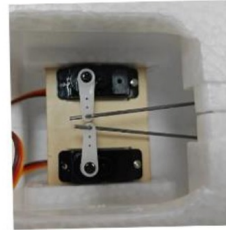
Go through the holes marked by the blue circle to connect the horizontal and vertical tail rudder angles to the steering gear in the fuselage.



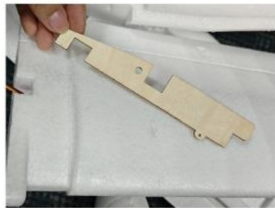
Suggested here

Remove the steering gear arm and connect the pull rod.

And then fixed with screws



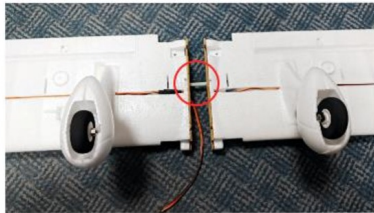
6



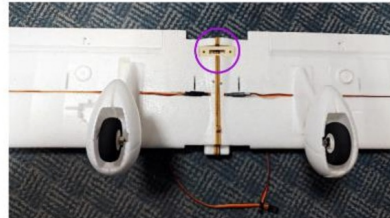
Take wood chips -1

Paste on both wings respectively

Suitable location

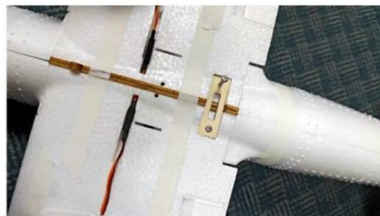


Connect both wings with stiffeners



Fix wood chip -5 in purple circle position

Wing assembly complete



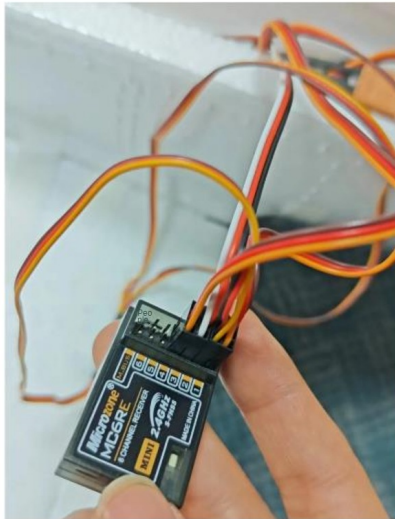
With long screws in the hardware

Fixed fuselage and wings

(At this time, the foam is not dry. Can be reinforced with masking paper)



Fuselage assembly complete



Connect battery, electric control, receiver and each servo line

Electric Tuning-Throttle-Channel 3
White on the inside

Two aileron servo lines
Connect the -1 channel with the Y line

Flat Tail Servo Line-Lift -2 Channel
Vertical Stabilizer Line-Direction -4 Channel

After the commissioning is completed, fix the receiver, electric speed control and battery in the appropriate position in the engine room.

(Stick the magnets in the hardware in place to secure the engine compartment cover)



Install the paddle

Installation completed