

LAOTIE

ES19 Manual

Contents

Product Introduction.....	3
Main Part Introduction.....	4
Folding Instructions.....	5
Charge Your Scooter.....	6
Safety Instructions.....	6
Display Manual.....	8
Specification.....	14
Maintenance.....	16

Product Introduction



Main Part Introduction

- ① Front light button
- ② Turn signal button
- ③ Horn button
- ④ Volt lock with key
- ⑤ Smart display (with USB port)
- ⑥ Power button
- ⑦ Mode button
- ⑧ Accelerator
- ⑨ Speed limit button
- ⑩ Single / Dual engine button

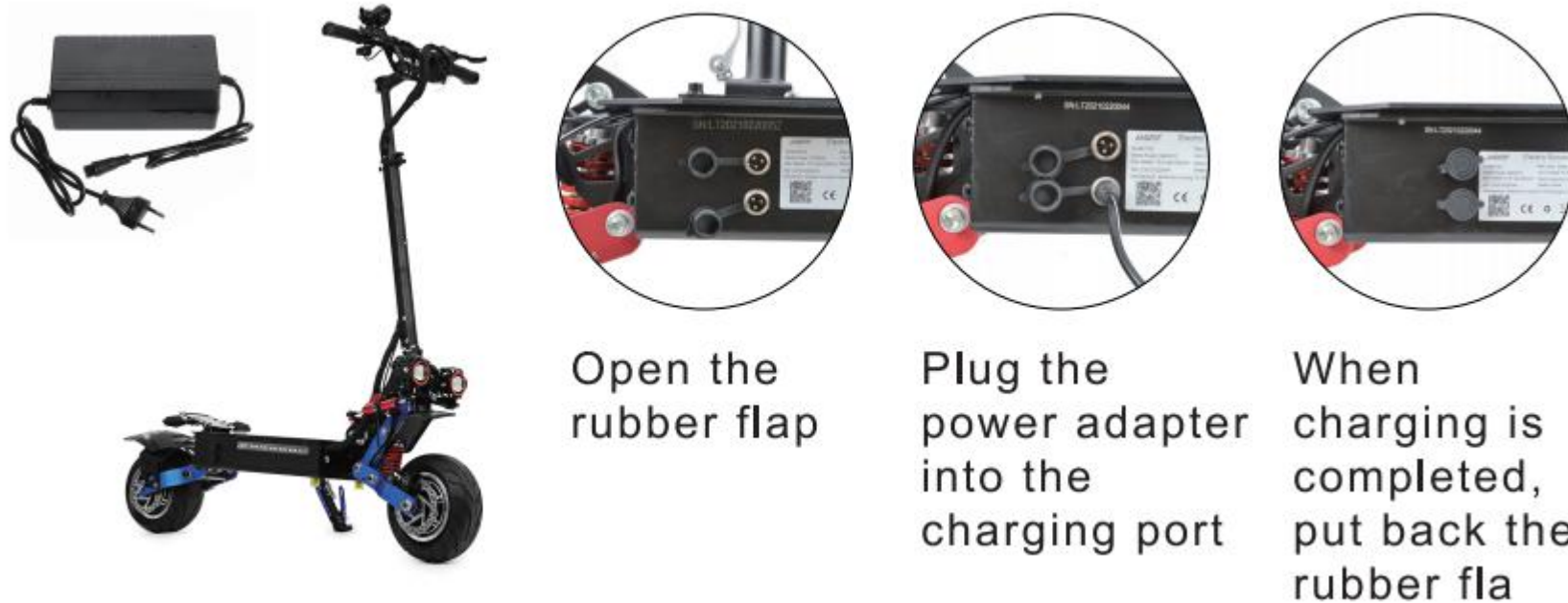


Folding Instructions

- 1 Press the button on the rod to lower position
- 2 Rotate the outer ring of the handle
- 3 Fold the handle
- 4 Pull out the red rod
- 5 Press sliver rod to lower the scooter
- 6 Done



Charge Your Scooter



Safety Instructions

This manual has been created to help you understand the safe use and maintenance of LAOTIE ES19 electric scooter.

- Persons without excellent vision, balance, coordination, reflex, muscle and bone strength and good decision-making capabilities should not use this product.
- The user of this product assumes ALL risks associated with its use. To minimize these RISKS, the user must wear safety helmet, goggles, gloves, elbow and kneepads and appropriate footwear.

- This manual contains important safety information. It is your responsibility to review this information and make sure that all riders understand all warnings, cautions, instructions and safety. We're not liable for incidental damages or consequential damages due directly or indirectly to the use of this product.
- Riding the electric scooter can be a hazardous activity. Certain conditions may cause the equipment to fail without fault of the manufacturer. Like other electric products, the scooter can and is intended to move and it is therefore possible to lose control, fall off and/or get into dangerous situations that no amount of care, instruction or expertise can eliminate. If such things occur you can be seriously injured or die, even when using safety equipment and other precautions. RIDE AT YOUR OWN RISK AND USE COMMON SENSE.

Always follow the local laws and regulations.

- Understand your local laws permitting the use of Electric scooters
- Never ride your scooter in conditions of poor visibility.
- Do not do stunts, wheelies or jumps. They will increase your chances of injury and damage your LAOTIE ES19.
- Never carry passengers

Display Manual




is for POWER ON/OFF,



is for settings.

Power On/Off

Long press  for 3 seconds to POWER ON/OFF.

Auto POWER OFF time is 5min without any operation.

Display Settings

When power on, short press "POWER" button to switch TRIP/ODO/VOL on the LCD display.

Short press "MODE" button to switch speed mode, GEAR1,2,3.

Note, TRIP is the single mileage, ODO is cumulative mileage, VOL is battery available voltage.

Debug Operation

Long press both "POWER" and "MODE" button for 3S to activate/exit debug interface settings.

P00-P09 switch: Short press "MODE" button to select P Code.

Value settings: Long press "MODE" button to activate the value of corresponding P code, short press "POWER" to decrease, short press "MODE" to increase the value of each P code.

P Code	Description	Default	Comments
D0	Back lightness	0	DO NOT change.
P02	Mile/KM selection	1	0-KM, 1-Mile
P03	Rated voltage	60	DO NOT change.
P04	Auto turn-off	1	0 - NO auto turn-off; 1 - 60, auto turn-off time,min.
P05	Power-assisted drive gear setting	3	One to three gears available
P06	wheel diameter	10	DO NOT change
P07	Magnet quantity for	30	Do NOT change without written



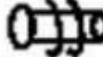

	speed detection		Do NOT change
P08	Speed limit	100	5-100,100 means 100% max speed limit
P09	Start selection	0	0-zero start, 1-none-zero start
P10	Drive mode setting	2	Do NOT change
P11	Assist sensitivity setting	2	Do NOT change

P12	Starting torque	5	Do NOT change
P13	Power assist gear level	5	Do NOT change
P14	Controller current	12	Do NOT change
P15	Speed Limit	100	Do NOT change
P16	Cruise mode	0	Do NOT change
P99	Default function	99	Do NOT change



P value settings comments:

- P code varies sometimes because of **LAOTIE** products continuous optimization and upgrading.
- Please consult **LAOTIE** service team for debug if you have any query.
- Please keep all the P code value in default when riding.

- Please get written approval from **LAOTIE** service team before any change of P value, under condition that you are an experienced **LAOTIE** e-scooter rider.
- Please stop riding the e-scooter and consult **LAOTIE** service team immediately if you find any error code or error signal like: Brake error , motor error  , throttle error  , controller error  etc in the display.

➤ Common Error Codes shown as bellow:

Error code	Meaning	Trouble shoot
ERR 1	Motor Error	Change Motor
ERR 2	Throttle Error	Change Display
ERR 3	Controller Error	Change Controller
ERR 4	Brake Error	Change Brake
ERR 5	Under Voltage	Charging
ERR 6	Communication Error	Change Controller
ERR 7	Communication Error	Change Display

Specification

Items	Specifications
Brand	LAOTIE
Model	ES19
Motor	Dual 3000W (Peak power) Motors
Battery	60V Lithium Battery
Tire	10x4.5inch Ultra-wide Tires
Controller	45A Controller * 2

Brake	Front and Rear Oil Brake & EABS
Steering Damper	6061 Aluminum Alloy Steering Damper
Max Speed	85km/h
Max Range	Dual Motor 60-70 km, Single Motor 135 km
Climbing Angle	50°
Max Load	200KG

Body Size	130x126x28cm
Folding Size	127x51x28cm
Package Size	137x36x57cm

Maintenance

Cleaning and storage

If you see stains on the scooter's body, wipe them off with a damp cloth. If the stains won't scrub off, put on some toothpaste, and brush them with a toothbrush, then wipe them off with a damp cloth. If you see scratches on plastic parts, use sandpaper or other abrasive materials to polish them. Notes: do not clean the scooter with alcohol, gasoline, kerosene or other corrosive and volatile chemical solvents to prevent dire damage. Do not wash the scooter with a high-pressure water spray. During cleaning, make sure that the scooter's turned off, the charging cable is unplugged, and the rubber flap is closed as water leakage may result in electric shock or other major problems. When the scooter's not in use, keep it indoors where it is dry and cool. Do not put it outdoors for long time. Excessive sunlight, overheating and overcooling accelerate tire aging and compromise the scooter and the battery pack's lifespan.

Battery maintenance

1. Use original battery packs, use of other models or brands may bring about safety issues;
2. Do not touch the contacts. Do not dismantle or puncture the casing. Keep the contacts away from metal objects to prevent short circuit which may result in battery damage or even injuries and deaths;
3. Use original power adapter to avoid potential damage or fire;
4. Mishandling of used batteries may do tremendous harm to the environment. To protect natural environment, please follow local regulations to properly dispose used batteries.

5. After every use, fully charge the battery to prolong its lifespan.

Do not place the battery in an environment where the ambient temperature is higher than 50°C or lower than -20°C (e.g., do not leave the scooter or the battery pack in a car under direct sunlight for an extended time). Do not throw the battery pack into fire as it may lead to battery failure, battery overheating, and even another fire. If the scooter is expected to be left idle for more than 30 days, please fully charge the battery and place it in a dry and cool place. Keep in mind to recharge it every 60 days to protect the battery from potential damage which is beyond limited warranty.

Always charge before exhausting the battery to prolong the battery's lifespan. The battery pack performs better at normal temperature, and poor when it is below 0°C. For instance, when it is below -20°C, the riding range is only half or less at normal state. When the temperature rises, the riding range restores.

Note: fully charged ES19 Electric Scooter will last for 120-180 days. The built-in intelligent chip will keep a log of its charging and discharging records. The damage caused by prolonged no charge is irreversible and is beyond limited warranty. Once the damage is done, the battery can not be recharged (non-professionals are forbidden to dismantle the battery pack, as it may cause electric shock, short circuit or even major safety accidents).