

WITH3 Wireless gas boiler thermostat User guide



welcome

Thank you for your trust and support. We have incorporated advanced technology and impeccable craftsmanship to ensure that your new temperature controller will provide you with the perfect temperature environment every day, making your life more comfortable and your living space more stylish and beautiful. For detailed instructions on installation and use of this temperature controller, please carefully read this manual. Please consult a professional to install the temperature controller for you, and ensure that the installation and use of this product comply with the applicable laws.

Application

The intelligent digital thermostat is suitable for room temperature control and household temperature control underfloor heating systems. It controls the operation status of the underfloor heating equipment by sensing the ambient temperature and comparing it with the set temperature. It aims to improve comfort while achieving energy efficiency. The digital thermostat adopts microcomputer control technology with a full-screen display and touch buttons. It is elegantly designed, user-friendly, and easy to operate. The thermostat features manual and automatic functions, one-key energy-saving mode, programmable functions, and status memory function. It can be switched between Celsius and Fahrenheit and includes weather reports. The wireless transmission distance can reach 300 meters with ultra-low power consumption and supports USB charging.

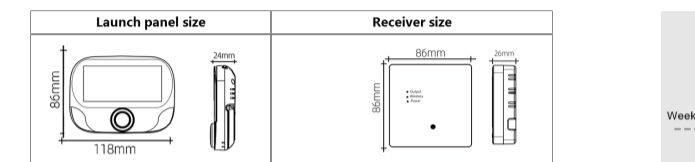
Standard accessories



Appliance specifications.

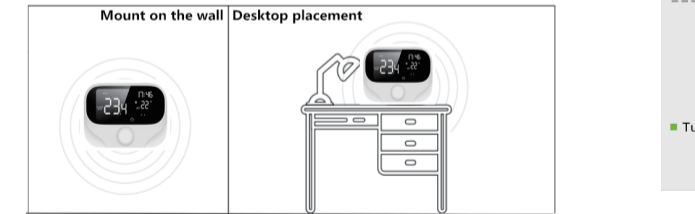
| | | |
|------------------------------------|-------------------------------|---------------------------------|
| Launch panel specifications | Product dimensions: | 118*24*86 |
| | Power supply mode: | 3 alkaline batteries /usb cable |
| | Setting range: | 5°C-60°C |
| | Operating environment: | 5°C-50°C |
| | Temperature control accuracy: | 0.1°C |
| | Liquid crystal display: | LCD VA color screen |
| | Shell material: | Flame retardant PC/ABS V0 grade |
| | Protection level: | IP20 |
| | Self-consumption power: | 1W |
| | Transmission distance: | ≤300M |
| Receiver specifications | Wireless frequency: | 433MHZ |
| | Product size: | 86*86*26 (MM) |
| | Power supply mode: | AC : 90V-240V 50-60HZ |
| | Working environment: | 5°C-50°C |
| | Shell material: | Flame retardant PC/ABS V0 grade |
| | Protection level: | IP20 |
| | Self-consumption power: | 1W |
| | Load current: | 3A |
| | Transmission distance: | ≤300M |
| | Wireless frequency: | 433MHZ |

Appearance size



Installation position of the thermostat

The distance between the thermostat and the receiver is not more than 100 meters

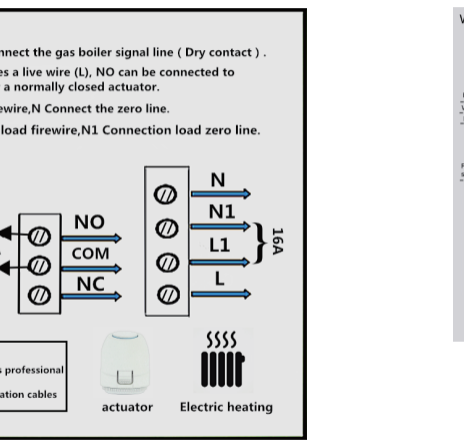


Display icon description



Turn the twist to adjust the parameters.

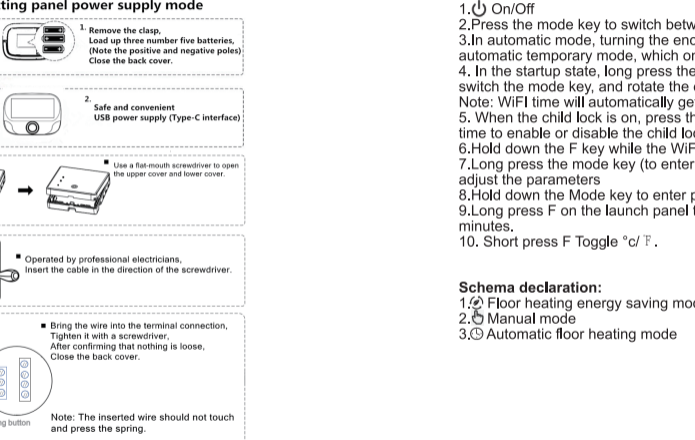
Wiring diagram



Radio frequency connection process



Receiving panel installation mode



Operation instruction

- On/Off
- Press the mode key to switch between manual and automatic modes.
- In automatic mode, turning the encoder to adjust the temperature will enter automatic temporary mode, which only runs for a period of time.
- In the startup state, long press the switch button to adjust the time and date, switch the mode key, and rotate the encoder to adjust parameters.
- Note: WiFi time will automatically get Internet time.
- When the child lock is on, press the Shutdown and Mode keys for the same time to enable or disable the child lock.
- Hold down the F key while the WiFi is on.
- Long press the mode key (to enter Advanced options) to rotate the encoder to adjust the parameters
- Hold down the Mode key to enter programming mode
- Long press F on the launch panel to enter the WiFi distribution state for 3 minutes.
- Short press F Toggle °c/ °F .

Schema declaration:

- Floor heating energy saving mode
- Manual mode
- Automatic floor heating mode

Time slot programming specification

Hold down the Mode key to enter programming mode, Press the mode key to switch. Turn the encoder to adjust the time and temperature programming Settings for each option parameter, press **U** button Exit Save.

| Time frame | Period icon | Time period | | temperature | |
|-------------|-------------|--------------|------------------------------------|--------------|------------------------------------|
| | | Default time | adjust | Default time | adjust |
| Working day | 1 | 06:00 | Turn the button to change the time | 20°C (68°F) | Turn the button to change the time |
| | 2 | 08:00 | | 15°C (59°F) | |
| | 3 | 11:30 | | 15°C (59°F) | |
| | 4 | 12:30 | | 22°C (72°F) | |
| | 5 | 17:00 | | 15°C (59°F) | |
| Day off | 1 | 08:00 | 20°C (68°F) | | |
| | 2 | 22:00 | 15°C (59°F) | | |

Advanced options Settings

In the off state, Long press the mode key to access Advanced options, Then press the mode key below the button to enter the next item, Rotary encoder adjustment parameters, press **U** button Exit Advanced options.

| Serial num | Advanced option name | Default value | Option range |
|------------|---------------------------------|---------------|--------------------|
| 1 | Temperature calibration | -2°C | -9~9°C |
| 2 | NTC selection | IN | 0:IN 1:OU 2:AL |
| 3 | High temperature protection | 60°C | 5~60°C |
| 4 | Temperature difference starting | 0.5°C | 0.5~5°C |
| 5 | Low temperature protection | On | 0:ON 1:OFF |
| 6 | Weekly programming | 1 | 01:5+2,02:6+1,03:7 |
| 7 | Maximum set temperature | 40°C | 30~90°C |
| 8 | Minimum set temperature | 10°C | 5~20°C |
| 9 | Factory recovery | - | - |
| 10 | Backlight standby brightness | 0 | 0-100 |
| 11 | ***** | ***** | ***** |
| 12 | ***** | ***** | ***** |
| 13 | Energy saving mode Temperature | 18 | 5~45°C |

About wireless network WIFI connection

Before using the WiFi thermostat for the first time, you have to set up the WiFi signal and configuration through your smartphone or tablet, which will allow your connected devices to communicate with each other. WiFi link: Bluetooth thermostat, please turn on the phone Bluetooth, open the location.

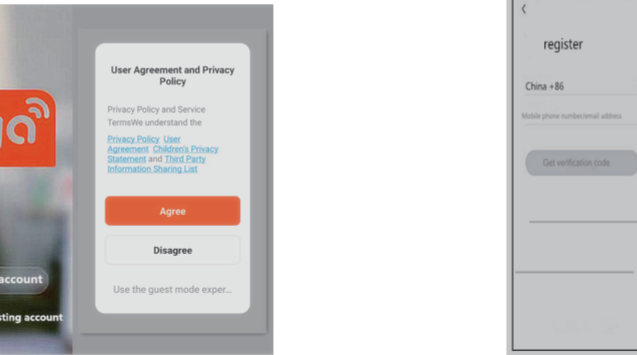
1.APP download

Search "Tuya Smart" and "Smart Life" in each app market or scan the following QR code to download.

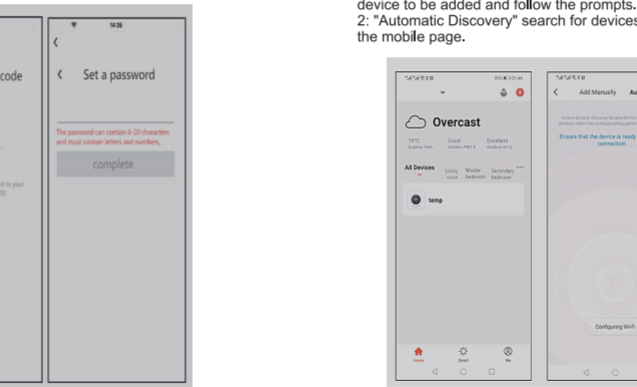


2.Register an account

If you do not have an APP account, you can choose to register or log in via SMS verification code. Click "Create a new account", will enter the Doodle Smart platform privacy policy page, click agree, officially enter the mobile number registration page.

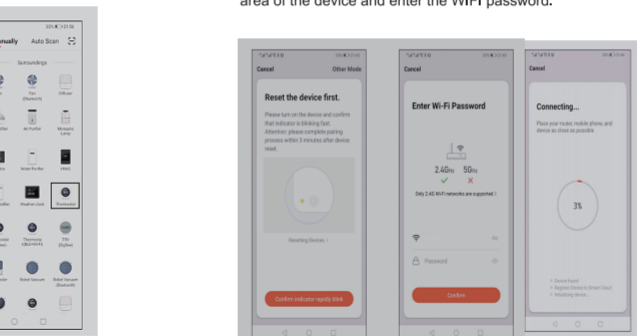


The system automatically determines the current country/region. You can also manually select the country/region, enter your mobile phone number or email address, and click "Obtain Verification Code". Enter the received verification code, then enter the password, click "Finish", you can register successfully.

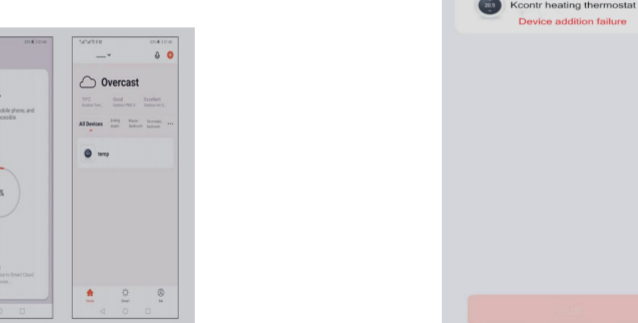


3.Add devices

1:(Bluetooth link) Turn on the Bluetooth of the mobile phone, keep the device on, enter the mobile Doodle APP, click "Add device" on the home page of the APP or "+" in the upper right corner, enter the "Add device" interface will prompt: Find the device to be added and follow the prompts.
2: "Automatic Discovery" search for devices, and add devices as prompted on the mobile page.

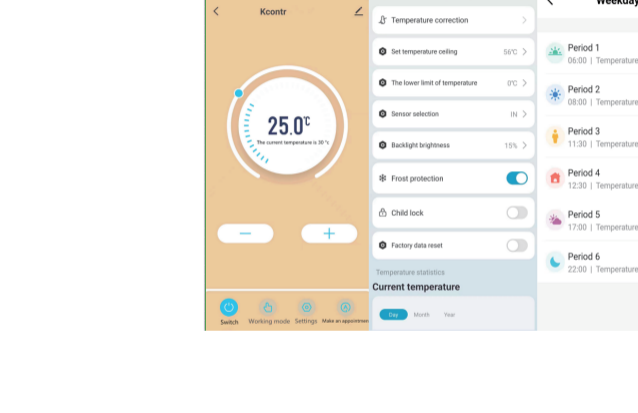


(WiFi link) Thermostat When the phone is turned on, the phone will turn on Bluetooth, and the phone will turn on the Doodle APP. If you click Add device, you will automatically search for the thermostat device. If you find the corresponding thermostat device and click Add, the WIFI icon will appear on the thermostat display. Find the thermostat product (Bluetooth + WIFI model) in the device list (small household appliances) under the specified distribution mode, click the Confirm button on the page, select the WIFI that can connect to the Internet in the working area of the device and enter the WIFI password.



4. Thermostat APP interface display

If the network fails to be configured, you can choose to add it again or manually set the WIFI offline function and connect it again. Note: If the connection fails, check whether the temperature controller enters the code matching state.



4. Thermostat APP interface display

If the network fails to be configured, you can choose to add it again or manually set the WIFI offline function and connect it again. Note: If the connection fails, check whether the temperature controller enters the code matching state.

