

WAVLINK®

Quick Installation Guide

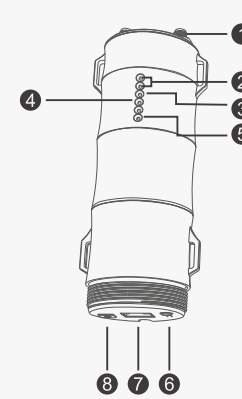


High Power Wi-Fi Outdoor AP/Repeater
 Model: WL-WN570HA1 AC800
 Model: WL-WN570HN2 N300

REV E3

Hardware Overview

Primary Extender



- 1 RP-SMA Antenna Connectors
- 2 3 x Wi-Fi Signal LEDs
- 3 Wi-Fi LED
- 4 WAN/LAN LED
- 5 POWER LED
- 6 Reset button
- 7 WAN/LAN Port (POE)
- 8 Grounding Terminal

WL-WN570HA1
 2.4G SSID: WAVLINK-N
 5G/AC SSID: WAVLINK-AC
 Wireless Key: no

WL-WN570HN2
 2.4G SSID: WAVLINK-N
 Wireless Key: no

Default Parameters
 Web: <http://wifi.wavlink.com>
 Default IP: 192.168.10.1
 Login Password: admin

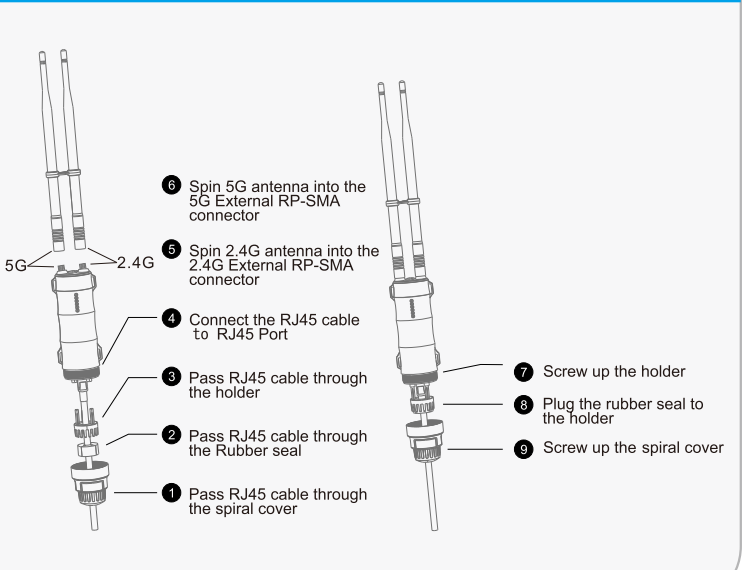
LED indicators

POWER	ON: The Device is powered on OFF: The Device is not receiving electrical power.
LAN/WAN	ON: The Ethernet port is connected. OFF: The Ethernet port is disconnected. Flashing: Transferring data to/from a network device

Wi-Fi Signal

Mode	==	==	==	Description
AP/Router	ON	ON	ON	Wi-Fi Signal output power 100%
	ON	ON	ON	Better reception: signal strength 75% to 100%
Repeater WISP	ON	ON	OFF	Good reception: signal strength 50% to 75%
	ON	OFF	OFF	Weak reception: signal strength below 50%
	Flashing	OFF	OFF	Disconnected

Assembly

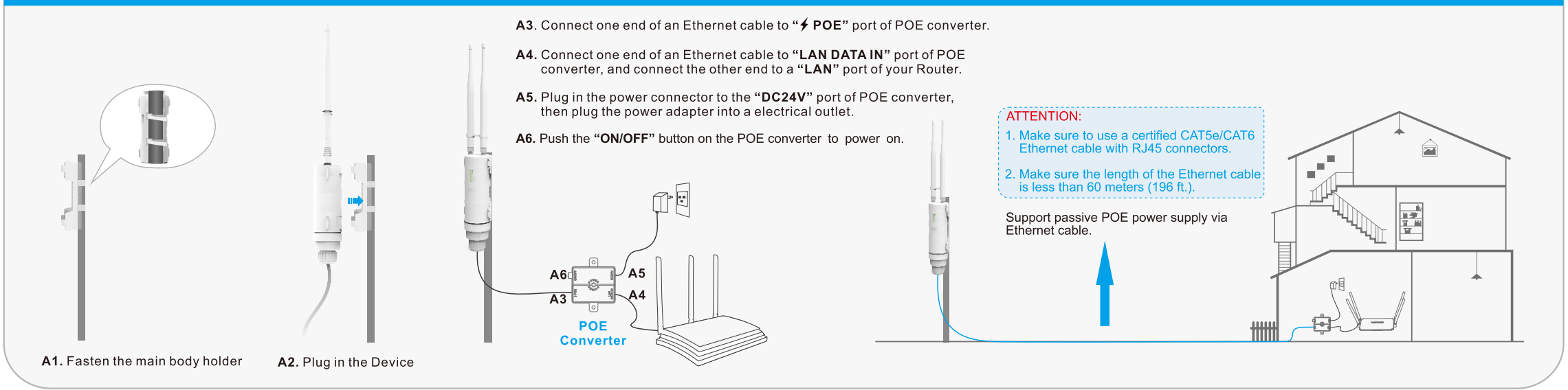


OPTION ONE LAN to Wi-Fi Extension Quick Setup

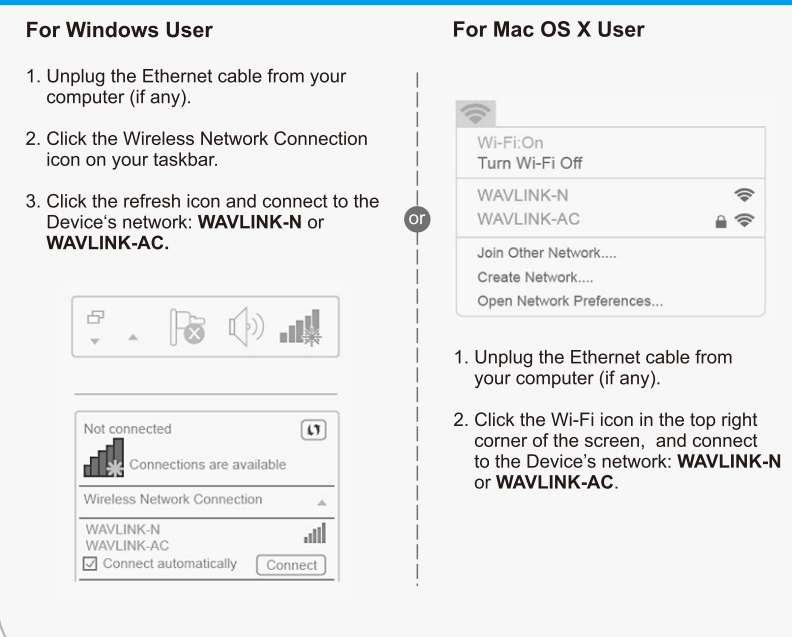
Recommend for big yard



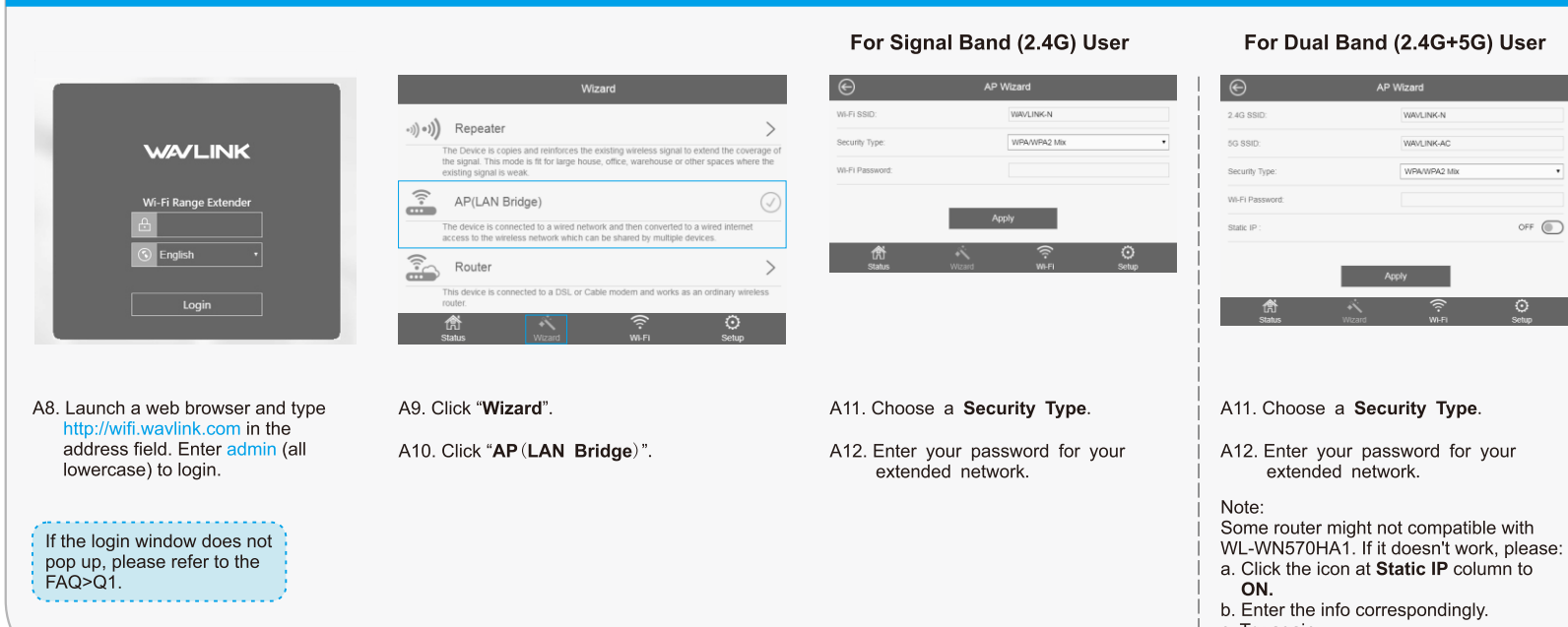
Installation



A7. Connect to the Device



Configuration



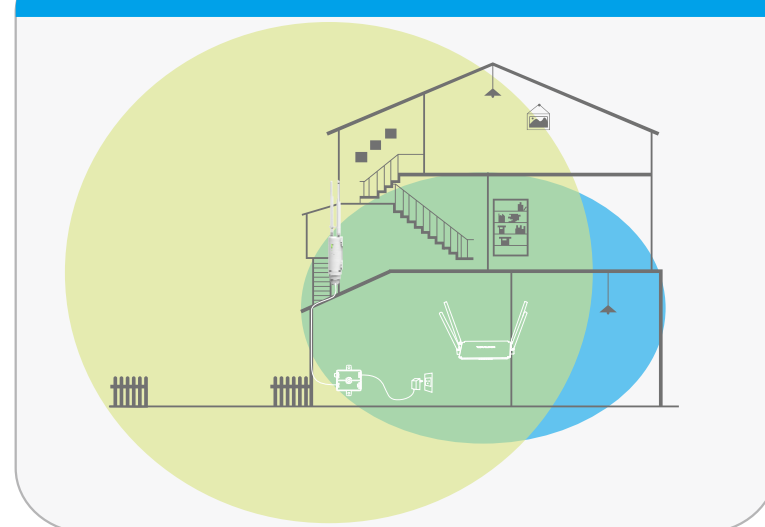
Change Login Password



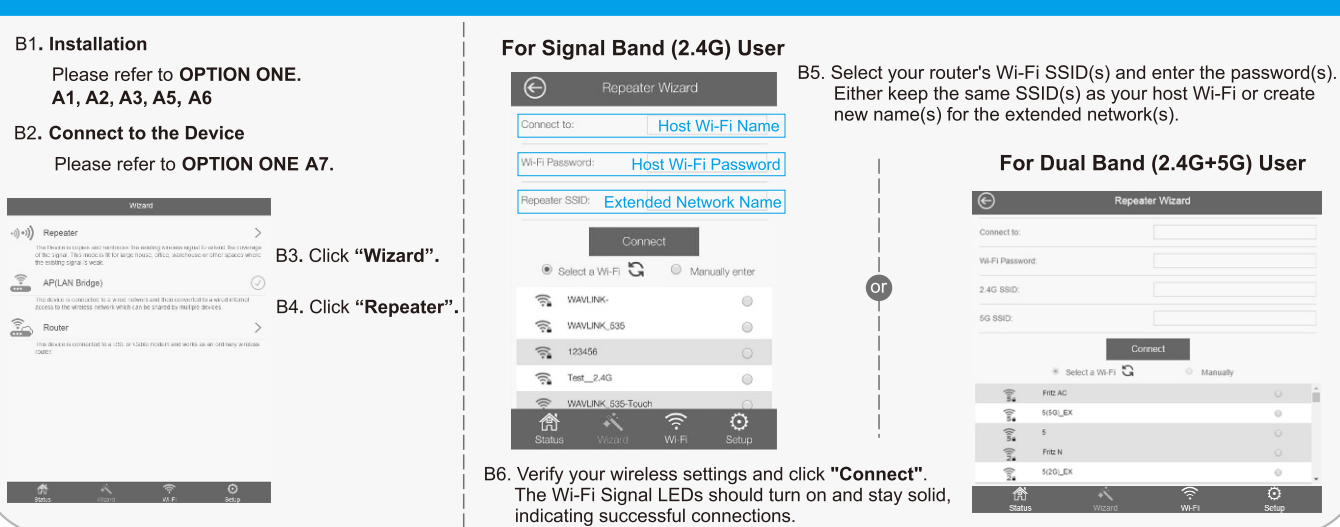
105铜板彩色, 折叠
 成品尺寸: 105x99mm, 展开尺寸: 420x297mm

OPTION TWO Wi-Fi to Wi-Fi Extension Quick Setup

Recommend for midsize yard

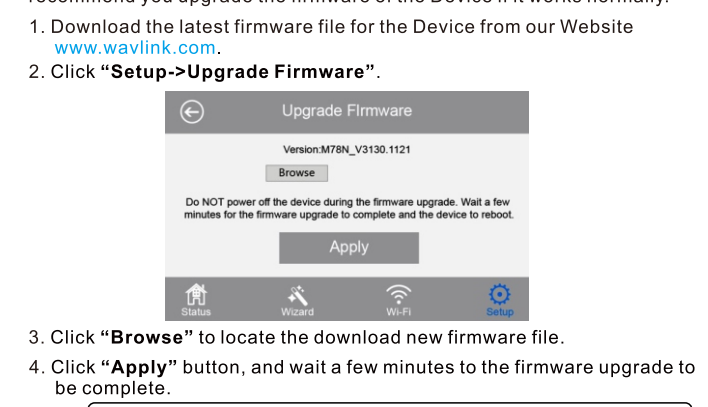


Configuration



Firmware Upgrade

Firmware upgrade can fix bugs of the Device. However, we DO NOT recommend you upgrade the firmware of the Device if it works normally.



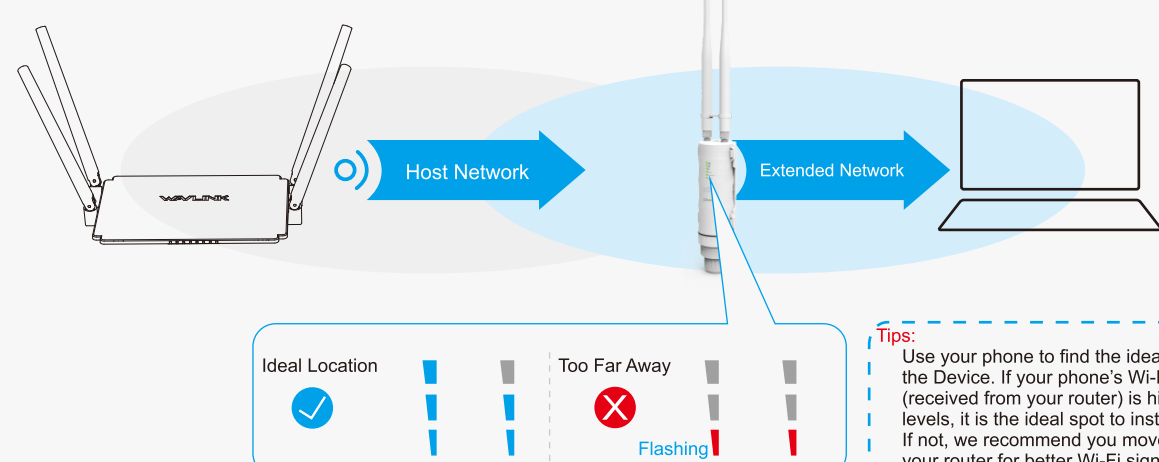
NOTE: Never interrupt the upgrade procedure by closing the web browser or physically disconnect your computer from the Device. If the procedure is interrupted, the firmware upgrade will fail, and you may have to return the Device to the dealer to ask for help.

FAQ (Frequently Asked Questions)

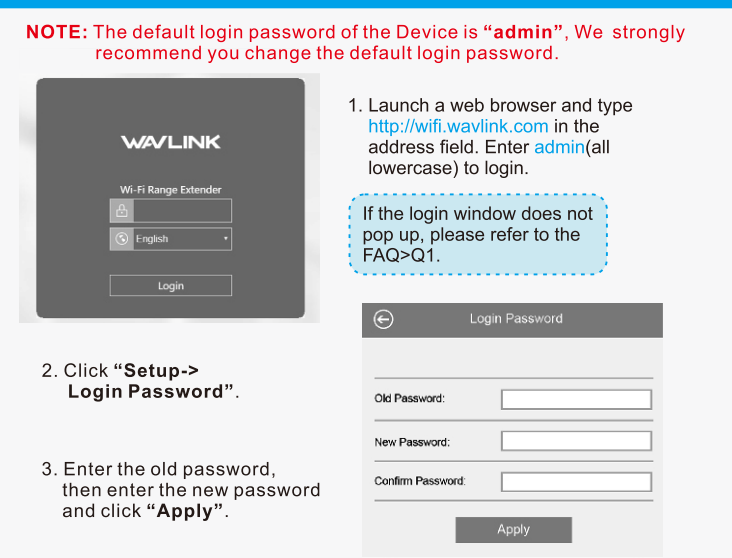
- Q1. Why doesn't the login page appear after entering <http://wifi.wavlink.com> ?**
- If your computer is wirelessly connected, please verify that you have connected to the device's SSID. If your computer is connected via an Ethernet cable, please verify that the connection is stable.
 - Make sure your computer is set to obtain an IP address automatically.
 - Use the IP address to log in to the page. The default IP is 192.168.10.1. If the Device is connected to the host Wi-Fi, please go to the router's DHCP client list to obtain the Device's current IP address.
 - Please reset the device and try again. If the problem still exists
- Q2. How do I restore the device to its factory default settings?**
- While the Device is powered on, press and hold the Reset button until all the LEDs turn on momentarily.
- Q3. What should I do if the LED does not change to solid after completing ?**
- You may have entered the incorrect Wi-Fi password of your host Wi-Fi during the configuration, please log into the Device's web-based interface to check the password and try again.
 - Reset the device and go through the configuration again.
- Q4. I have enabled a wireless MAC filter, wireless access control, or access control list (ACL) on my Router. What should I do before configuring and using the Device ?**
- If you have enabled those functions of your Router, you may need to disable them first. And then follow Method ONE or Method TWO to complete the configuration.
- For more details, please refer to www.wavlink.com.

B7. Relocate

- Plug the Device into an electrical outlet between your router (Host Wi-Fi) and the Wi-Fi dead zone.
- Wait until the Wi-Fi Signal LEDs is ON. If the signal is weak, relocate the Device closer to your router for better Wi-Fi signal.



Change Login Password

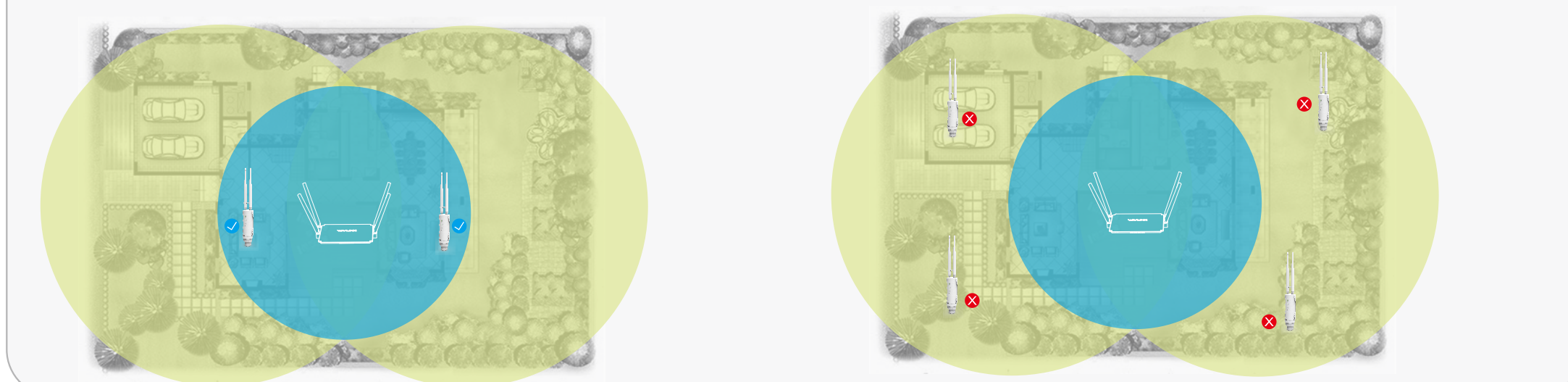


The Best Location

Wi-Fi to Wi-Fi Extension

Please install the device as follows:

- Picture with : Recommended
- Wi-Fi Signal 2 x LEDs or 3 x LEDs are ON
- Picture with : Not Recommended
- Wi-Fi Signal 1 x LED is ON or Flashing, which could cause network disconnection or slow internet.



GNU General Public License Notice

This product includes software codes developed by third parties. These software codes are subject to either the GNU General Public License (GPL), Version 2, June 1991 or the GNU Lesser General Public License (LGPL), Version 2.1, February 1999. You can copy, distribute, and/or modify in accordance with the terms and conditions of GPL or LGPL.

The source code should be complete, if you want us to provide any additional source code files under GNU General Public License (GPL), please contact us in these matters. We are committed to meeting the requirements of the GNU General Public License (GPL). You are welcome to contact our local office to get the corresponding software and licenses. Please inform us your contact details (full address) and the product code. We will send you a software package with the software and license for free.

The respective programs are distributed WITHOUT ANY WARRANTY, without even the implied warranty of MERCHANTABILITY or FITNESS FOR A PARTICULAR PURPOSE.

Please refer to the GNU General Public License Web site for further information.
<http://www.gnu.org/licenses/old-licenses/gpl-2.0.html>
<http://www.gnu.org/licenses/lgpl.html>

WEEE Directive & Product Disposal

At the end of its serviceable life, this product should not be treated as household or general waste. It should be handed over to the applicable collection point for the recycling of electrical and electronic equipment, or returned to the supplier for disposal.