

【Precautions】

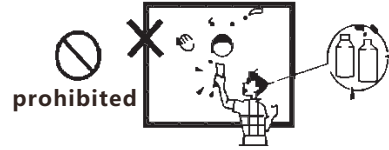
Do not touch the screen surface by hand.



Do not write on the screen surface



Do not clean the fabric with corrosive detergent.



Do not scratch the fabric by sharp object.



Anti light curtain Fixed Frame Screen User Manual

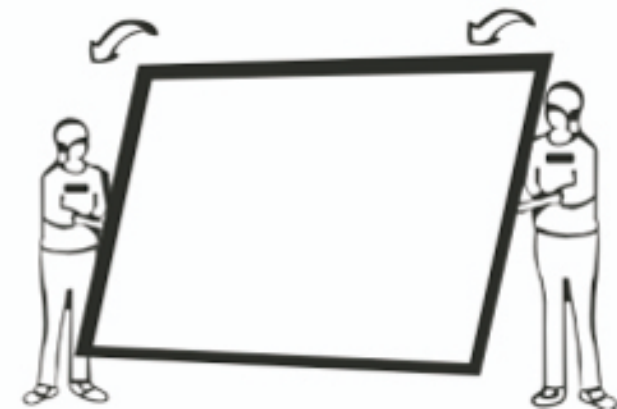


【Notice】

Thank you for choosing our products, please read this manual carefully before installation and keeps it for future reference.

【Important Note】

It is recommended that at least 2 persons assemble the product together. After assembling, two persons should lift up the screen simultaneously on both side of screen as shown below, and hang it on the wall mount bracket installed on wall.



Please handle and install this product very carefully, our company will not take any liability of injury or death, or responsibility for product damage due to poor handling, human mistakes, natural disaster etc.

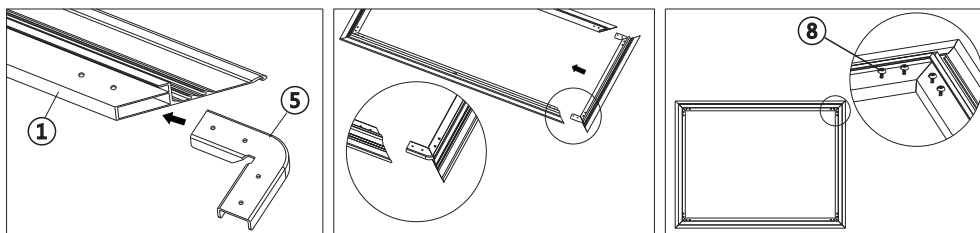
【Parts list】

<p>① Main Frame-Horizontal(Long)×2PCS Main Frame-Vertical(short)×2PCS</p>		<p>② Border Frame-Horizontal(Long) ×2PCS Border Frame-Vertical(short)×2PCS</p>	
<p>③ Screen fabric×1PCS</p>			
<p>⑤ corner Bracket for main frame ×4PCS</p>	<p>⑥ Corner Bracket for birder frame ×4PCS</p>	<p>⑦ Border frame hanger ×2PCS</p>	<p>⑧ Screw M5 × 8mm ×16PCS</p>
<p>⑨ Screw M4 × 6mm ×8PCS</p>	<p>⑩ Tension Spring According to size</p>	<p>⑪ Upper hanging bracket ×2PCS</p>	<p>⑫ Spring hook ×2PCS</p>
<p>⑬ Screw Anchor 6PCS</p>	<p>⑭ Tapping screws 4 × 40mm 6PCS</p>	<p>⑮ User Manual ×1PCS</p>	<p>⑯ Protection paper ×1PCS</p>

【Assembly】

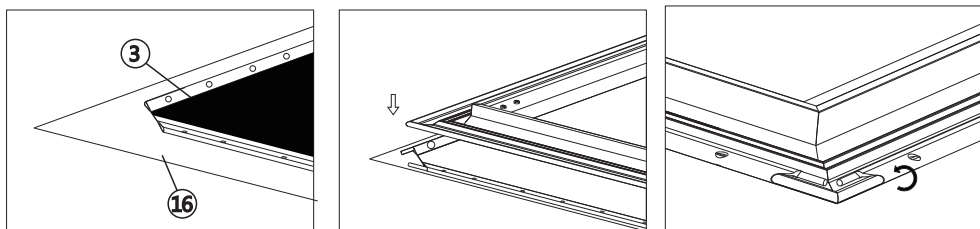
Step one: Main Frame Installation [Materials ① ⑤ ⑧]

1. Insert main frame corner bracket to main frame.
2. Insert 2 corner brackets into a short main frame, then insert the brackets into the end of long frames.
3. Secure the bracket by 4 screws in each corner.

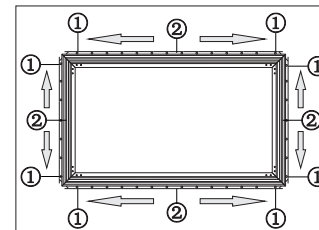


Step two: Fabric Installation [Materials ③ ⑩ ⑯ ⑫]

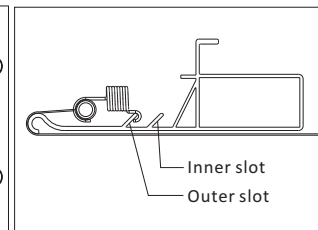
1. Unroll the protection paper on a flat surface and spread the screen fabric on it with the front side towards to paper.
2. Place the assembled frame onto the fabric.
3. Fold 4 edges of the fabric up onto the fringe of main frame.



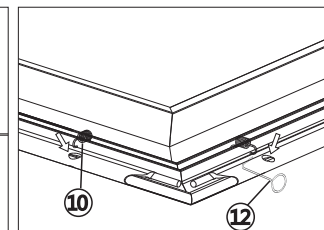
4. First, put on the spring on all 4 corners as marked ① below, then from the middle of frame towards to edge.



5. Recommend to hang the spring onto the outer slot. Move the spring to inner slot to enhance overall flatness when necessary.



6. Pull out the spring by spring hook, make sure the end of spring fully go through the hole on fabric.

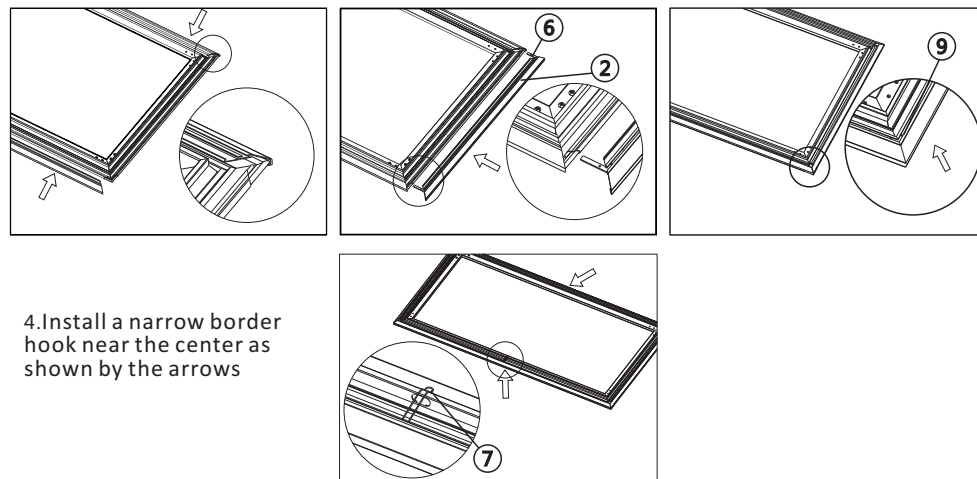


【Notice】

When wrinkle is observed on the screen fabric after installing all springs, DO NOT remove the springs, slightly pull the end of spring along the frame slot until wrinkle disappears.

Step three: Border Frame Installation [Materials ② ⑥ ⑦ ⑨]

1. Put both long border frames along the long, DO NOT insert any corner bracket on long border frame at this moment.
2. Insert corner bracket into both end of short border frame, then assemble the border frame.
3. Fasten onto border frame by screw.



4. Install a narrow border hook near the center as shown by the arrows

【Mounting the screen on wall】

Step one : Mount the upper hanging bracket [Materials ⑪ ⑬ ⑭]

Drill 4 holes on concrete wall by 8mm hammer drill bit according to the dimension indicated below, then insert the screw anchor into the hole by hammer.

